

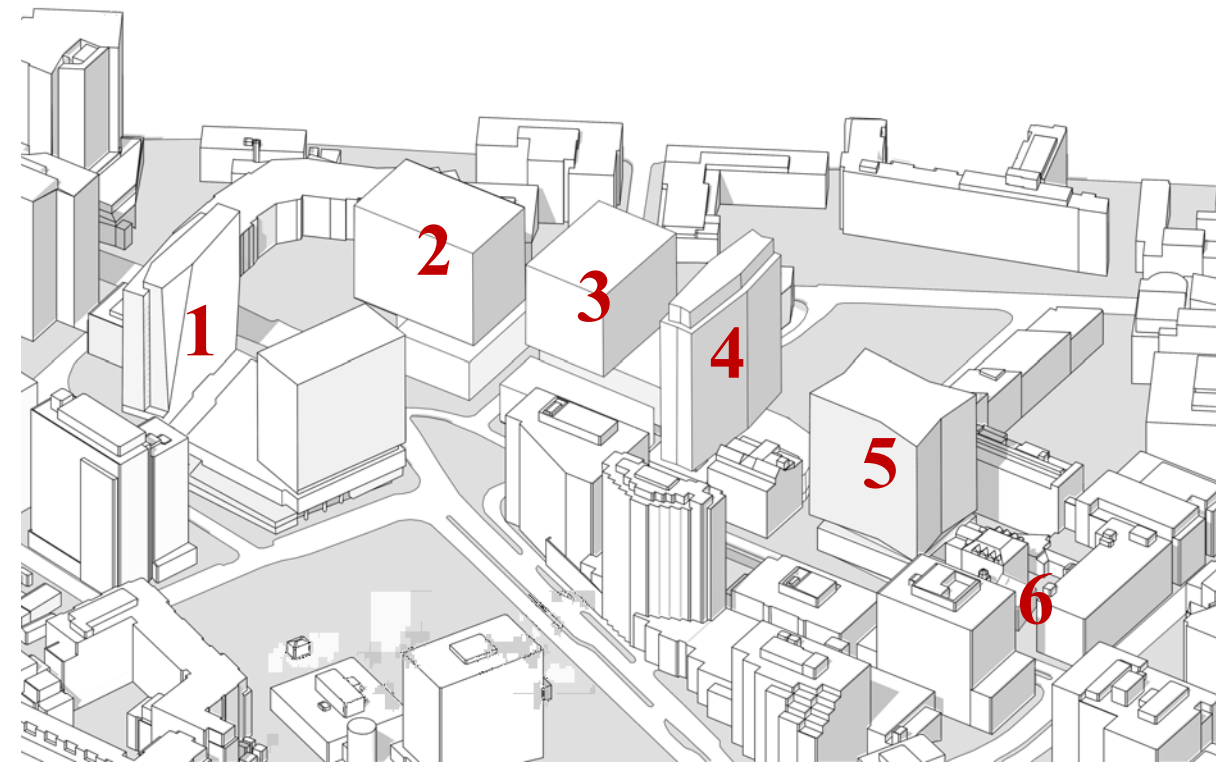


# KENDALL SQUARE INITIATIVE

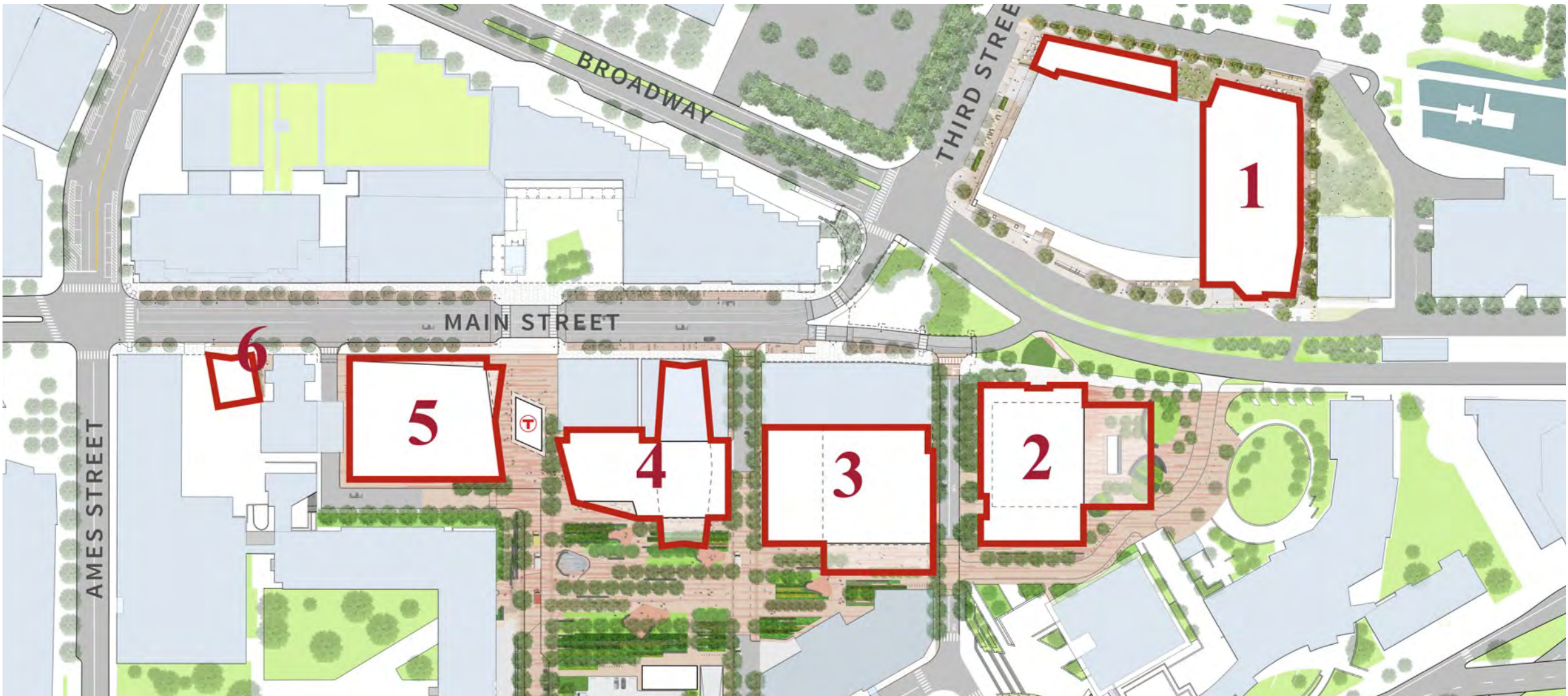


Cambridge Redevelopment Authority  
Cambridge Trust Company – 415 Main  
July 20, 2016

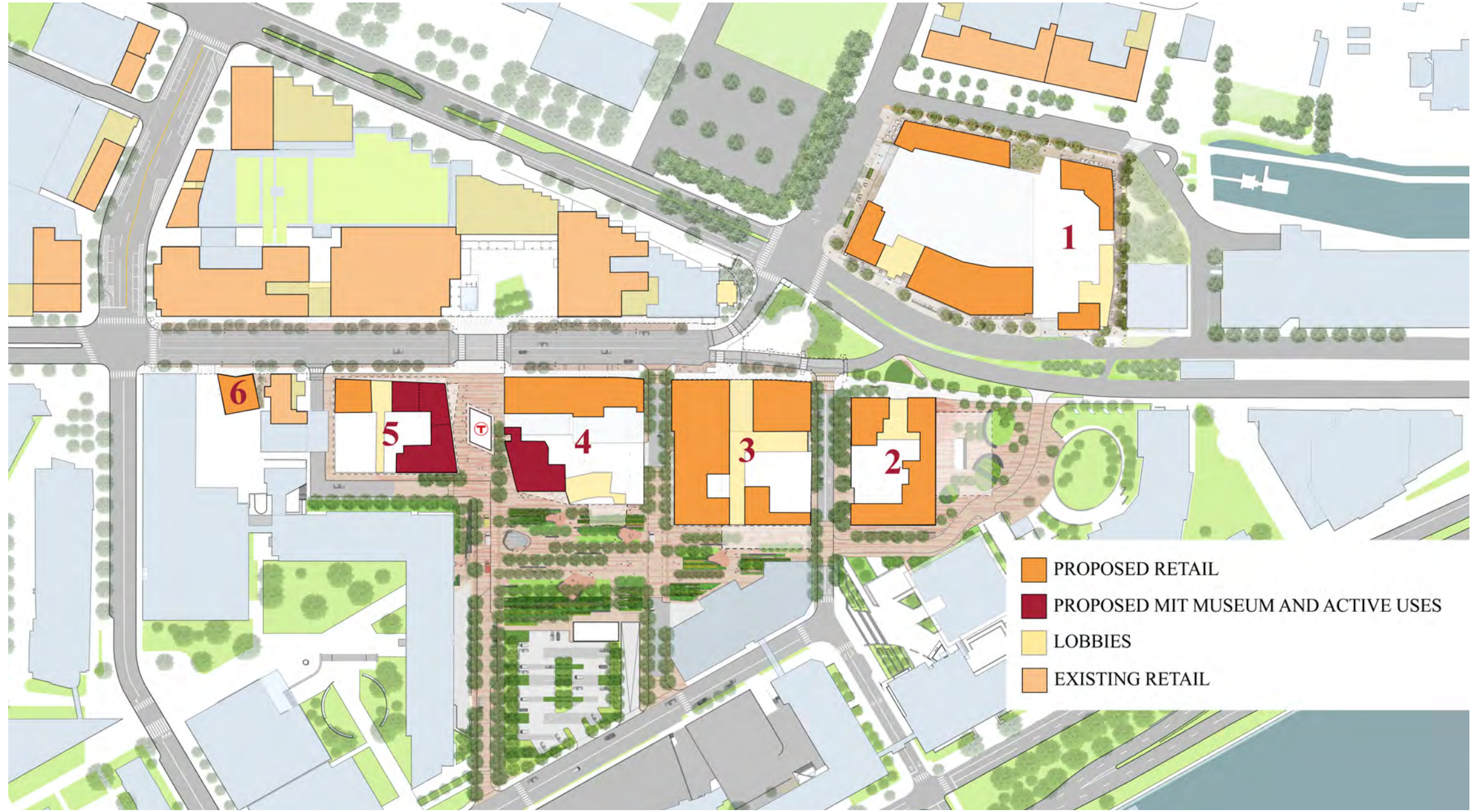
# TRANSFORMING SIX PARKING LOTS



# SITE PLAN



# RETAIL PLAN



# GATEWAY ACTIVE RETAIL



# PROPOSED LOCATION

415 Main Street



# Cambridge Trust Company

# CAMBRIDGE TRUST COMPANY



**Cambridge Trust Company**

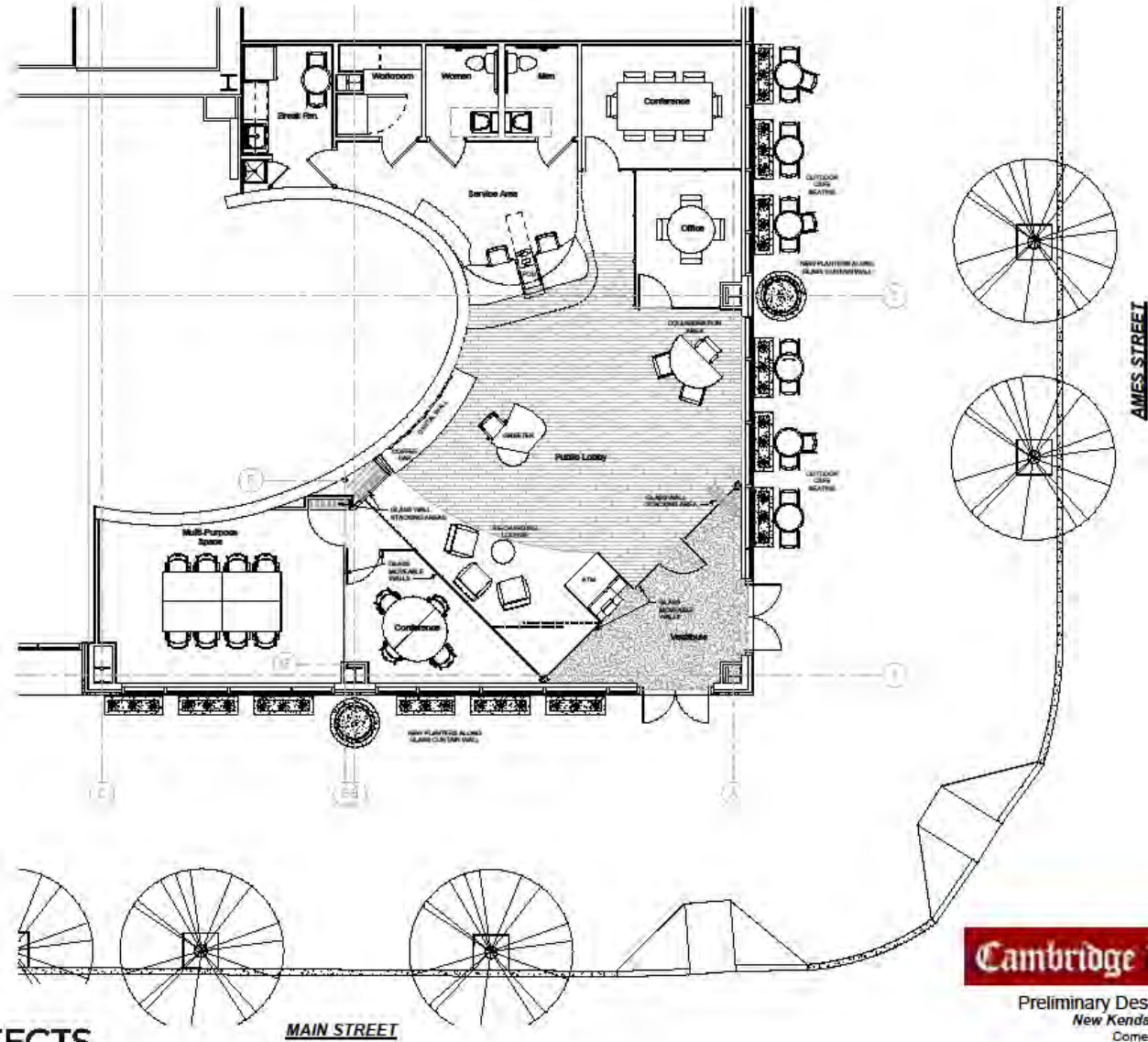
Preliminary Design - Proposed Renderings  
New Kendall Sq. Branch Location  
Corner of Main and Ames  
07-14-16



 **DRL ARCHITECTS**



# GENERAL LAYOUT

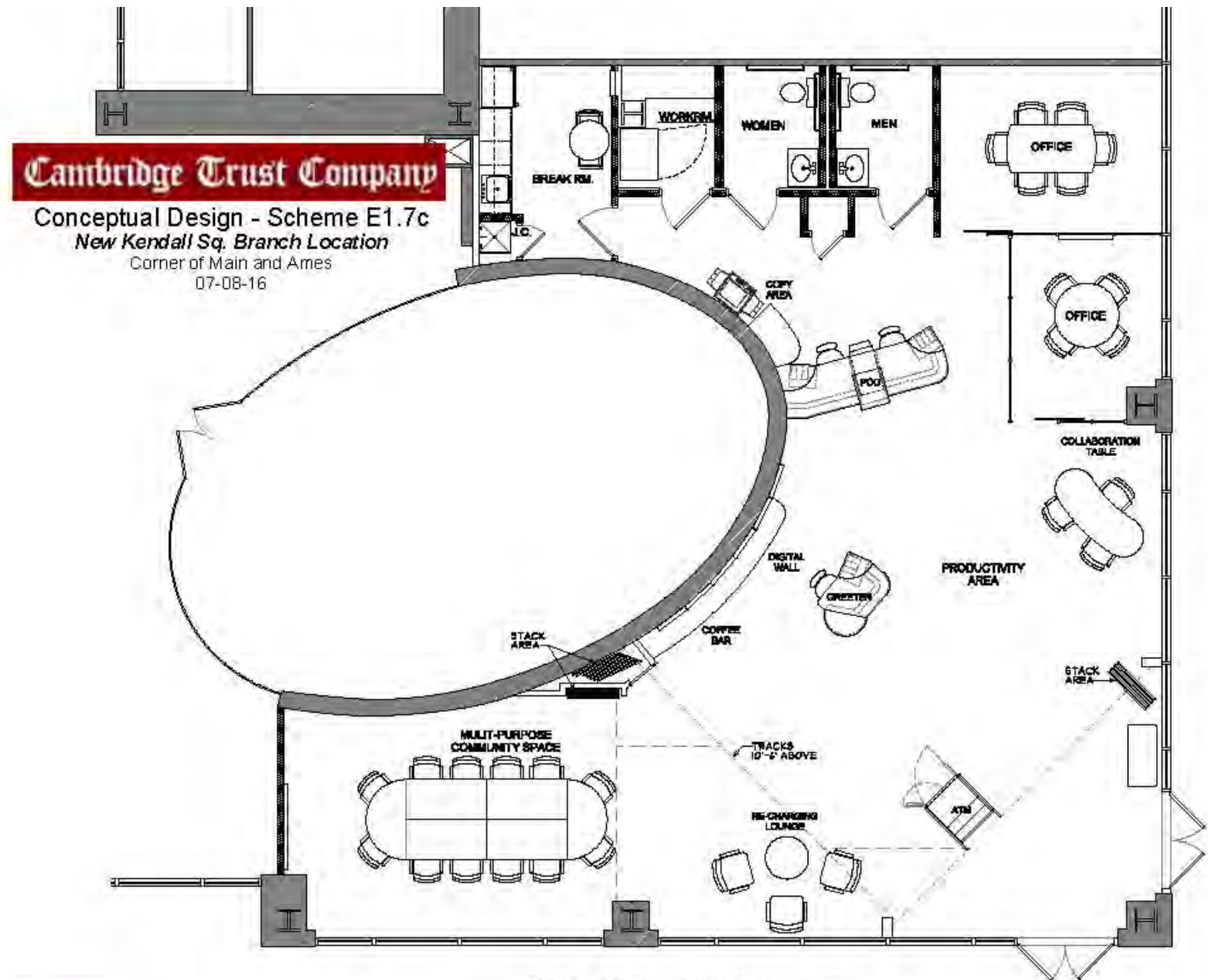


**Cambridge Trust Company**

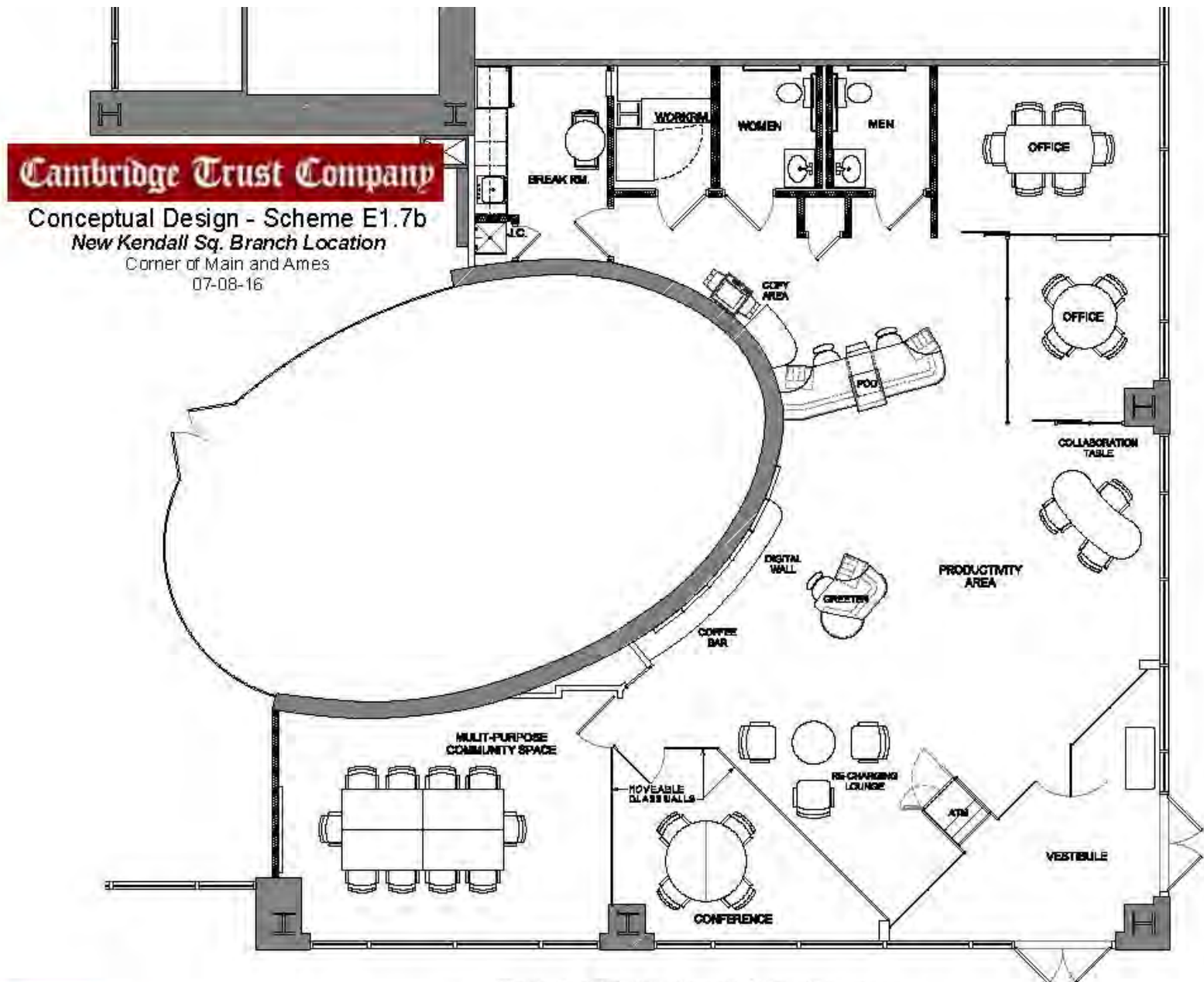
Preliminary Design - Proposed Floor Plan  
New Kendall Sq. Branch Location  
Corner of Main and Ames  
07-14-18



# FLOOR PLAN



# FLOOR PLAN



# EXTERIOR AWNING AMES ST

415 Main Street



# EXTERIOR AWNING MAIN ST

415 Main Street



# CAMBRIDGE TRUST OFFICE

415 Main Street



# CAMBRIDGE TRUST – POD

415 Main Street



# CAMBRIDGE TRUST – VESTIBULE

415 Main Street

