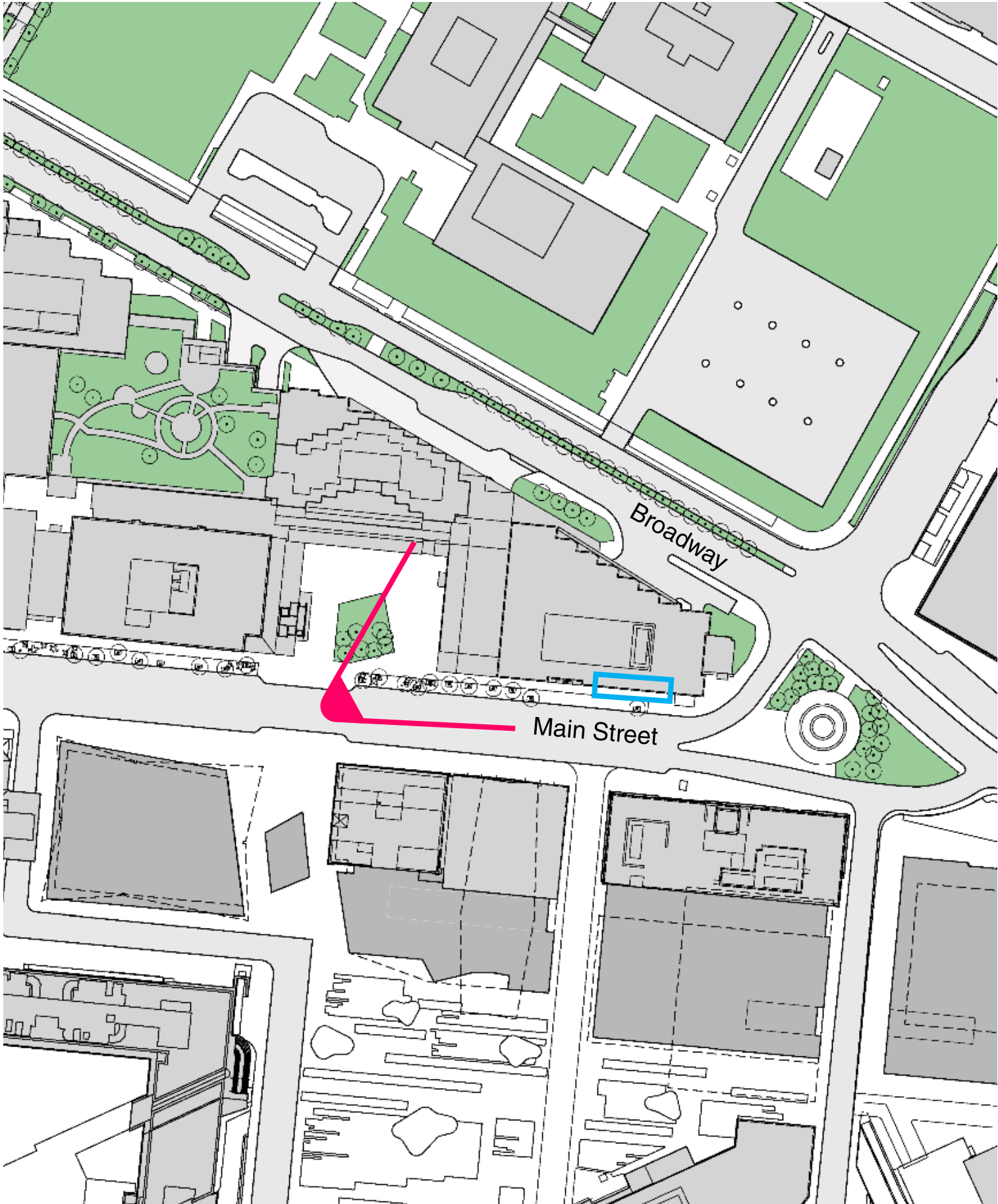


SASAKI

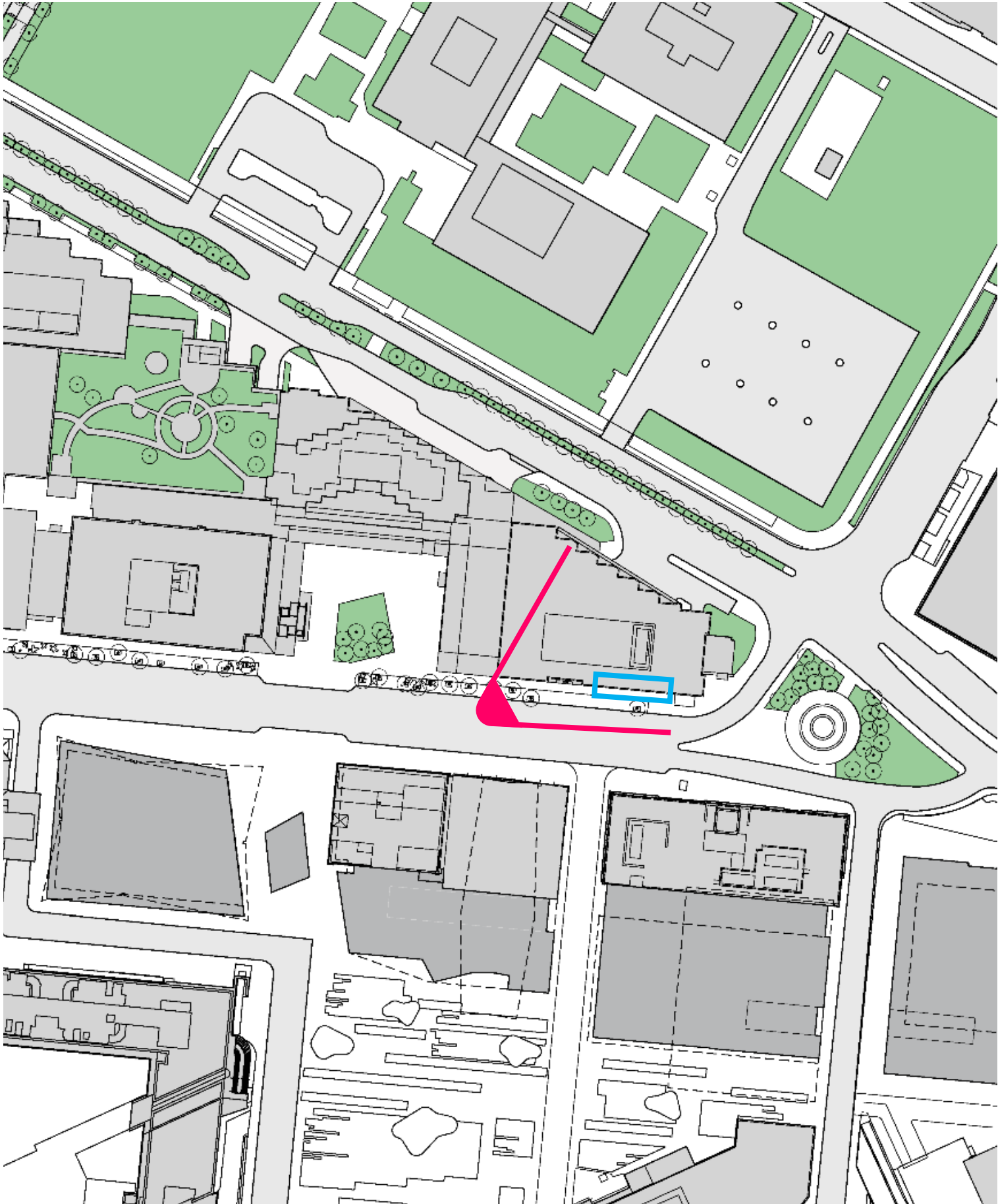
**THE KENDALL CENTER ADAPTER**

MAR 20<sup>th</sup> 2019

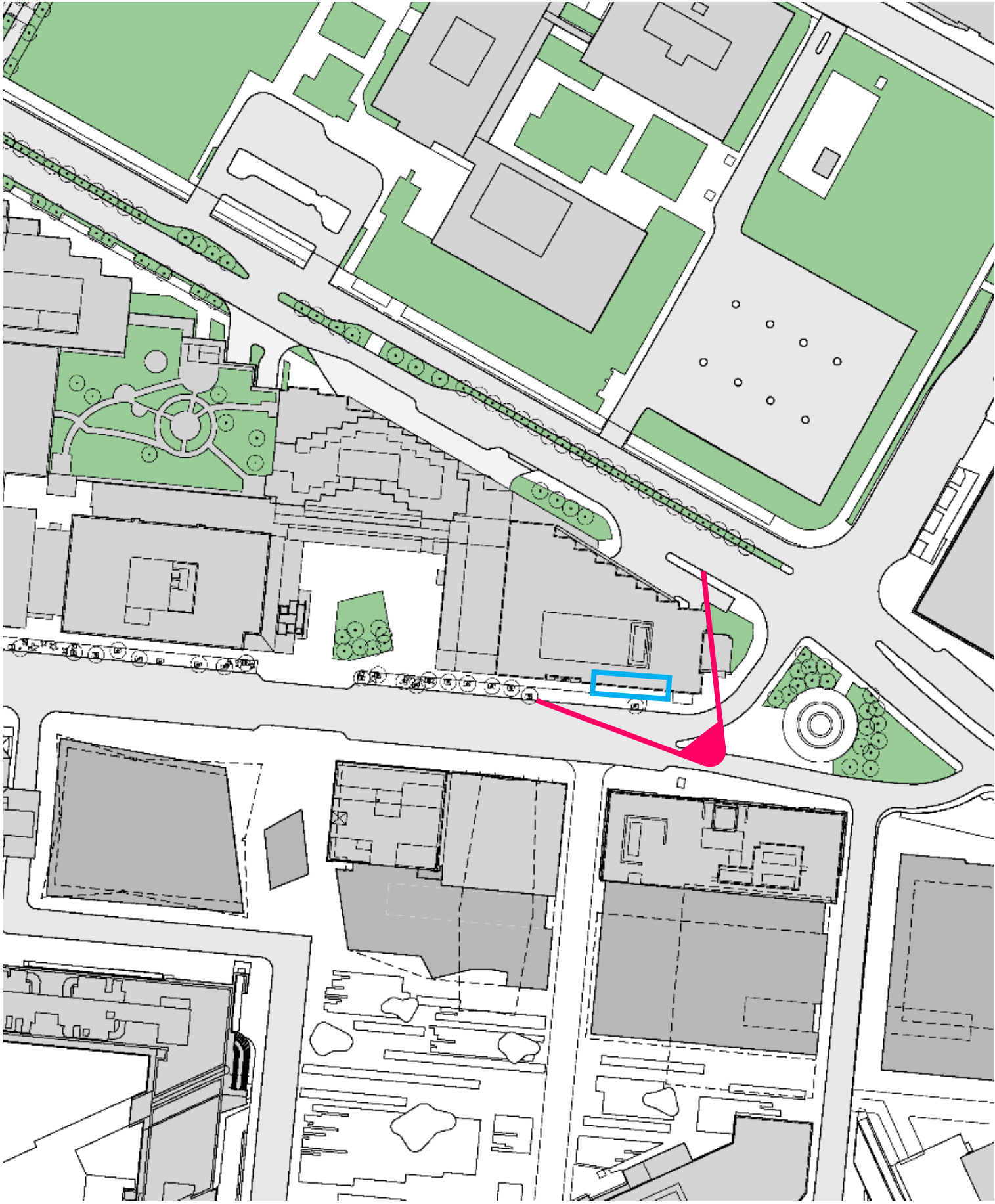
# SITE PLAN: Existing Conditions



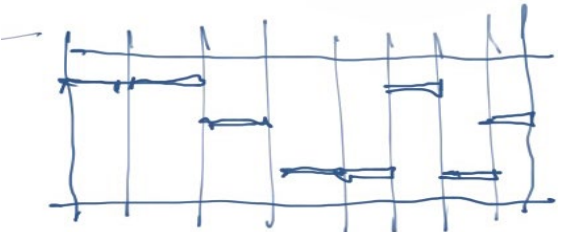
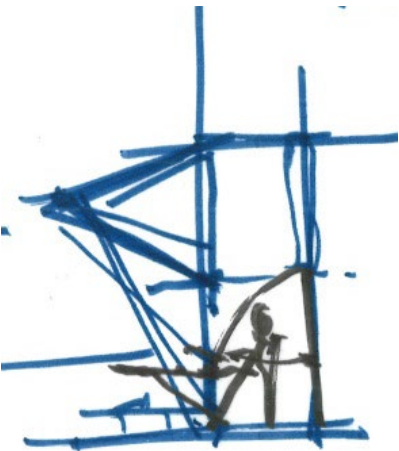
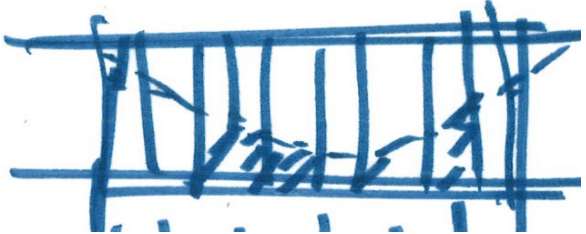
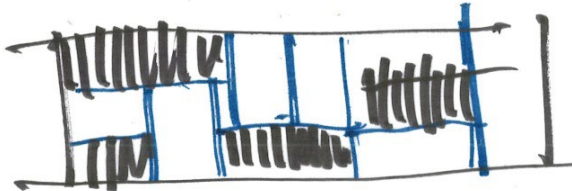
# SITE PLAN: Existing Conditions



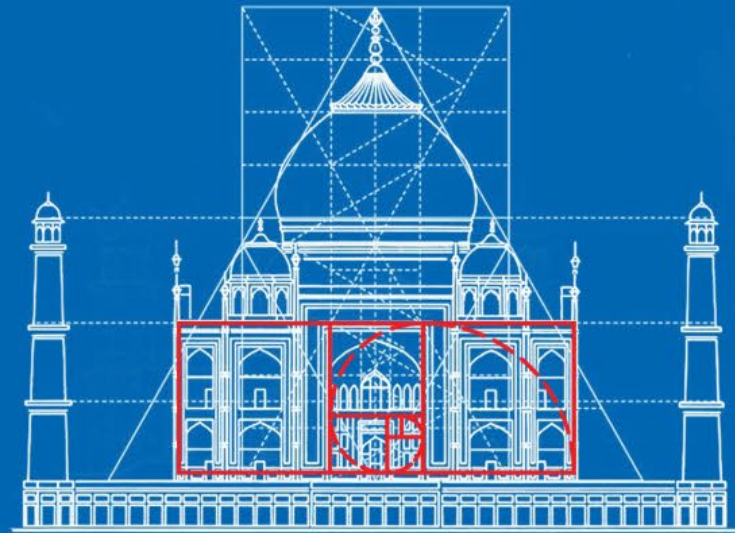
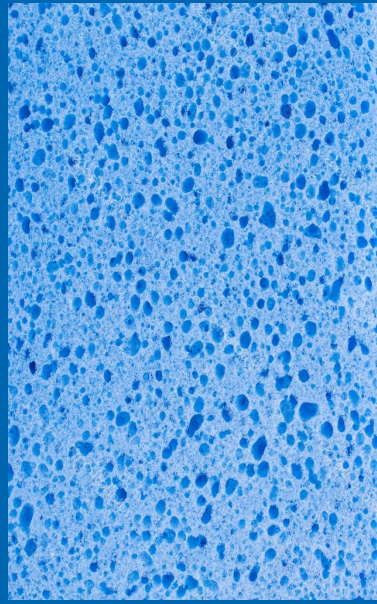
# SITE PLAN: Existing Conditions



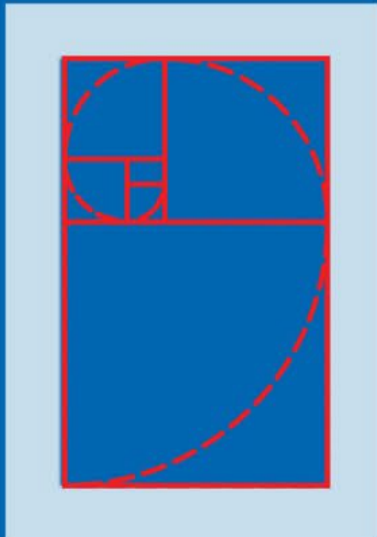
# 255 MAIN STREET EXISTING CONDITIONS



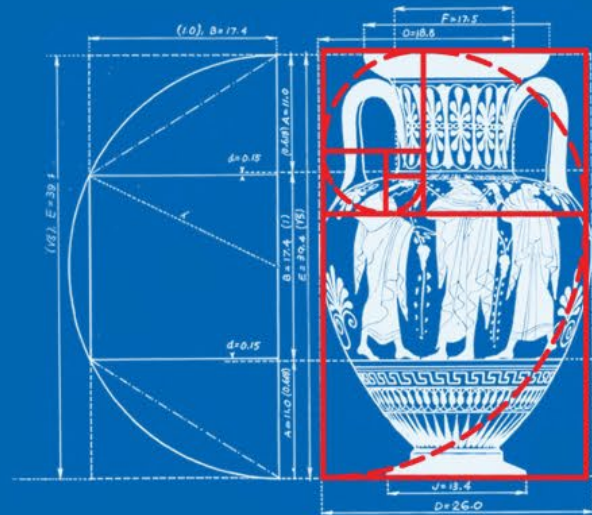
# THE ADAPTER INSPIRATION



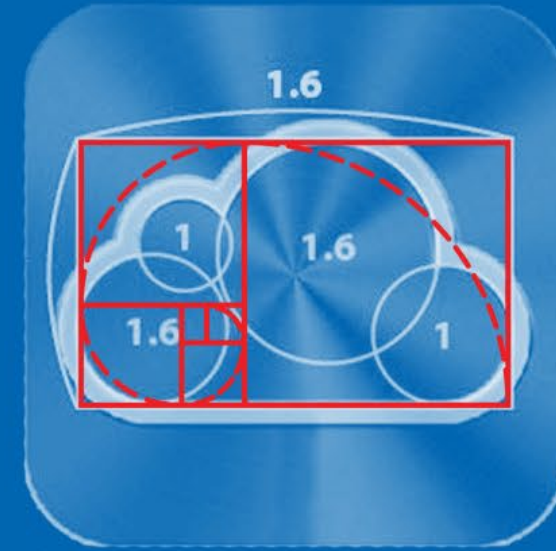
3.



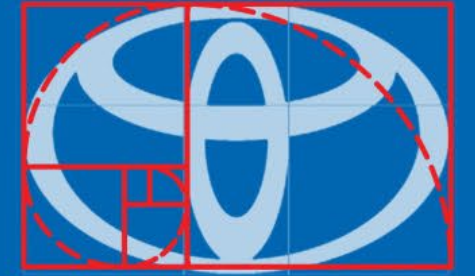
1.



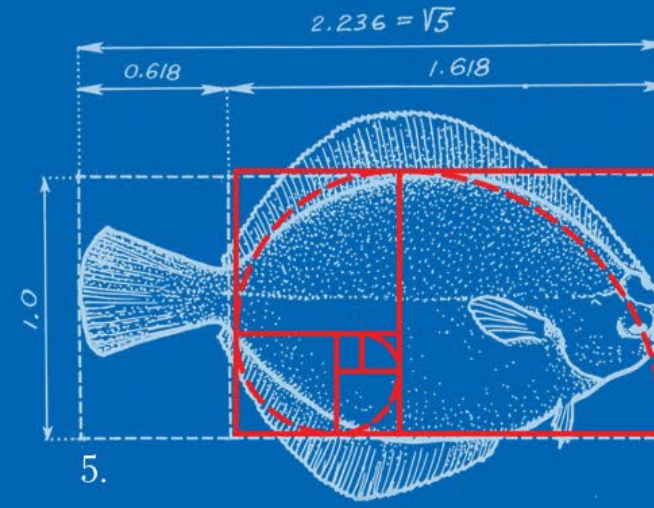
2.



4.



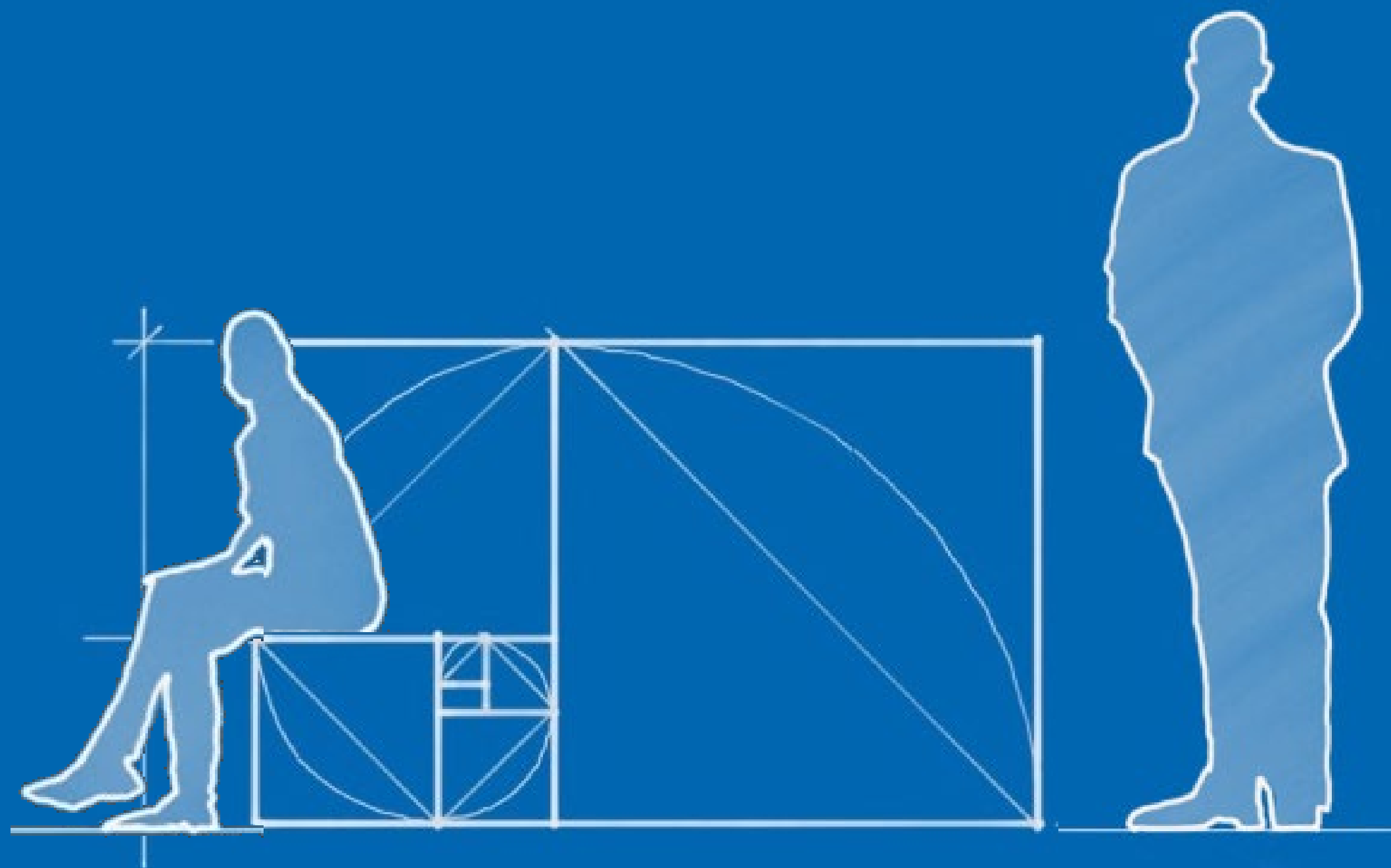
6.



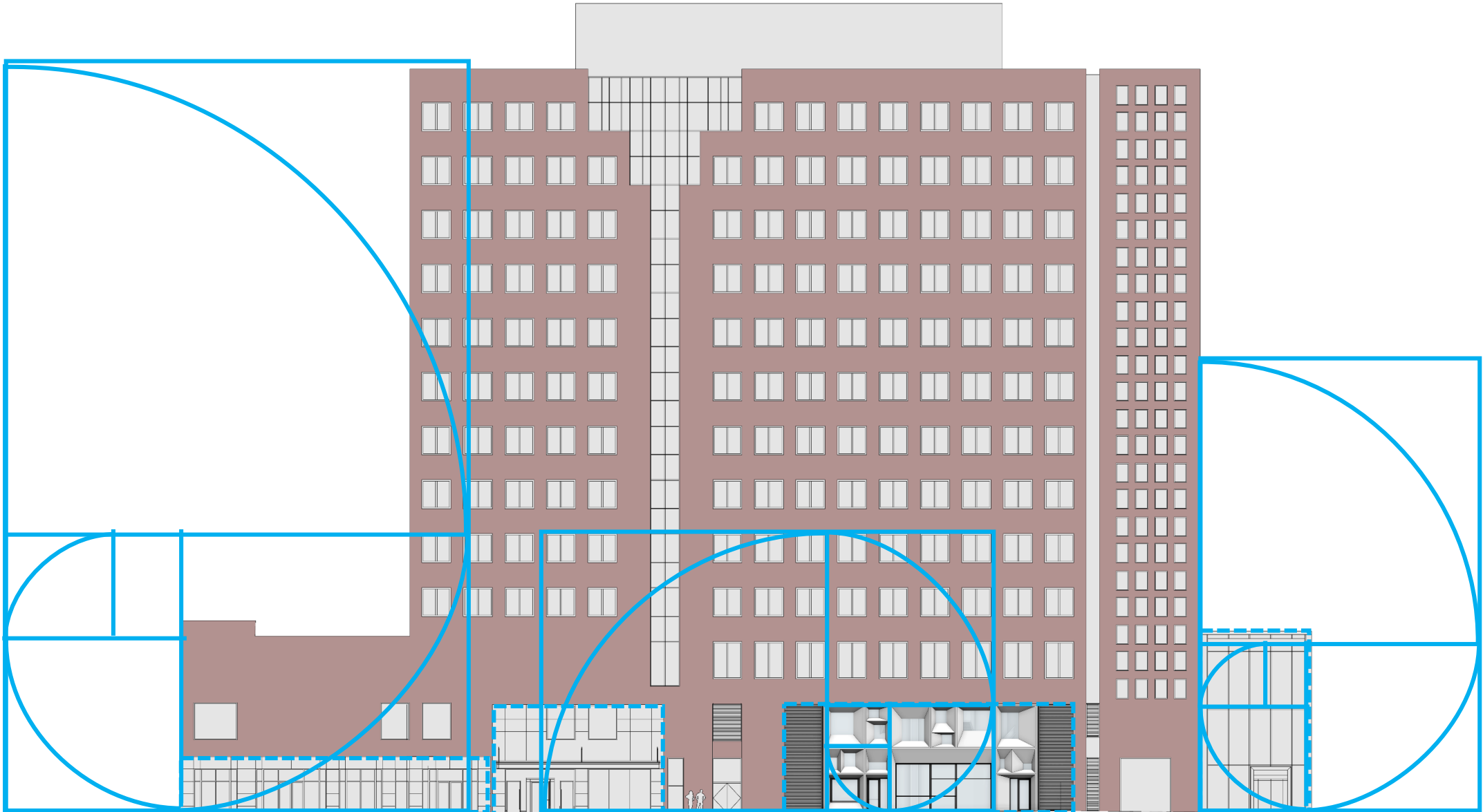
5.

1. The National Geographic
2. Attic Amphora (6Th C B.c.)
3. The Taj Mahal
4. iCloud
5. Curlfin Sole
6. Toyota

## THE RELATIONSHIP



# 255 MAIN STREET BUILDING ELEVATION: PROPORTION RELATIONSHIP





# 255 MAIN STREET FACADE ELEVATION: PROPORTION



# 255 MAIN STREET FACADE ELEVATION



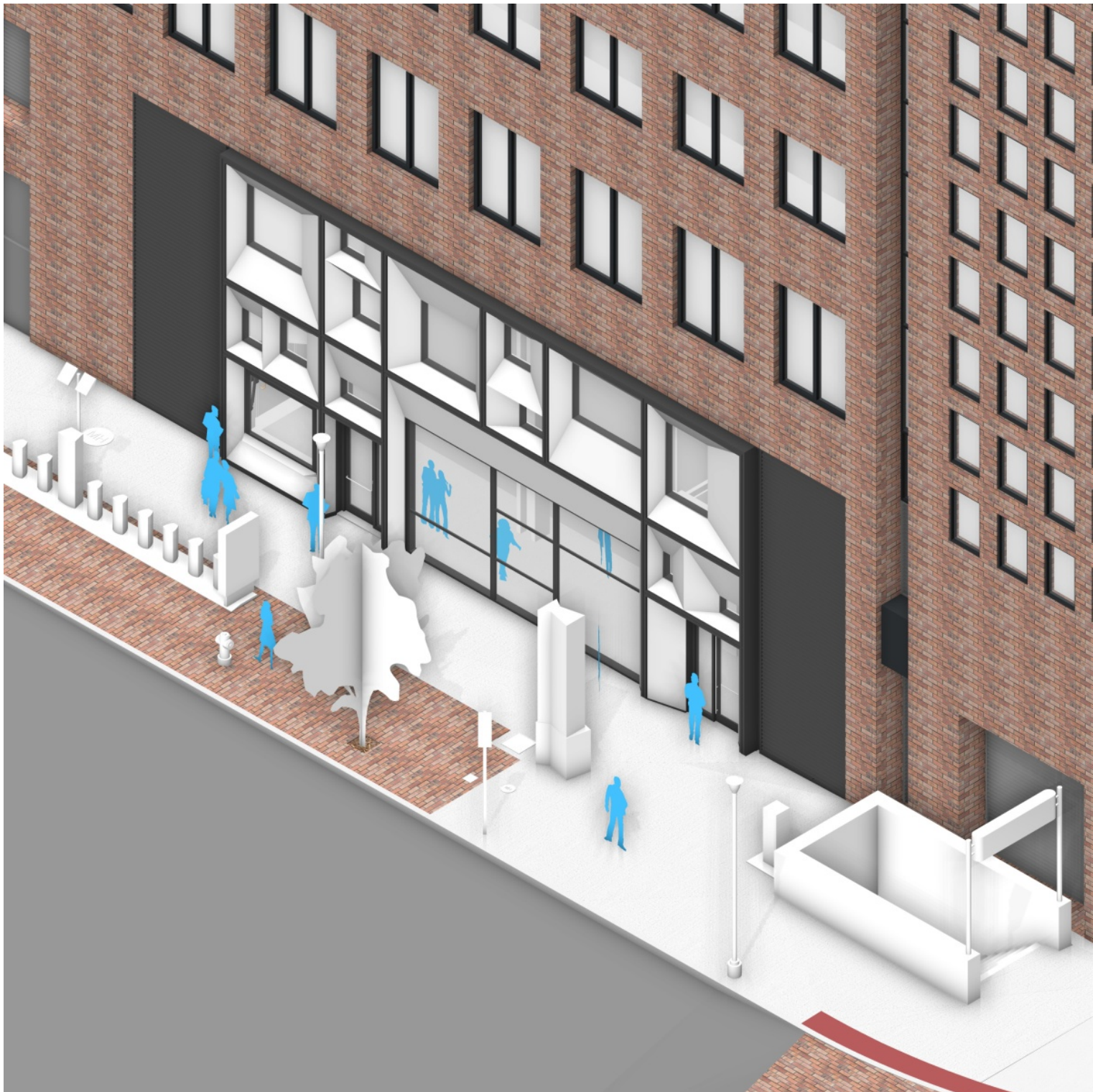
JAN 24 2019



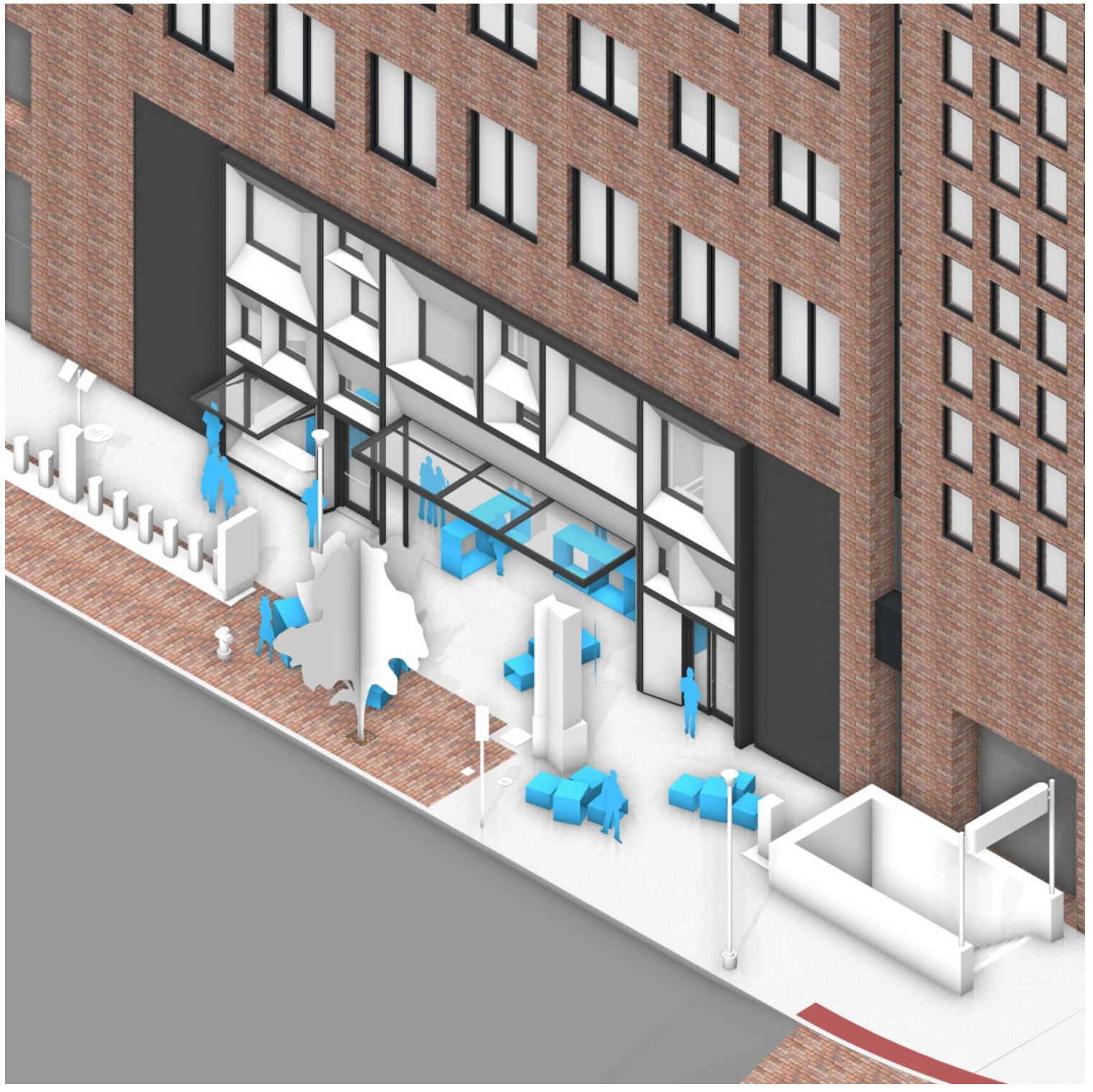
Boston Properties

SASAKI

# OPERATIONAL SCENARIOS

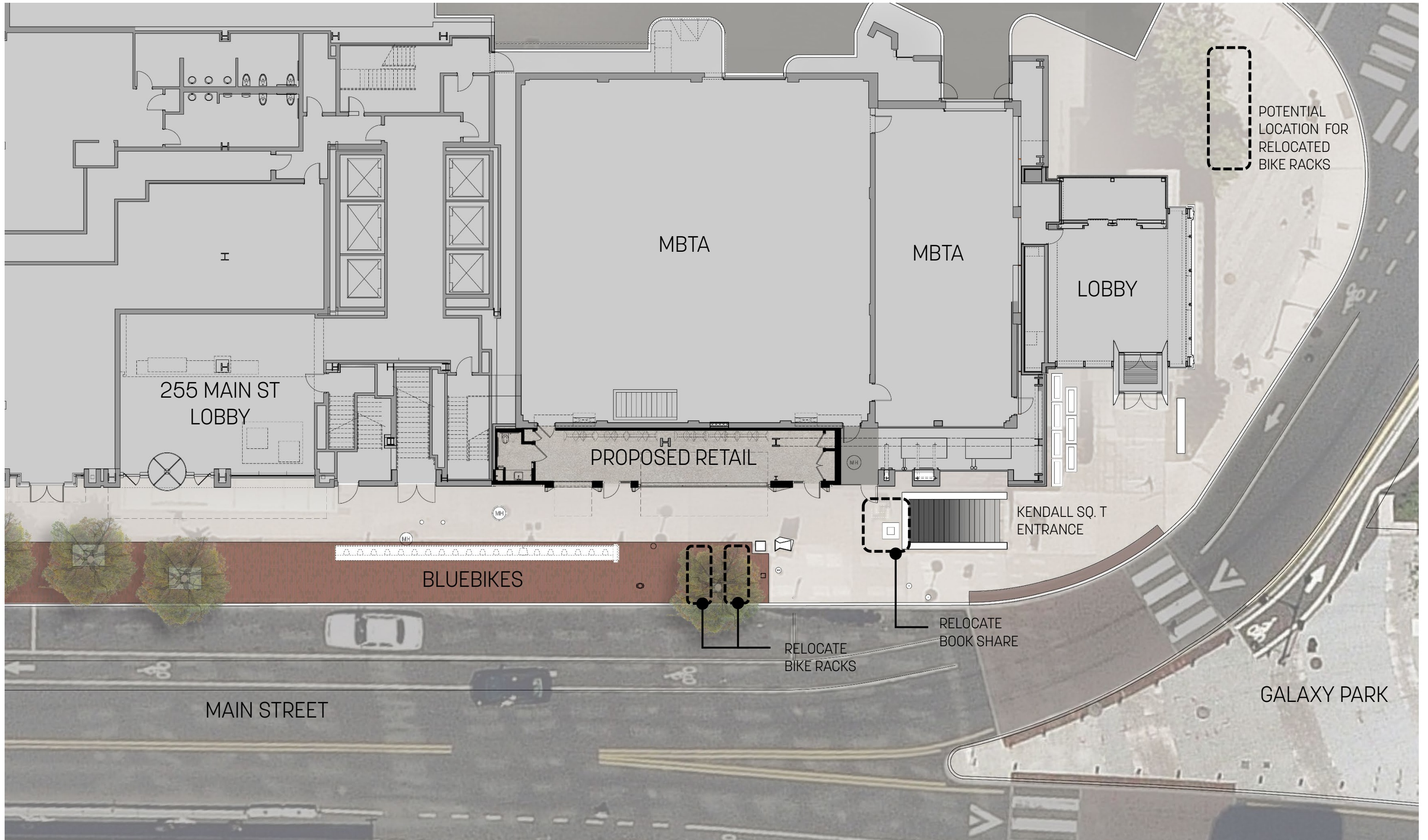


OPERABLE DOORS: IN CLOSED CONDITION

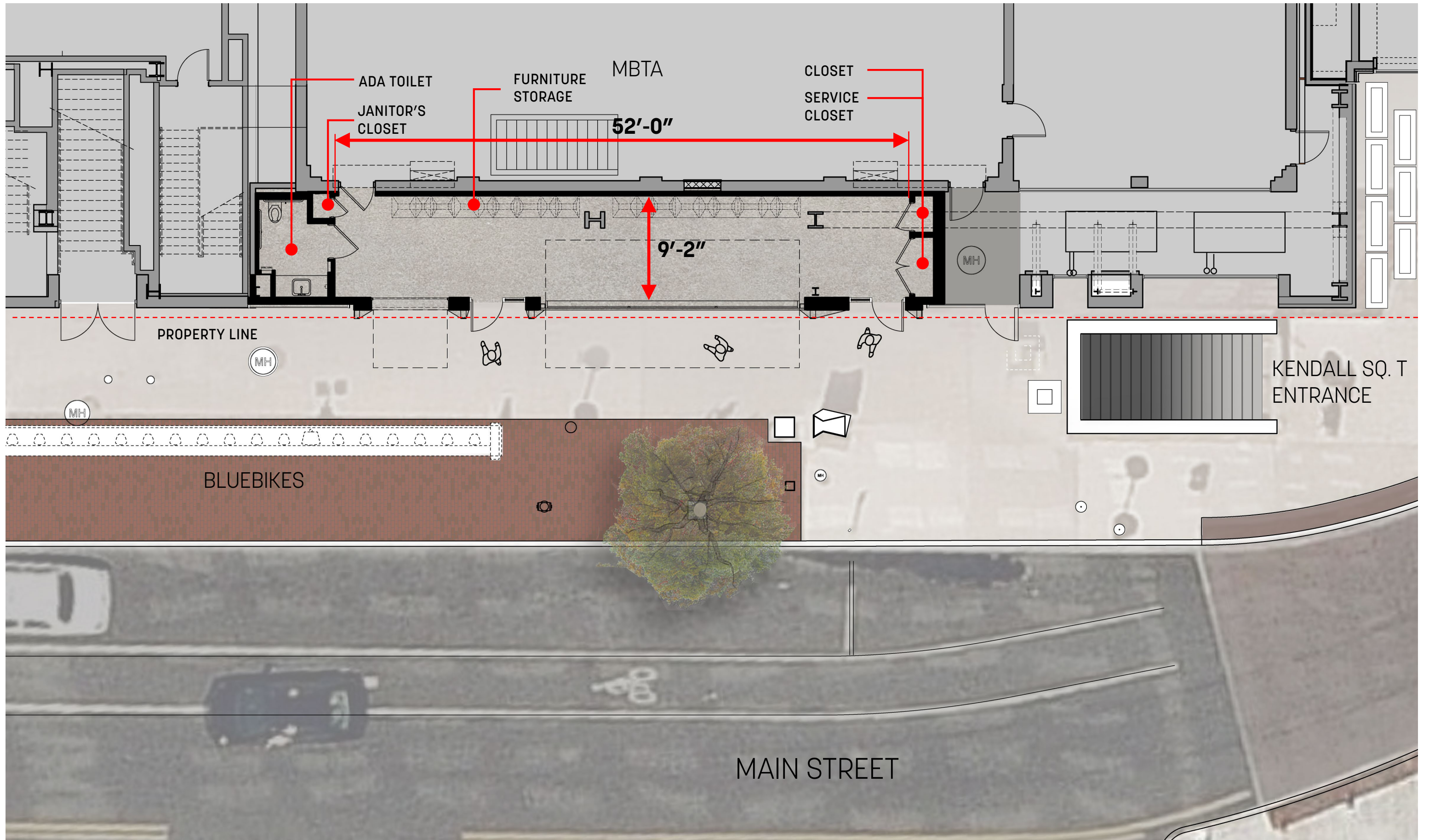


OPERABLE DOORS: IN OPEN CONDITION

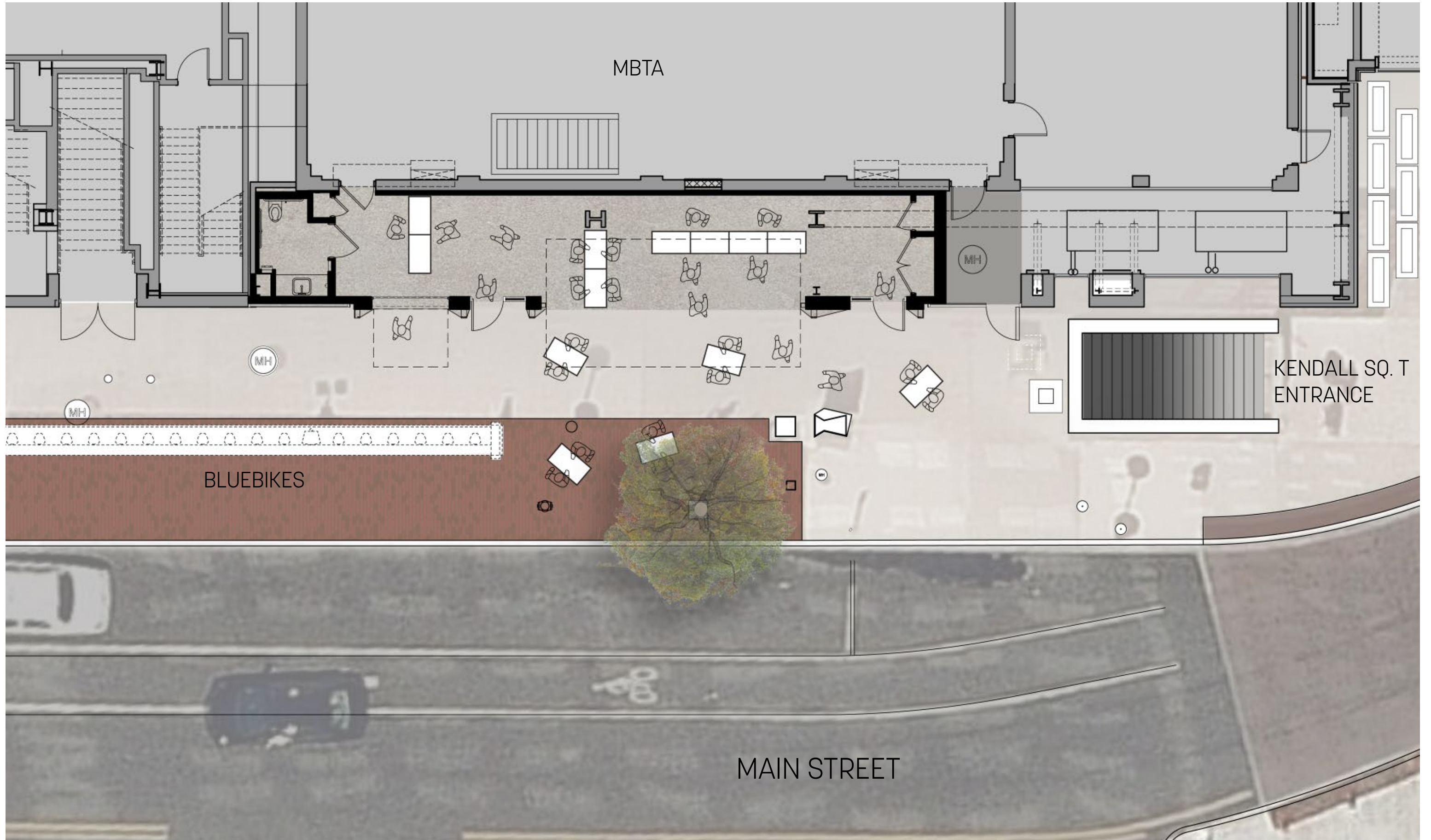
# BASE CONDITION SITE PLAN



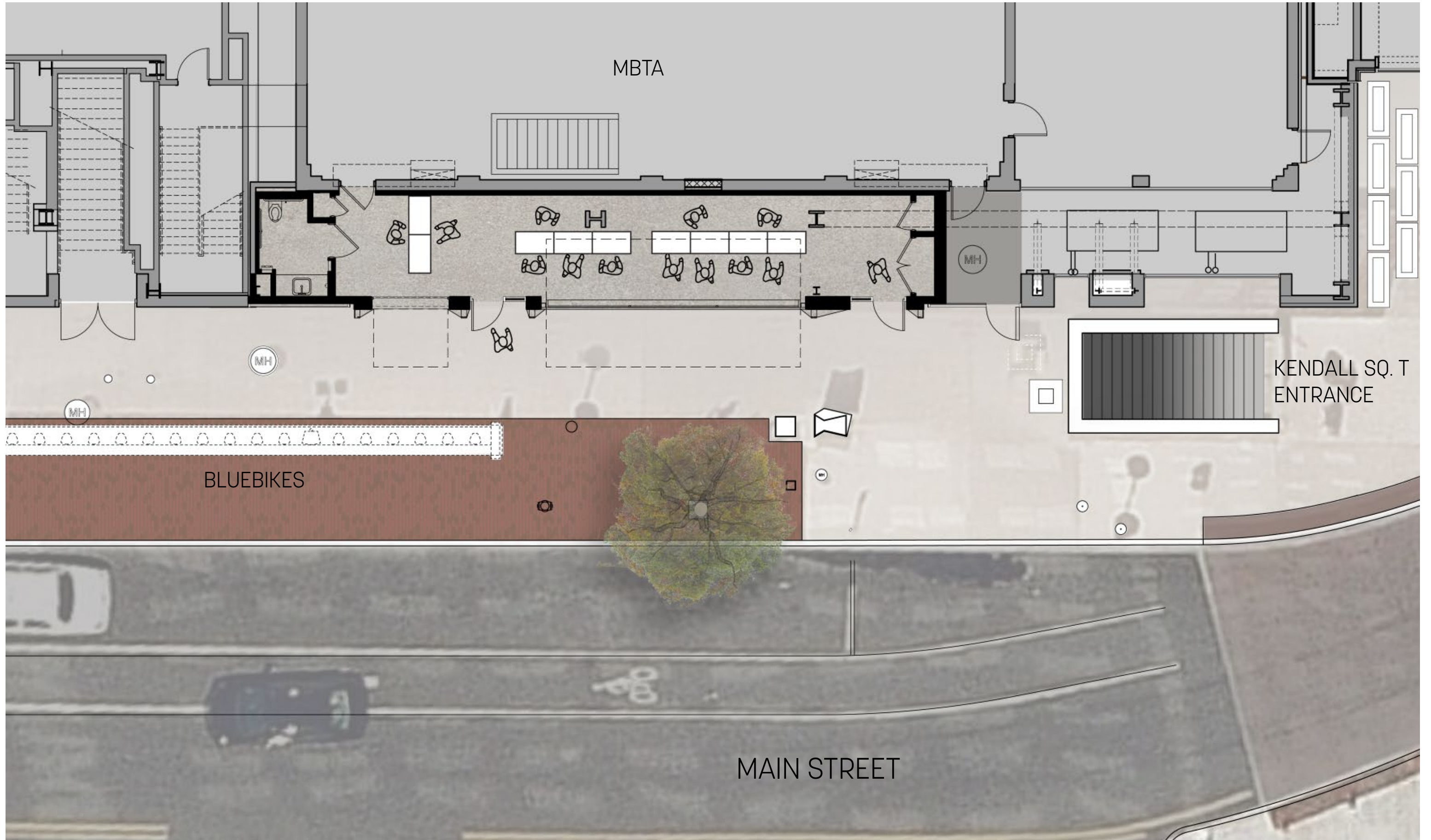
# BASE CONDITION



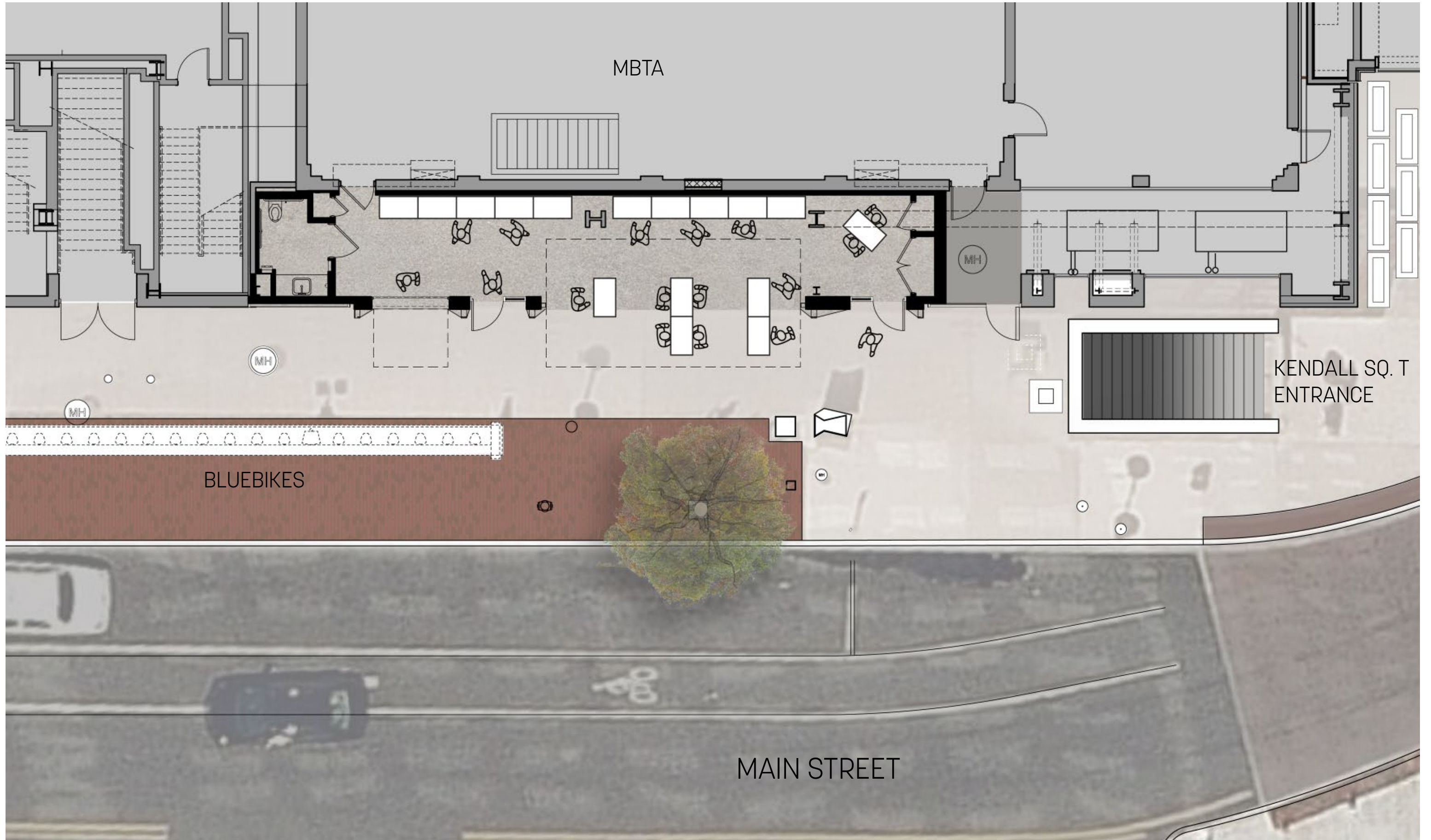
# FOOD VENDOR - OPEN



# FOOD VENDOR - CLOSED

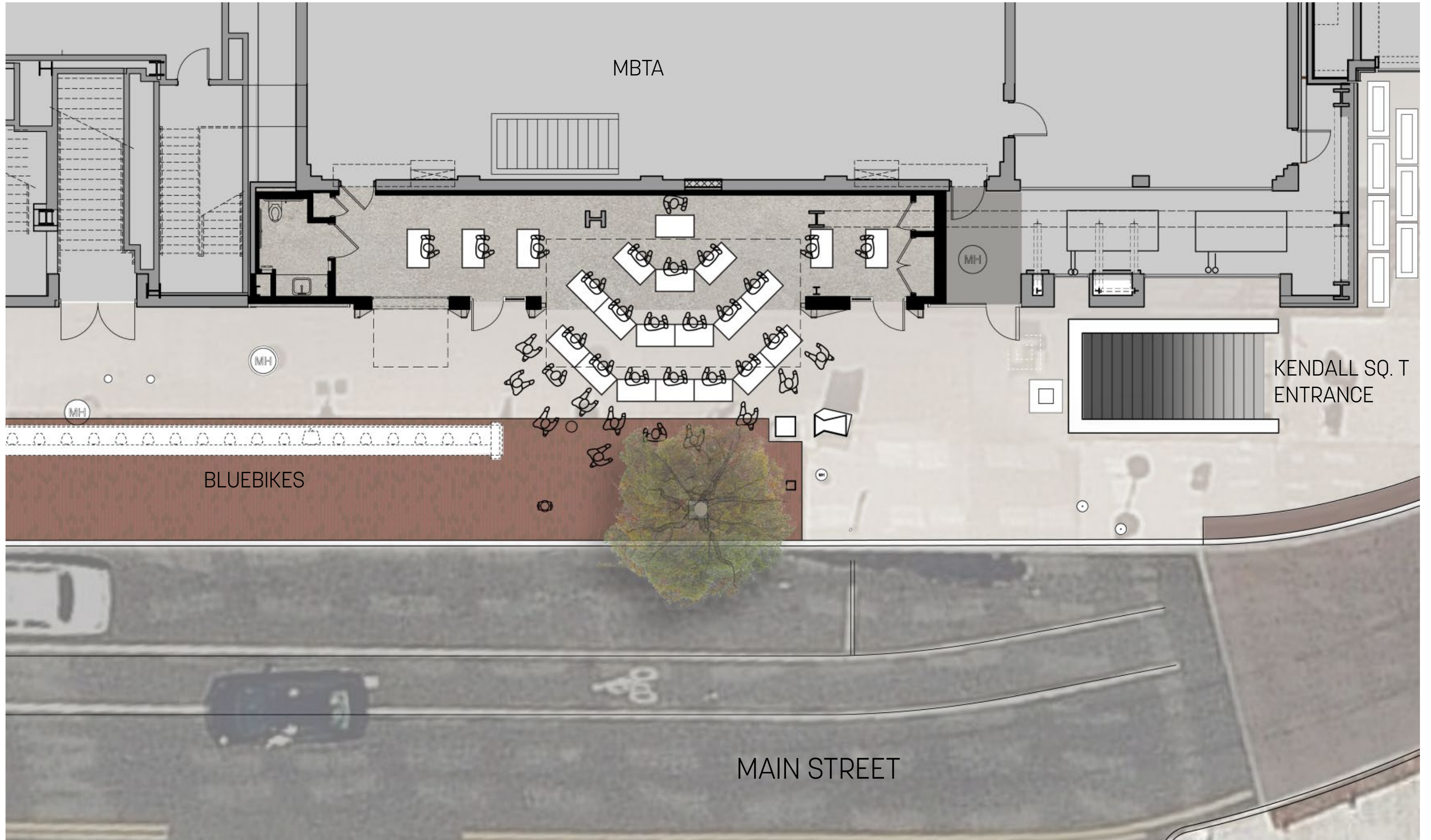


# RETAIL VENDOR - OPEN

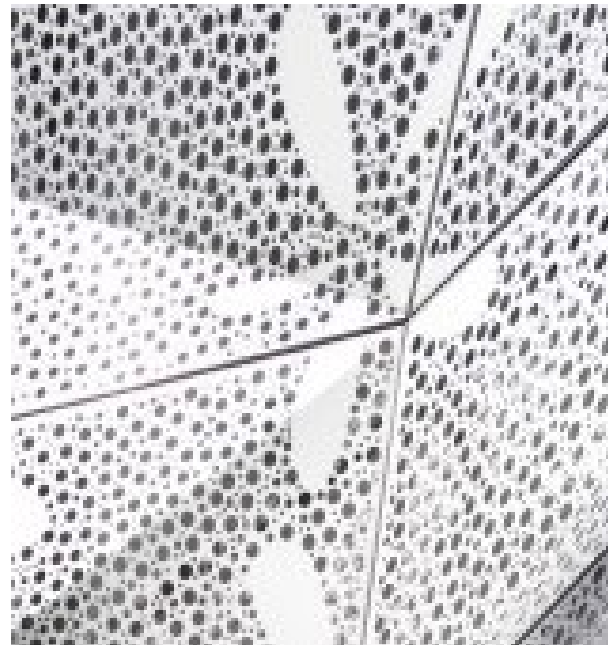
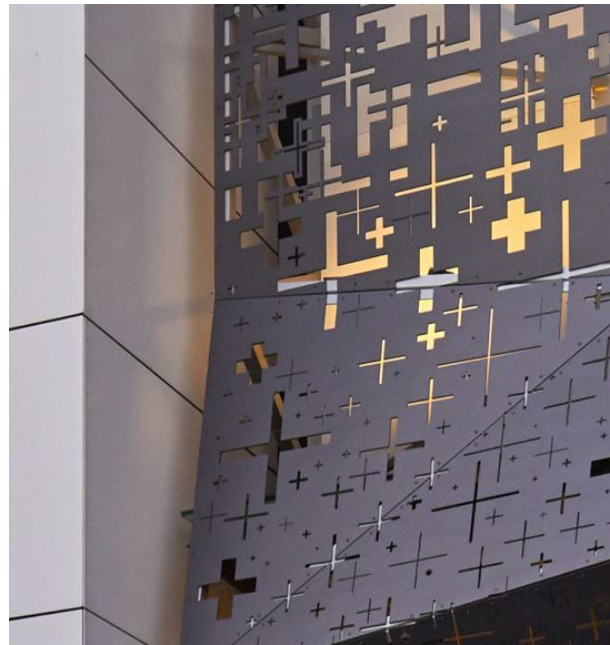
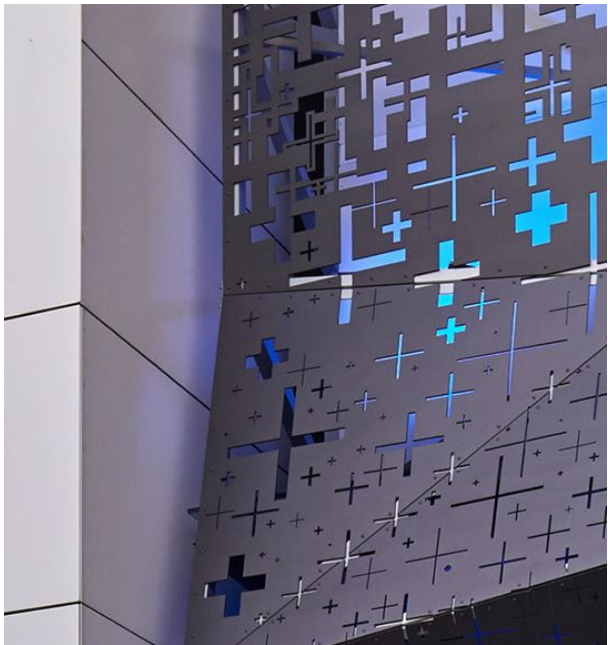




# PRESENTATION - OPEN



# MATERIAL PRECEDENTS



PERFORATED METAL PANEL



TRANSLUCENT FACADE MATERIALS: POLYCARBONATE

# EXISTING CONDITIONS



JAN 24 2019

**bxp** Boston Properties®

**SASAKI**

# PROPOSED VIEW LOOKING WEST: POLYCARBONATE FACADE



# PROPOSED VIEW LOOKING WEST: POLYCARBONATE FACADE



# PROPOSED VIEW LOOKING EAST: POLYCARBONATE FACADE (LIT)



# POTENTIAL USE: INTERIOR VIEW LOOKING EAST- EATERY SCENE



# POTENTIAL USE: INTERIOR VIEW LOOKING EAST -RETAIL SCENE





# FOLDING DOOR: CROWN 50 / 50 - DOOR ARMATURE WORKS

