

SASAKI

THE KENDALL CENTER ADAPTER

April 10th 2019

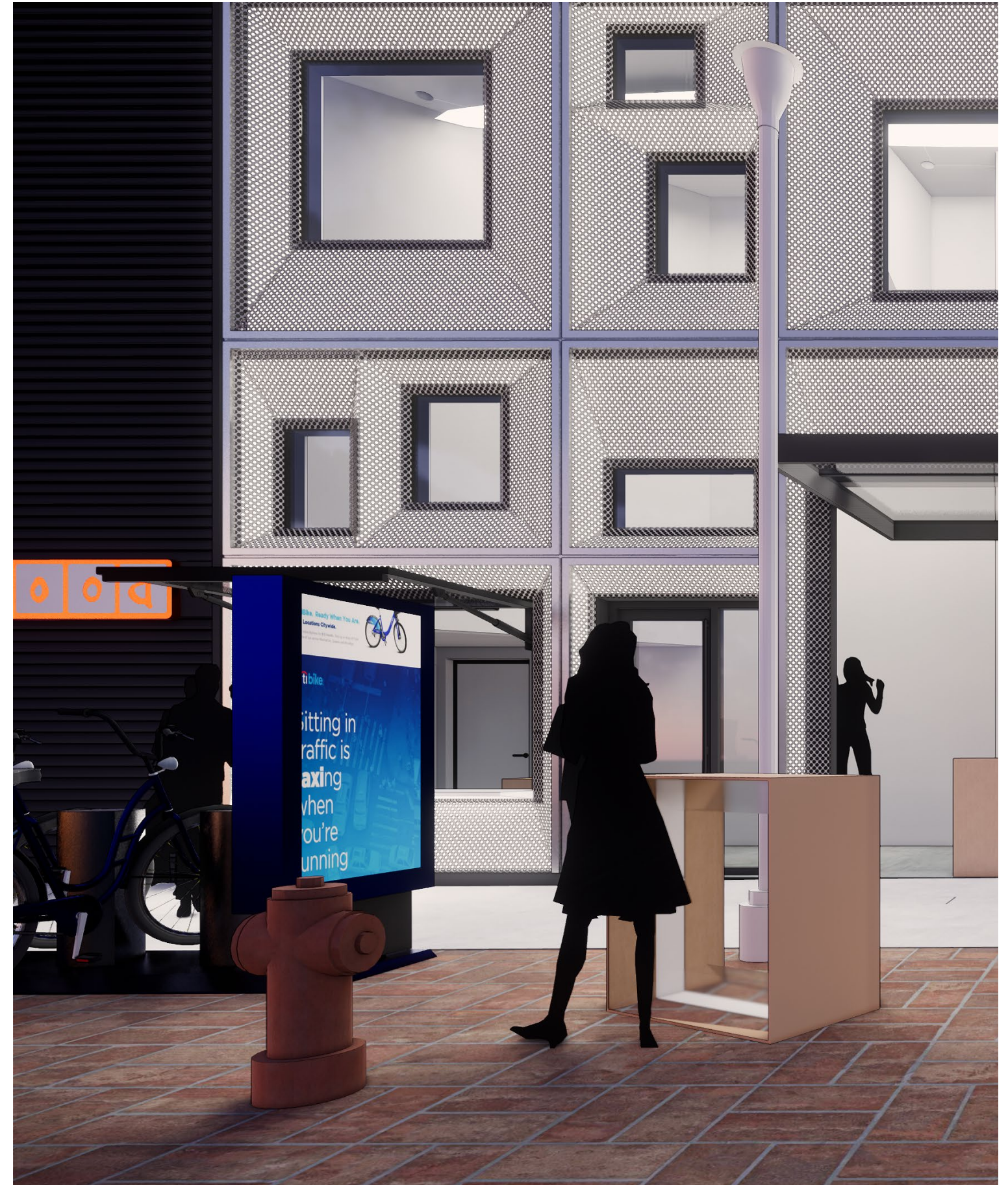
DETAIL VIEW: PERFORATED METAL PANEL (PATTERN TBD)



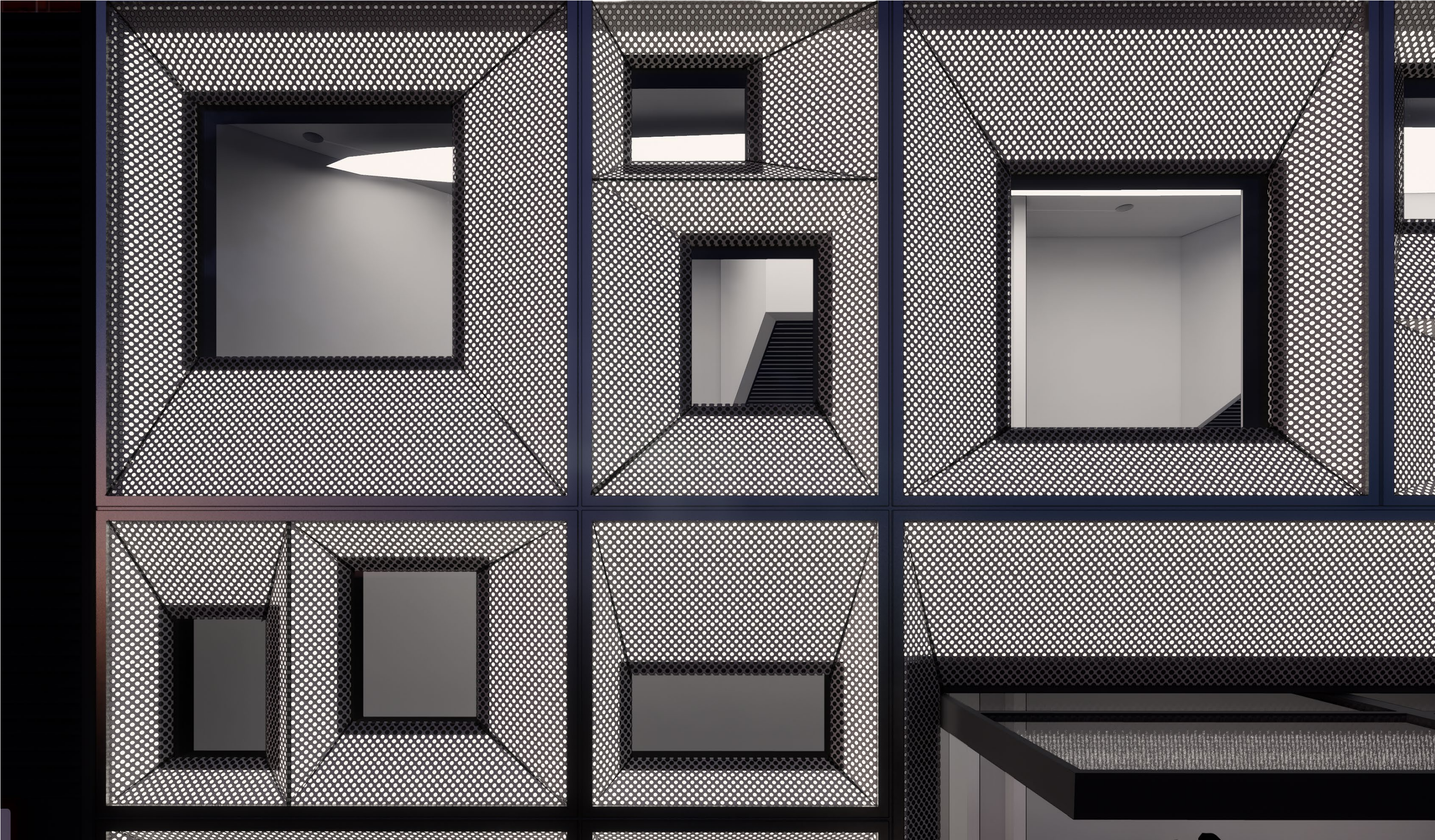
DETAIL VIEW: PERFORATED METAL PANEL (PATTERN TBD)



DETAIL VIEW: PERFORATED METAL PANEL (PATTERN TBD)

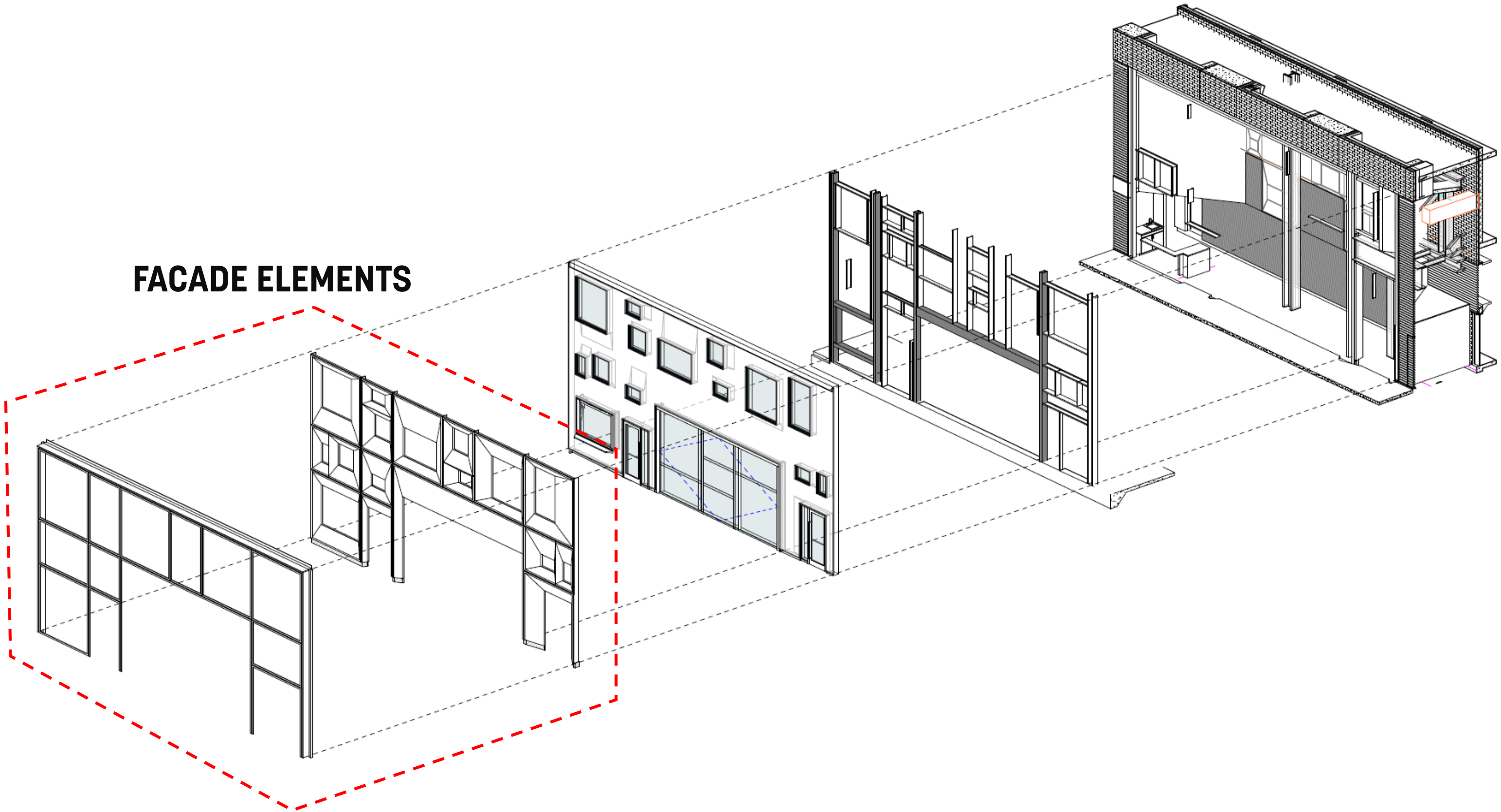


DETAIL VIEW: PERFORATED METAL PANEL (PATTERN TBD)

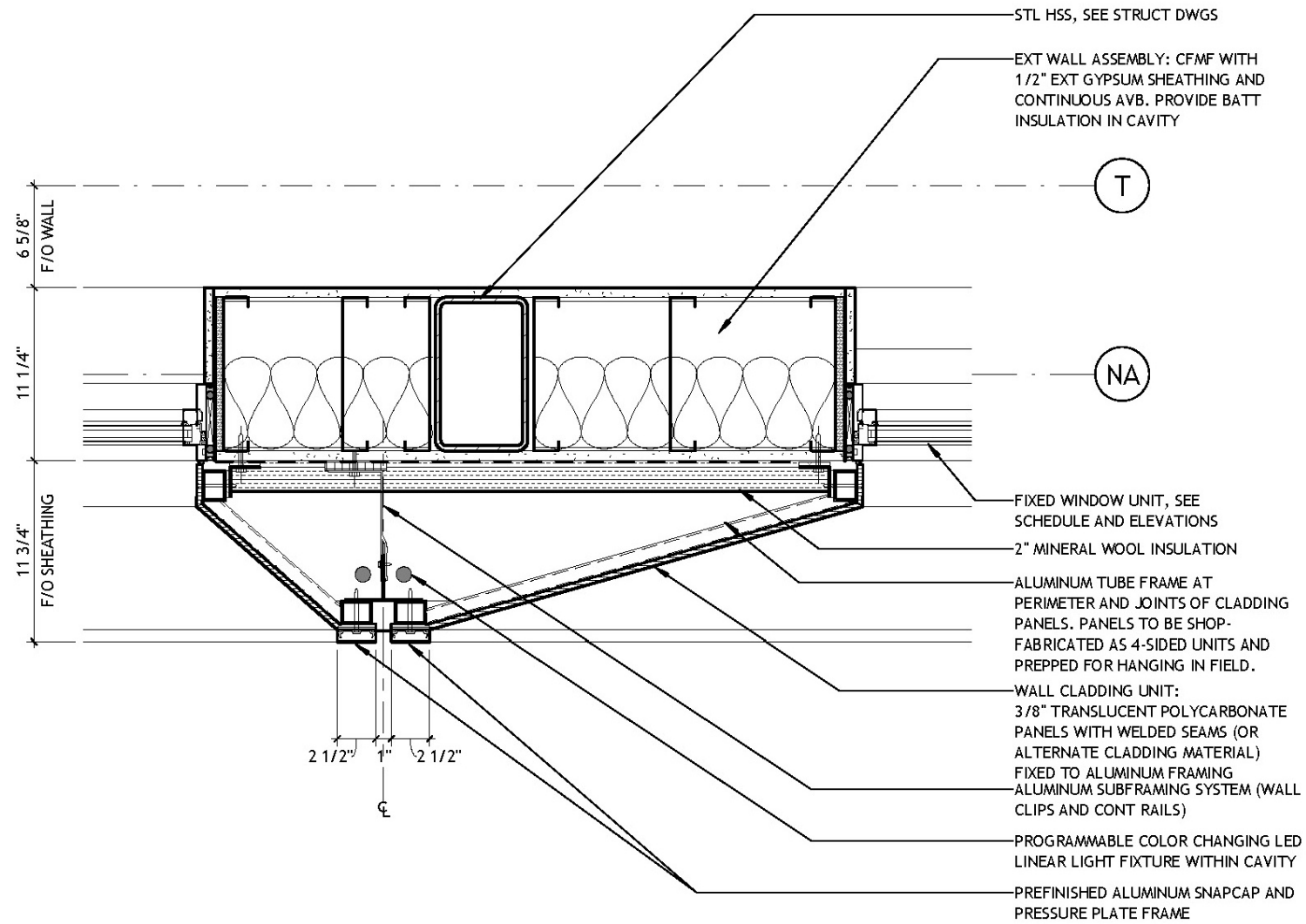


OVERALL EXPLODED AXON

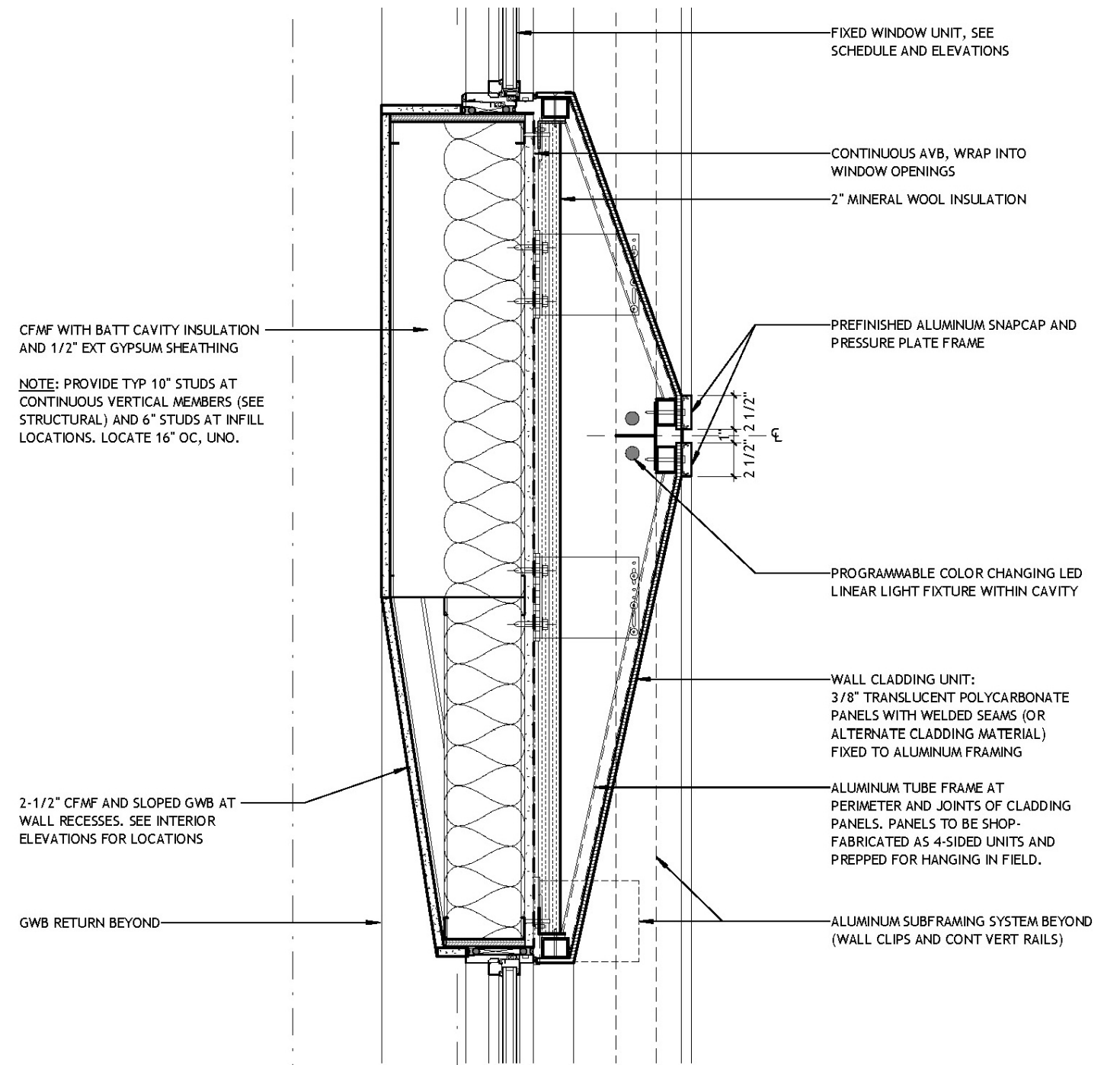
FACADE ELEMENTS



DETAIL VIEW: TYPICAL PANEL PLAN AND SECTION

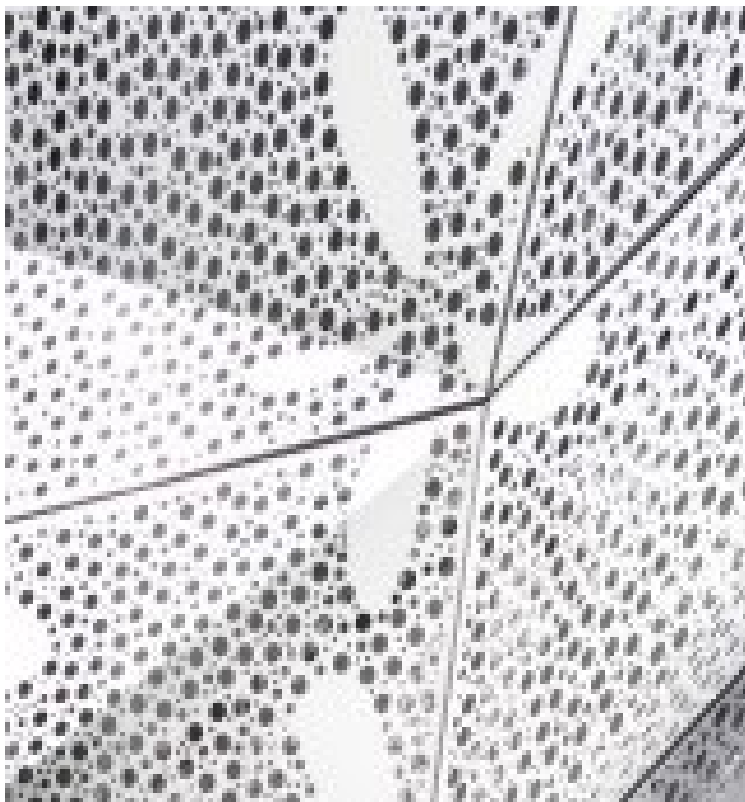
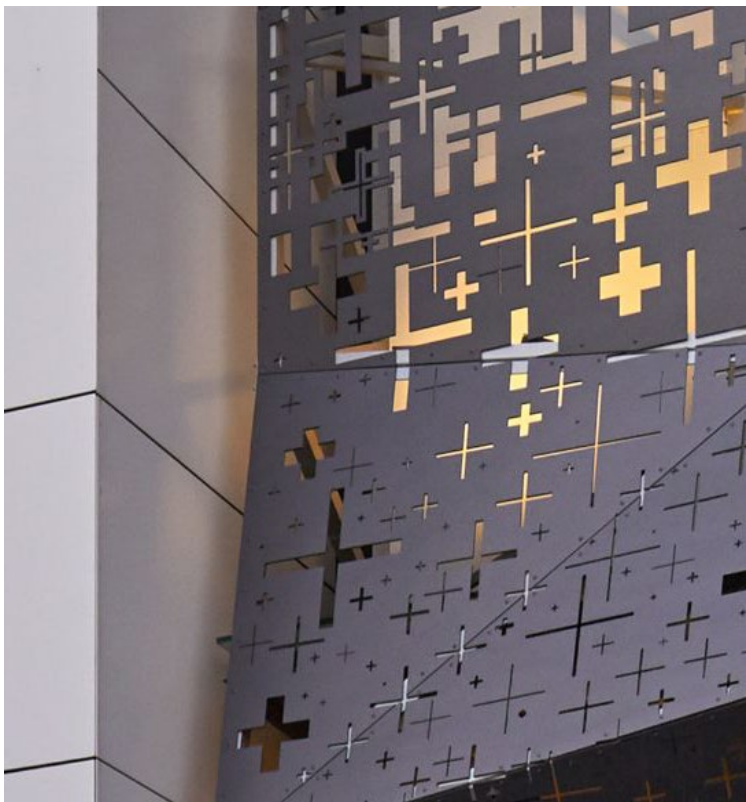
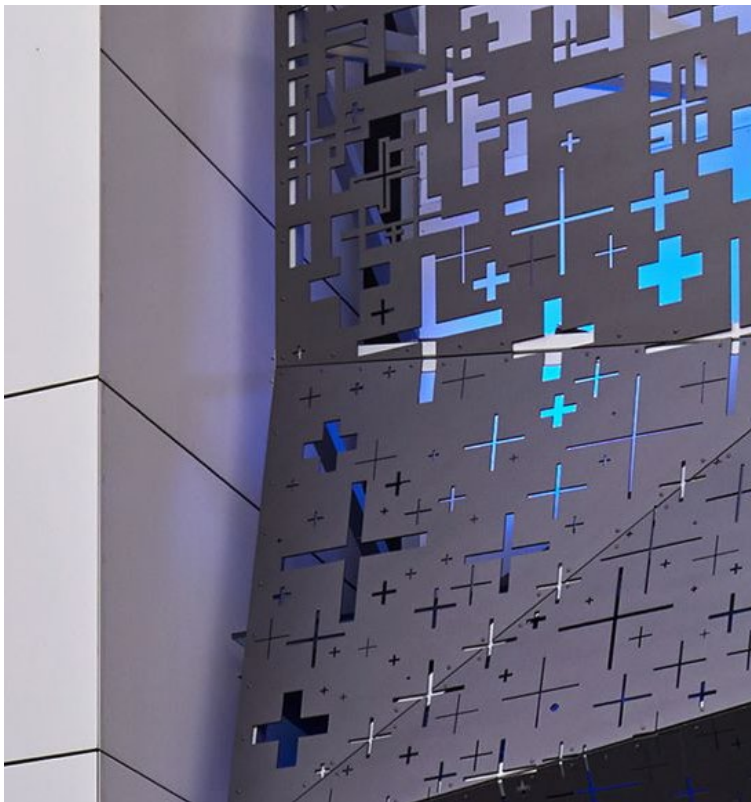


7 PD - CLADDING PANEL TYP VERTICAL JOINT
1 1/2" = 1'-0"



5 SD - CLADDING PANEL TYP HORIZONTAL JOINT
1 1/2" = 1'-0"

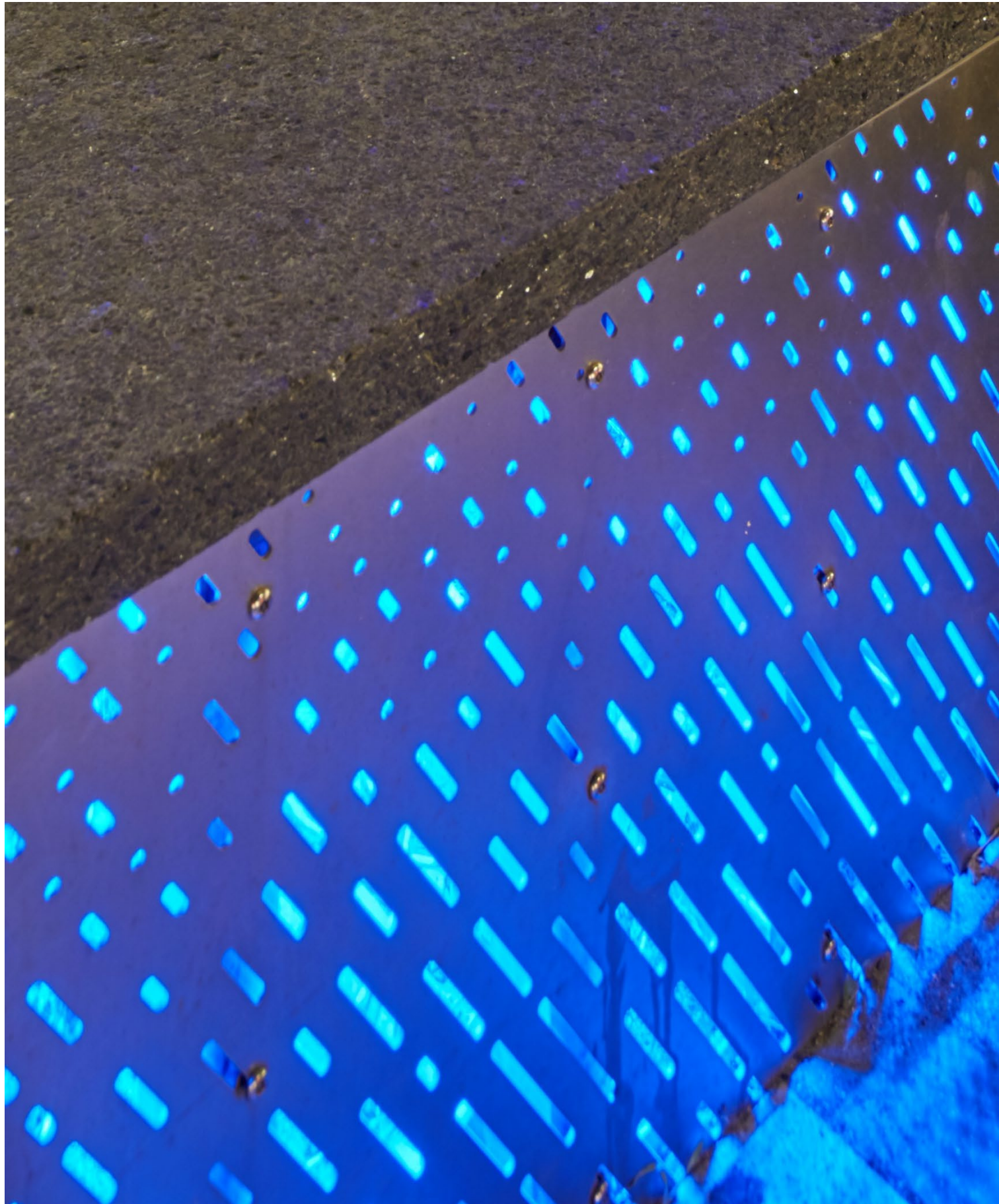
MATERIAL PRECEDENTS: PERFORATED METAL PANEL



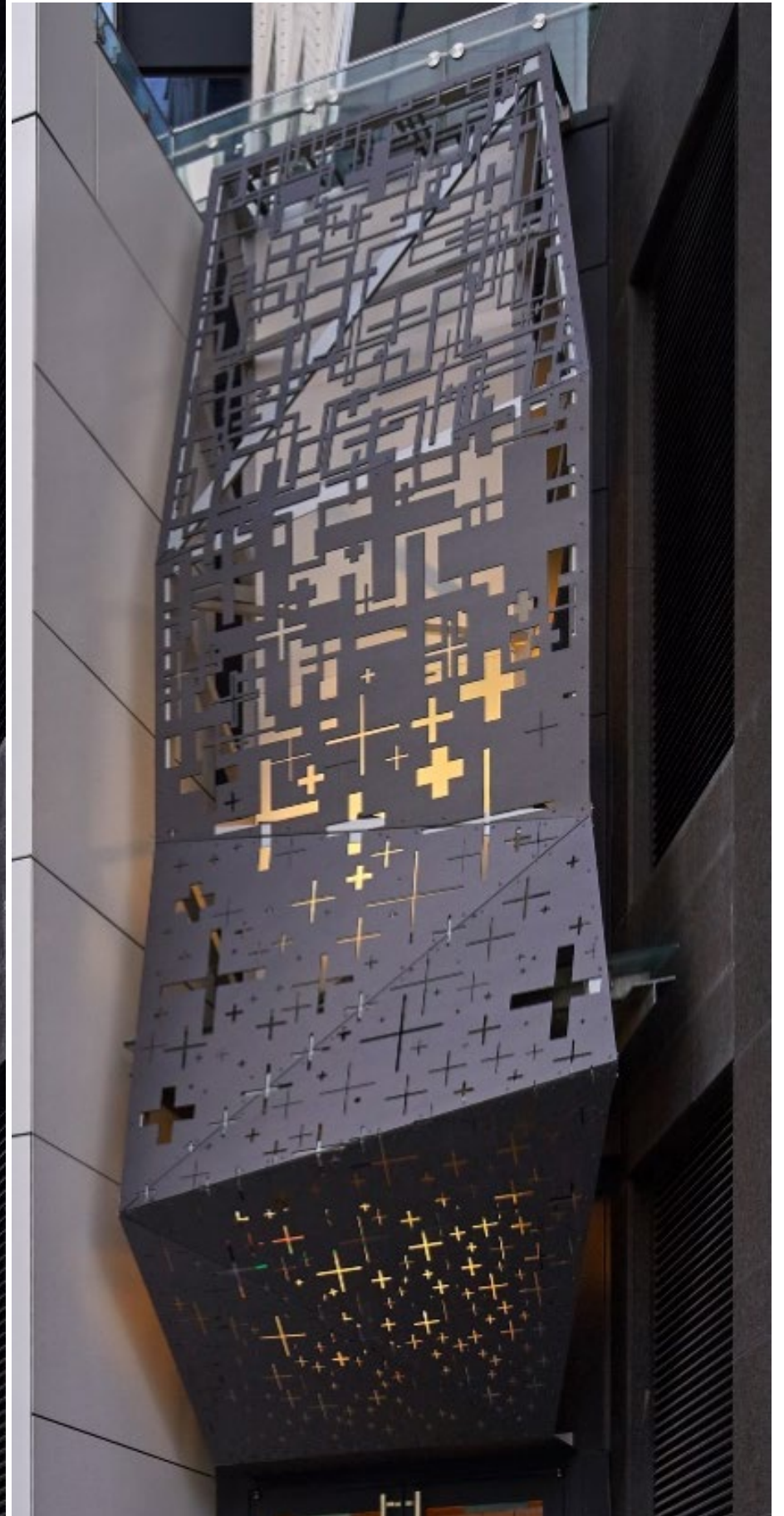
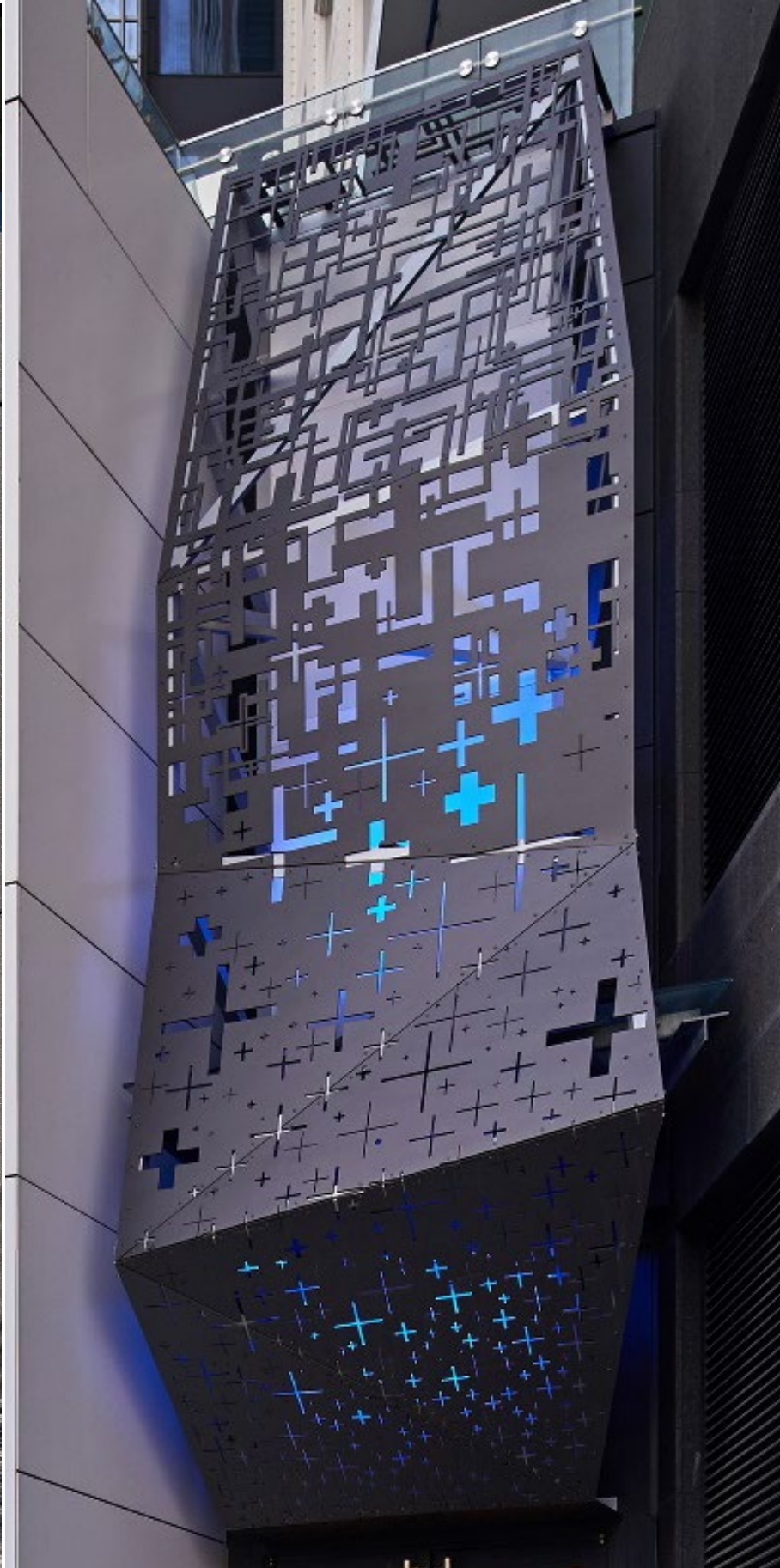
PRECEDENTS: PERFORATED METAL WITH PATTERN GRAPHIC



SOCIETY OF ARTS AND CRAFTS: SASAKI



PRECEDENTS: BACKLIT PERFORATED METAL WITH PATTERN GRAPHIC



SOCIETY OF ARTS AND CRAFTS: SASAKI