



Mr. Tom Evans
Cambridge Redevelopment Authority
255 Main Street. 8th Floor.
Cambridge, MA 02142

Dear Mr. Evans and Cambridge Redevelopment Authority Board Members,

Please find the submitted information for the CIC blade sign at 255 Main Street. We will also be providing the board with illustrative drawings at next Wednesday's meeting.

The dimensions and specifications are located on page 2. The full sign size is based on materials provided by the CRA, and is based on our understanding of the dimensions of the previous Microsoft blade sign. Information for our smaller CIC logo size and depth have been developed by our sign manufacturer and internal design team.

The sign will be double sided, with a smaller logo on the back side and a larger logo on the front. The sign will be illuminated.

We've also included photos of the old Microsoft blade sign and rendering of what our sign will look like on pages 3-6.

Sincerely,

Brendan Sullivan
Project Manager



Specification for Blade Sign;

CIC Logo Size Front: 22.6" x 42"

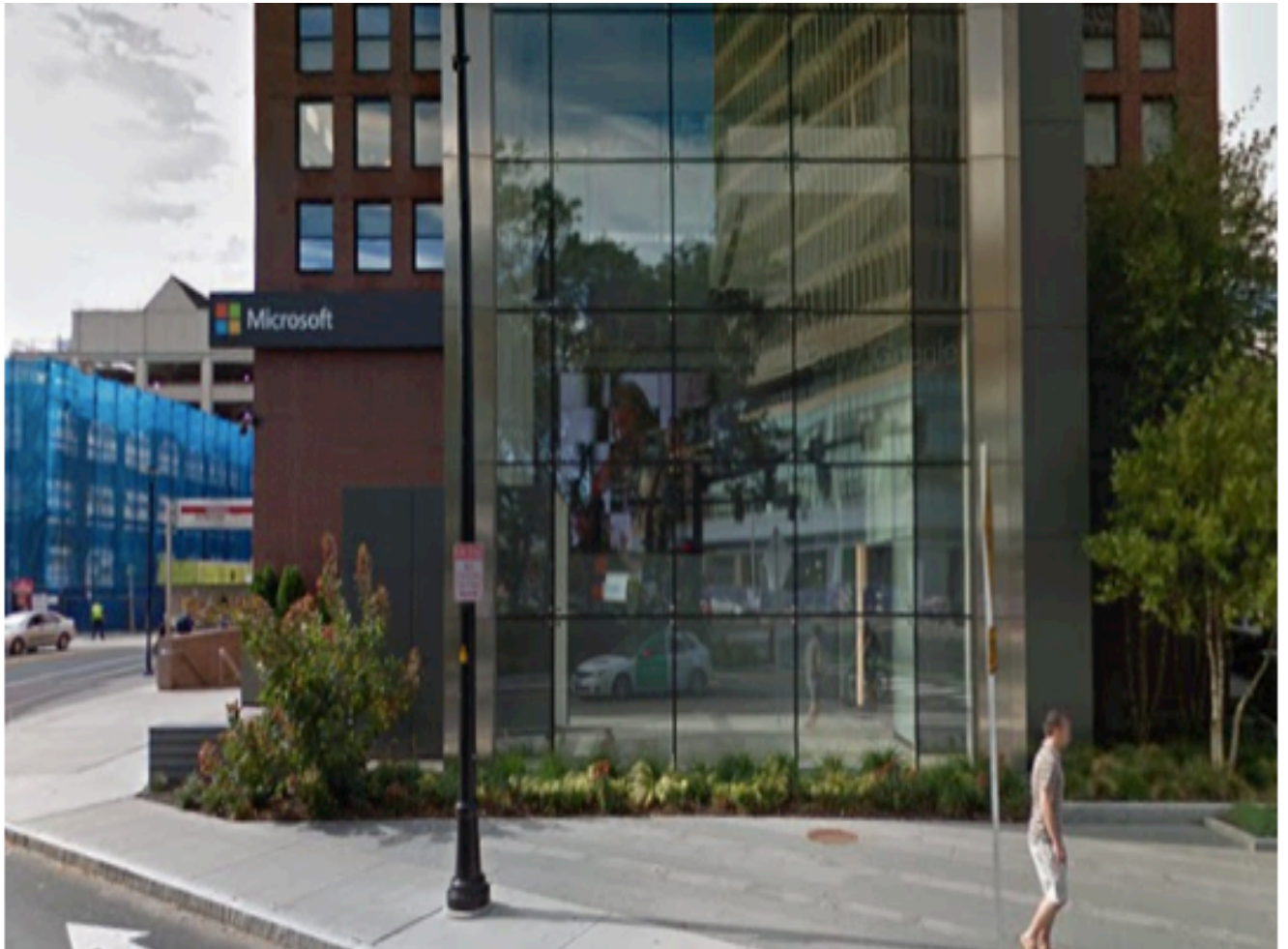
Full Sign Size: 28' x 44"

Depth: 4" (estimated)

Note: The sign will be illuminated and there will be a small logo on the back.



Previous Microsoft Sign;



cic

Back of Sign;





New CIC Sign Rendering;



NOTE: The above is intended to be illustrative as it represents the height and length of the sign. The actual dimensions are as provided.



Back of sign;

