

Bank of America
88 Ames Street, Cambridge MA

11-10-17

- Full color halo lit logo
- Red awning
- Red flagscape on interior wall at entrance
- Enterprise banners
- Interior ceiling elements



- Full color halo lit logo
- Red awning
- Red flagscape on interior wall at entrance
- Enterprise banners
- Interior ceiling elements



Screens behind glass wrapping corner





LOCATION INFORMATION

Kendall
88 Ames Street
Cambridge, MA

DM: warren.bowes
@bankofamerica.com

PRE TF-IFO

- (7) OFFICES
- (2) ATM DAY 1
- (1) ATM FUTURE (For Future ATM it need to convert to ATM/Belly Pack)
- (3) TELLERS
- (10) WAIT SEATING
- (4) UCC
- (1) WU Night Drop

MLWM (2,700 sf)

- (4) OFFICES
- (7) WORK STATIONS
- (1) CONFERENCE ROOM
- (6) WAIT SEATING

BUILDING SIZE:

ground floor: 1,332 s.f.
second floor: 8,303 s.f.

Store Design

chang.song@cbre.com
jiwon.sun@cbre.com
emily.pusateri@cbre.com
Issue Date: 10.06.2017 Rev: 6

Copyright.

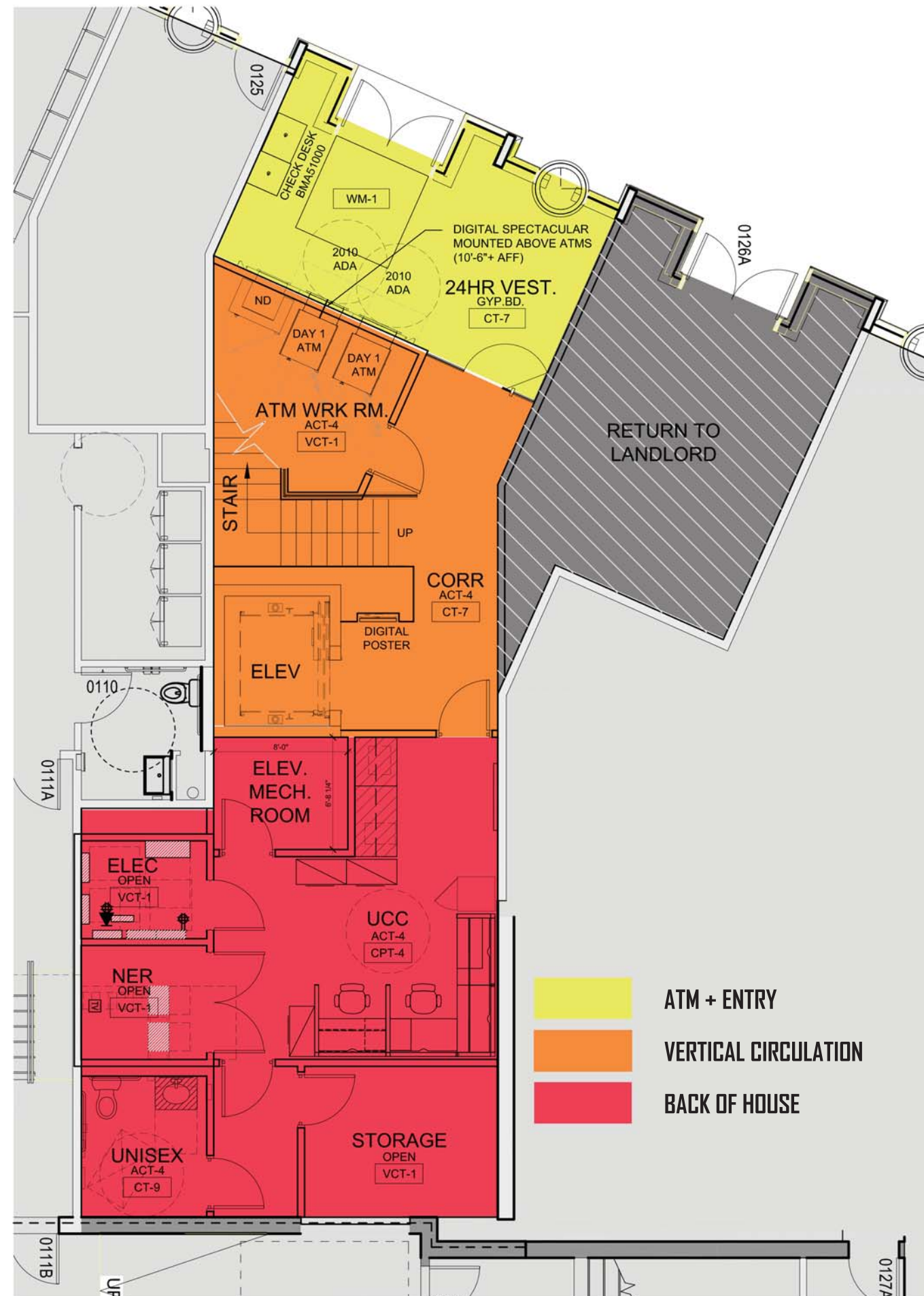
This drawings is for design intent purposes only and does not represent a necessarily ideal or realistically viable solution. These drawings shall remain the exclusive property of Bank of America and designated Vendor to whom the work was directed and/or managed. All rights and privileges are reserved by Bank of America. These drawings shall not be duplicated without prior written permission of Bank of America or its designated Vendor.

SCALE: NOT TO SCALE

TF-1.1



CONFIDENTIAL AND PROPRIETARY



A Proposed Floor Plan

LOCATION INFORMATION

Kendall
88 Ames Street
Cambridge, MA

DM: warren.bowes
@bankofamerica.com

PRE TF-IFO

- (7) OFFICES
- (2) ATM DAY 1
- (1) ATM FUTURE (For Future ATM it need to convert to ATM/Belly Pack)
- (3) TELLERS
- (10) WAIT SEATING
- (4) UCC
- (1) WU Night Drop

MLWM (2,700 sf)

- (4) OFFICES
- (7) WORK STATIONS
- (1) CONFERENCE ROOM
- (6) WAIT SEATING

BUILDING SIZE:

ground floor: 1,332 s.f.
second floor: 8,303 s.f.

Store Design

chang.song@cbre.com
jiwon.sun@cbre.com

emily.pusateri@cbre.com
Issue Date: 10.06.2017 Rev: 6

Copyright.

This drawings is for design intent purposes only and does not represent a necessarily ideal or realistically viable solution. These drawings shall remain the exclusive property of Bank of America and designated Vendor to whom the work was directed and/or managed. All rights and privileges are reserved by Bank of America. These drawings shall not be duplicated without prior written permission of Bank of America or its designated Vendor.

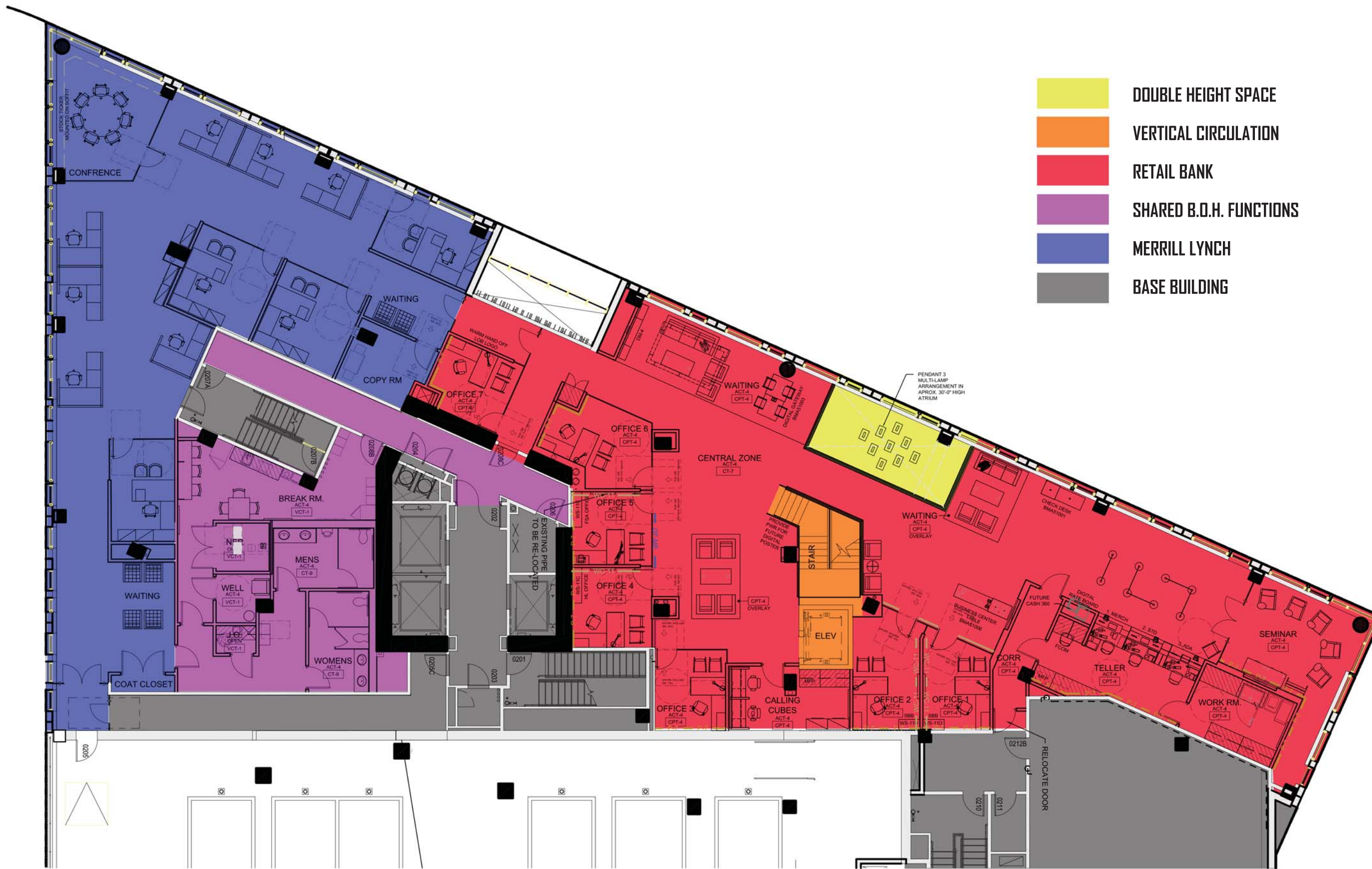
SCALE: NOT TO SCALE

TF-2.1



CONFIDENTIAL AND PROPRIETARY

- DOUBLE HEIGHT SPACE
- VERTICAL CIRCULATION
- RETAIL BANK
- SHARED B.O.H. FUNCTIONS
- MERRILL LYNCH
- BASE BUILDING



A Proposed Floor Plan

LOCATION INFORMATION

Kendall
88 Ames Street
Cambridge, MA
DM: warren.bowes
@bankofamerica.com

PRE TF-IFO

- (7) OFFICES
- (2) ATM DAY 1
- (1) ATM FUTURE (For Future ATM it need to convert to ATM/Belly Pack)
- (3) TELLERS
- (10) WAIT SEATING
- (4) UCC
- (1) WU Night Drop

MLWM (2,700 sf)

- (4) OFFICES
- (7) WORK STATIONS
- (1) CONFERENCE ROOM
- (6) WAIT SEATING

BUILDING SIZE:
ground floor: 1,332 s.f.
second floor: 8,303 s.f.

Store Design

chang.song@cbre.com
jiwon.sun@cbre.com
emily.pusateri@cbre.com
Issue Date: 10.06.2017 Rev: 6

Copyright.

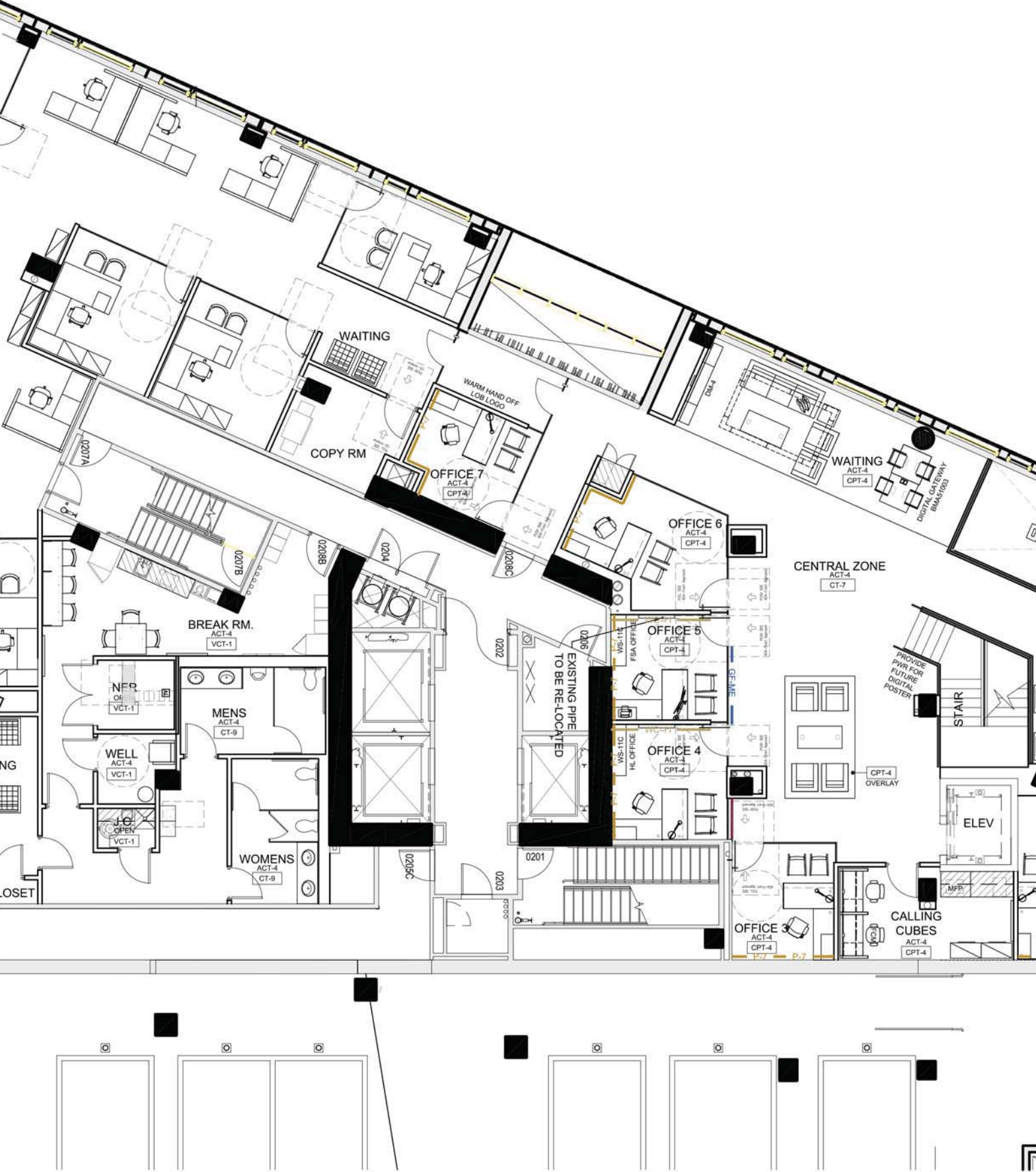
This drawings is for design intent purposes only and does not represent a necessarily ideal or realistically viable solution. These drawings shall remain the exclusive property of Bank of America and designated Vendor to whom the work was directed and/or managed. All rights and privileges are reserved by Bank of America. These drawings shall not be duplicated without prior written permission of Bank of America or its designated Vendor.

SCALE: NOT TO SCALE

A Key Plan



B Proposed Floor Plan



LOCATION INFORMATION

Kendall
88 Ames Street
Cambridge, MA

DM: warren.bowes
@bankofamerica.com

PRE TF-IFO

- (7) OFFICES
- (2) ATM DAY 1
- (1) ATM FUTURE (For Future ATM it need to convert to ATM/Belly Pack)
- (3) TELLERS
- (10) WAIT SEATING
- (4) UCC
- (1) WU Night Drop

MLWM (2,700 sf)

- (4) OFFICES
- (7) WORK STATIONS
- (1) CONFERENCE ROOM
- (6) WAIT SEATING

BUILDING SIZE:
ground floor: 1,332 s.f.
second floor: 8,303 s.f.

Store Design

chang.song@cbre.com
jiwon.sun@cbre.com
emily.pusateri@cbre.com
Issue Date: 10.06.2017 Rev: 6

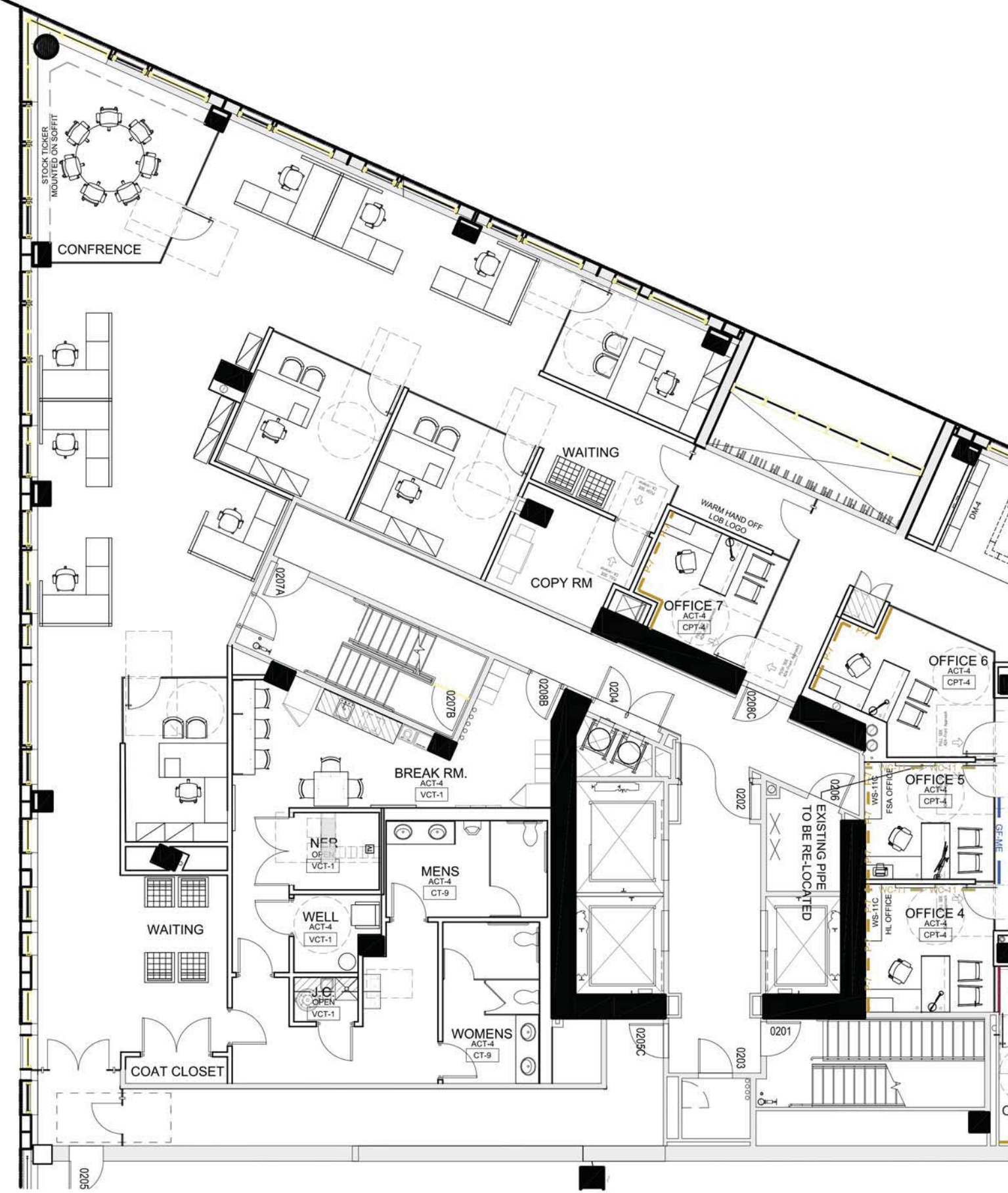
Copyright.

This drawings is for design intent purposes only and does not represent a necessarily ideal or realistically viable solution. These drawings shall remain the exclusive property of Bank of America and designated Vendor to whom the work was directed and/or managed. All rights and privileges are reserved by Bank of America. These drawings shall not be duplicated without prior written permission of Bank of America or its designated Vendor.

SCALE: NOT TO SCALE



A Key Plan



B Proposed Floor Plan

LOCATION INFORMATION

Kendall
88 Ames Street
Cambridge, MA

DM: warren.bowes
@bankofamerica.com

PRE TF-IFO

- (7) OFFICES
- (2) ATM DAY 1
- (1) ATM FUTURE (For Future ATM it need to convert to ATM/Belly Pack)
- (3) TELLERS
- (10) WAIT SEATING
- (4) UCC
- (1) WU Night Drop

MLWM (2,700 sf)

- (4) OFFICES
- (7) WORK STATIONS
- (1) CONFERENCE ROOM
- (6) WAIT SEATING

BUILDING SIZE:
ground floor: 1,332 s.f.
second floor: 8,303 s.f.

Store Design

chang.song@cbre.com
jiwon.sun@cbre.com
emily.pusateri@cbre.com
Issue Date: 10.06.2017 Rev: 6

Copyright.

This drawings is for design intent purposes only and does not represent a necessarily ideal or realistically viable solution. These drawings shall remain the exclusive property of Bank of America and designated Vendor to whom the work was directed and/or managed. All rights and privileges are reserved by Bank of America. These drawings shall not be duplicated without prior written permission of Bank of America or its designated Vendor.

SCALE: NOT TO SCALE

TF-2.1



SIGNAGE OR STRETCH SCREEN ON SOFFIT

STATIC GRAPHIC

DIGITAL SPECTACULAR BETWEEN 10'-6" AFF AND 19'-0" AFF ON FIRST FLOOR

STRETCH SCREEN OR OTHER DIGITAL ELEMENT ABOVE TELLER LINE HEADER

BofA STATIC GRAPHIC

