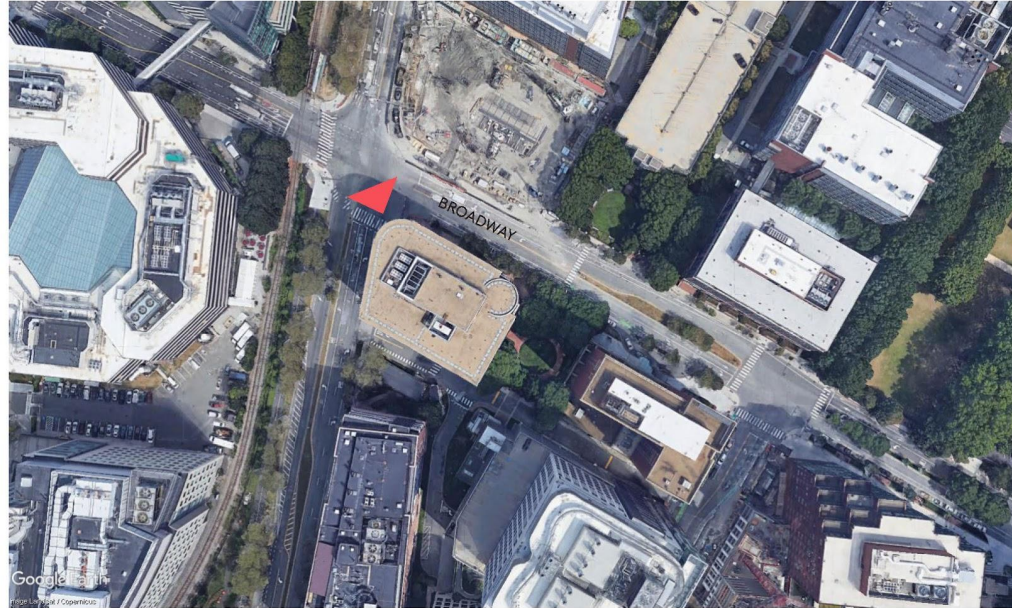
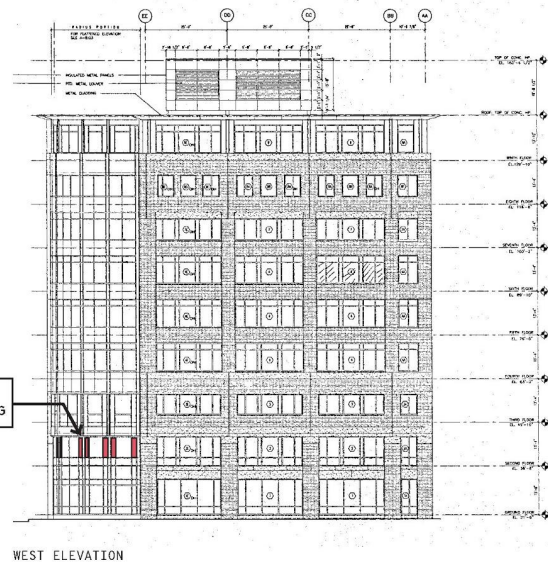


8CC EL OCHO - 150 BROADWAY, CAMBRIDGE

# PROPOSED - 2nd Floor Glazing





10 EXISTING SOLID PANELS SIZED  
+/- 1'-3" X 6'-7" TO BE  
REPLACED WITH NEW GLAZING



EXISTING



PROPOSED



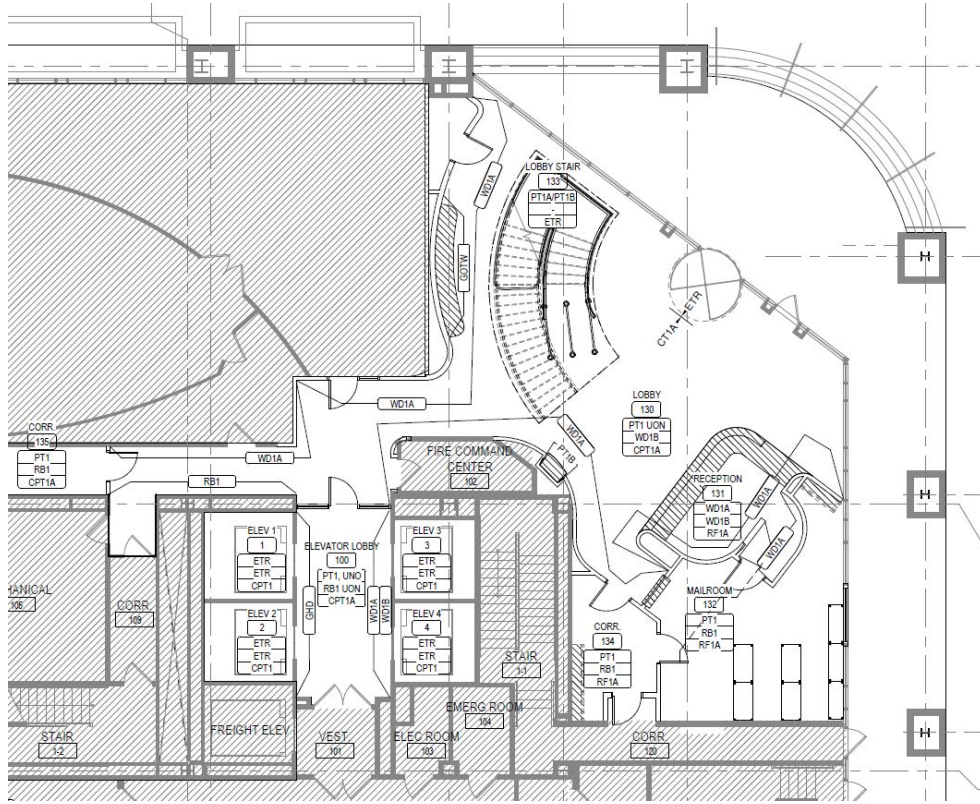
8CC EL OCHO - 150 BROADWAY, CAMBRIDGE

# PROPOSED EXTERIOR / PUBLIC SCOPE

8CC EL OCHO - 150 BROADWAY, CAMBRIDGE

# LOBBY

# 8CC - FIRST FLOOR LOBBY FINISHES

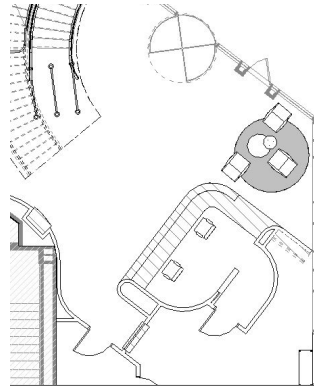
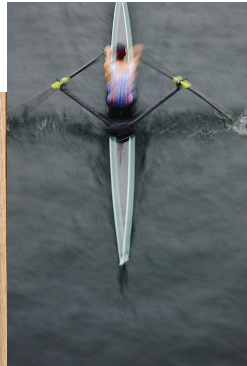
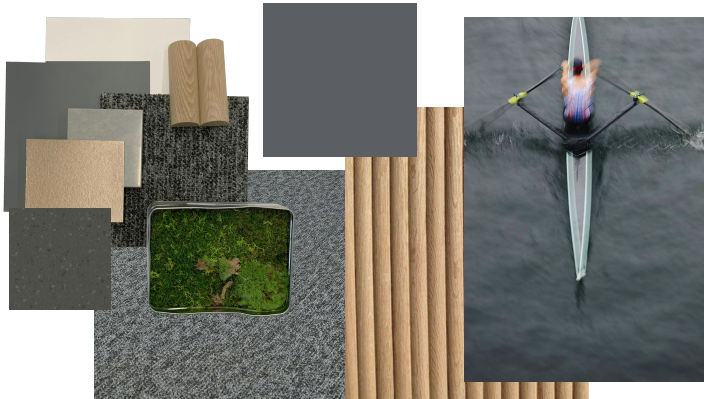


# 8CC - FIRST FLOOR LOBBY RENDERING





# 1ST FLOOR LOBBY - RECEPTION



8CC EL OCHO - 150 BROADWAY, CAMBRIDGE

# SIGNAGE

8CC - EXTERIOR SIGNAGE REMOVAL



EXISTING



PROPOSED



8CC - ENTRY SIGNAGE



EXISTING



PROPOSED

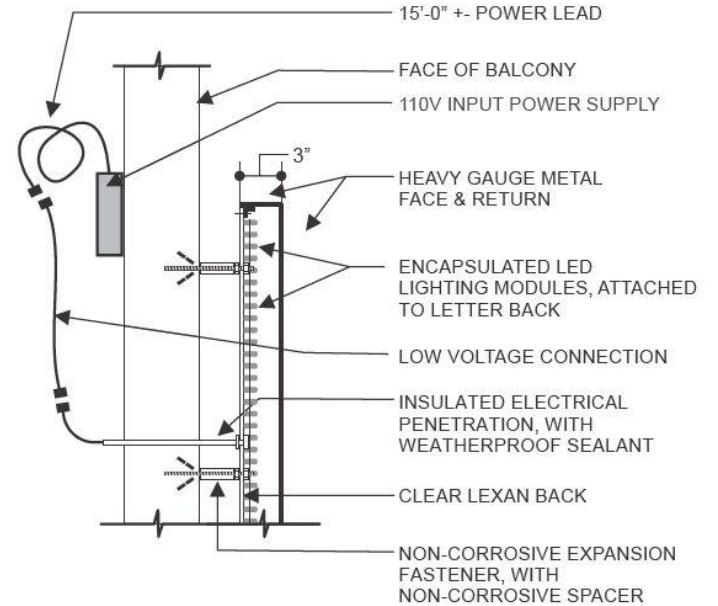


## 8CC - ENTRY SIGNAGE ILLUMINATION

PROPOSED HALO-LIT; EXISTING - FACE-LIT



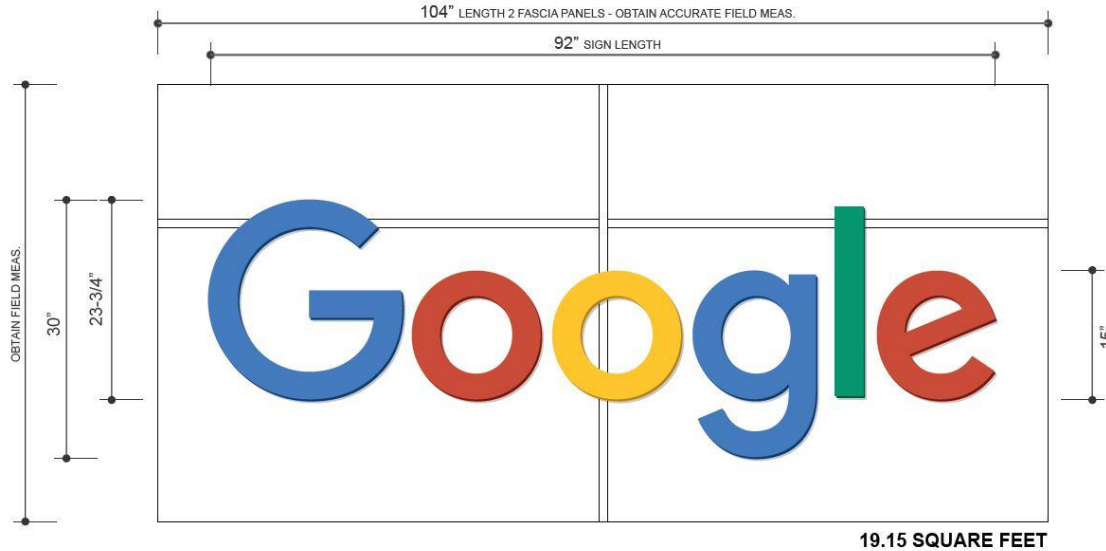
② NIGHT TIME PHOTO COMP  
NTS



③ SCHEMATIC SECTION  
NTS

# 8CC - ENTRY SIGNAGE DETAIL

PROPOSED 19.15 SF

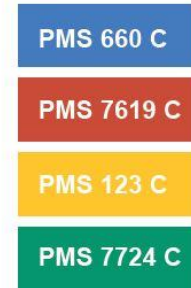


① ELEVATION DETAIL AT SIGN LOCATION  
3/4" = 1'-0"

## HALO-LIT BUILDING SIGNAGE

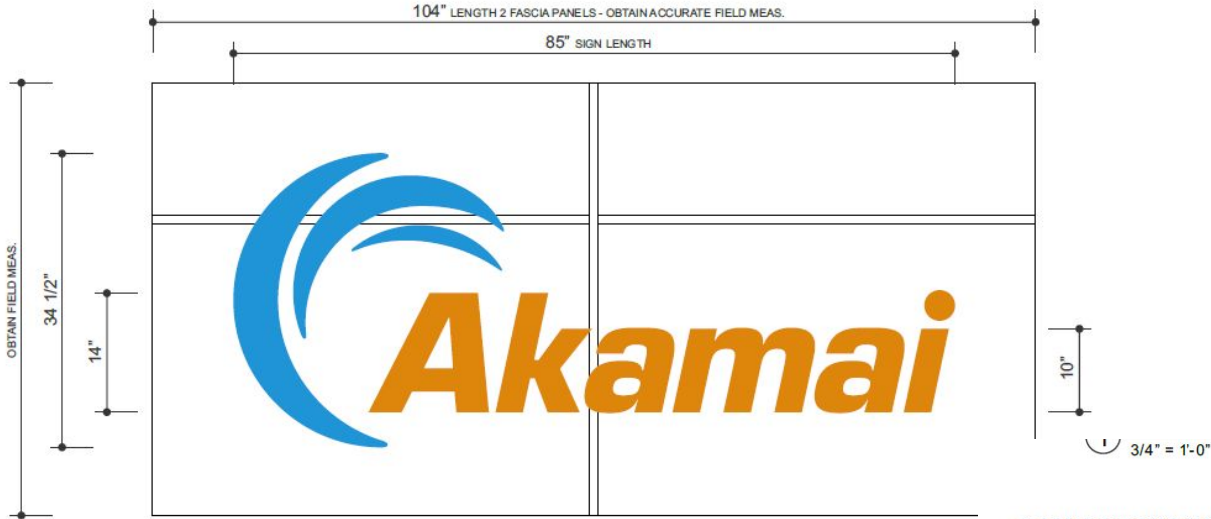
REVERSE CHANNEL FABRICATED LETTERS WITH HEAVY GAUGE METAL FACES AND RETURNS, 3" DEEP, PAINTED SATIN FINISH PMS COLORS AS NOTED. CHANNELS TO BE HALO-LIT IN WHITE WITH LED LIGHTING COMPONENTS ATTACHED TO CLEAR LEXAN BACKS AND POWERED BY REMOTE LOW VOLTAGE POWER SUPPLIES.

SIGNAGE TO BE ON EXISTING FACE OF BUILDING WITH NON-CORROSIVE FASTENERS AND SPACERS.



# 8CC - ENTRY SIGNAGE DETAIL

EXISTING 20.4 SF



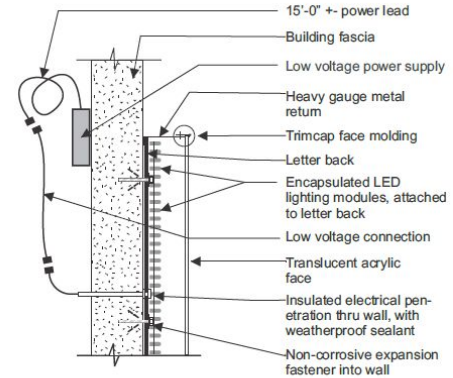
1 ELEVATION DETAIL AT SIGN LOCATION

## FACE-LIT BUILDING SIGNAGE

LETTERS AND LOGO CHANNELS FABRICATED WITH HEAVY GAUGE METAL RETURNS AND BACKS, PAINTED BLUE & ORANGE. FACES TO BE TRANSLUCENT BLUE & ORANGE ACRYLIC, HELD IN PLACE WITH BLUE & ORANGE TRIMCAP MOLDING. CHANNELS TO BE INTERNALLY ILLUMINATED WITH WHITE LED LIGHTING COMPONENTS, POWERED BY REMOTE LOW VOLTAGE POWER SUPPLIES. SIGNAGE TO BE MOUNTED TO FACE OF BUILDING WITH NON-CORROSIVE FASTENERS.

TO MATCH PMS 2925C  
BLUE

TO MATCH PMS 144C  
ORANGE



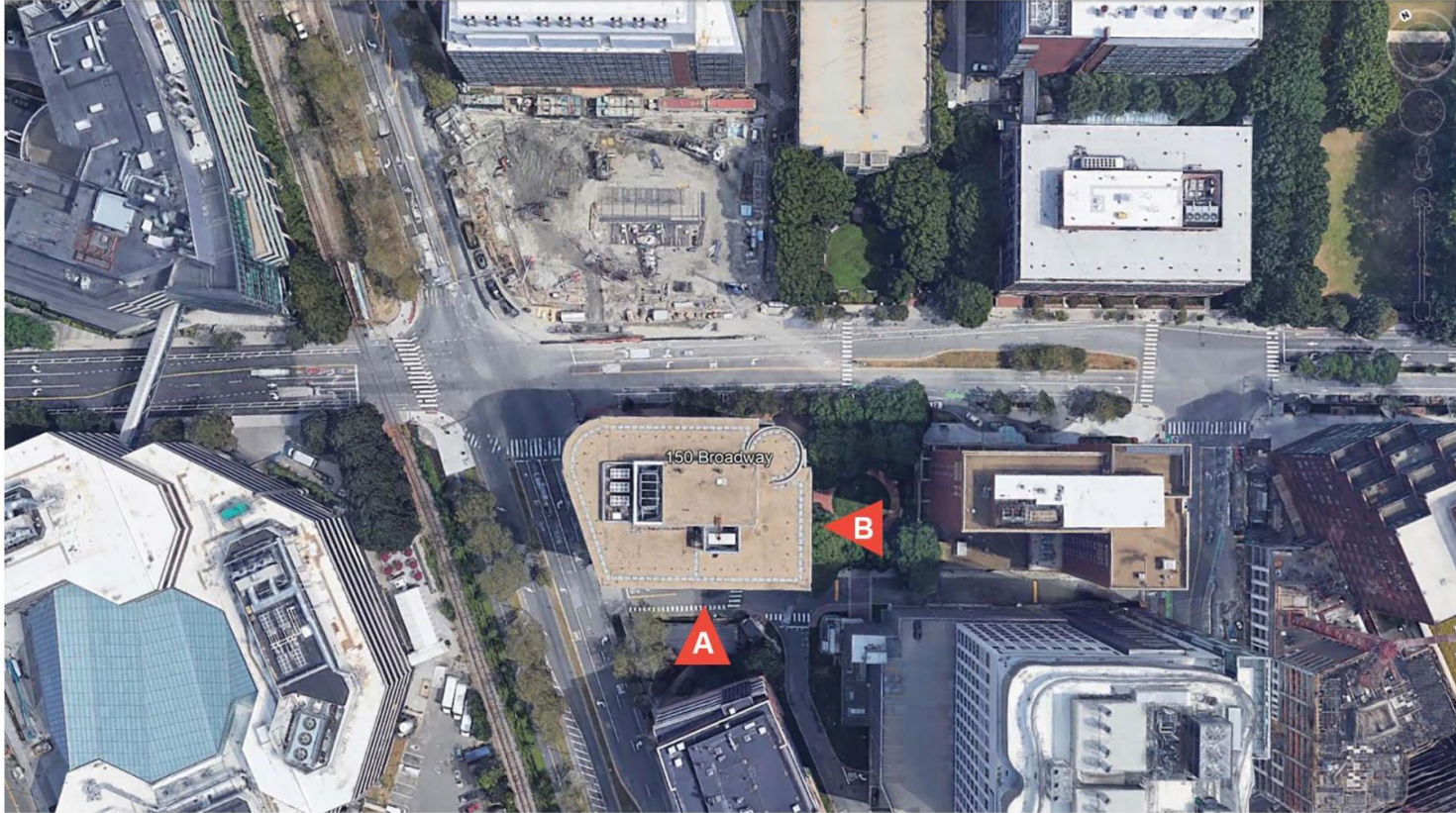
2 SCHEMATIC SECTION  
NTS

8CC EL OCHO - 150 BROADWAY, CAMBRIDGE

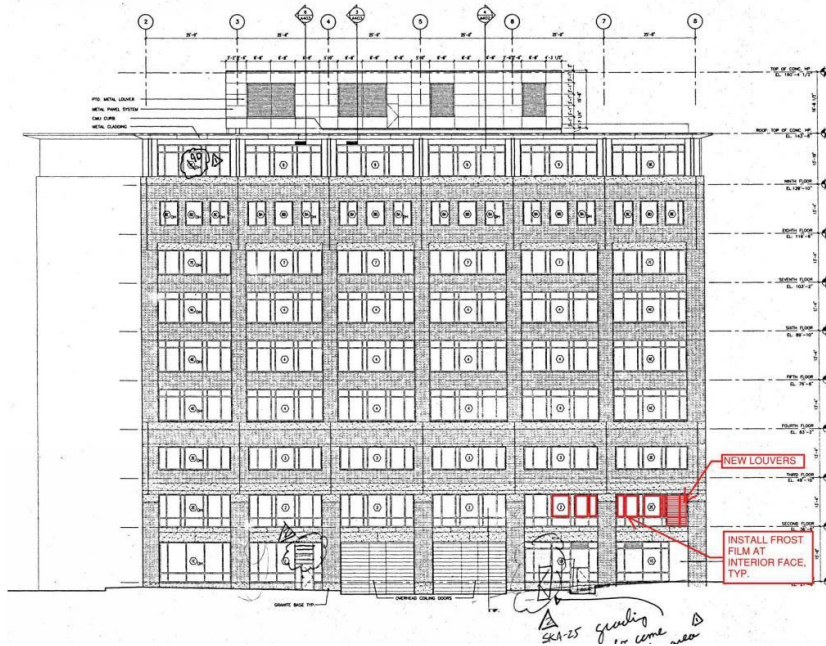
# LOUVERS



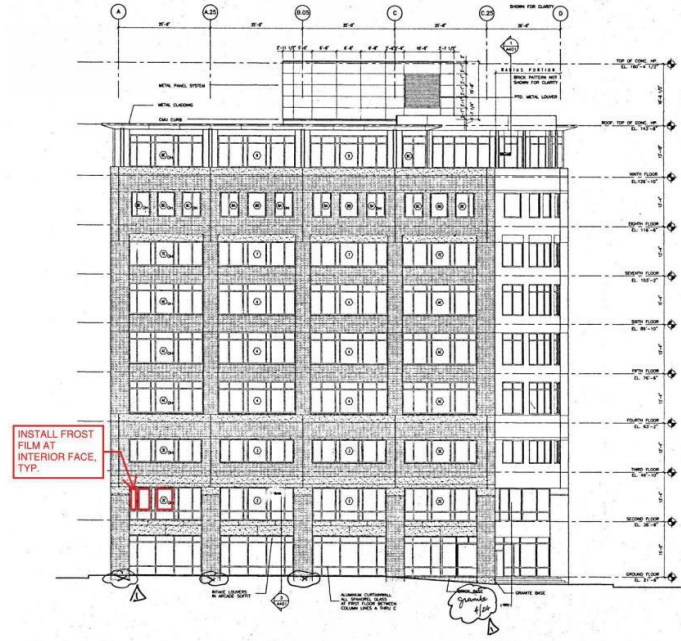
# 8CC - EXTERIOR LOUVERS



# 8CC - EXTERIOR LOUVERS



Elevation A - South Facade



Elevation B - East Facade



# 8CC - EXTERIOR LOUVERS



South Facade - Existing



South Facade - Proposed

## 8CC - EXTERIOR LOUVERS



East Facade - Existing

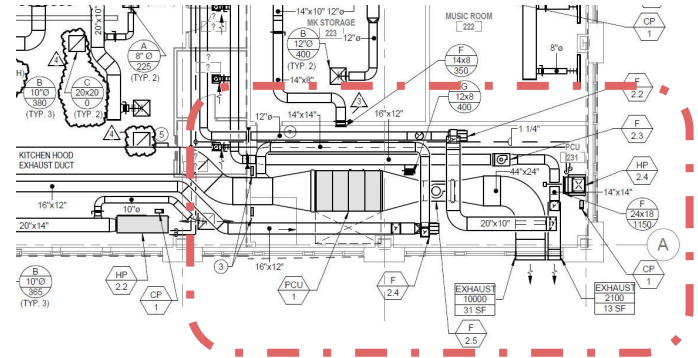
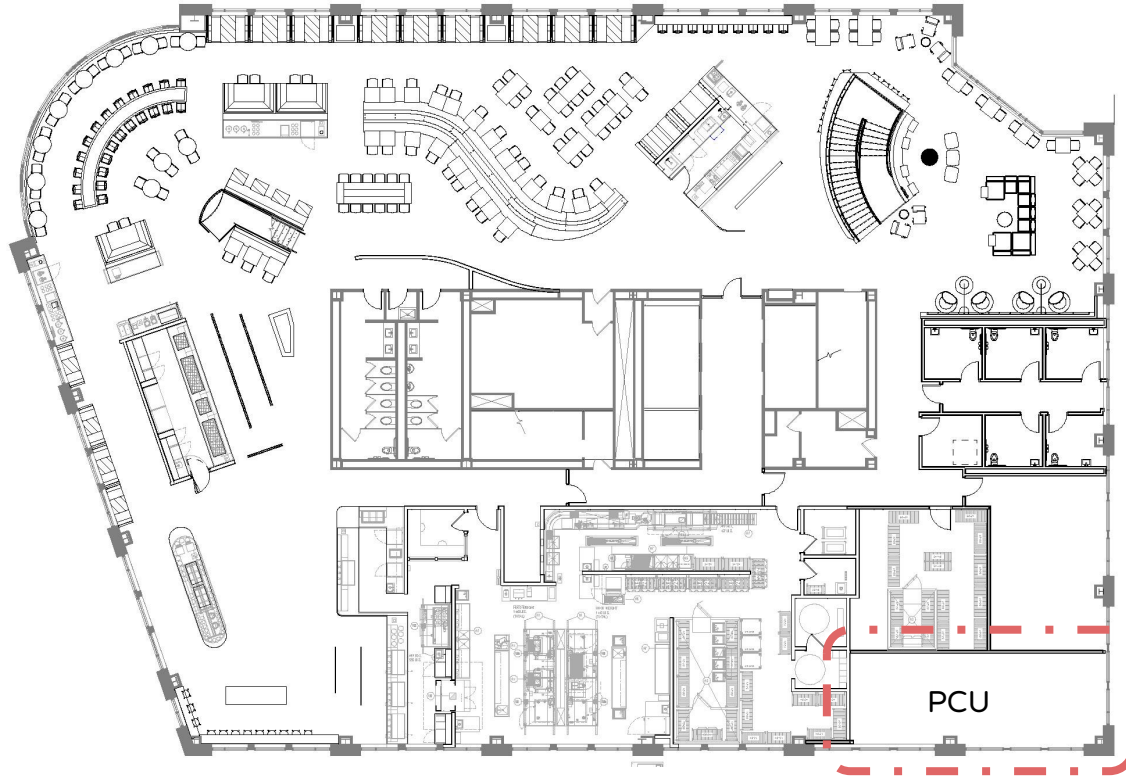


East Facade - Proposed



# 8CC - EXTERIOR LOUVERS

BROADWAY

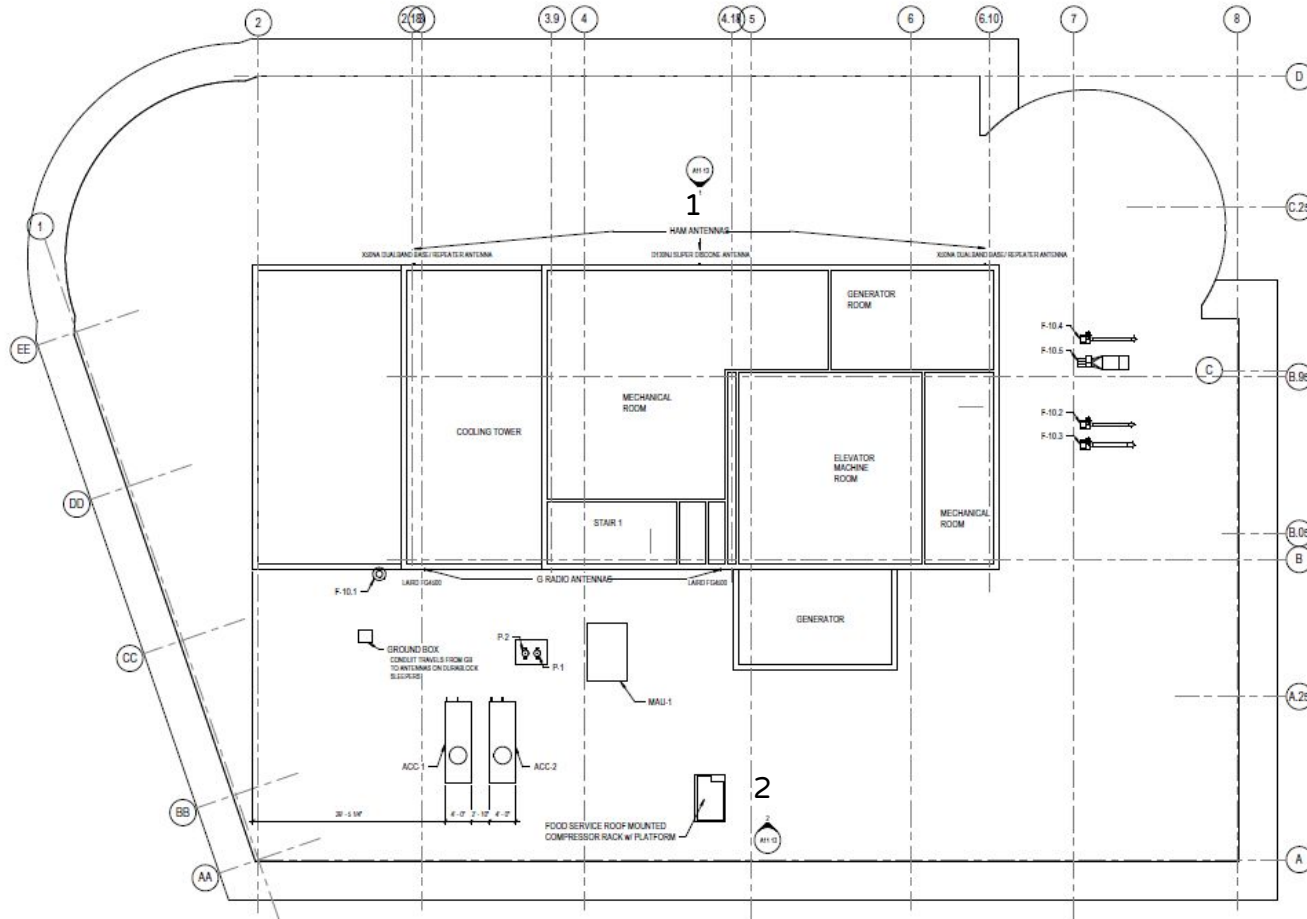


8CC EL OCHO - 150 BROADWAY, CAMBRIDGE

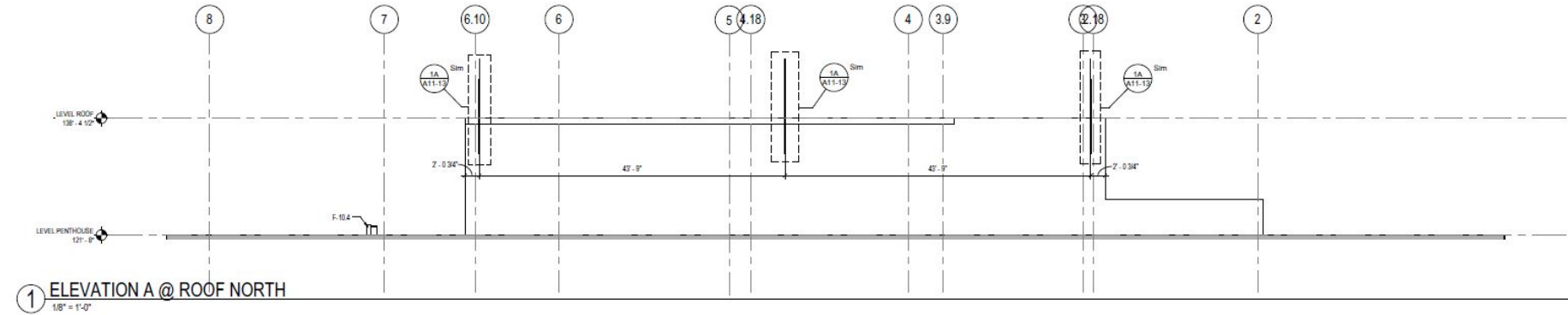
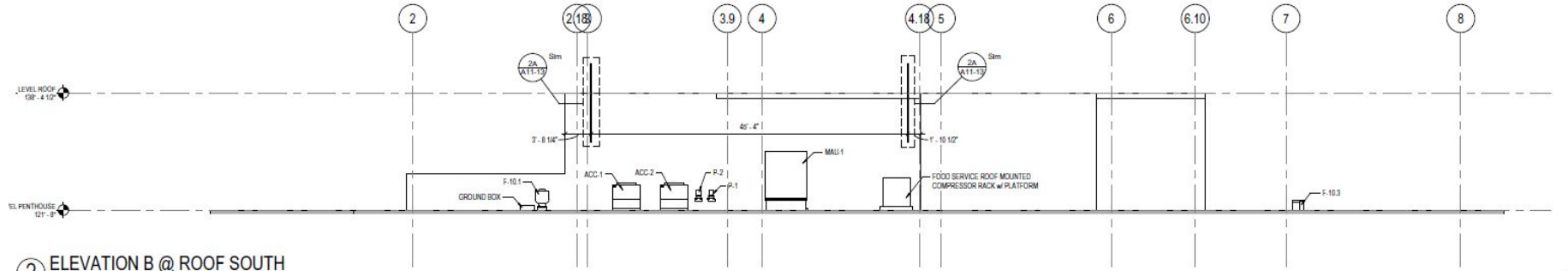
# ROOF

# 8CC - ROOF PLAN

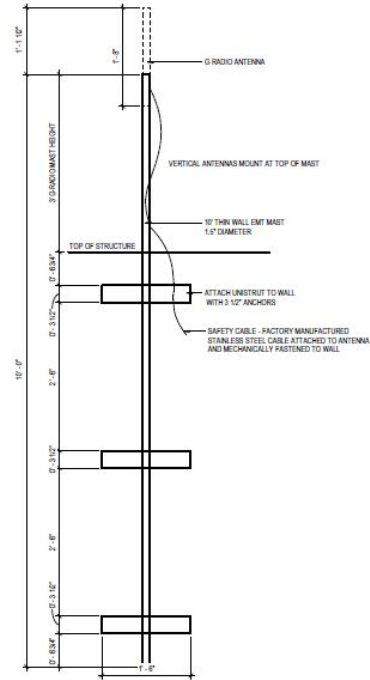
BROADWAY



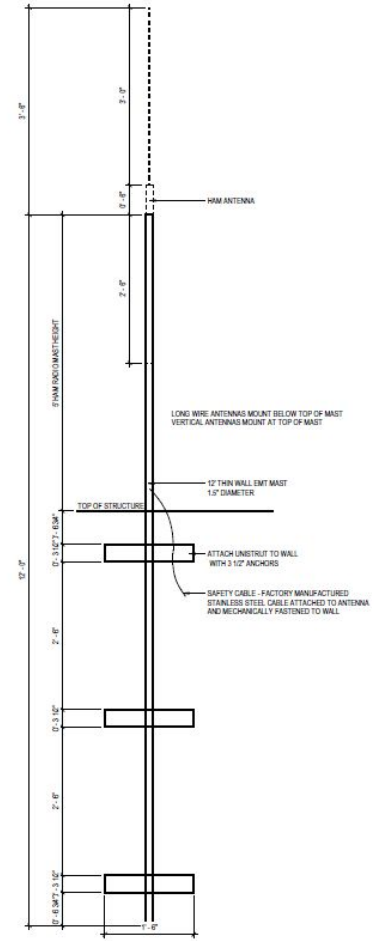
# 8CC - ROOF ELEVATIONS



# 8CC - ANTENNA DETAILS



**2A** G-RADIO MAST  
1" - 1'-0"



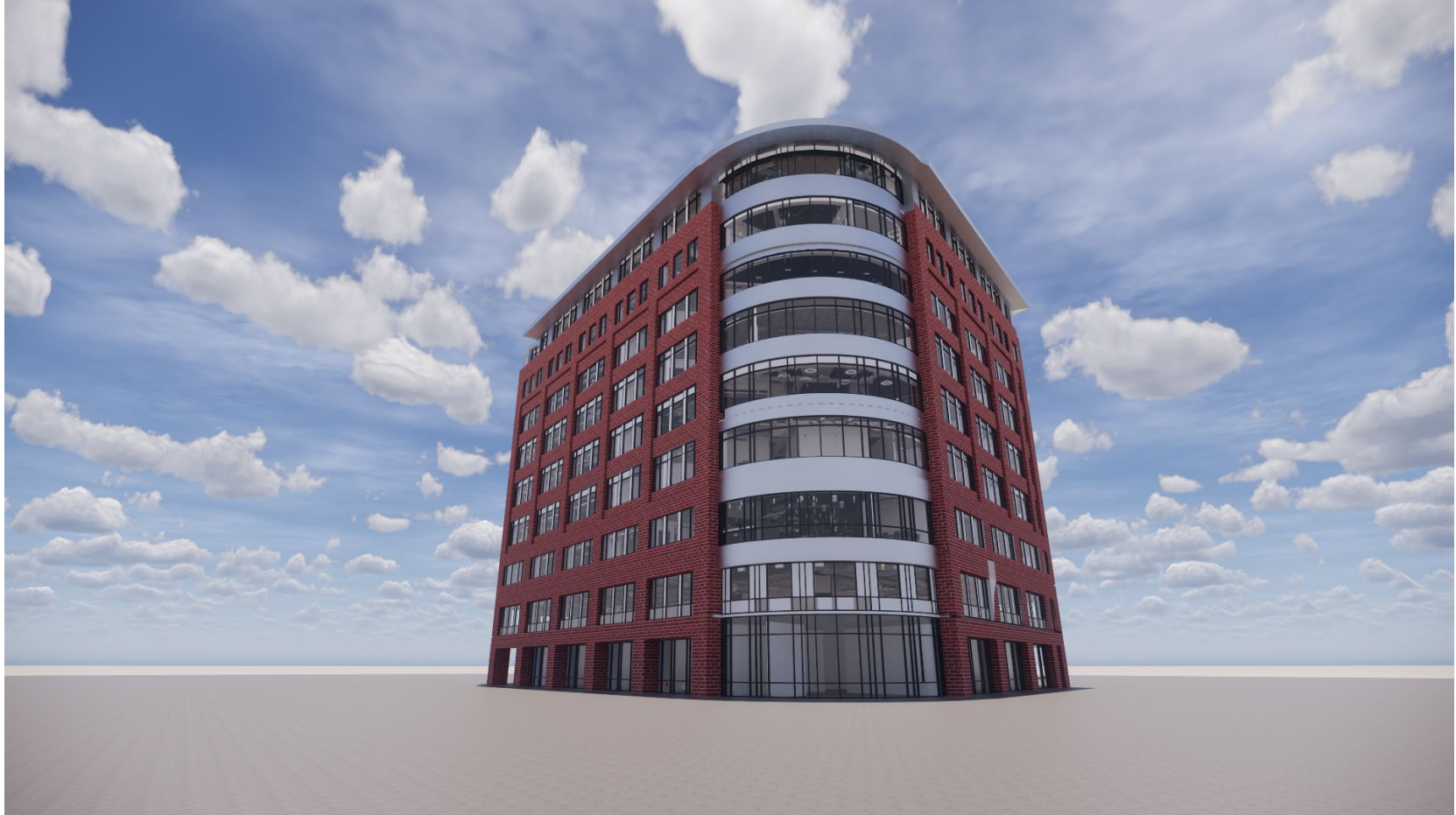
**1A** HAM RADIO MAST  
1" - 1'-0"

8CC - BROADWAY





8CC - BROADWAY & GALILEO



8CC - GALILEO





8CC - SOUTH



8CC - EAST/ PARK

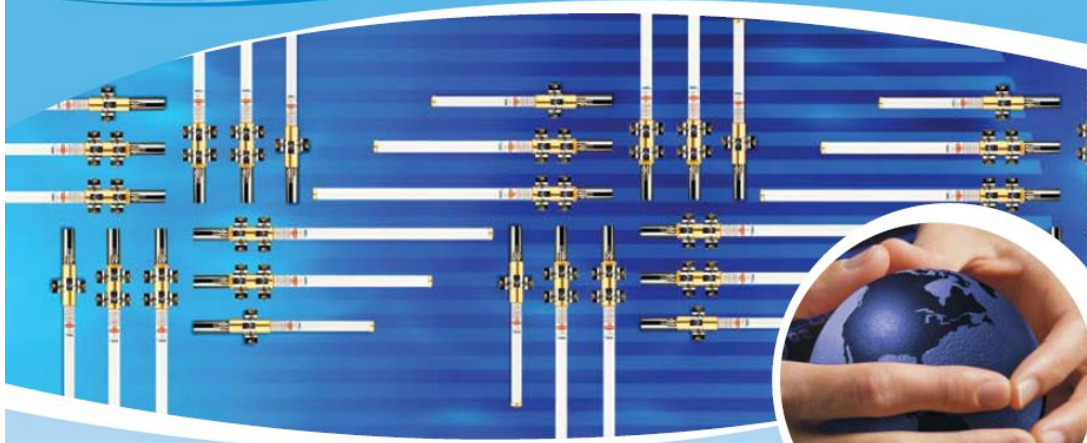




## 8CC - ANTENNA GRADIO (2)

**Laird**  
TECHNOLOGIES®

### FG4500 Fiberglass Omni-directional Antennas



global solutions :  
local support.

**Fiberglass base station antennas  
feature industry leading design  
components that perform in  
extreme conditions**

Laird Technologies' Fiberglass Base Station antennas are collinear designs

#### Features and Benefits:

- Every FG fiberglass base antenna is tested on a network analyzer before shipping to assure the best performance.
- Special UV Treated - Stands up to the sun
- Durable gold anodized sleeve and cap with N Female connector
- Custom tuning available
- FedEx/UPS Shippable

**Laird**  
TECHNOLOGIES®



gRadio Antenna



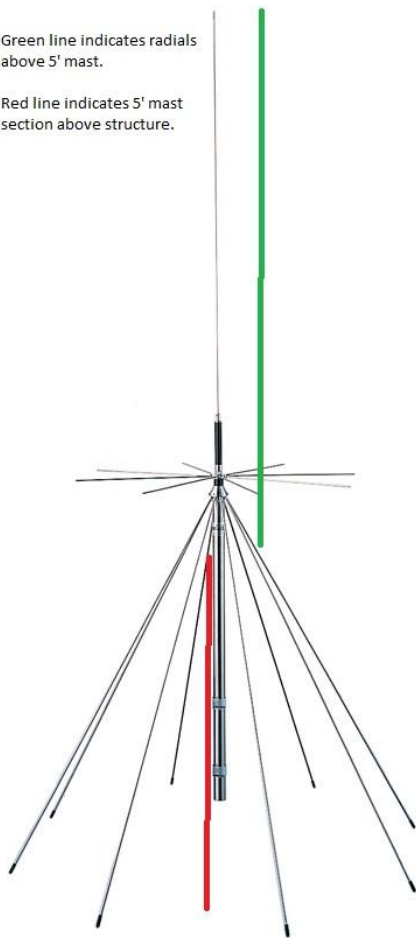
MAST CONNECTION



## 8CC - ANTENNA HAM CENTER (1)

Green line indicates radials above 5' mast.

Red line indicates 5' mast section above structure.



**DIAMOND**  
ANTENNA

A Division of RF Parts Company

[Home](#) • [Products](#) • [Technical Info](#) • [Sample Photos](#) • [Warranty](#) • [Dealers](#) • [Contact](#)

### D130NJ Super Discone Antenna

The D130J Super Discone Antenna is an ultra-wideband antenna covering amateur radio, commercial 2-way, cellular, air traffic control and various utility frequency bands. Rust-free stainless steel is employed in major component parts making the antenna rust resistant and durable.

#### Special Features:

- Ultra-wideband design 25 to 1300 MHz receive, 50-1300 MHz transmit (6m tunable for transmit)
- Compact and lightweight design enables antenna to be installed on balcony railing at an apartment or condominium
- Ideal for 2m, 1-1/4m, 70cm, 33cm and 23cm amateur bands
- Excellent "shop" antenna for testing various transmitters on a single coax
- Can be made further compact and lightweight by removing the top loading coil if 25-50 MHz reception is not required



Click image to enlarge.

#### Specifications:

Bands:	25-1300 MHz
Gain dBi:	2 (nominal)
Max Power Rating:	144 MHz up: 200 watts 6m: 20 watts FM, 50 watts PEP
Height:	5.6'
Connector:	Type-N
Element Phasing:	Wideband Discone

Remarks: Adjustable 50-54 MHz

[More Photos](#)

[Assembly Instructions](#)

[Order Online](#)  
From Online Dealers

Diamond® Antennas are sold through authorized dealers. Contact one of your local [Diamond® Antenna Dealers](#) for current price & availability.

[Home](#) • [Products](#) • [Technical Info](#) • [Sample Photos](#) • [Warranty](#) • [Dealers](#) • [Contact](#)

©2012 RF Parts Company. All rights reserved.

## X50NA Dualband Base/Repeater Antenna

The X50NA and X50A are excellent choices where ruggedness is required in a medium-gain, dual-band application.

### Special Features:

- Fiberglass radomes
- Overlapping outer shells for added strength
- Strong waterproof joint couplings
- Stainless steel hardware
- Wide band performance
- Factory adjusted – no tuning required
- High wind rating
- DC grounded

### Specifications:

Band:	2m/70cm
Gain (dB):	4.5/7.2
Max Power Rating:	200
Wind Rating:	135 MPH (no ice)
Height (feet):	5.6
Connector:	Type-N
Element Phasing:	3-1/4λ, 3-5/8λ

Remarks: Also available with UHF connection.



Click image to  
enlarge.

**Radiation  
Pattern**

**Parts List**

**Order Online**  
From Online Dealers

Diamond® Antennas are sold through authorized dealers.  
Contact one of your local [Diamond® Antenna Dealers](#) for current price & availability.

## 8CC - ANTENNA SAFETY CABLE

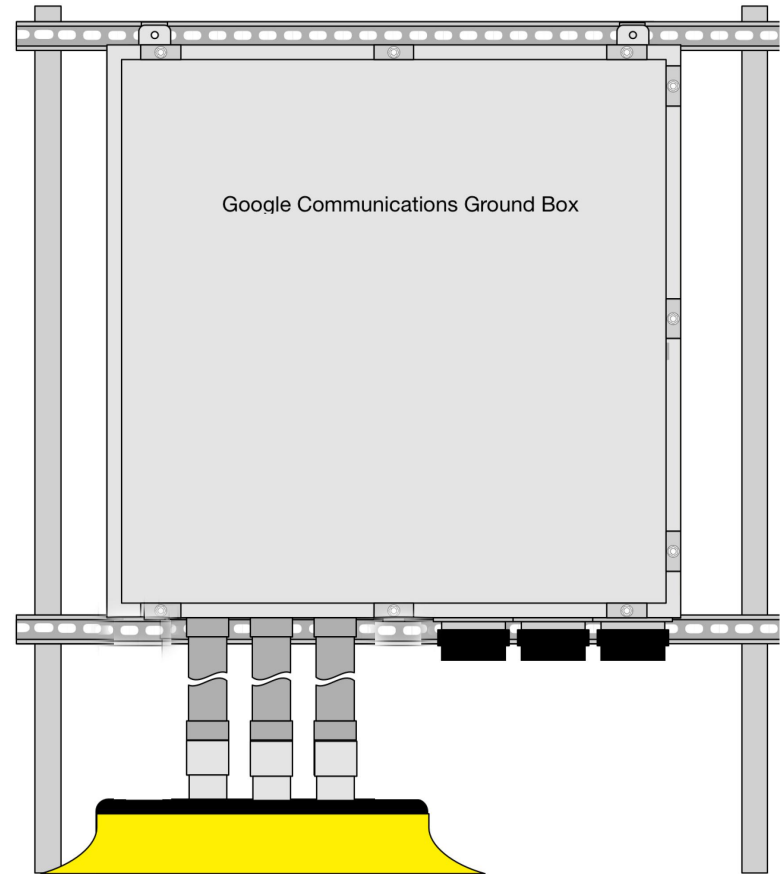


SAMPLE CONNECTION PHOTOS OF SS CABLE

## 8CC - GROUND BOX



Conduit travels on Dura-Blok rooftop supports from Ground Box to Antenna masts



3 - 2" conduit in & 3 - 2" conduit out