

# BYTES AT THE COOP

## **EXTERIOR SIGNAGE SYSTEM**

DESIGN INTENT

1.22.16



**selbert perkins design collaborative**

5 Water Street, Arlington MA 02476

T 781.574.6605 | [www.selbertperkins.com](http://www.selbertperkins.com)

01

# Project Info

# BYTES AT THE COOP

Project Colors



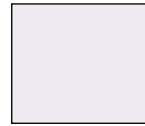
**P1**  
MP33653  
Black Stallion



**V1**  
3M 3630-22  
Black



**V2**  
A8001-0  
White



**V3**  
A5861-S  
Etchmark



**selbert perkins design  
collaborative inc.**

5 Water Street, Arlington MA 02476  
T 781.574.6605 | F 781.574.6606

Selbert Perkins Design Collaborative, Inc. © 2016

No portion of this drawing may be reproduced without written consent of Selbert Perkins Design Collaborative, Inc.

The design elements represented on this sheet and related sheets are for design intent only. Selbert Perkins Design Collaborative does not represent that the design of the elements on the sheets are able to be fabricated entirely as shown. Contractor/fabricator to review documents for contractibility, structural and performance soundness. Contractor/fabricator to notify Selbert Perkins Design Collaborative in the event of concern or disagreement with the contractibility and design intent of the elements as depicted on the sheets.

**client:**



**project:**

Bytes at the Coop  
Exterior Signage System

**date:**

22 January 2016

**revisions:**

| rev | descrip | by | date |
|-----|---------|----|------|
| △   |         |    |      |
| △   |         |    |      |
| △   |         |    |      |
| △   |         |    |      |
| △   |         |    |      |
| △   |         |    |      |

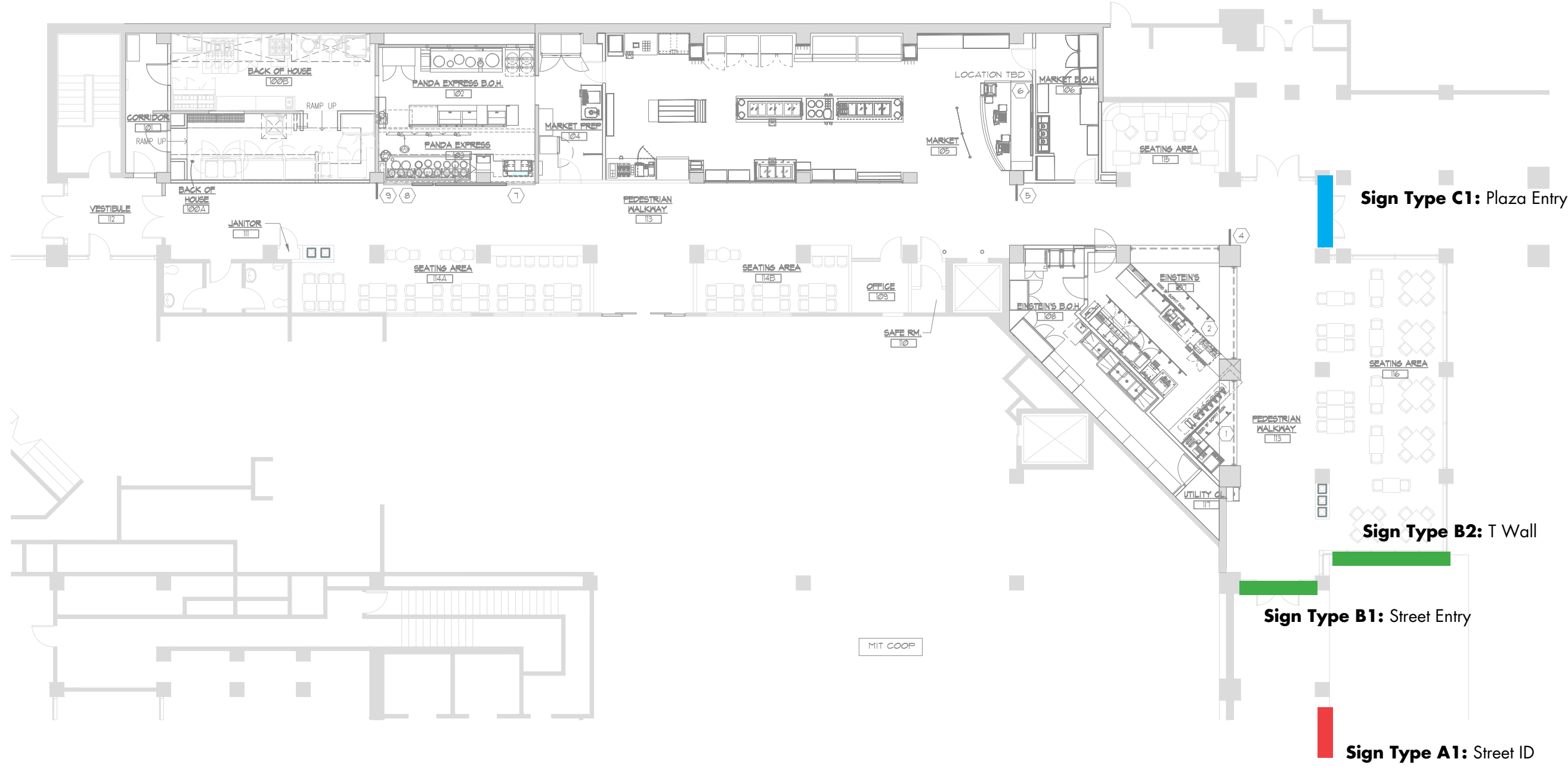
**title:**

Project Standards

**sheet:**

# 02 **Sign Location Plan**

\*Fabricator to conduct site survey to verify site conditions and other details prior to shop drawing creation



selbert perkins design collaborative inc.

5 Water Street, Arlington MA 02476  
T 781.574.6605 | F 781.574.6606

Selbert Perkins Design Collaborative, Inc. © 2016

No portion of this drawing may be reproduced without written consent of Selbert Perkins Design Collaborative, Inc.

The design elements represented on this sheet and related sheets are for design intent only. Selbert Perkins Design Collaborative does not represent that the design of the elements on the sheets are able to be fabricated entirely as shown. Contractor/fabricator to review documents for contractibility, structural and performance soundness. Contractor/fabricator to notify Selbert Perkins Design Collaborative in the event of concern or disagreement with the contractibility and design intent of the elements as depicted on the sheets.

client:



project:

Bytes at the Coop  
Exterior Signage System

date:

22 January 2016

revisions:

|     |         |    |      |
|-----|---------|----|------|
| △   |         |    |      |
| △   |         |    |      |
| △   |         |    |      |
| △   |         |    |      |
| △   |         |    |      |
| △   |         |    |      |
| rev | descrip | by | date |

title:

Sign Location Plan

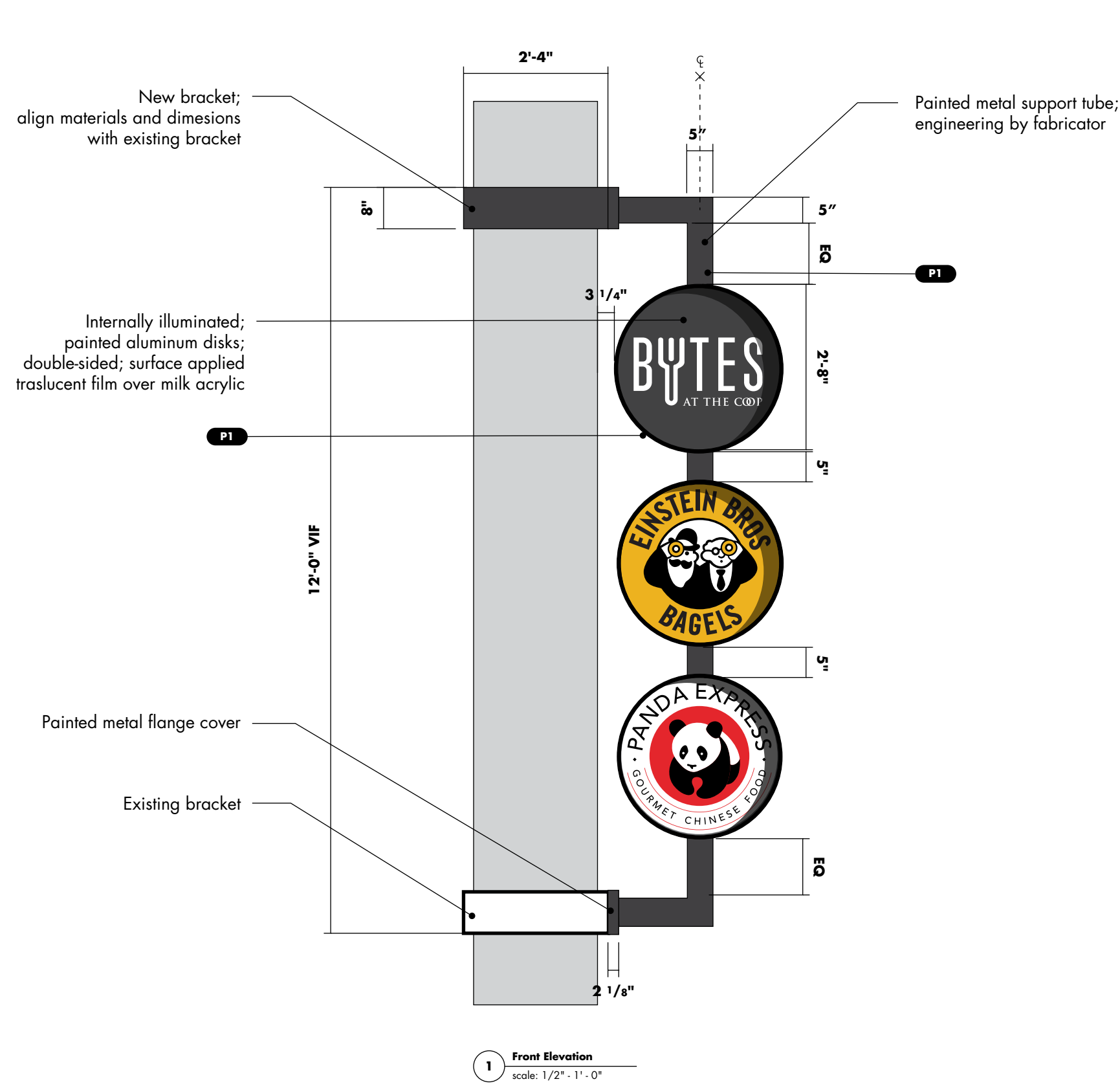
sheet:

5

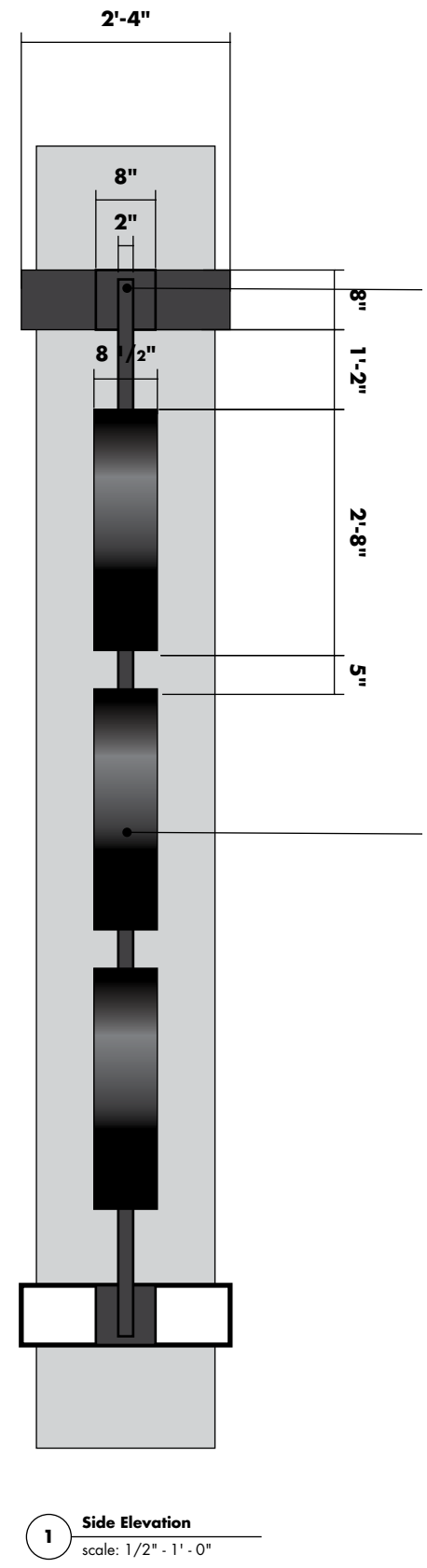
03

## **Exterior Signage**

\*Fabricator to conduct site survey to verify site conditions and other details prior to shop drawing creation



1 Front Elevation  
scale: 1/2" - 1' - 0"



1 Side Elevation  
scale: 1/2" - 1' - 0"



selbert perkins design collaborative inc.

5 Water Street, Arlington MA 02476  
T 781.574.6605 | F 781.574.6606

Selbert Perkins Design Collaborative, Inc. © 2016

No portion of this drawing may be reproduced without written consent of Selbert Perkins Design Collaborative, Inc.

The design elements represented on this sheet and related sheets are for design intent only. Selbert Perkins Design Collaborative does not represent that the design of the elements on the sheets are able to be fabricated entirely as shown. Contractor/fabricator to review documents for contractibility, structural and performance soundness. Contractor/fabricator to notify Selbert Perkins Design Collaborative in the event of concern or disagreement with the contractibility and design intent of the elements as depicted on the sheets.

client:



project:

Bytes at the Coop  
Exterior Signage System

date:

22 January 2016

revisions:

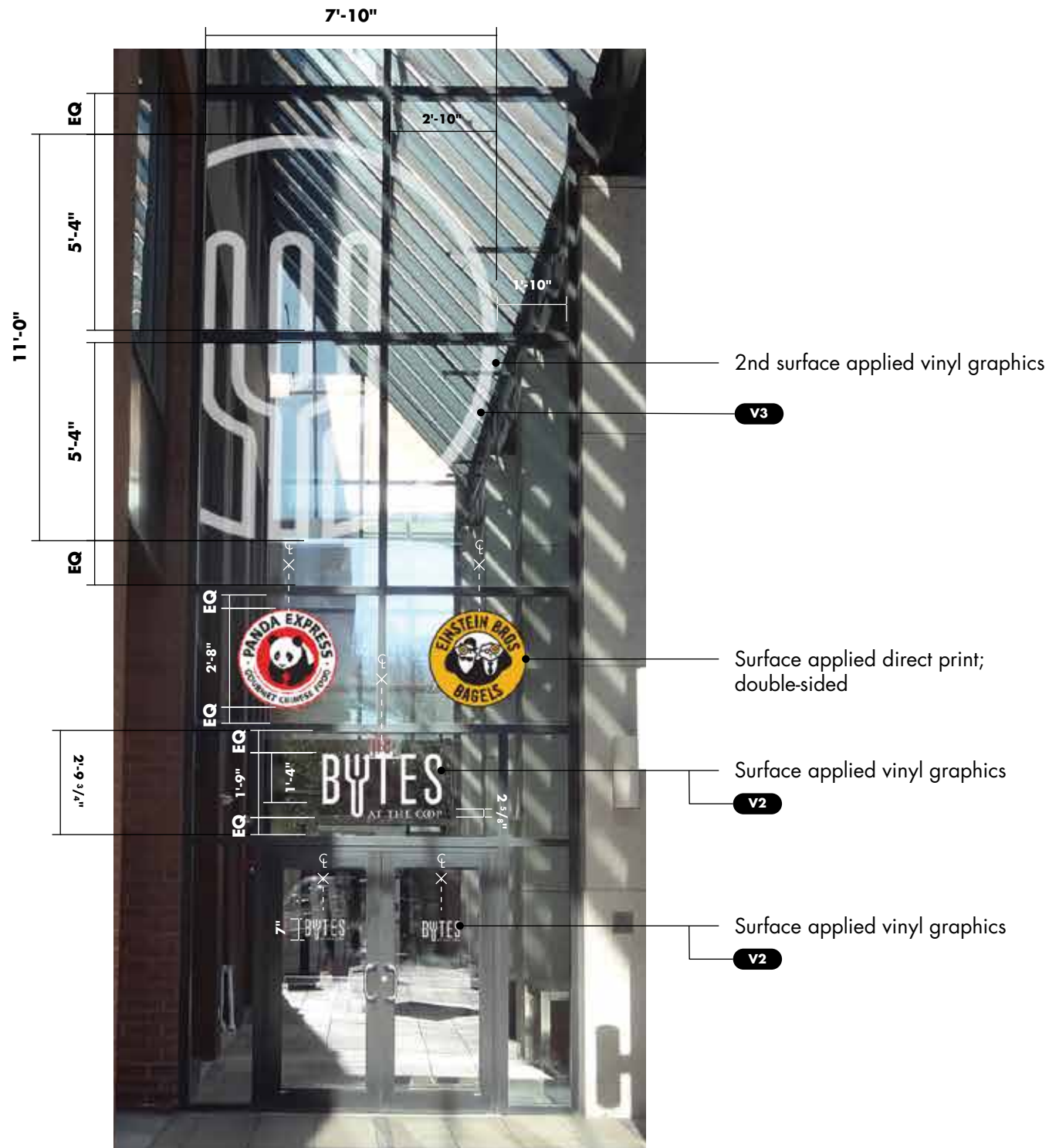
|     |         |       |       |
|-----|---------|-------|-------|
| △   | _____   | _____ | _____ |
| △   | _____   | _____ | _____ |
| △   | _____   | _____ | _____ |
| △   | _____   | _____ | _____ |
| △   | _____   | _____ | _____ |
| rev | descrip | by    | date  |

title:

A1  
Street ID

sheet:

\*Fabricator to conduct site survey to verify site conditions and other details prior to shop drawing creation



**1** Elevation  
no scale



**selbert perkins design collaborative inc.**

5 Water Street, Arlington MA 02476  
T 781.574.6605 | F 781.574.6606

Selbert Perkins Design Collaborative, Inc. © 2016

No portion of this drawing may be reproduced without written consent of Selbert Perkins Design Collaborative, Inc.

The design elements represented on this sheet and related sheets are for design intent only. Selbert Perkins Design Collaborative does not represent that the design of the elements on the sheets are able to be fabricated entirely as shown. Contractor/fabricator to review documents for contractibility, structural and performance soundness. Contractor/fabricator to notify Selbert Perkins Design Collaborative in the event of concern or disagreement with the contractibility and design intent of the elements as depicted on the sheets.

**client:**



**project:**

Bytes at the Coop  
Exterior Signage System

**date:**

22 January 2016

**revisions:**

|     |         |       |       |
|-----|---------|-------|-------|
| △   | _____   | _____ | _____ |
| △   | _____   | _____ | _____ |
| △   | _____   | _____ | _____ |
| △   | _____   | _____ | _____ |
| △   | _____   | _____ | _____ |
| △   | _____   | _____ | _____ |
| rev | descrip | by    | date  |

**title:**

**B1**  
Street Entry

**sheet:**

**8**



\*Fabricator to conduct site survey to verify site conditions and other details prior to shop drawing creation



1 Elevation  
no scale



**selbert perkins design collaborative inc.**

5 Water Street, Arlington MA 02476  
T 781.574.6605 | F 781.574.6606

Selbert Perkins Design Collaborative, Inc. © 2016

No portion of this drawing may be reproduced without written consent of Selbert Perkins Design Collaborative, Inc.

The design elements represented on this sheet and related sheets are for design intent only. Selbert Perkins Design Collaborative does not represent that the design of the elements on the sheets are able to be fabricated entirely as shown. Contractor/fabricator to review documents for contractibility, structural and performance soundness. Contractor/fabricator to notify Selbert Perkins Design Collaborative in the event of concern or disagreement with the contractibility and design intent of the elements as depicted on the sheets.

**client:**



**project:**

Bytes at the Coop  
Exterior Signage System

**date:**

22 January 2016

**revisions:**

|     |         |       |       |
|-----|---------|-------|-------|
| △   | _____   | _____ | _____ |
| △   | _____   | _____ | _____ |
| △   | _____   | _____ | _____ |
| △   | _____   | _____ | _____ |
| △   | _____   | _____ | _____ |
| △   | _____   | _____ | _____ |
| rev | descrip | by    | date  |

**title:**

**B2**  
T Wall

**sheet:**

**9**

\*Fabricator to conduct site survey to verify site conditions and other details prior to shop drawing creation



Internally illuminated;  
painted aluminum disks;  
double-sided; surface applied  
translucent film over milk acrylic

P1

Surface applied direct print;  
double-sided

1 Elevation  
no scale



selbert perkins design  
collaborative inc.

5 Water Street, Arlington MA 02476  
T 781.574.6605 | F 781.574.6606

Selbert Perkins Design Collaborative, Inc. © 2016

No portion of this drawing may be reproduced without written consent of Selbert Perkins Design Collaborative, Inc.

The design elements represented on this sheet and related sheets are for design intent only. Selbert Perkins Design Collaborative does not represent that the design of the elements on the sheets are able to be fabricated entirely as shown. Contractor/fabricator to review documents for contractibility, structural and performance soundness. Contractor/fabricator to notify Selbert Perkins Design Collaborative in the event of concern or disagreement with the contractibility and design intent of the elements as depicted on the sheets.

client:



project:

Bytes at the Coop  
Exterior Signage System

date:

22 January 2016

revisions:

|     |         |       |       |
|-----|---------|-------|-------|
| △   | _____   | _____ | _____ |
| △   | _____   | _____ | _____ |
| △   | _____   | _____ | _____ |
| △   | _____   | _____ | _____ |
| △   | _____   | _____ | _____ |
| △   | _____   | _____ | _____ |
| rev | descrip | by    | date  |

title:

C1  
Plaza Entry

sheet:

10

