

THE FOUNDRY

A CROSSROADS FOR FORGING
NEW STEAM OPPORTUNITIES

Presentation to the
Cambridge Redevelopment Authority &
Community Members
April 25, 2018





Let's prototype a new approach to civic engagement and community building

180

FOUNDRY WORKS

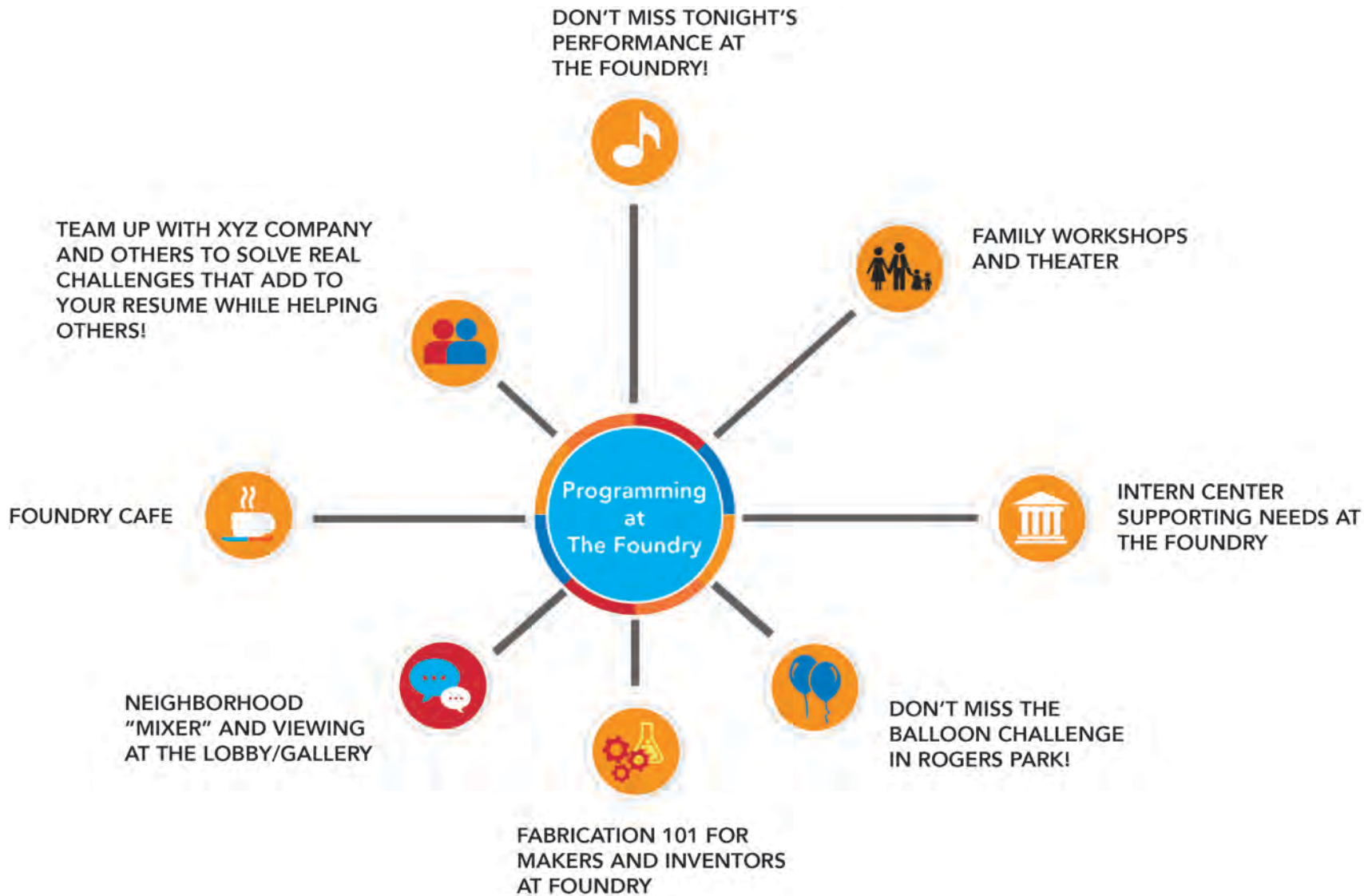
FOUNDRY WORKS BUILDING
PARKING



Under this roof, let's forge new partnerships and create lively, hands-on community experiences for all







The Foundry Consortium

- Formation of new non-profit as soon as possible and more participants
- Interim Foundry Consortium Members – a coalition of the willing
- Lemelson-MIT Program as point of contact/lead
- Foundry Consortium 'Core Team' for initial support



Interim Foundry Consortium (19) members)

- **Design Museum Foundation**, Sam Aquillano, Executive Director
- **Lesley University**, Martha McKenna, Creativity Commons
- **Lesley University**, Sue Cusack, STEAM Learning Lab/Maker Spaces
- **The Dance Complex**, Peter DiMuro, Executive Artistic Director,
- **Jean Appolon Expressions**, Jean Appolon, Dan Koff
- **Innovators for Purpose**, Michael Dawson, Co-Founder & CEO
- **East End House**, Michael Delia, President & CEO,
- **J DuBois Consulting Associates**, Jeanne DuBois, Principal
- **CenterPoint and Cambridge Resident**, Stephen Gardiner
- **Olin College of Engineering**, Mark Somerville, Jeff Goldenson
- **Boston APP/Lab**, Ron Mallis, Executive Director,
- **HCC Consulting Associates**, Joan Squeri, Principal
- **Project Zero at Harvard Graduate School of Education**, Daniel Wilson, Director
- **Mass. State Science & Engineering Fair**, Cora Beth Abel, President & CEO
- **Lemelson-MIT Program**, Michael Cima, Betsy Boyle, Leigh Estabrooks, and Stephanie Couch

Interim Foundry Consortium (19) members)

- 5 with arts expertise
- 6 with expertise in STEAM education and inventing
- 3 with expertise in community engagement and community development
- 2 with special expertise in youth development
- 1 with expertise in the needs of seniors
- 1 with expertise in sustainability
- Many with expertise in nonprofit management

Lemelson-MIT Program – Point of Contact

- 23 year old grants initiative celebrates inventors and inspires young people to pursue creative and inventive lives
- Engage local communities and STEM professionals in support of youth and educators
- Engaged in Cambridge
 - camp at Frisoli Youth Center
 - inventor studio at Fletcher Maynard
 - InnoSkate at Lynch Family Skate Park



The Foundry



The Foundry Consortium: Interim Core Team

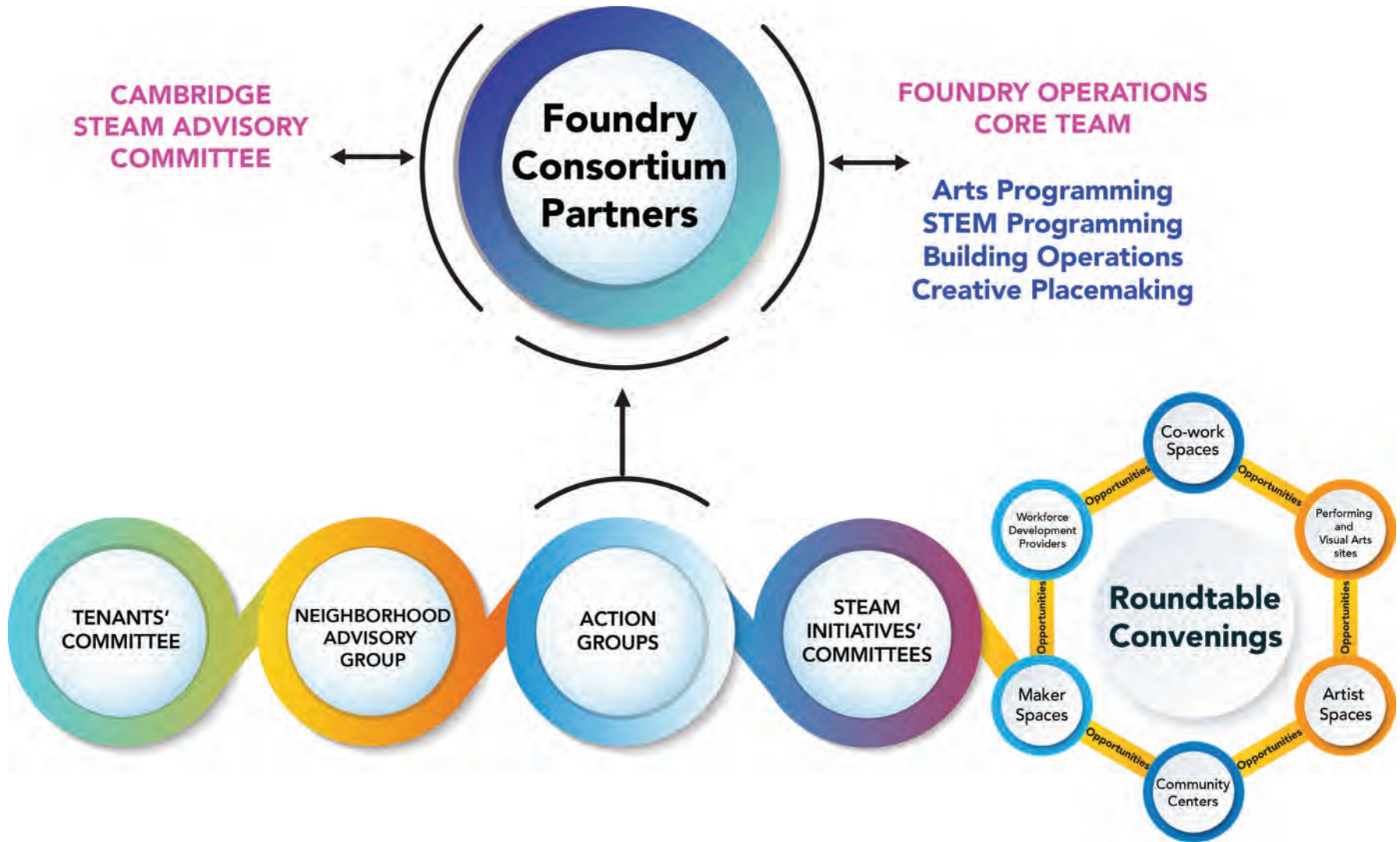
**Martha McKenna and Sue
Cusack, Lesley University**

- *Arts*
- *Maker Education*

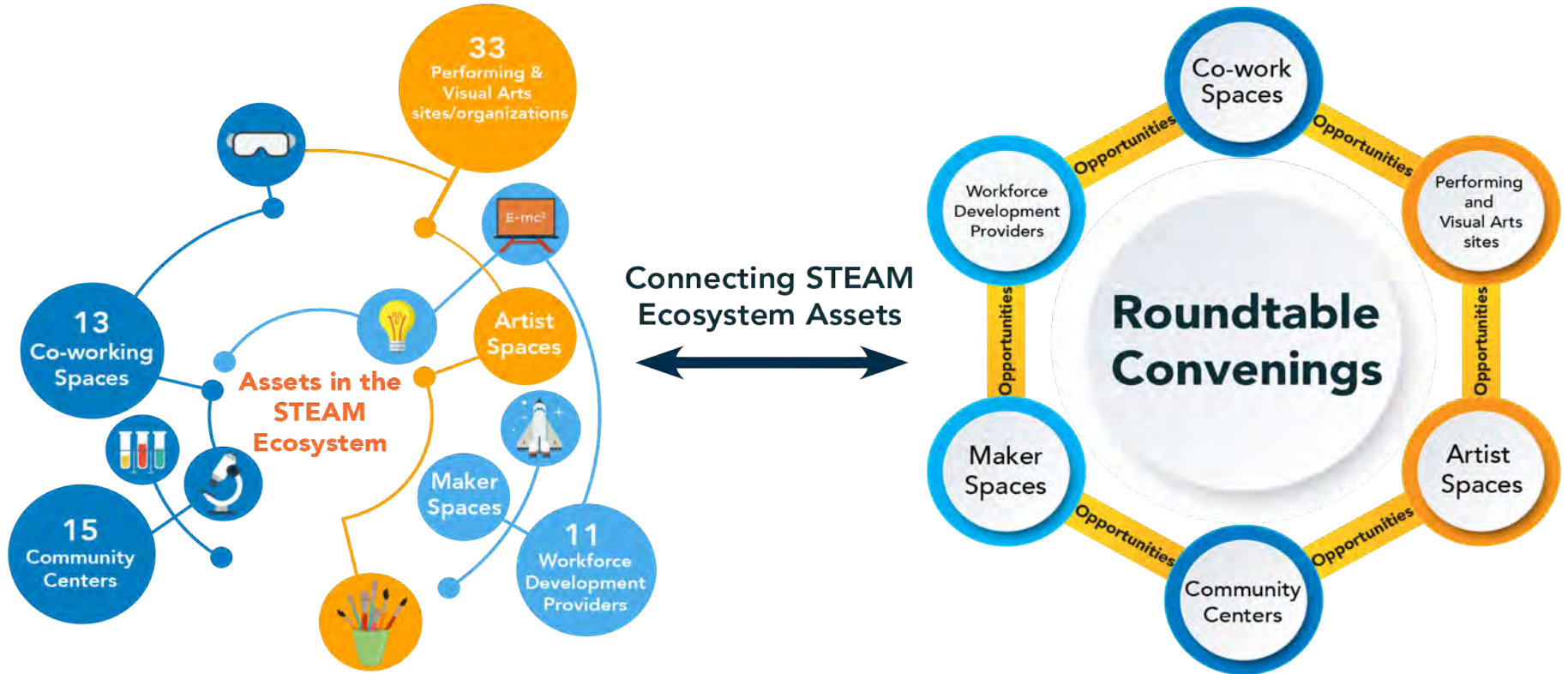
**Stephanie Couch, Betsy Boyle,
Michael Cima, Leigh
Estabrooks, Lemelson-MIT**

- *STEM & Invention Ed*
- *Regional Collaboratives*
- *Nonprofit Management*
- *Start-Up Companies*

Governance



Outreach



Guiding Principles Reflected in the Proposal

- **Community asset** to be in service to the community
- Warm, welcoming and valued as a **neighborhood resource** in East Cambridge and residents across the city
- **Arts and STEM** for residents of **all ages** with an emphasis on **youth and senior engagement**, with a particular emphasis on **under-represented, lower income households**
- Residents' **workforce development** needs must be supported, and will benefit from partnerships with STEAM professionals in the neighboring Kendall Square area
- **Self-sustaining**

Space Use Based on 38,500 est. Sq. Feet

Uses of the building by floor area and key assumptions are shown in Table 12 (pg 42).

- 18% Primarily for the Arts (black box, lobby/gallery, artists studios)
- 18% STEAM Plus (classrooms and community room)
- 8% Maker Space (workshop)
- 3% Culinary Arts (kitchen)
- 53% Office Space (non-profit and for-profit)

- Spaces shared by numerous program providers on a fee-for-service basis with some free use available to the community

- Accessibility is important and must be a priority this for both space and for use of technologies and programming (Ex: UX as a job skill, focus of career development and technical requirement)

Foundry Consortium: New Non-Profit Entity

Staffing for Operations During Years 1-5

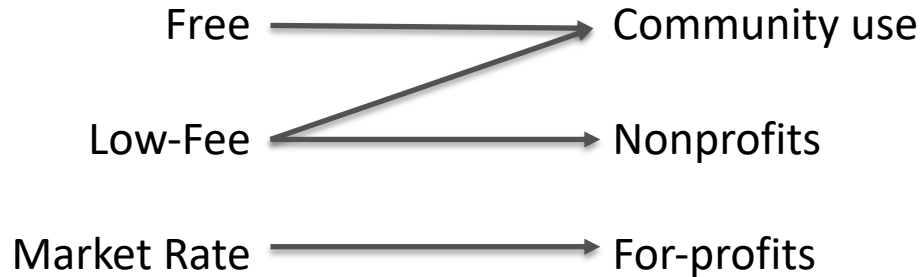
- Foundry Consortium Director
- Foundry Consortium Assoc. Dir.
- Financial Manager
- Event Coordinators
- Administrative Assistant
- Property Manager per RFP

Foundry Consortium Organization

- Steering Committee with key stakeholders.
- Consultation with key entities such as the Foundry Advisory Committee, Cambridge Arts Council, Cambridge Public Schools, City of Cambridge
- Members working in Action Groups
- Neighborhood Committee
- Tenants

Community Access

Sliding Scales for Use of Space:



Nonprofit Organizations offer free/low-fee programming for Community Members

Business Plan Assumes:

10-43% of time allocation*

Community Use of Space

Free Workshop Membership**

Community Youth

* Range of community use varies with different spaces in the building.

** Memberships are for scheduled open use time in the workshop space.

Property Manager via Contract

MANAGEMENT SERVICES:

- Leasing
- Site Manager
- Augmentation of security
- Financial coordination/management
- Human resource management
- Custodial services
- General maintenance
- Contracting for larger maintenance

QUALIFICATIONS:

- Track record of building management
- Reputable as a building operator in Cambridge
- 'Bankable' (financial capacity)
- WBE/MBE

Want to Get Involved?

- Join email list for meeting notices and updates
- Contact us directly with questions or concerns
- Recommend people we should try to engage

Contact us at:

foundry-lemelson@mit.edu



foundry-lemelson@mit.edu