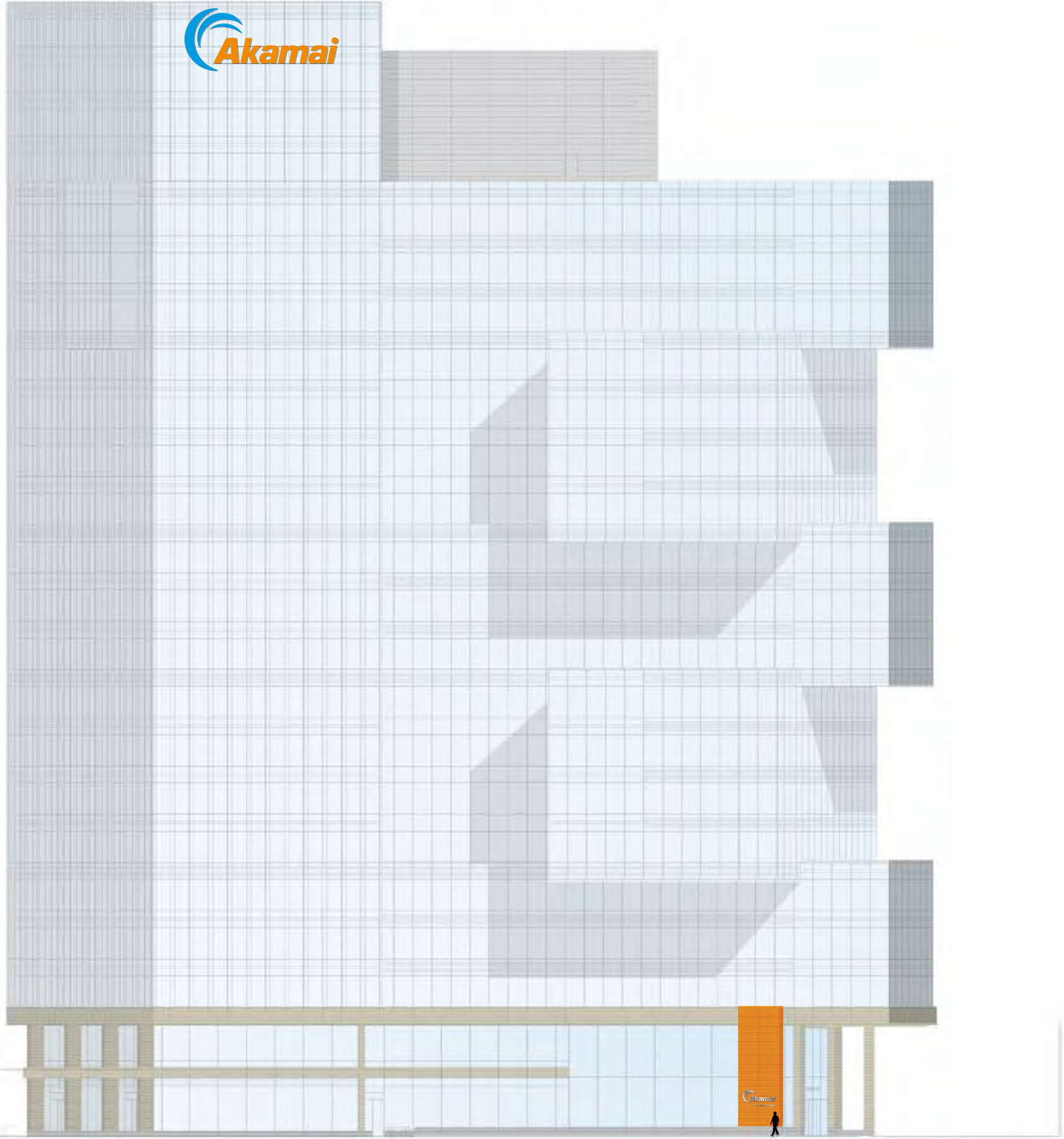


# Akamai Headquarters

**Exterior Signage**

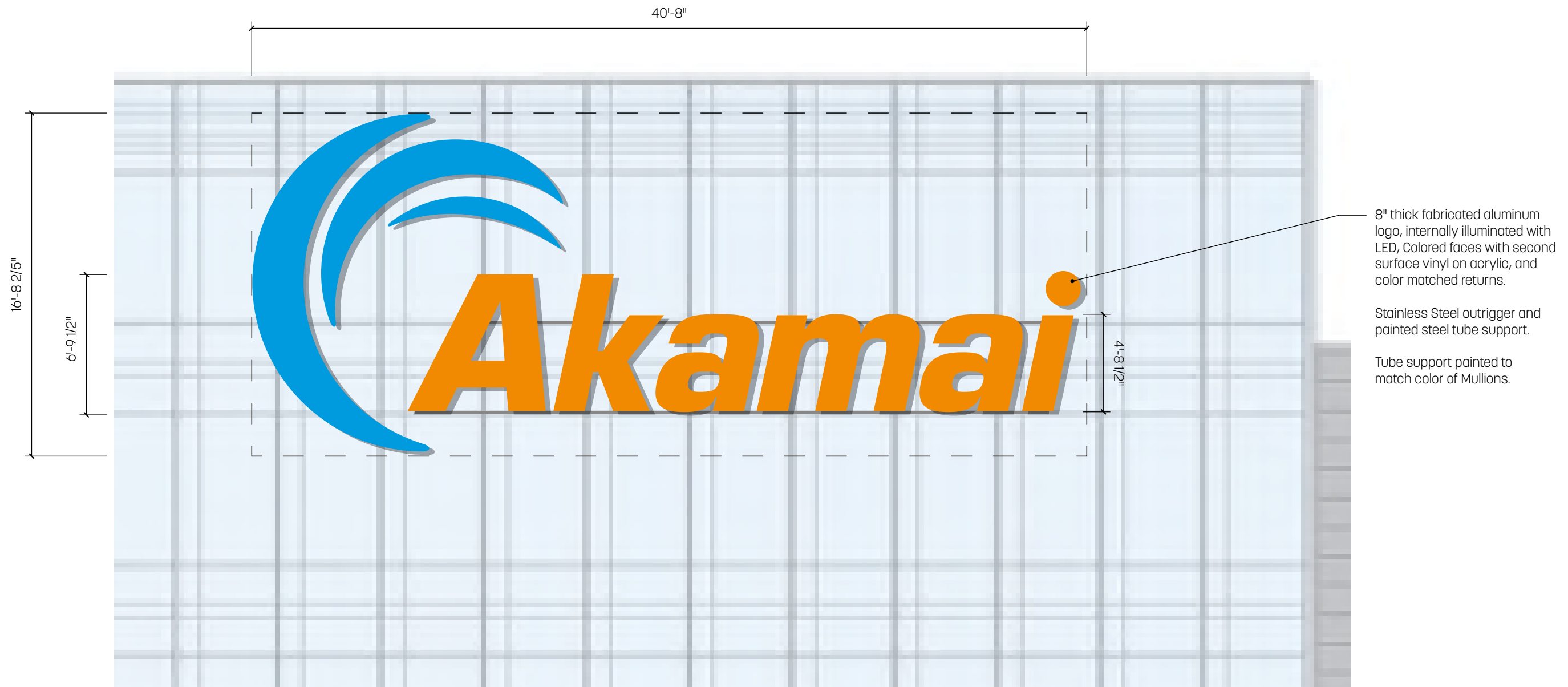


**SIGN TYPE A1**  
Skyline Identification



# SIGN TYPE A1

## Skyline Identification

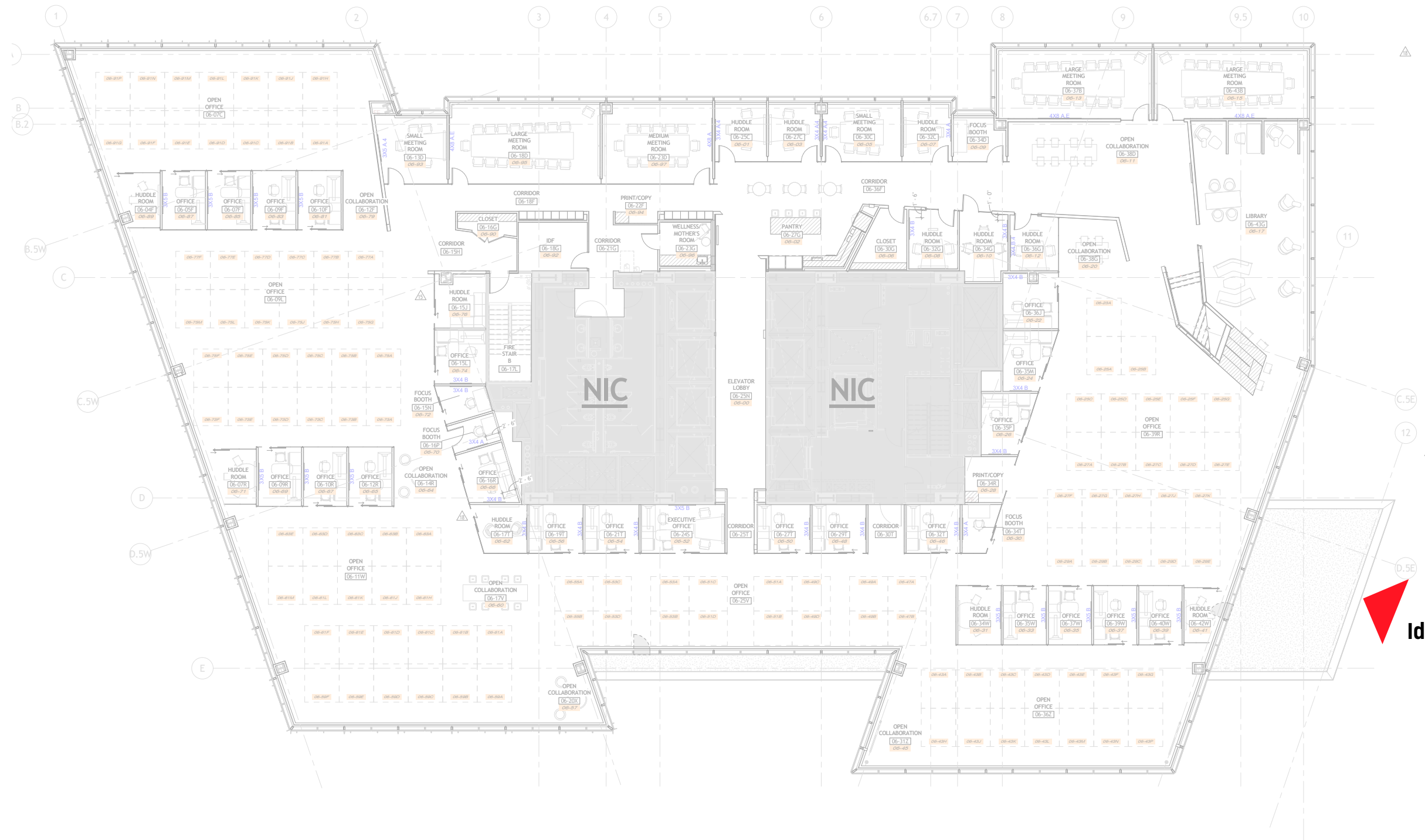


1 Detail (Type A2)  
Scale: 3/16" = 1' - 0"

## SIGN TYPE A1

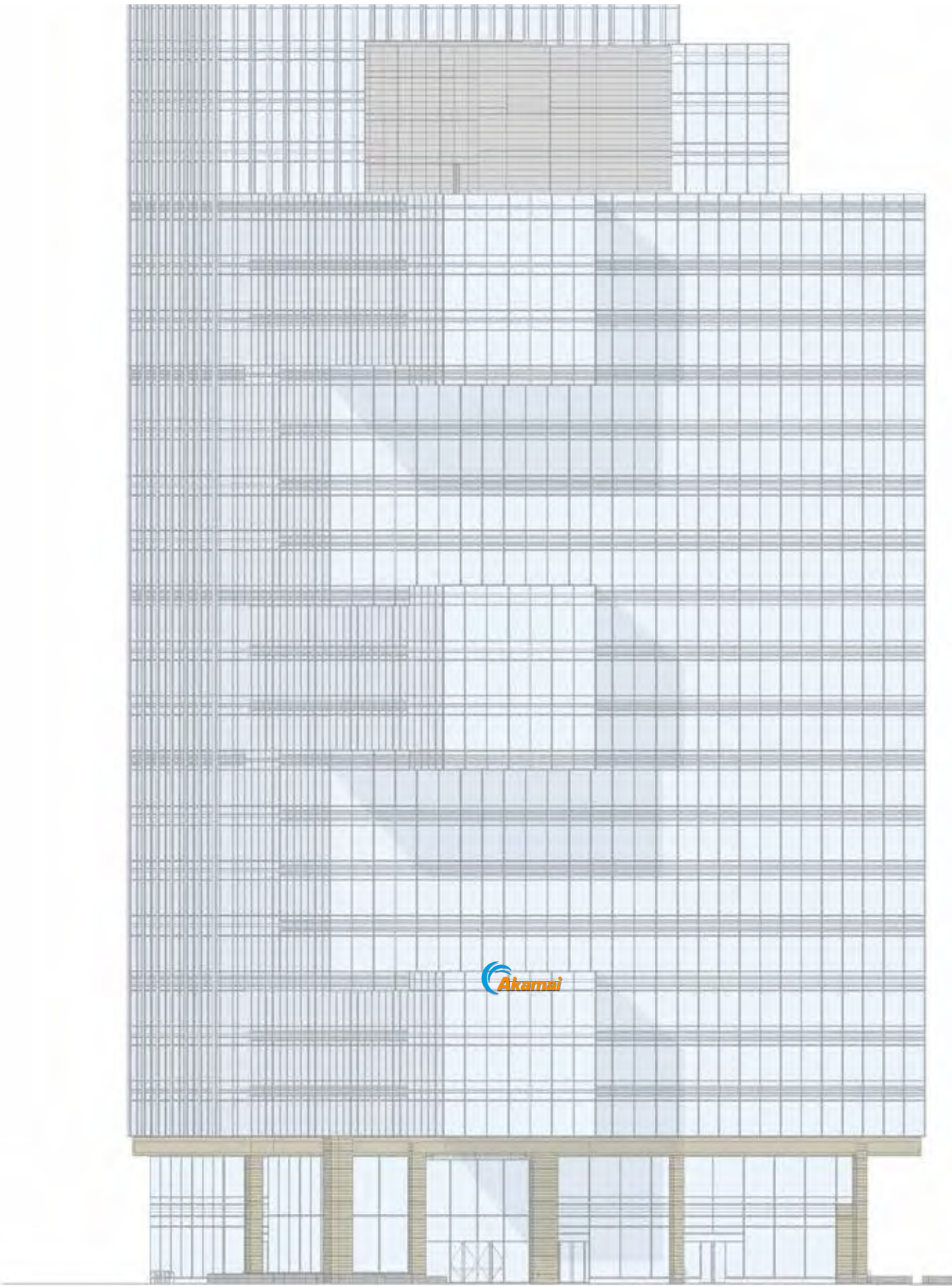
Skyline Identification





**Parapet  
Identification**

**SIGN TYPE B1**  
Parapet Identification





**SIGN TYPE B1**  
Parapet Identification



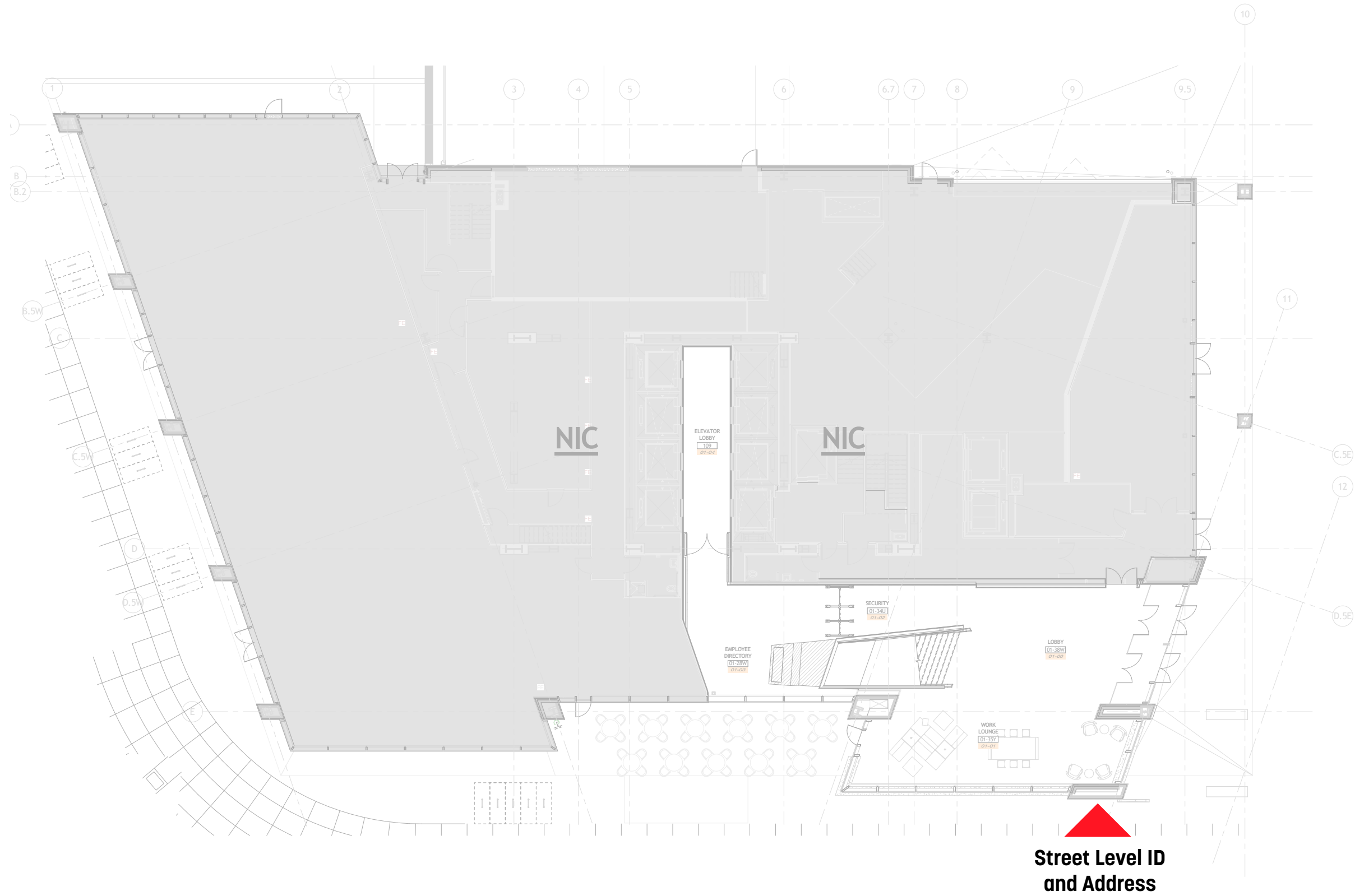
**1** Detail (Type C1)  
Scale: 3/16" = 1' - 0"

**SIGN TYPE B1**  
Parapet Identification



**SIGN TYPE B1**  
Parapet Identification





**SIGN TYPE C**

Street Level Identification



1 1/2" deep fabricated aluminum letters, with #5 brushed satin finish face and returns, halo lit with 6500k white LEDs and 7328 white diffusers. Stand off from terracotta wall 1"

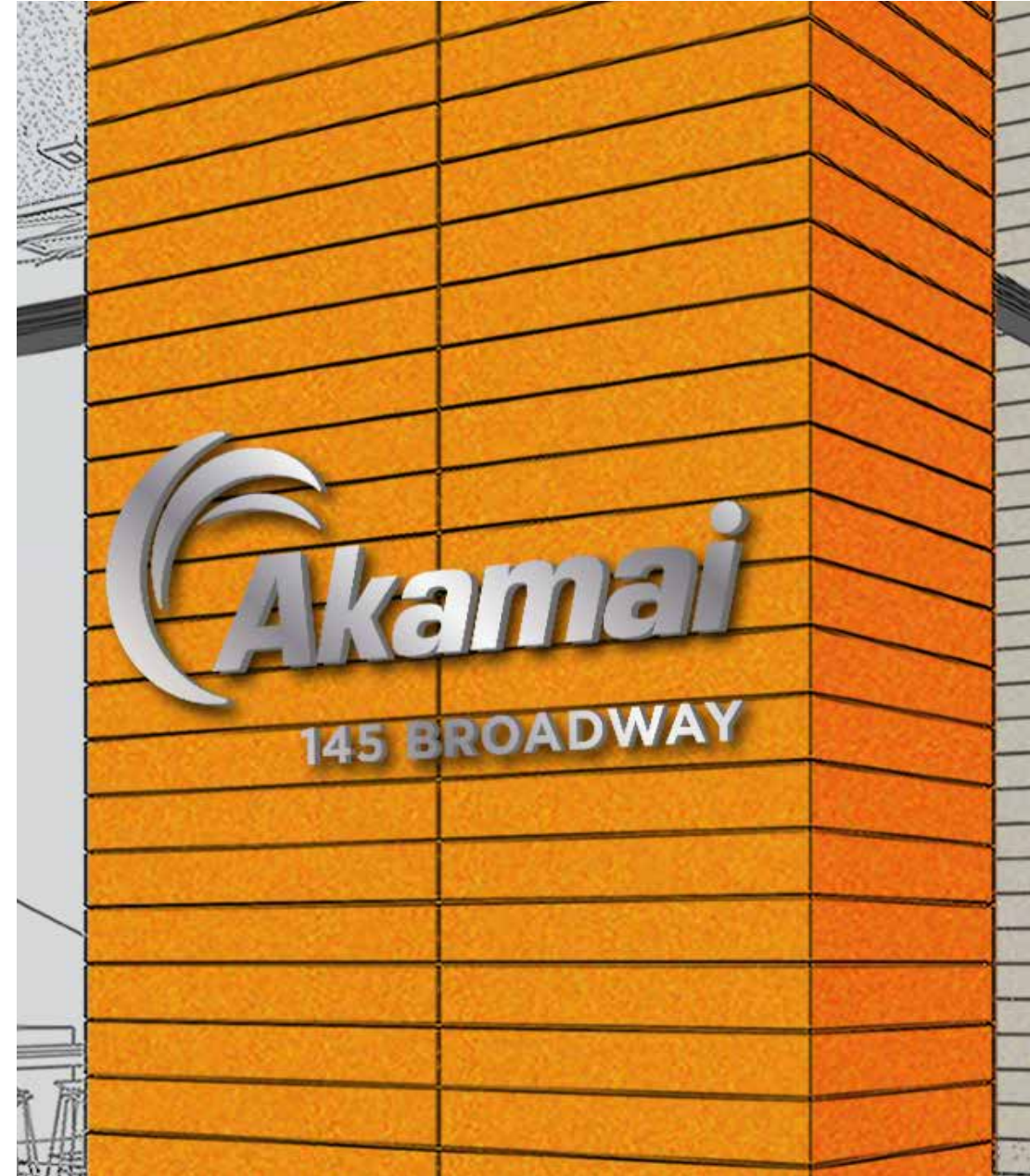
1/2" thick waterjet cut aluminum letters, with #5 brushed satin faces and sandblasted returns. Mounted flush to terracotta tile.

**1** Detail (Type EX.3)  
Scale: 3/16" = 1' - 0"

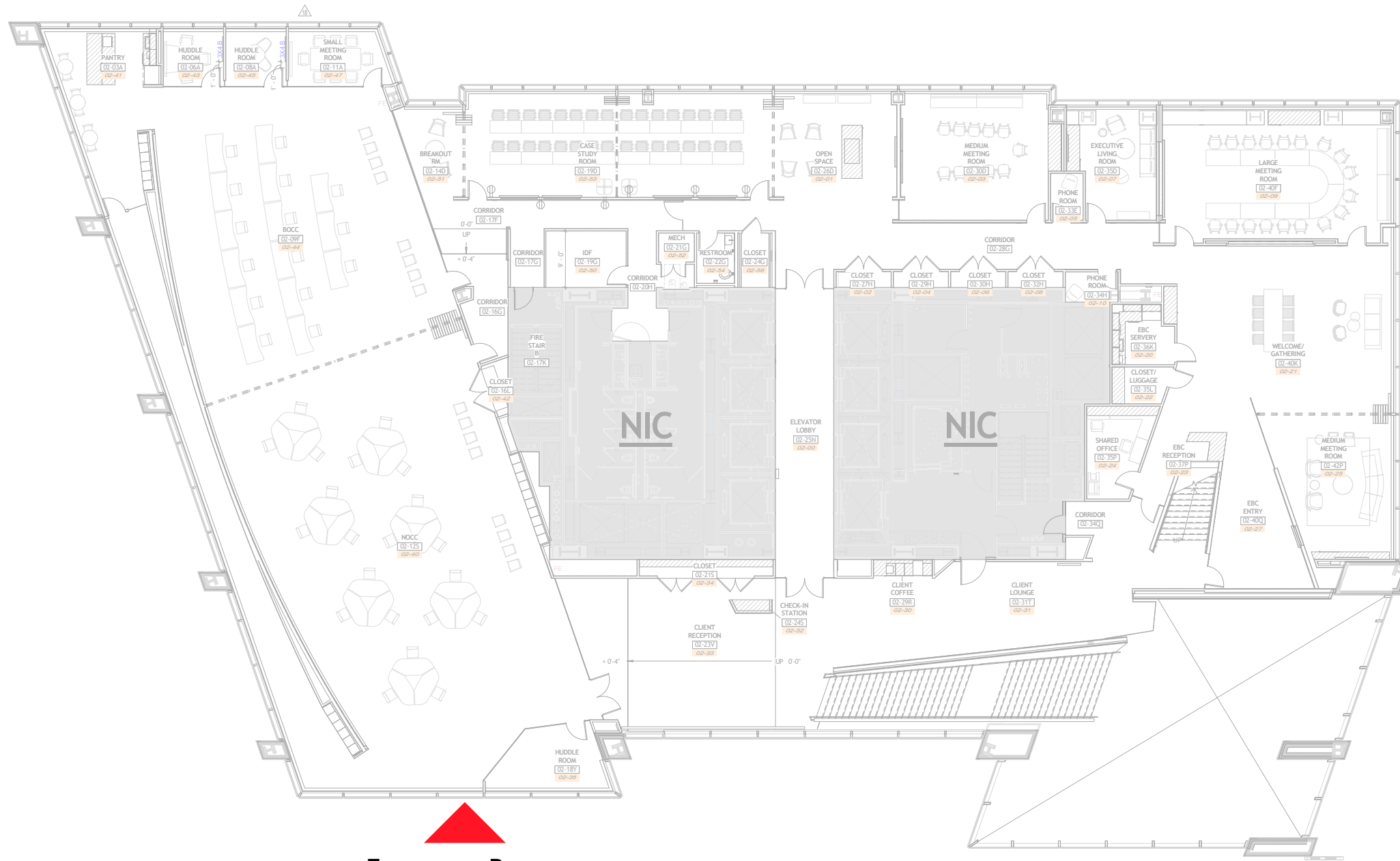
"A" aligns to the height of 2 terracotta panels.  
"145" aligns to the top of a terracotta panel.

# SIGN TYPE C

Street Level Identification



**“Future Home of” Banner**



**Temporary Banner Location**



# SIGN SPECIFICATIONS

This document is owned by and the information contained in it is proprietary to Poblocki Sign Company, LLC. By receipt hereof, the holder agrees not to use the information, disclose it to any third party or reproduce this document without the prior written consent of Poblocki Sign Company, LLC. Holder also agrees to immediately return this document upon request by Poblocki Sign Company, LLC.

This document represents only an approximation of material colors specified. Actual product colors may vary from this print or digital image.

**Project**

**Client Name**

Install Street Address  
Install Town & State

Scale: See Layout/Section/Elevations

Original Page Size: 11" x 17"

**Notes**

**Revisions**

REV	DESCRIPTION	BY	DATE

Rep.: Internal Requestor (Sales/Sales Support)

Drawn By: Artist Initials      Orig. Date: 00/00/00

Sign Loc. No. **IF KNOWN**

**000**

Short Description

**SHEET NUMBER**

**17**

**DESCRIPTION**

1st surface vinyl application  
Vinyl: IJ4620  
Laminate: 8510

**TYPEFACES**

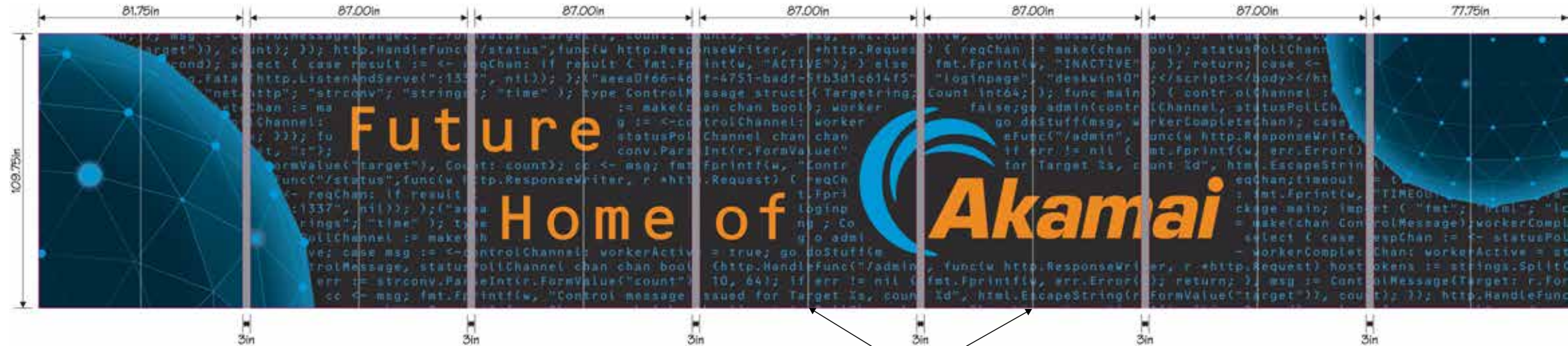
all fonts including tracking and kerning  
all client supplied vector fonts

**COLORS/FINISHES**

Orange: PMS 144c  
Blue: 2925c

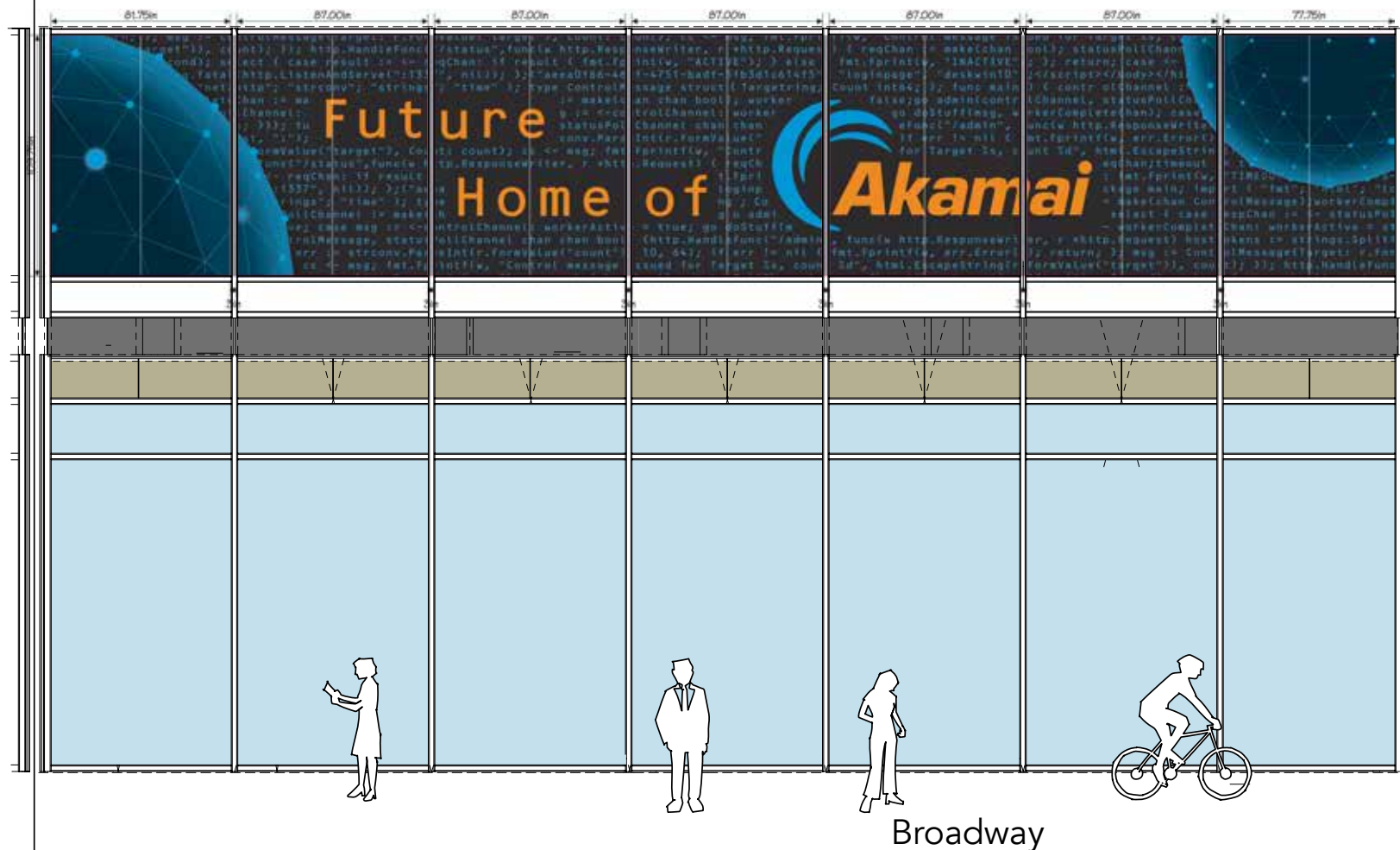
**INSTALLATION**

Graphics applied 1st surface to the outside of the windows, and to be viewed from outside the building.

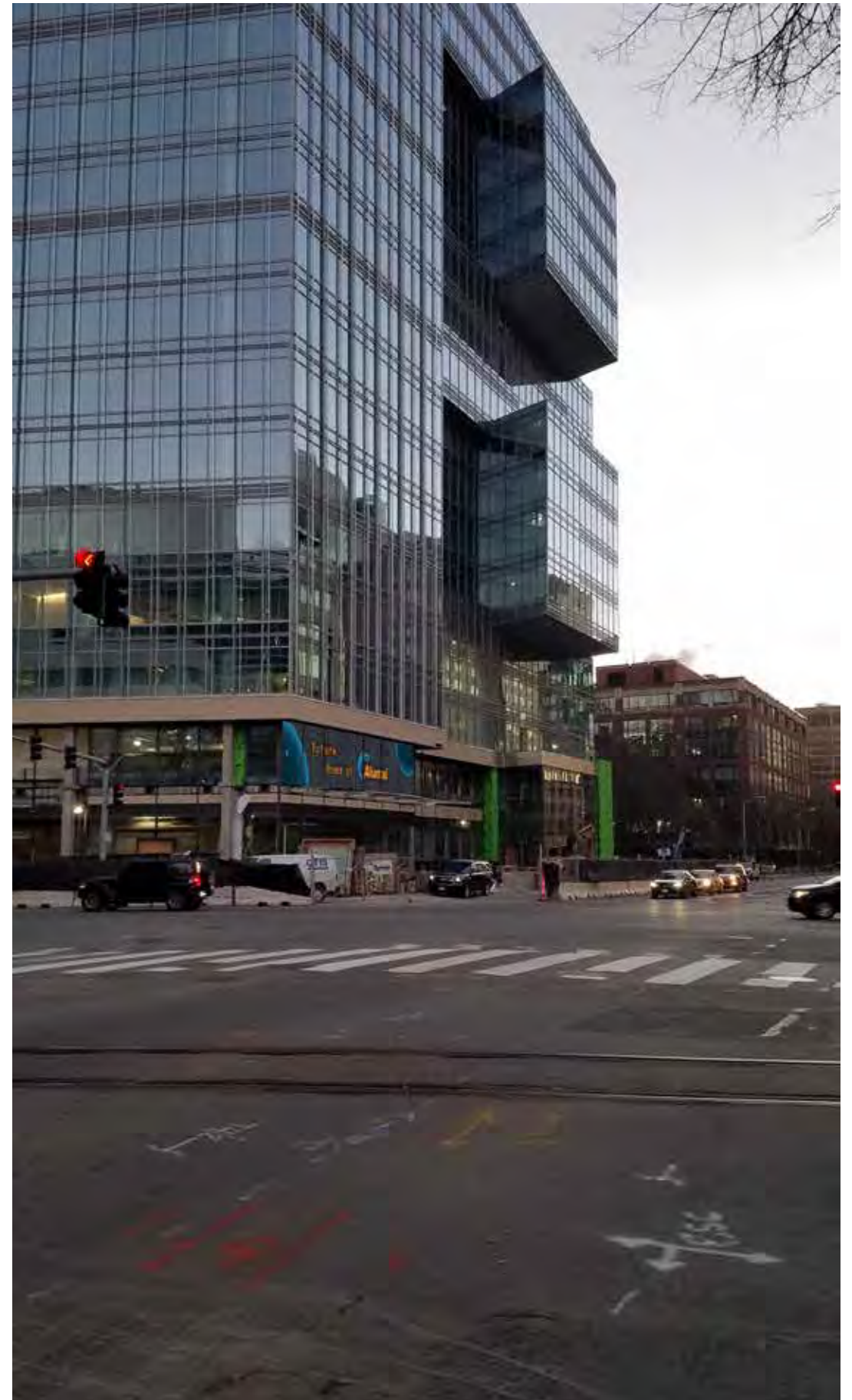
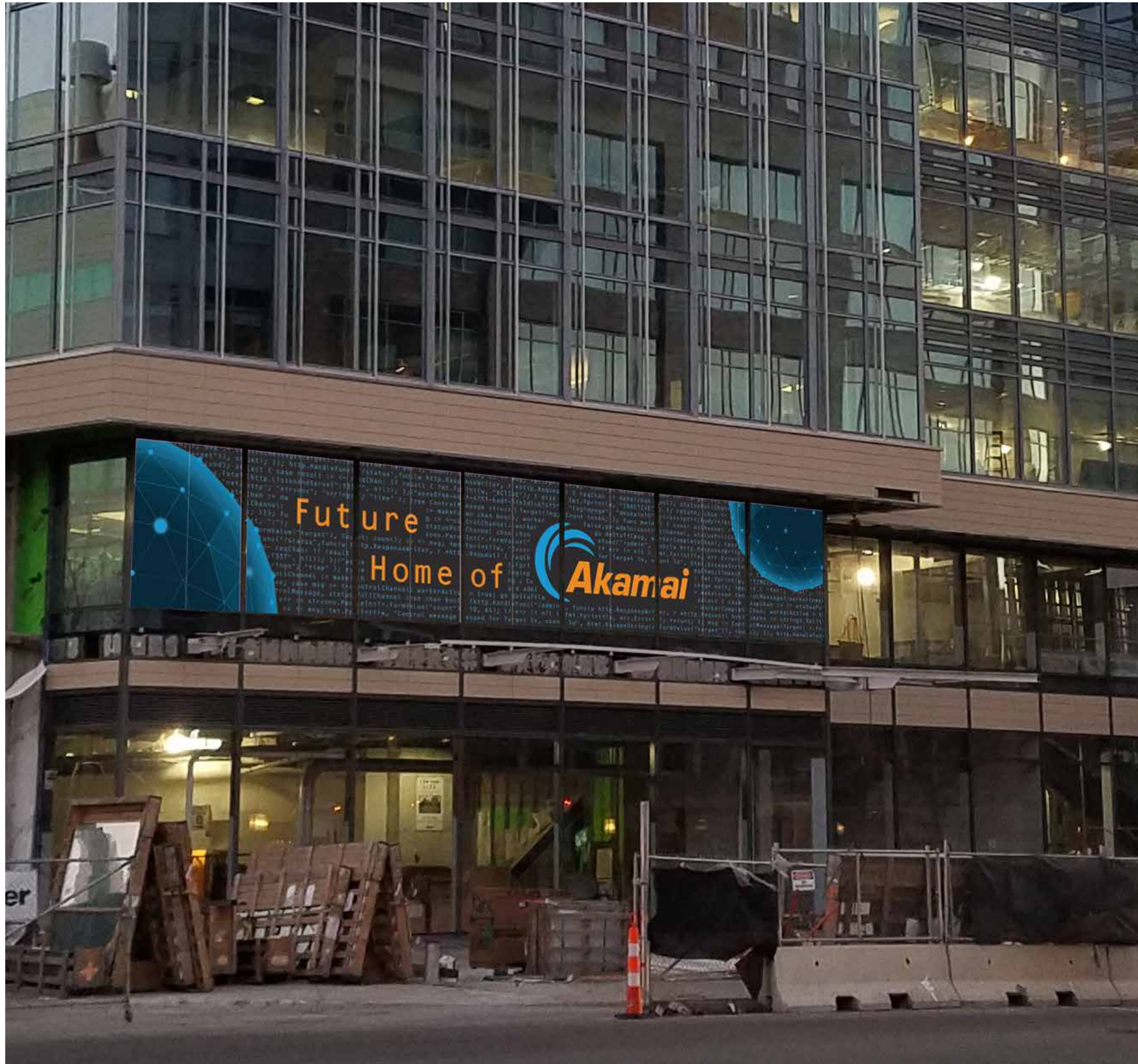


0.5" panel overlap  
(1 overlap per window)

**Corner**



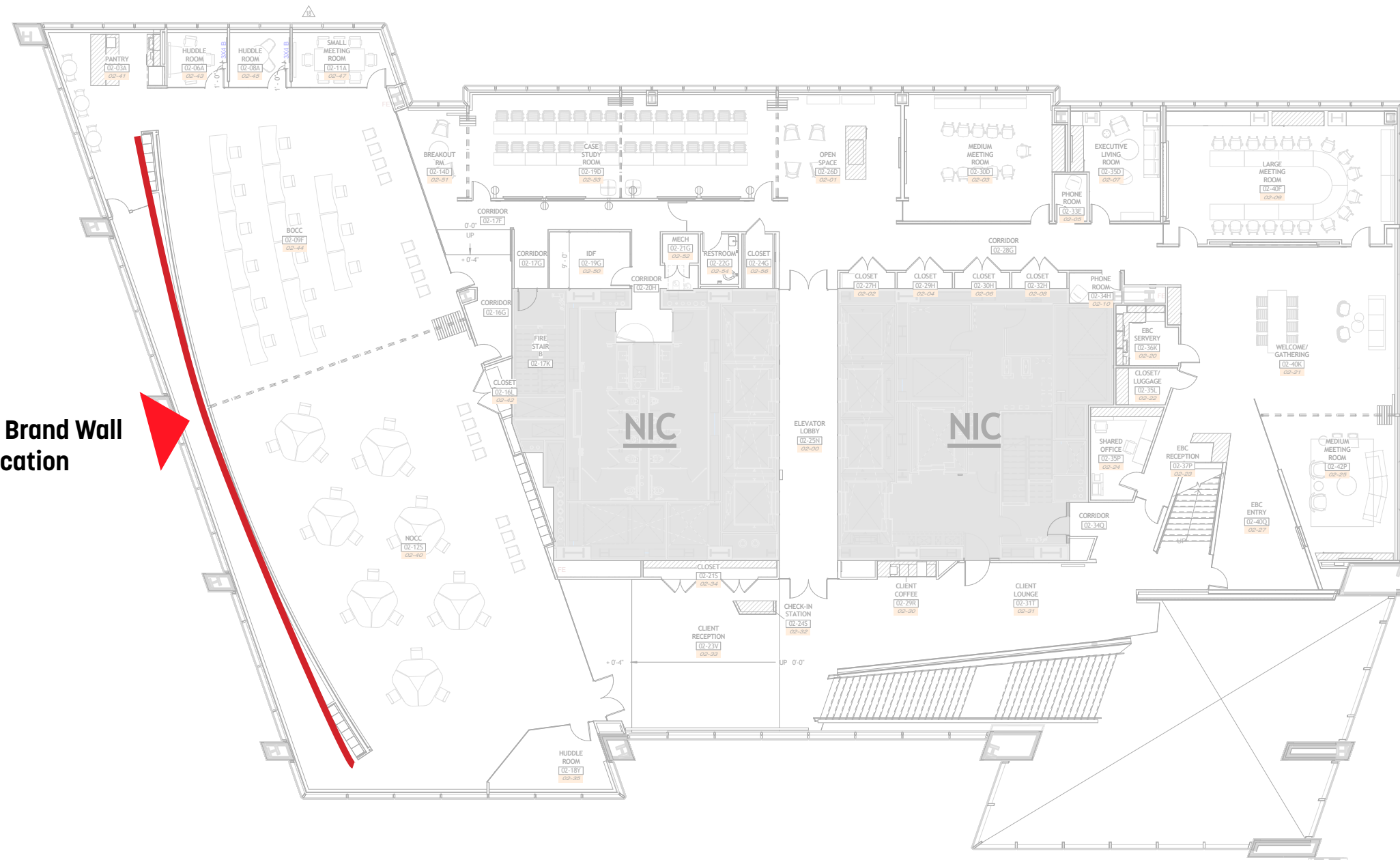











**Interior Branding Wall (Level 2)**

**Level 2 Brand Wall Location**



**Colors printed to match:**

-  1 - BM-2018-20 Mandarin Orange
-  2 - BM-2017-20 Sharp Cheddar
-  3 - BM-2016-20 Citrus Orange
-  4 - BM-2015-10 Electric Orange
-  5 - BM-2014-20 Rumba Orange



**3 Elevation Detail**  
Scale: 1/2"=1' LOC. BR 2.01

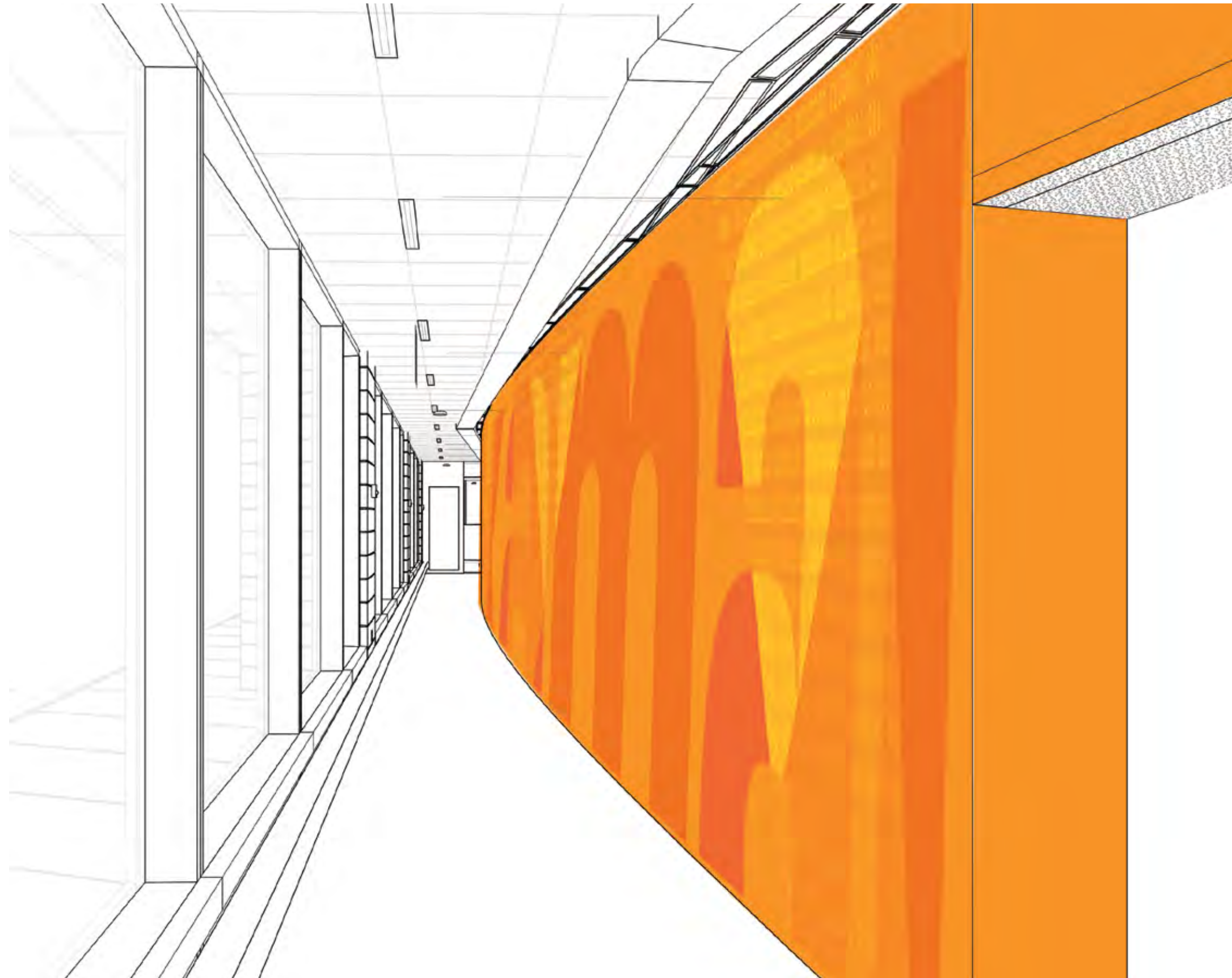


**4 Elevation Detail**  
Scale: 1/2"=1' LOC. BR 2.01

Printed graphic  
Colors to match Benjamin Moore colors listed above



**1 ELEVATION**  
Scale: 1/8"=1' LOC. BR 2.01



## Interior Brand Wall

Setback from glass surface  
5'-4" at apex of arc  
7'-0" at start of arc

Orange color is a mixture of the Akamai Brand, as well as Floor Accent color.

Building uses multiple colors changing every few levels as accents.

Hexcode provided by Akamai is representative of one of the code strings written by Akamai, to find security threats

Swaths of color changes mirror architectural reveals within building itself.







