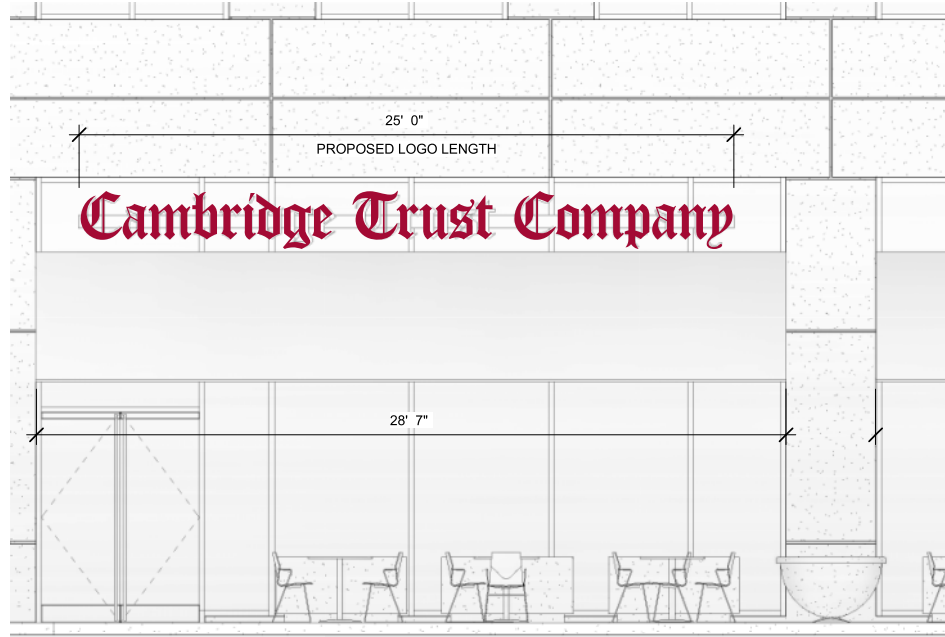


HALO ILLUMINATED CHANNEL LETTERS - Ames St

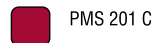


QTY: 2



CTC AMES STREET FRONTAGE

COLOR DETAILS



PMS 201 C

Letters = 55.5 Sq Ft

68 Sq Ft with Alum Backer

PROPOSED SIGN

68 SQ.FT. ELEVATION SCALE: 1" = 3'-0"

3" deep aluminum aluminum reverse-channel letters. 1/4" aluminum backer plates spaced 2" from back of letters. Halo illumination provided by white LED lighting modules inside the letter cans which have diffused acrylic backers. Electrical by others.

BBS BACK BAY SIGN
 65 Industrial Way Wilmington, MA
 tel.978.203.0570 • fax.978.203.0573
 www.backbaysign.com

This document, and information contained herein are exclusive property of back bay sign company; communication, reproduction, or other uses are prohibited except with written authorization given in connection with company business. It is the customers responsibility to proofread all drawings for spelling, grammar, and layout. Common law copyright is claimed as of the date completed. © Back Bay Sign, LLC., 65 Industrial Way., Wilmington, MA 01887.

Rev#	Revision Notes	DATE	BY
1	Initial sketch.	8/17/16	MB
2	Window Graphics	2/3/17	MB

Customer Approval Date _____

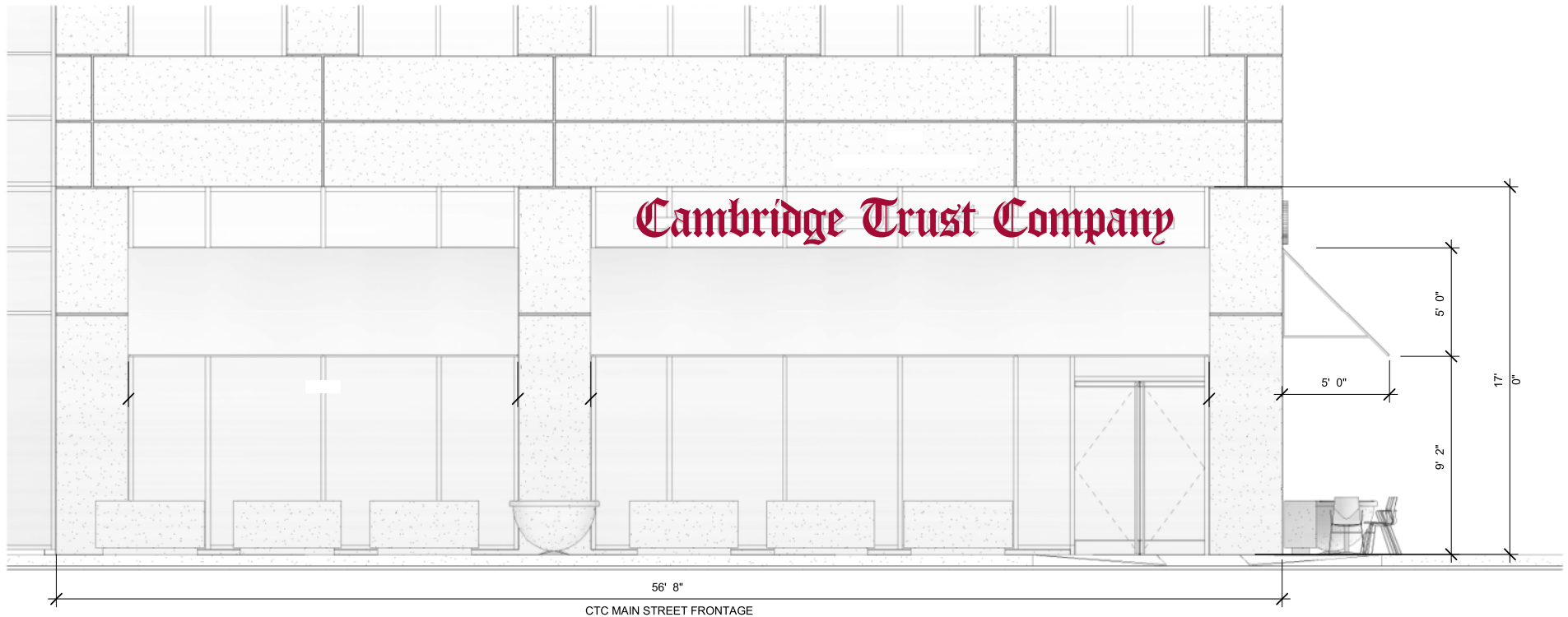
Customer: Cambridge Trust
Contact Name: Rob Siegrist
Contact Tel: 617.441.1443
Site Address: 415 Main St.
 Cambridge, MA

Job#: 1225133
Project Mgr: MA
Account Rep: MA
Date: 8/17/2016
Page: 2 of 10

HALO ILLUMINATED CHANNEL LETTERS - Main St



QTY: 1



COLOR DETAILS

 PMS 201 C

 **BACK BAY SIGN**
 65 Industrial Way Wilmington, MA
 tel.978.203.0570 • fax.978.203.0573
 www.backbaysign.com

Letters = 55.5 Sq Ft
 68 Sq Ft with Alum Backer

This document, and information contained herein are exclusive property of back bay sign company; communication, reproduction, or other uses are prohibited except with written authorization given in connection with company business. It is the customers responsibility to proofread all drawings for spelling, grammar, and layout. Common law copyright is claimed as of the date completed. © Back Bay Sign, LLC., 65 Industrial Way., Wilmington, MA 01887.

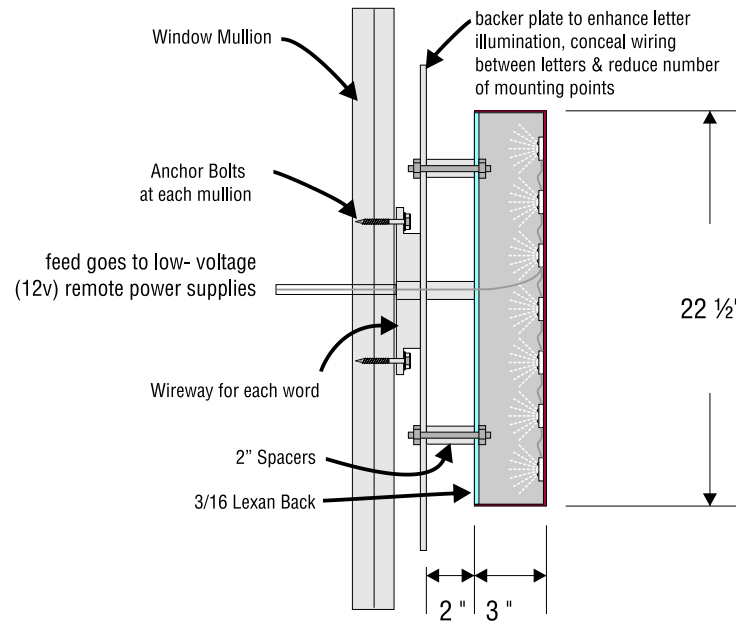
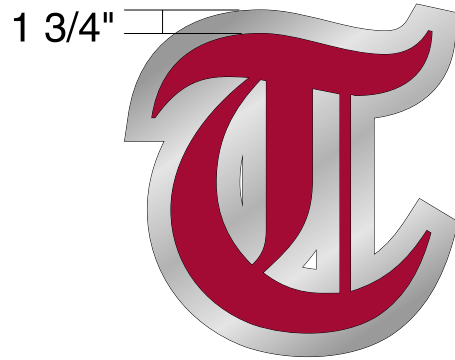
Rev#	Revision Notes	DATE	BY
1	Initial sketch.	8/17/16	MB
2	Window Graphics	2/3/17	MB

Customer Approval _____ Date _____

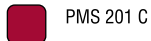
PROPOSED SIGN	68 SQ.FT.	ELEVATION SCALE: 1" = 3'-0"
3" deep aluminum aluminum reverse-channel letters. 1/4" aluminum backer plates spaced 2" from back of letters. Halo illumination provided by white LED lighting modules inside the letter cans which have diffused acrylic backers. Electrical by others.		
Customer: Cambridge Trust	Job#: 1225133	Project Mgr: MA
Contact Name: Rob Siegrist	Contact Tel: 617.441.1443	Account Rep: MA
Site Address: 415 Main St. Cambridge, MA	Date: 8/17/2016	Page: 3 of 10

HALO ILLUMINATED CHANNEL LETTERS

Detail QTY:2



COLOR DETAILS



PMS 201 C

BBS BACK BAY SIGN
 65 Industrial Way Wilmington, MA
 tel.978.203.0570 • fax.978.203.0573
 www.backbaysign.com

This document, and information contained herein are exclusive property of back bay sign company; communication, reproduction, or other uses are prohibited except with written authorization given in connection with company business. It is the customers responsibility to proofread all drawings for spelling, grammar, and layout. Common law copyright is claimed as of the date completed. © Back Bay Sign, LLC., 65 Industrial Way., Wilmington, MA 01887.

Rev#	Revision Notes	DATE	BY
1	Initial sketch.	8/17/16	MB
2	Window Graphics	2/3/17	MB

Customer Approval _____ Date _____

PROPOSED SIGN 68 SQ.FT. ELEVATION SCALE: 1" = 3'-0"

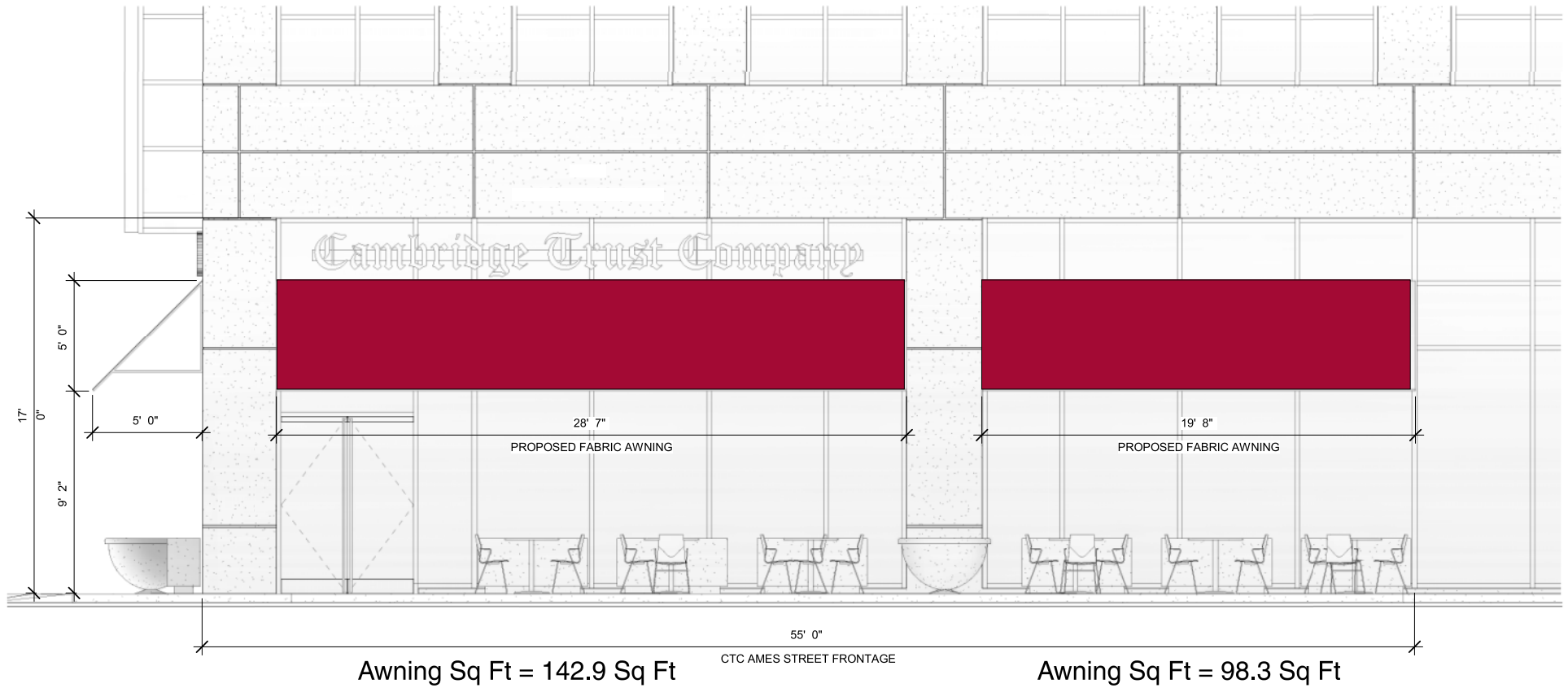
3" deep aluminum aluminum reverse-channel letters. 1/4" aluminum backer plates spaced 2" from back of letters. Halo illumination provided by white LED lighting modules inside the letter cans which have diffused acrylic backers. Electrical by others.

Customer: Cambridge Trust
Contact Name: Rob Siegrist
Contact Tel: 617.441.1443
Site Address: 415 Main St.
 Cambridge, MA

Job#: 1225133
Project Mgr: MA
Account Rep: MA
Date: 8/17/2016
Page: 4 of 10

AWNINGS

Ames Street



COLOR DETAILS



PMS 201 C

BBS BACK BAY SIGN
 65 Industrial Way Wilmington, MA
 tel.978.203.0570 • fax.978.203.0573
 www.backbaysign.com

This document, and information contained herein are exclusive property of back bay sign company; communication, reproduction, or other uses are prohibited except with written authorization given in connection with company business. It is the customers responsibility to proofread all drawings for spelling, grammar, and layout. Common law copyright is claimed as of the date completed. © Back Bay Sign, LLC., 65 Industrial Way., Wilmington, MA 01887.

Rev#	Revision Notes	DATE	BY
1	Initial sketch.	8/17/16	MB
2	Window Graphics	2/3/17	MB

Customer Approval _____ Date _____

PROPOSED SIGN 241.2 SQ.FT. ELEVATION SCALE: 1" = 3'-0"

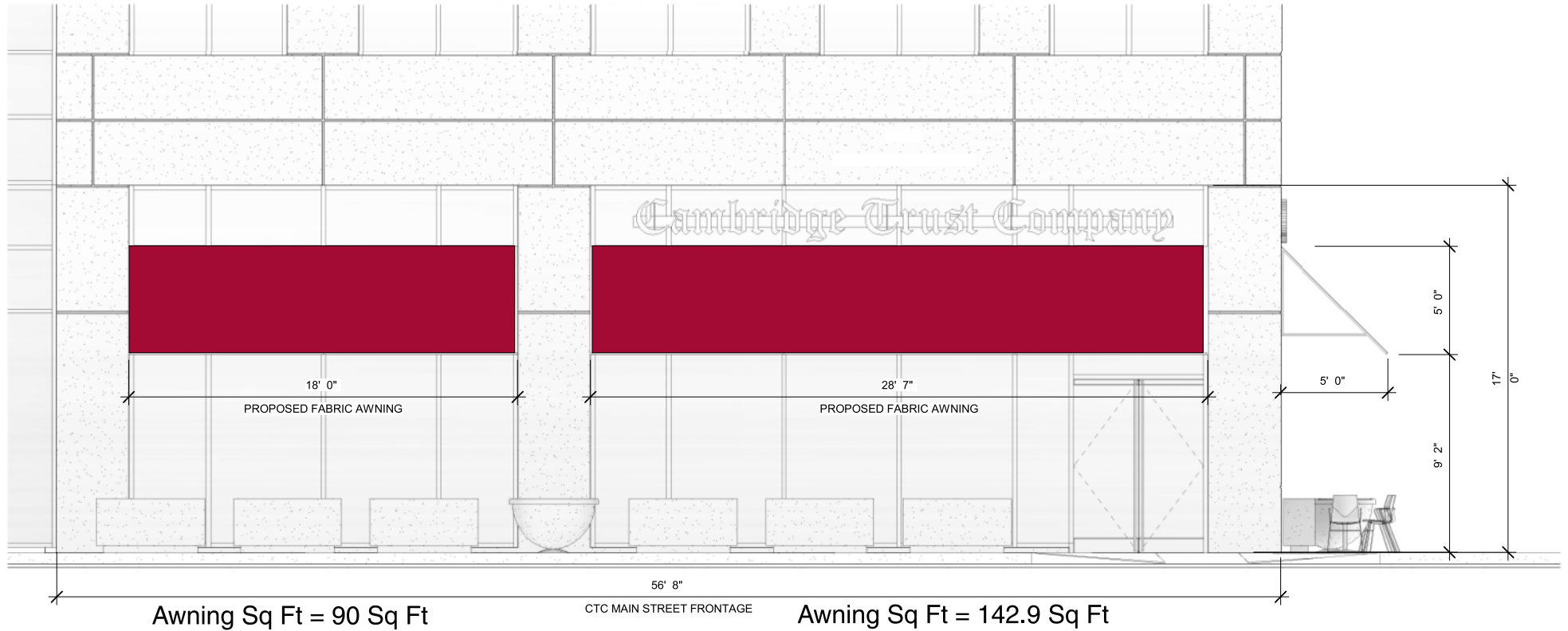
(2) - 5'H x 5'Deep, 1" aluminum Square tube framed canvas awnings. One color matching PMS 201 C. No Graphics.

Customer: Cambridge Trust
Contact Name: Rob Siegrist
Contact Tel: 617.441.1443
Site Address: 415 Main St.
 Cambridge, MA

Job#: 1225133
Project Mgr: MA
Account Rep: MA
Date: 8/17/2016
Page: 5 of 10

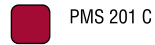
AWNINGS

Main Street



Total Awning Sq Ft = 232.9 Sq Ft

COLOR DETAILS



PMS 201 C

PROPOSED SIGN

232.9 SQ.FT. ELEVATION SCALE: 1" = 3'-0"

(2) - 5'H x 5'Deep, 1" aluminum Square tube framed canvas awnings. One color matching PMS 201 C. No Graphics.

BBS BACK BAY SIGN
 65 Industrial Way Wilmington, MA
 tel.978.203.0570 • fax.978.203.0573
 www.backbaysign.com

This document, and information contained herein are exclusive property of back bay sign company; communication, reproduction, or other uses are prohibited except with written authorization given in connection with company business. It is the customers responsibility to proofread all drawings for spelling, grammar, and layout. Common law copyright is claimed as of the date completed. © Back Bay Sign, LLC., 65 Industrial Way., Wilmington, MA 01887.

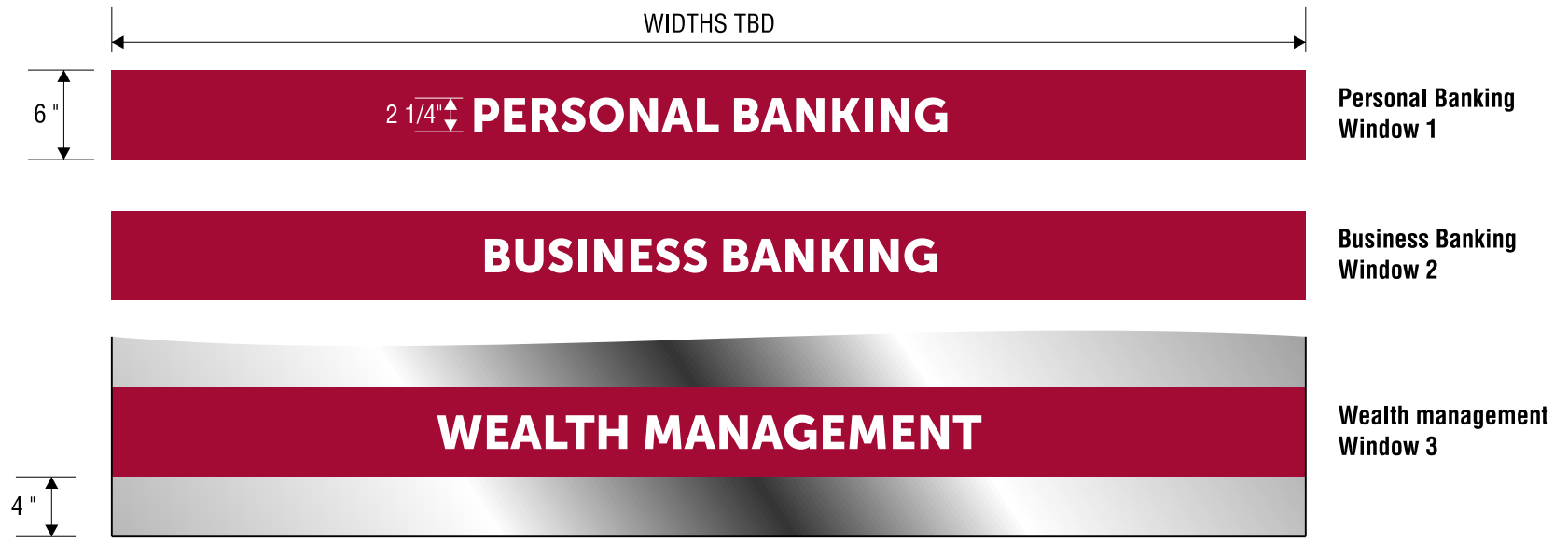
Rev#	Revision Notes	DATE	BY
1	Initial sketch.	8/17/16	MB
2	Window Graphics	2/3/17	MB

Customer Approval _____ Date _____

Customer: Cambridge Trust
Contact Name: Rob Siegrist
Contact Tel: 617.441.1443
Site Address: 415 Main St.
 Cambridge, MA

Job#: 1225133
Project Mgr: MA
Account Rep: MA
Date: 8/17/2016
Page: 6 of 10

WINDOW GRAPHICS





QTY 19 TBD

PROPOSED GRAPHICS SCALE: 1" = 1'-0"

Adhesive vinyl window banding and text applied to interior surface of windows.
Banding to start 4" above base of glass.

Note:
Window Width TBD

COLOR DETAILS	
	3M Translucent Cardinal Red Pantone PMS 201 C
	3M HP Matte White

BBS BACK BAY SIGN
65 Industrial Way Wilmington, MA
tel.978.203.0570 • fax.978.203.0573
www.backbaysign.com

This document, and information contained herein are exclusive property of back bay sign company; communication, reproduction, or other uses are prohibited except with written authorization given in connection with company business. It is the customers responsibility to proofread all drawings for spelling, grammar, and layout. Common law copyright is claimed as of the date completed. © Back Bay Sign, LLC., 65 Industrial Way., Wilmington, MA 01887.

Rev#	Revision Notes	DATE	BY
1	Initial sketch.	8/17/16	MB
2	Window Graphics	2/3/17	MB

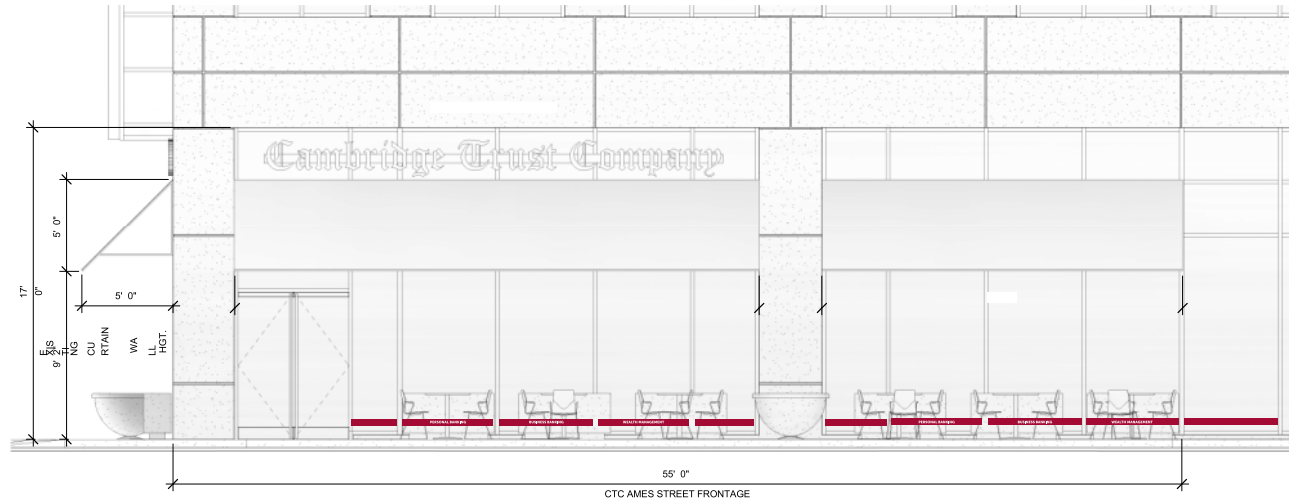
Customer: Cambridge Trust
Contact Name: Rob Siegrist
Contact Tel: 617.441.1443
Site Address: 415 Main St.
Cambridge, MA

Job#: 1225133
Project Mgr: MA
Account Rep: MA
Date: 8/17/2016
Page: 7 of 10

Customer Approval _____ Date _____

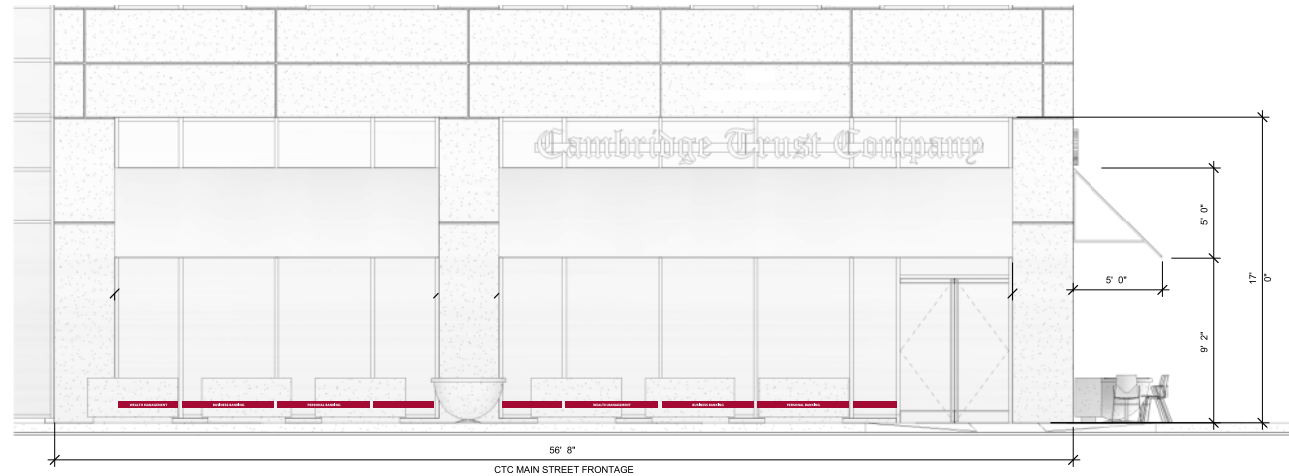
WINDOW GRAPHICS

Ames Street



WINDOW GRAPHICS

Main Street



COLOR DETAILS

- 3M Translucent Cardinal Red
Pantone PMS 201 C
- 3M HP Matte White

BBS BACK BAY SIGN
65 Industrial Way Wilmington, MA
tel.978.203.0570 • fax.978.203.0573
www.backbaysign.com

This document, and information contained herein are exclusive property of back bay sign company; communication, reproduction, or other uses are prohibited except with written authorization given in connection with company business. It is the customers responsibility to proofread all drawings for spelling, grammar, and layout. Common law copyright is claimed as of the date completed. © Back Bay Sign, LLC., 65 Industrial Way., Wilmington, MA 01887.

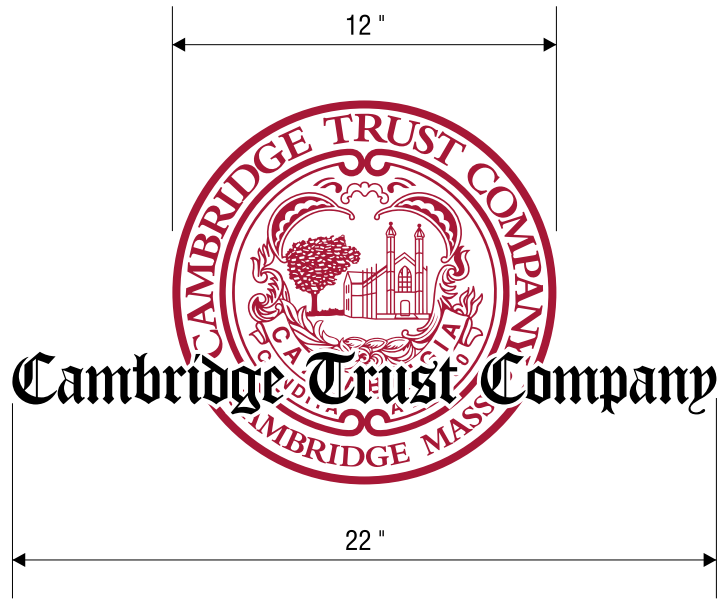
Rev#	Revision Notes	DATE	BY
1	Initial sketch.	8/17/16	MB
2	Window Graphics	2/3/17	MB

Customer Approval _____ Date _____

Customer: Cambridge Trust
Contact Name: Rob Siegrist
Contact Tel: 617.441.1443
Site Address: 415 Main St.
Cambridge, MA

Job#: 1225133
Project Mgr: MA
Account Rep: MA
Date: 8/17/2016
Page: 8 of 10

Note:
Window Widths TBD

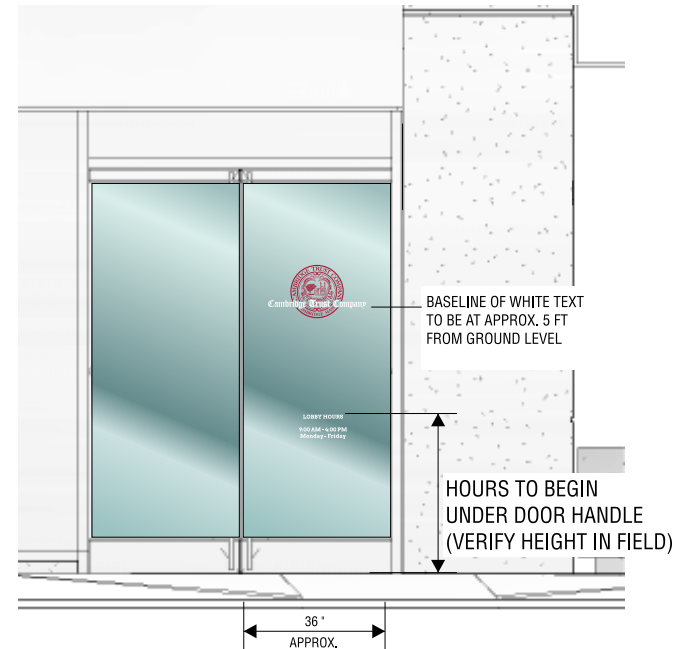


1" **LOBBY HOURS**
 2 1/4"
 1" **9:00 AM - 4:00 PM**
 5/8"
 1" **Monday - Friday**

DOOR HOURS
Ames Street



DOOR HOURS
Main Street



COLOR DETAILS

- 3M Cardinal Red
- 3M White

PROPOSED GRAPHICS

DRAWING SCALE: 1" = 3'-0"

Red seal logo and white text applied to interior surface of main entrance.
Quantity: (2) doors, same graphics on each

Note:
Window Widths TBD

BBS BACK BAY SIGN
 65 Industrial Way Wilmington, MA
 tel.978.203.0570 • fax.978.203.0573
 www.backbaysign.com

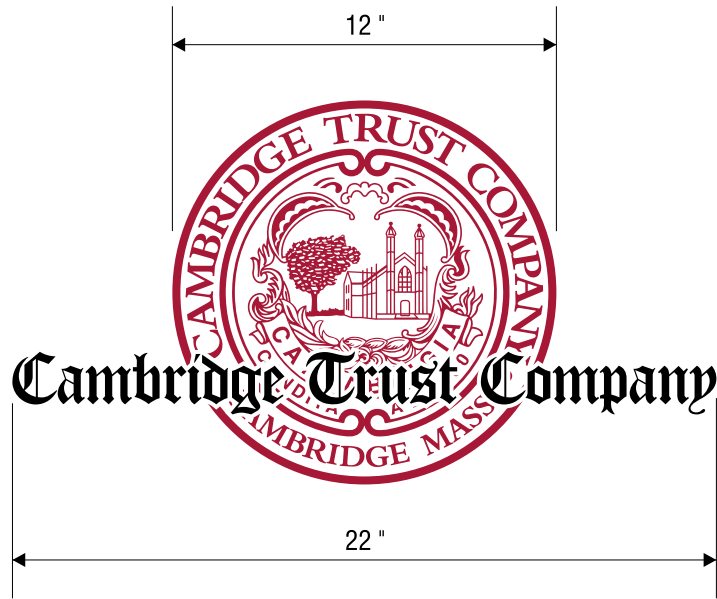
This document, and information contained herein are exclusive property of back bay sign company; communication, reproduction, or other uses are prohibited except with written authorization given in connection with company business. It is the customers responsibility to proofread all drawings for spelling, grammar, and layout. Common law copyright is claimed as of the date completed. © Back Bay Sign, LLC., 65 Industrial Way., Wilmington, MA 01887.

Rev#	Revision Notes	DATE	BY
1	Initial sketch.	8/17/16	MB
2	Window Graphics	2/3/17	MB

Customer: Cambridge Trust
Contact Name: Rob Siegrist
Contact Tel: 617.441.1443
Site Address: 415 Main St.
 Cambridge, MA

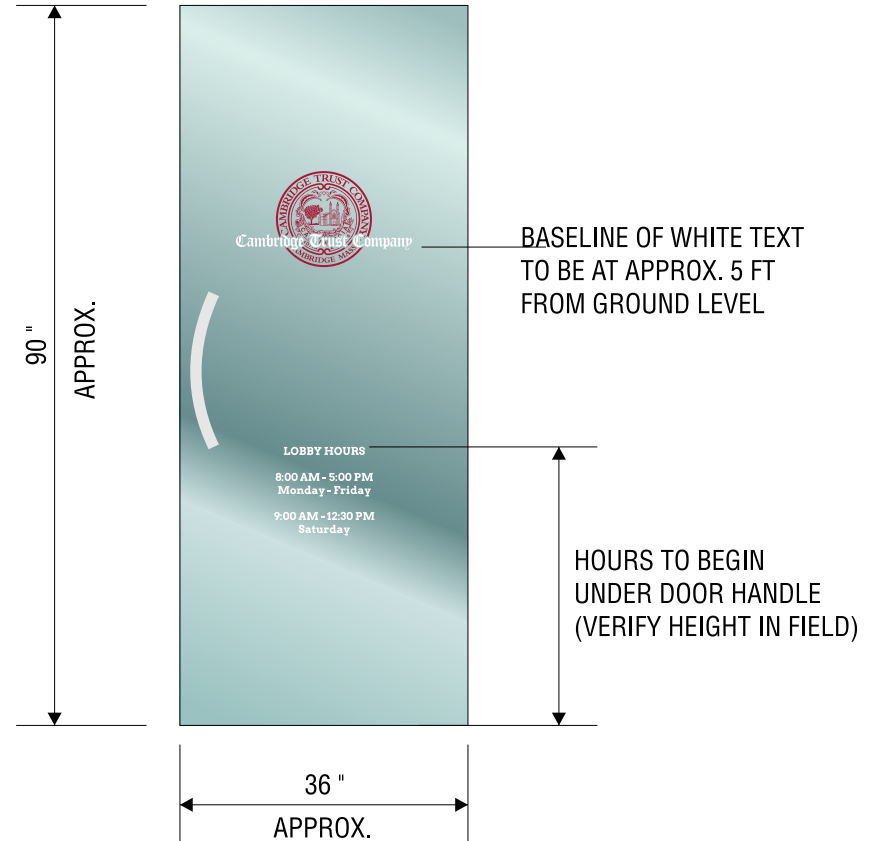
Job#: 1225133
Project Mgr: MA
Account Rep: MA
Date: 8/17/2016
Page: 9 of 10

Customer Approval _____ **Date** _____



60
From Grade"

DOOR HOURS
Rear/Secondary



1" **LOBBY HOURS**
2 1/4"
1" **9:00 AM - 4:00 PM**
5/8"
1" **Monday - Friday**

COLOR DETAILS

- 3M Cardinal Red
- 3M White

PROPOSED GRAPHICS

DRAWING SCALE: 1" = 3'-0"

Red seal logo and white text applied to interior surface of Rear entrance.
Quantity: (1) door

Note:
Window Widths TBD

This document, and information contained herein are exclusive property of back bay sign company; communication, reproduction, or other uses are prohibited except with written authorization given in connection with company business. It is the customers responsibility to proofread all drawings for spelling, grammar, and layout. Common law copyright is claimed as of the date completed. © Back Bay Sign, LLC., 65 Industrial Way., Wilmington, MA 01887.

BBS BACK BAY SIGN
65 Industrial Way Wilmington, MA
tel.978.203.0570 • fax.978.203.0573
www.backbaysign.com

Rev#	Revision Notes	DATE	BY
1	Initial sketch.	8/17/16	MB
2	Window Graphics	2/3/17	MB

Customer: Cambridge Trust
Contact Name: Rob Siegrist
Contact Tel: 617.441.1443
Site Address: 415 Main St.
Cambridge, MA

Job#: 1225133
Project Mgr: MA
Account Rep: MA
Date: 8/17/2016
Page: 10 of 10

Customer Approval _____ **Date** _____