

## KSTEP Funding Proposal Form

Date Submitted: February 5<sup>th</sup>, 2020  
Project Name: Kendall Square Bus Shelter Funding  
Implementing Partner: Cambridge Redevelopment Authority  
Primary Contact: Alexandra Levering

---

### I. PROJECT DESCRIPTION

---

To fund the purchase, delivery and installation of a bus shelter at 500 Main Street.

### II. INVESTMENT JUSTIFICATION

---

Bus shelters are an essential part of any successful urban mass-transit system. Shelters increase visibility and access to the bus, increases riders' comfort, especially during inclement weather, and creates space to provide route information.

The location at 500 Main Street was selected for three reasons. The site location is large enough for a shelter, the stop will serve two bus routes, the EZRide and the MIT Tech Shuttle, and the stop was the 5<sup>th</sup> most used pickup location for EZRide, excluding North Station.

### III. KEY ASSUMPTIONS & POTENTIAL RISKS

---

That an agreement to maintain new shelters can be established.

### IV. REFERENCE DOCUMENTS & LINKS

---

- Transport Kendall - [www.transportkendall.org](http://www.transportkendall.org)
- EZRide [www.charlesrivertma.org](http://www.charlesrivertma.org)
- Kendall Square Mobility Task Force - [www.cambridgema.gov/CDD/Projects/Transportation/kendallsquaremobilitytaskforce](http://www.cambridgema.gov/CDD/Projects/Transportation/kendallsquaremobilitytaskforce)

### V. LONG-TERM FINANCIAL SUSTAINABILITY

---

Once installed, a bus shelter needs little investment besides routine trash removal, snow clearing and cleaning. Minor repairs may be needed over time. Shelters typically have a life span of 20 years.

## VI. TIMELINE

ACTIVITY	PROJECTED DATE
KSTEP Governance Committee Review and approval	1/24/2020 – 2/07/2020
Funding proposal refinement	1/24/2020 - 2/11/2020
Approval by CRA Board & City Manager	2/12/2020 - 2/14/2020
Complete Bus Shelter Design & Installation Plan	3/16/2020
Order Shelter (8-10 weeks for fabrication and delivery)	3/16/2020 - 5/25/2020
Sidewalk Foundation Installation	5/18/2020 - 5/22/2020
Installation	5/25/2020

## VII. BUDGET & SCOPE

### Included in Scope

To design, purchase and install a bus shelter and concrete pad, with a small maintenance reserve. Signage clarifying the shelter is not an MBTA stop will be provided, with approval from MBTA Wayfinding.

ITEM DESCRIPTION	PRICE
<b>KSTEP ITEMS</b>	
Design of Bus Shelter Plan	\$5,000
Furnishing Daytech Bus Shelter – Avanti Transit Shelter & Bench	\$7,845
Freight to Site ( <i>estimated</i> )	\$1,395
Installation of Bus Shelter	
- Labor	\$20,000
- Forklift	\$3,000
Monolithic Concrete Pad (75sf @ 6")	
- Concrete and Labor	\$6,000
- Excavation	\$6,500
Signage	
- Post & Sign	\$75
- Installation	\$300
Maintenance Reserve	\$5,000
10% Contingency	\$5,485
<b>TOTAL</b>	<b>\$60,600</b>
<b>ITEMS FUNDED BY OTHER SOURCES</b>	
<b>TOTAL</b>	<b>\$0</b>
<b>OVERALL TOTAL</b>	<b>\$ 60,600</b>

ITEMS EXCLUDED FROM SCOPE / ADDITIONAL RESOURCE NEEDS

Regular maintenance needs such as trash removal, snow clearing and shelter cleaning. Conversations with MIT to provide routine maintenance are underway.

III. PROJECT MANAGEMENT

Team Members	Project Responsibilities
<u>CRA</u>	<u>Implementing Partner</u>
<u>City of Cambridge</u>	<u>Project Oversight</u>

External Partners	Project Responsibilities
<u>Property Abutter - MIT</u>	<u>Potential partner for routine maintenance</u>

IX. IMPLEMENTING PARTNER AUTHORIZATION

ORGANIZATION: *Cambridge Redevelopment Authority*  
 NAME: *Thomas Evans*  
 SIGNATURE: *[Signature]*  
 TITLE: *Executive Director*  
 DATE: *2-5-20*

X. APPENDIX

Exhibit A: Daytech Avanti canopy shelter design and specifications.  
Exhibit B: Itemized Shelter Maintenance and Replacement List

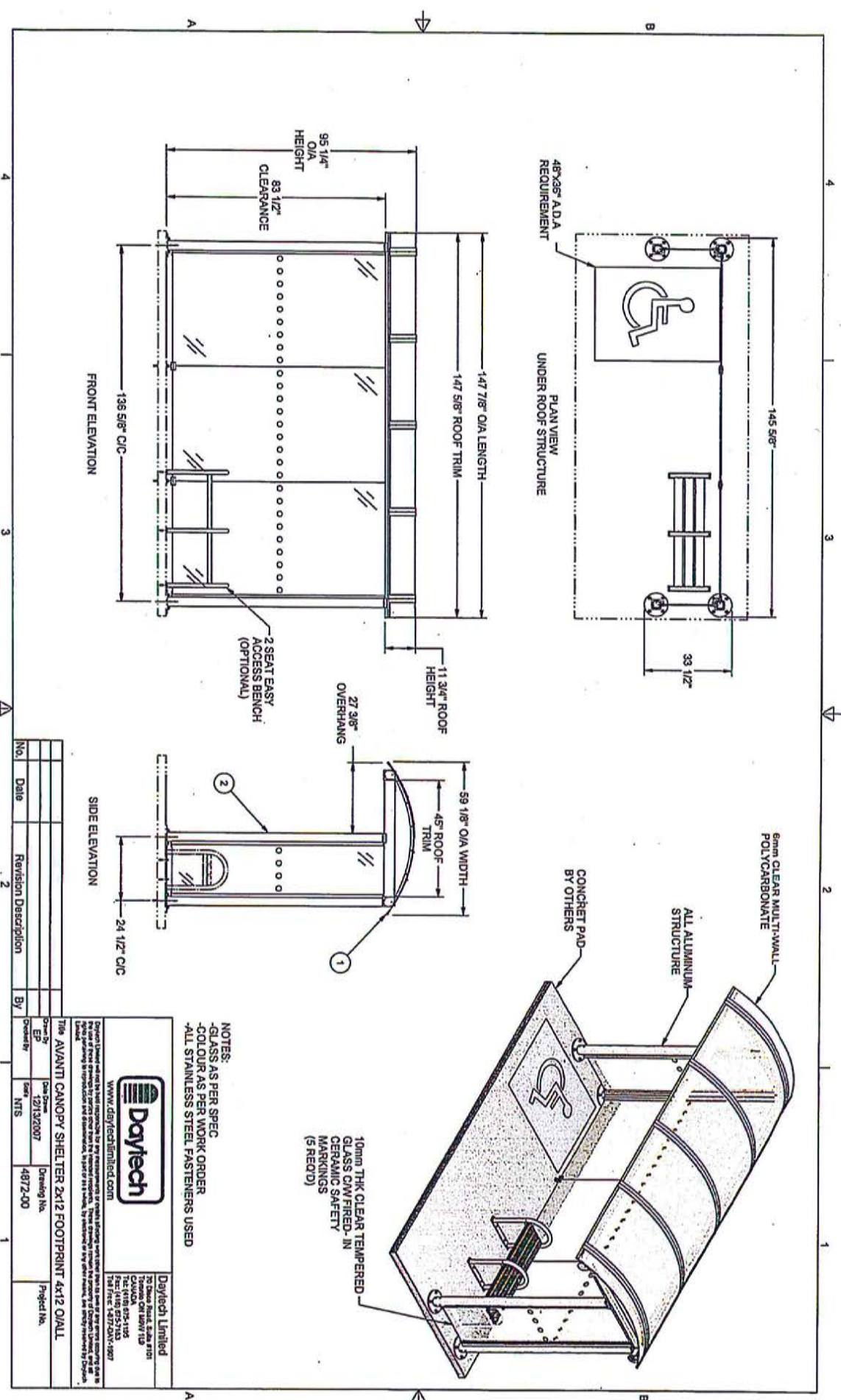
APPROVALS

CAMBRIDGE REDEVELOPMENT AUTHORITY

CAMBRIDGE CITY MANAGER

BY: *[Signature]*  
 NAME: **KATHLEEN L. BORN**  
 TITLE: *Chair*  
 DATE: *7/14/2020*

BY: *[Signature]*  
 NAME: *Louis B. Poy...h*  
 DATE: *9/9/20*



No.	Date	Revision Description	By
2			

Title: AVANTI CANOPY SHELTER 2X12 FOOTPRINT 4X12 OVAL  
 Drawn By: EP  
 Date Drawn: 12/13/2007  
 Drawing No.: 4872-00  
 Project No.:  
 Checked By: MTS

**Daytech**  
 www.daytechlimited.com  
 Daytech Limited  
 10000 148th Ave SW  
 Surrey, BC V4N 1G5  
 Tel: (604) 525-2183  
 Fax: (604) 525-2183  
 1st Flr: 1-437-2441-5827

NOTES:  
 -GLASS AS PER SPEC  
 -COLOUR AS PER WORK ORDER  
 -ALL STAINLESS STEEL FASTENERS USED

10mm THK CLEAR TEMPERED  
 GLASS CW/FIRED-IN  
 CERAMIC SAFETY  
 MARKINGS  
 (5 REDD)



Daytech Limited  
70 Disco Road  
Toronto, ON M9W 1L9

Tel: (416) 675-1195 Fax: (416) 675-7183  
[www.daytechlimited.com](http://www.daytechlimited.com)

November 5, 2019

Alexandra Levering  
Cambridge Redevelopment Authority  
255 Main St, 8<sup>th</sup> Floor  
Cambridge, MA 02142

Tel 617.492.6800  
Email [alevering@cambridgeredevelopment.org](mailto:alevering@cambridgeredevelopment.org)

---

**Quotation # 19-4962**  
**Pedestrian Bus Shelter**  
City of Cambridge MA | 88 Ames St

---

Thank you for your inquiry. We are pleased to provide our quote to supply several **Pedestrian Bus Shelters** for this project.

Daytech is one of North America's leading manufacturers of transit shelters, bicycle shelters kiosks, street furniture and related signage. We have well over 70,000 products installed in every corner of the continent, many in New England.

We quote as follows;

**Item 1: BBC04X12N 'Avanti' Dome Roof Transit Shelter, 4' x 12'**

- Canopy style layout shelter, open front with narrow side walls
  - Nominal roof size: 4' x 12'
  - Nominal footprint: 2' x 12'
- Per Daytech drawing # 4872-00 attached
- Overhanging dome roof composed of aluminum roof ribs and 1/4" (6mm) clear multiwall polycarbonate sheet
- Roof frame featuring 3 way keyed corners with 4" deep sockets for corner post
- Glazing channel with integral gasket in underside of roof framework, and pressure-fit glazing on vertical posts for fast, easy installation and elimination of exposed fasteners
- Wall panels including;
  - 3/8" (10mm) thick tempered safety glass with fired-in safety, "2-inch Yellow Dots" graphics
  - Back wall and partial side walls
- Surface mounted on adjustable aluminum levelling feet, 3" adjustment
- Aluminum extrusion framework with Daytech premium polyester powder coat finish
  - Standard Daytech color: ~~silver, jet black or dark brown~~
  - Preparation and paint to meet AAMA-2603-2 specifications
  - Optional: other colors can be supplied at additional cost. Please specify RAL color code.



**Daytech Limited**  
70 Disco Road  
Toronto, ON M9W 1L9

Tel: (416) 675-1195 Fax: (416) 675-7183  
[www.daytechlimited.com](http://www.daytechlimited.com)

**Quote 19-4962** Cambridge Redevelopment Authority / Cambridge MA / Pedestrian bus shelters  
Page 3

### **General Terms and Conditions**

1. Daytech shelters are factory prefabricated to customer order and specification, crated and shipped in "knock down" condition, with all necessary hardware and instructions for installation on a prepared concrete pad using standard tools and equipment. Roof ships fully assembled.
2. The following items are **not included** and will be provided by purchaser if required;
  - a. Design and supply of a suitable monolithic concrete pad. Minimum pad size should be (shelter length + 18") x (shelter width + 18") x 6" minimum thickness. Asphalt or brick pavers are not recommended surfaces.
  - b. Offloading from truck
  - c. Installation (and electrical connection if required)
  - d. Custom paint colors
  - e. Permits of any kind (ie. building, installation, road occupancy)
  - f. Extended warranty
  - g. Final assembly
3. Prices quoted are firm for 60 days, unless otherwise noted, and are subject to reconfirmation thereafter.
4. Shop drawings are provided for approval within 10 days of order.
5. There will be an extra charge if stamped professional engineers drawings are required.
6. Standard payment terms: **50% deposit with order, balance due Net 30 days from shipment.** Subject to credit approval.
7. All taxes extra.
8. Prices are in US \$ dollars.
9. Purchaser to remit any taxes, if applicable.
10. Prices quoted are firm for 60 days, unless otherwise noted, and are subject to reconfirmation thereafter.
11. Prices quoted valid for shipment through Apr 30, 2020 and subject to change thereafter.
12. Warranty: All Daytech products are covered by Daytech's standard 1-year limited warranty against manufacturing defects and workmanship. Please see attached warranty agreement.
13. Current estimated delivery is approximately **(10) to (12) weeks** after receipt of written purchase order, deposit payment, drawing & color approval, and is subject to confirmation at time of order.

If you have any questions or concerns, please do not hesitate to contact me.

Regards,

**John Duthie**  
VP sales and marketing

☎ 416. 675.1195 x-240 | toll-free 877.329.1907  
Email [jduthie@daytechlimited.com](mailto:jduthie@daytechlimited.com)