



September 28, 2023

Mr. Tom Evans  
Executive Director  
Cambridge Redevelopment Authority  
One Cambridge Center  
Cambridge, MA 02142

BOSTON, MA  
LOS ANGELES, CA  
NEW YORK, NY  
PRINCETON, NJ  
SAN FRANCISCO, CA  
WASHINGTON, D.C.

Subject: Kendall Barber – Permanent Signage Package

Dear Mr. Evans:

Enclosed for your review, please find plans for the proposed permanent signage for the Kendall Barber.

The proposed signage package will provide the Kendall Barber with a new branding for their storefront (surface applied vinyl on glass, branded awning), as well as retail signage that provides visibility to their business from Ames Street (a windblade sign, adhered to a column in Pioneer Way), and directional wayfinding for existing and potential customers (surface vinyl on the transit column at Ames and Pioneer Way).

BXP has reviewed the proposed signage package and shall approve it for future installation upon receipt of your authorization.

Please do not hesitate to contact me if you are in need of additional information. I appreciate your assistance with this project and ask that you return to me a signed, dated copy of this letter to indicate your authorization to proceed with the fabrication and installation of the signage. Thank you.

Sincerely yours,

Emily E. Ediger  
Marketing Coordinator

AUTHORIZATION TO PROCEED WITH THE  
MODIFIED FOURTEEN CAMBRIDGE CENTER  
ROOFTOP PROJECT:

\_\_\_\_\_  
Cambridge Redevelopment Authority    Date

BXP

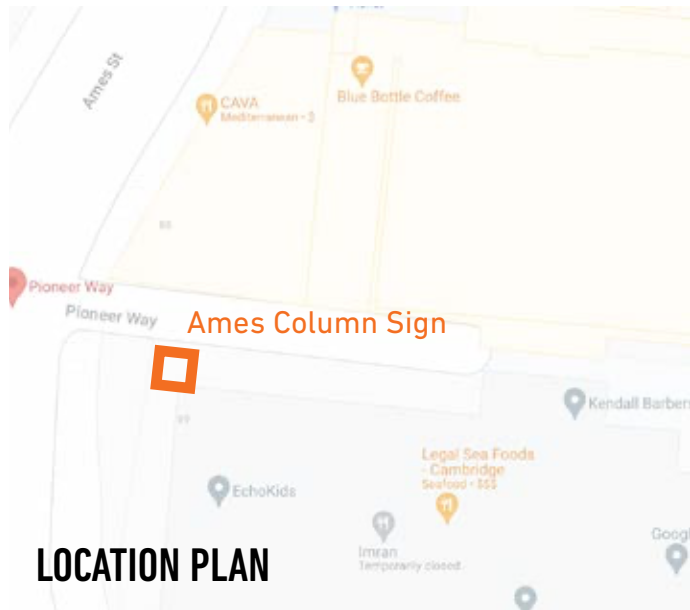
# KENDALL BARBER SIGNAGE

10.13.23

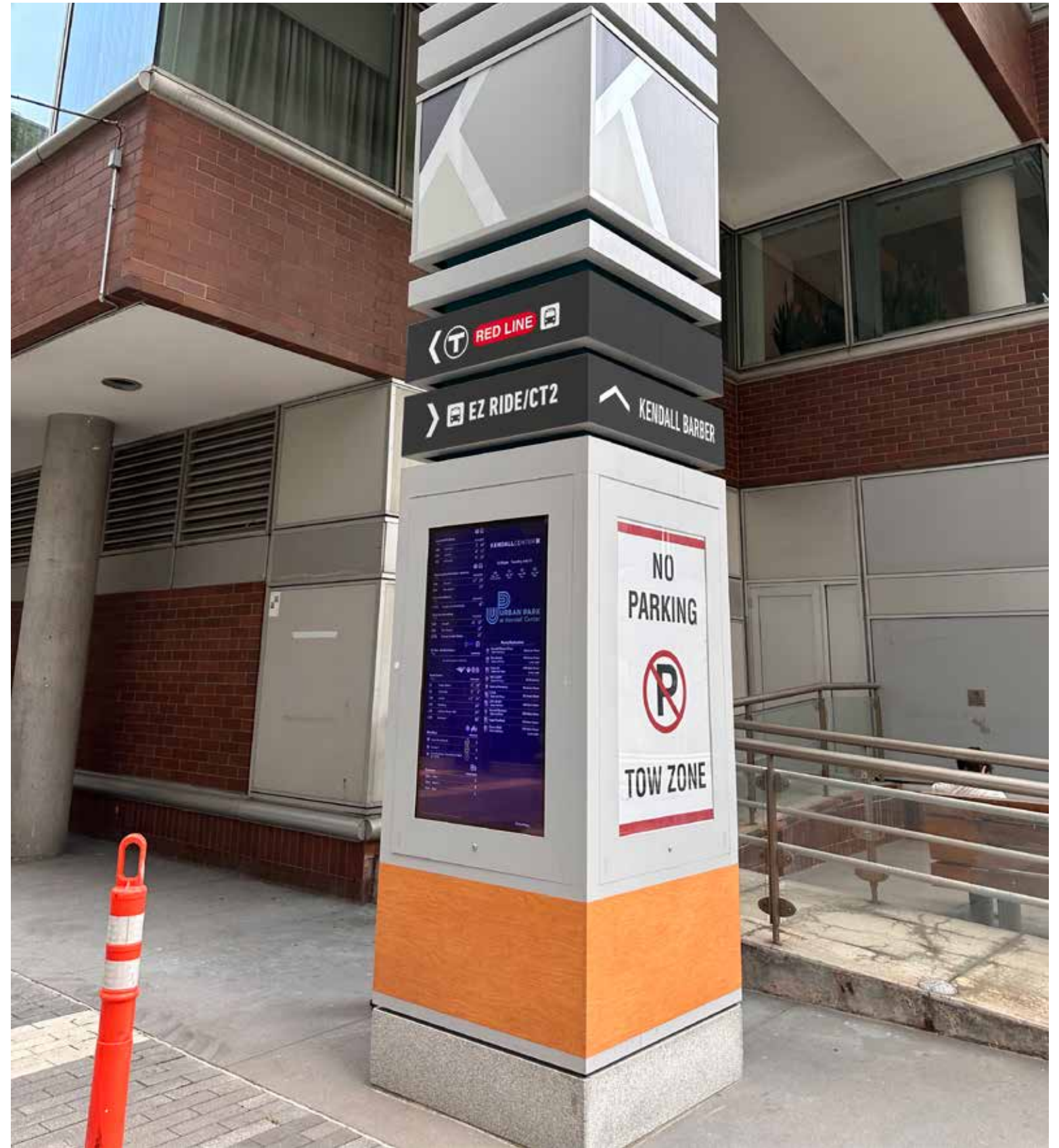
LEVERAGE

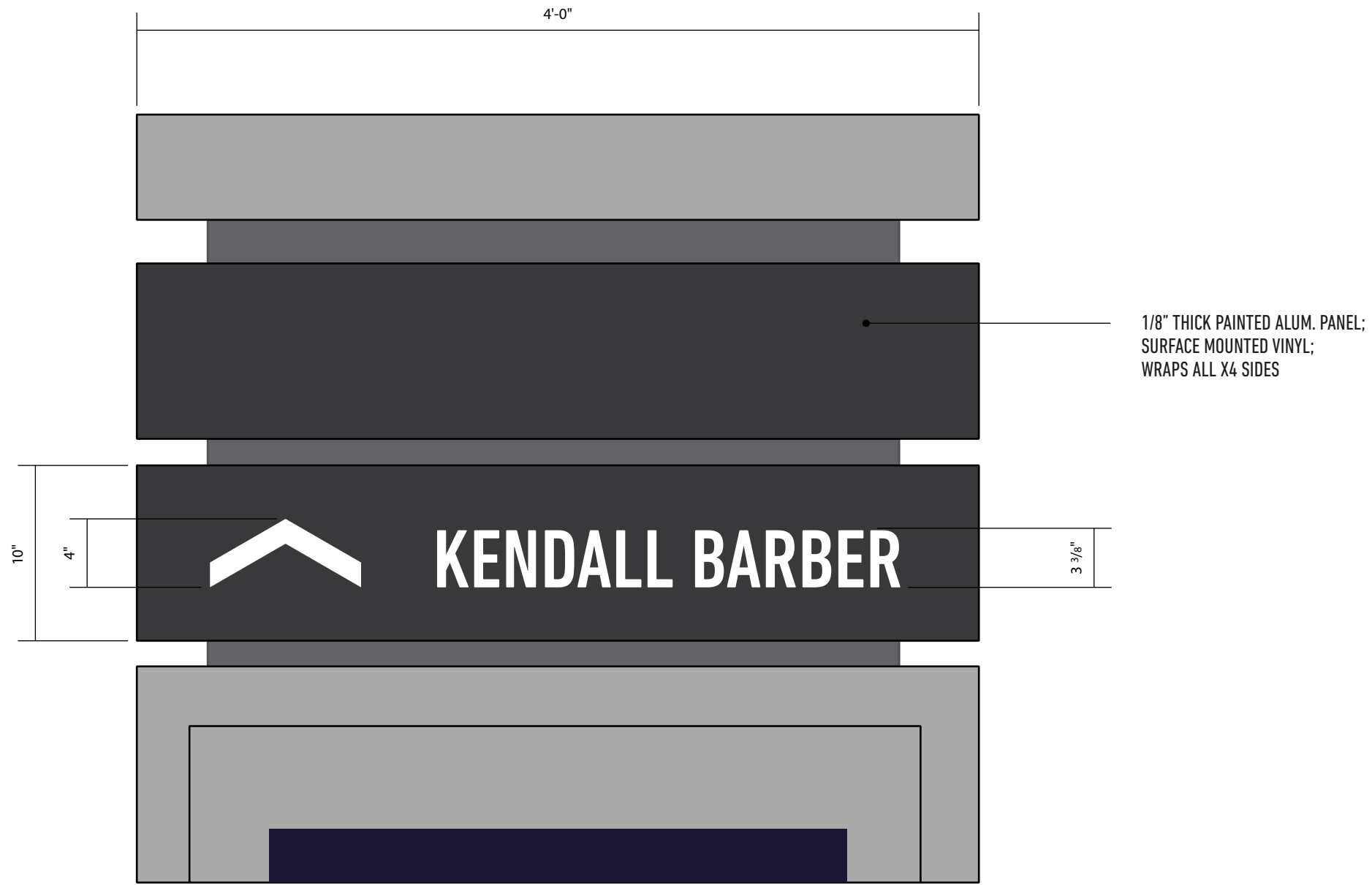


EXISTING



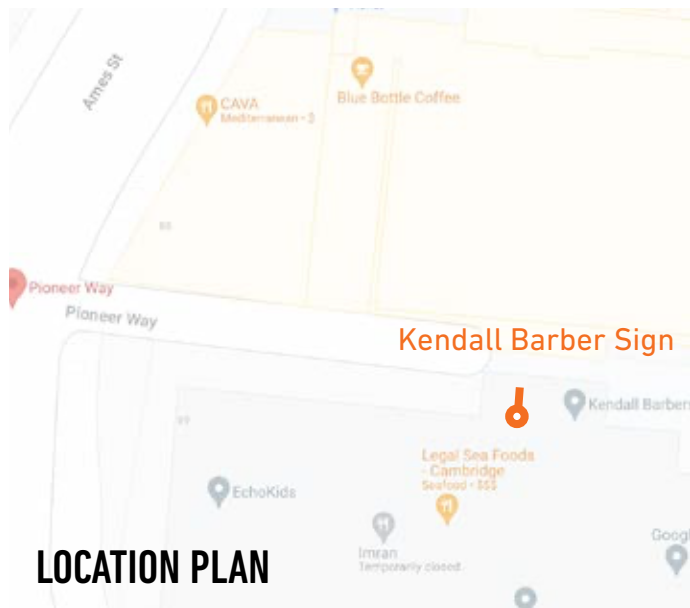
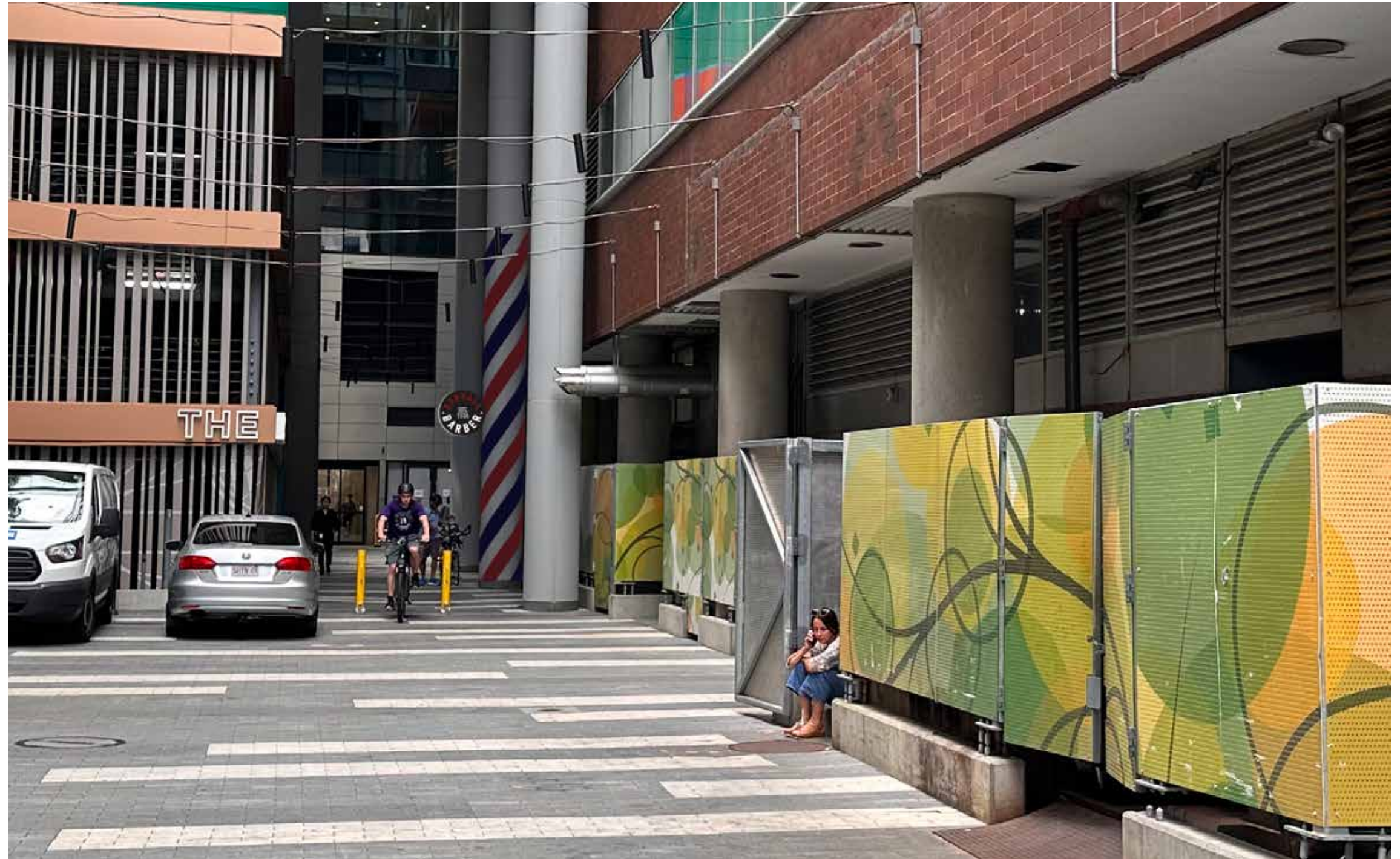
LOCATION PLAN





1 Detail Elevation  
scale: 1 1/2" = 1' - 0"





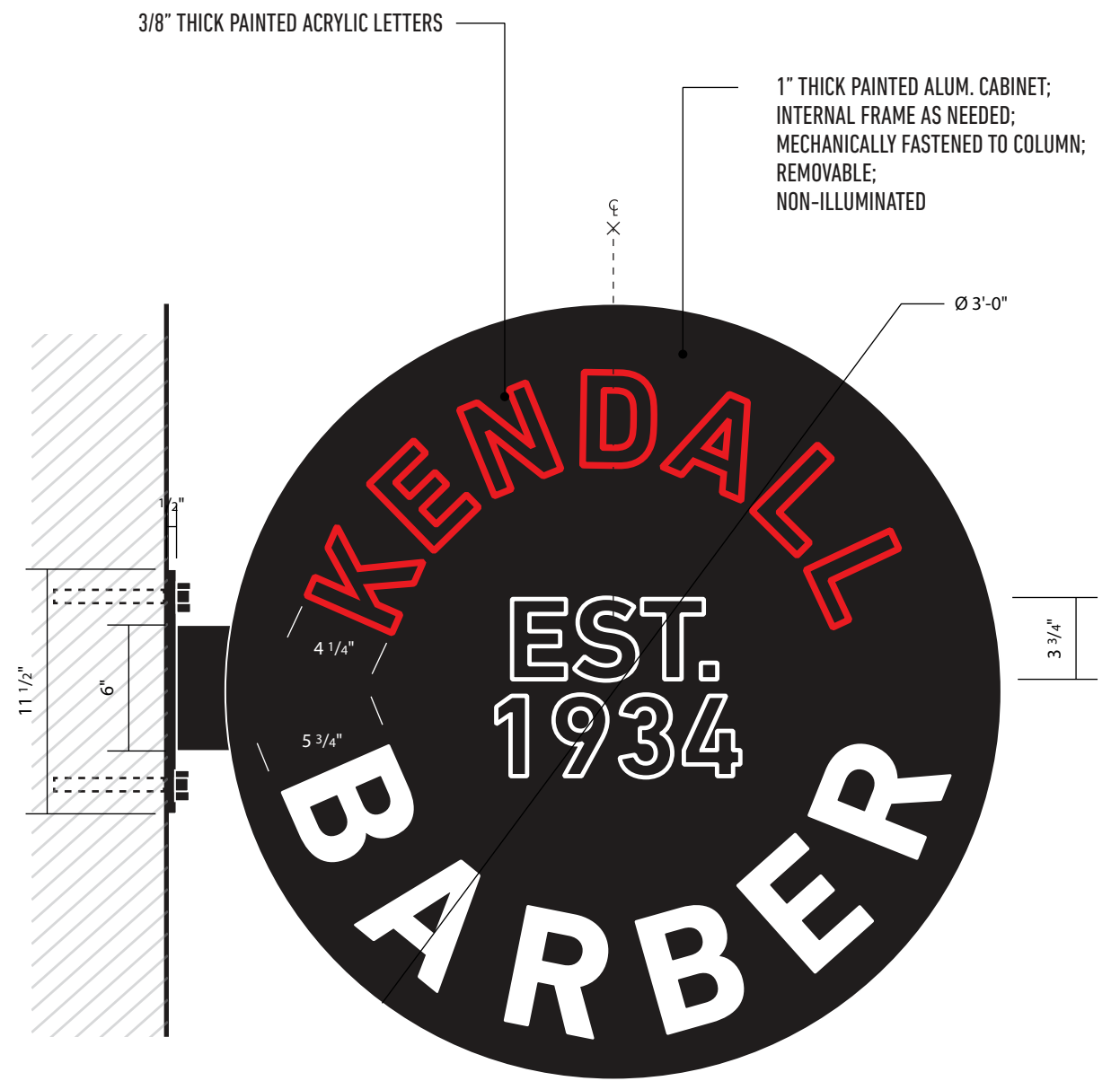


1 Front Elevation  
scale: 3/8" = 1' - 0"



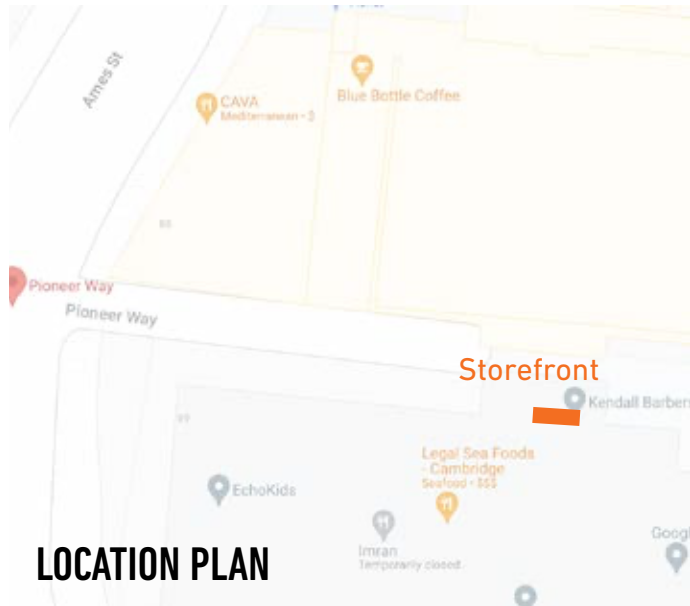
2 Side Elevation  
scale: 3/8" = 1' - 0"

OPTION A - PAINTED PATTERN  
OPTION B - SURFACE APPLIED VINYL



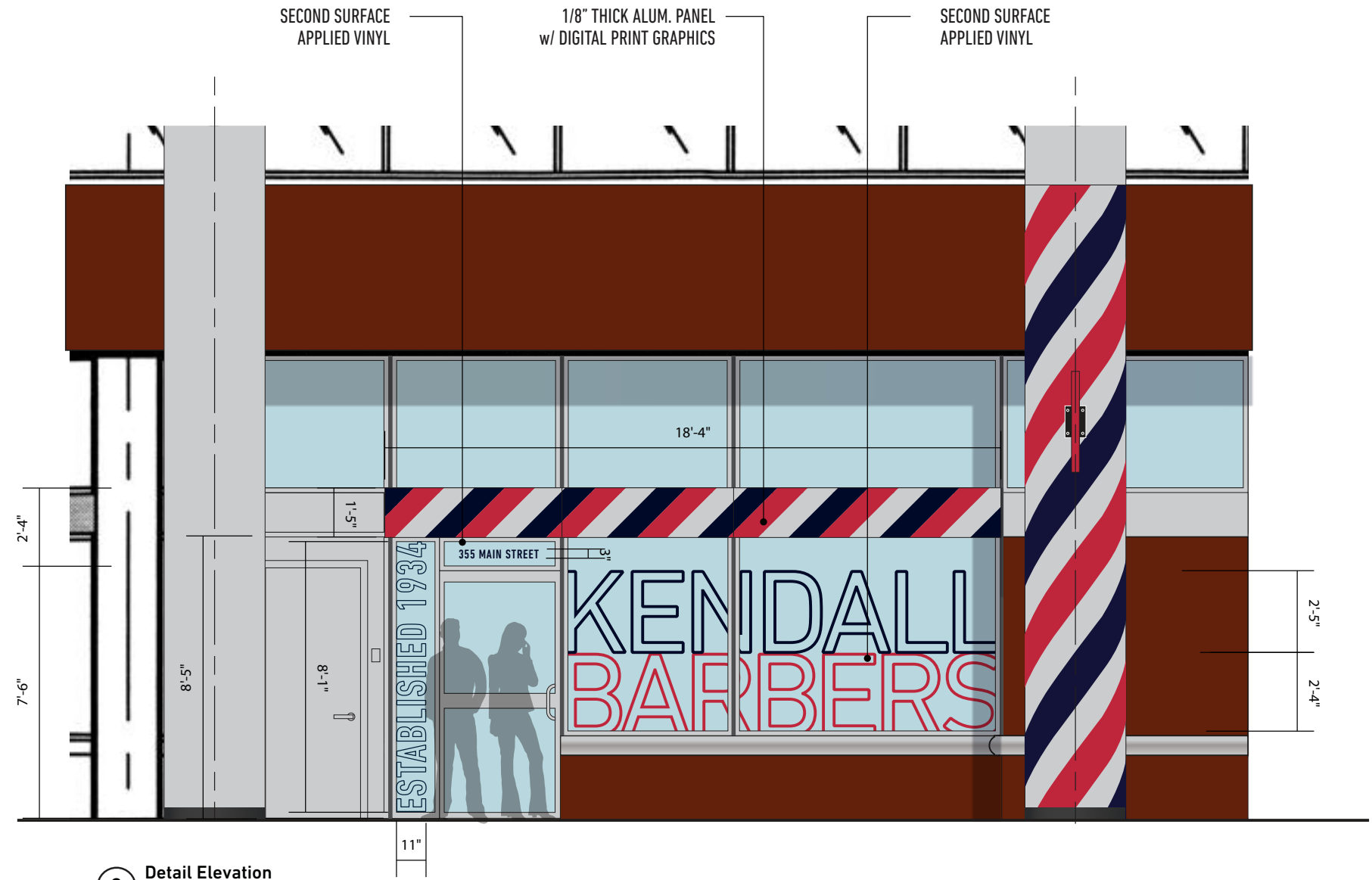
3 Detail Elevation  
scale: 1 1/2" = 1' - 0"







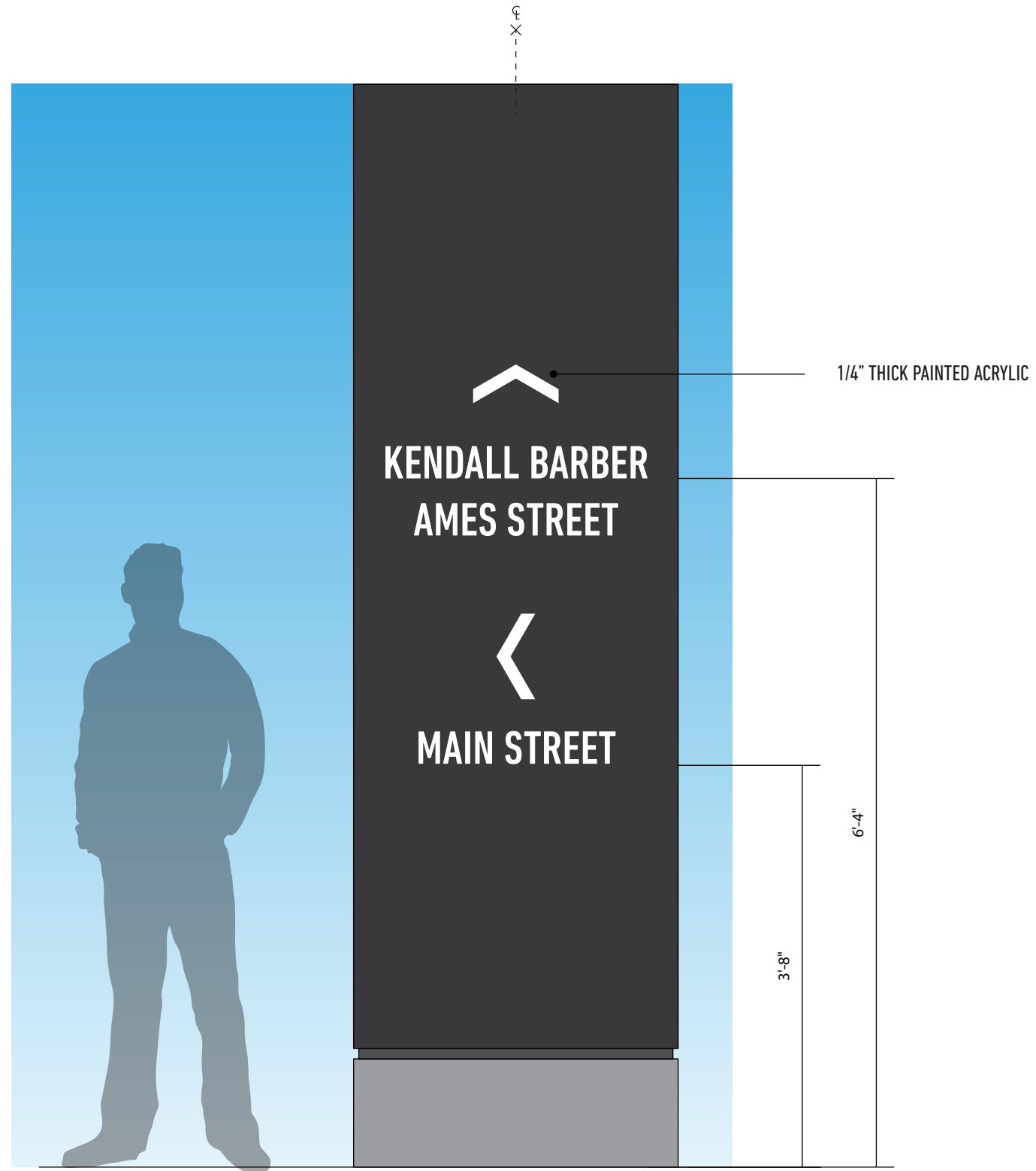
**1 Context Elevation**  
 scale: 1/16" = 1' - 0"



**2 Detail Elevation**  
 scale: 1/4" = 1' - 0"







1 Detail Elevation  
 scale: 3/4" = 1' - 0"



