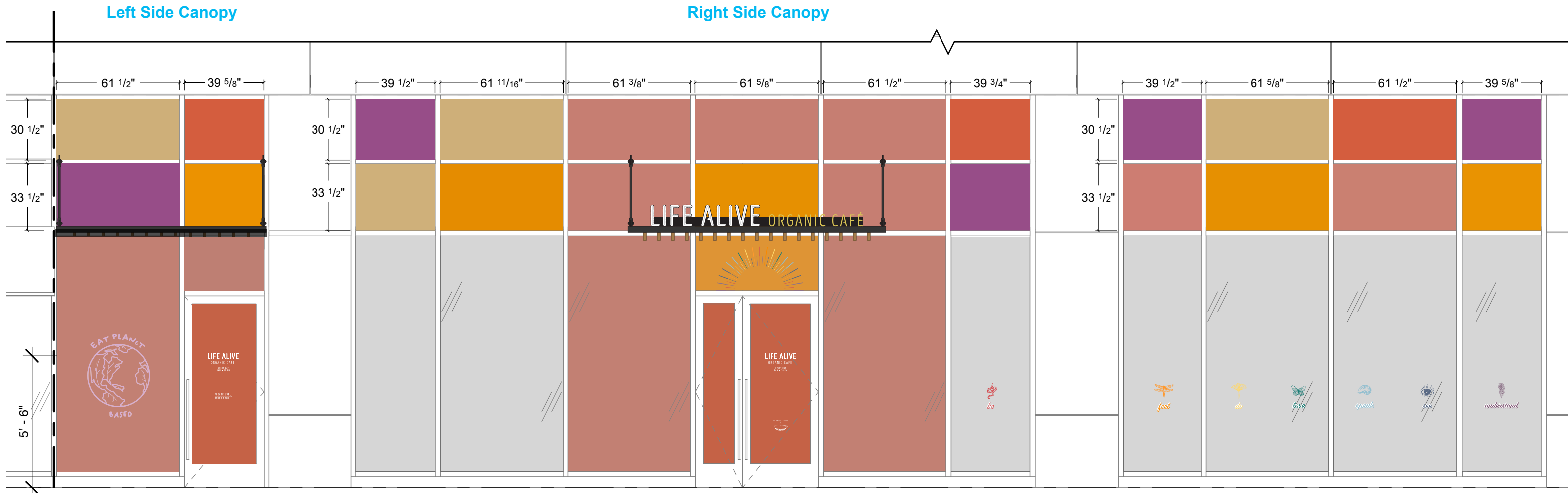


Window Film and Window Graphics - 2nd Surface Applied



E1 Elevation View: #12467.1 Window Film
Scale: 1/4"=1'

Top Row: A, B, C, A, E, E, E, B, C, A, B, C
Bottom Row: C, D, A, D, E, D, E, C, E, D, E, D

- Color Legend:**
- A- Straw 1200
 - B- Salmon 3100
 - C- Orchid 3640
 - D- Mandarin Amber 2300
 - E- Blush 3480

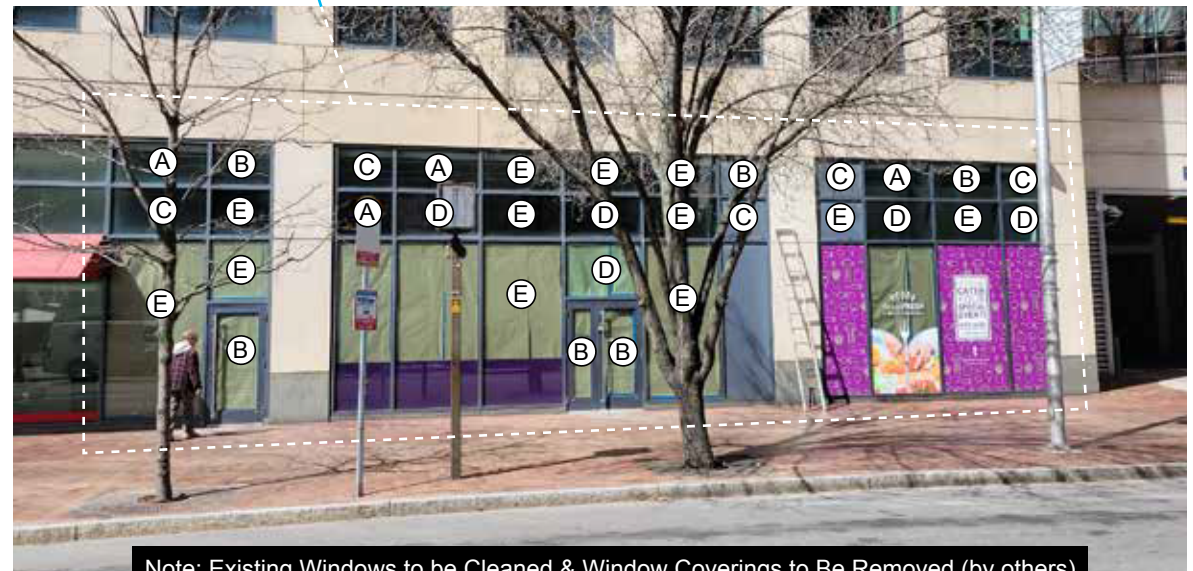
Description:
(Qty-24) Second surface applied window film.
- Solar graphic colored window film.

LogóTypeface:
(Qty-2) Exterior applied white cut vinyl door signage.

Window Graphics:
(Qty-8) Second surface applied hand-painted graphics.
(Qty-1) Second surface applied cut vinyl above door.

Installation:
Cut vinyl by ViewPoint.
Color film by Cornerstone
Hand-painted graphics by Noble Signs

Existing



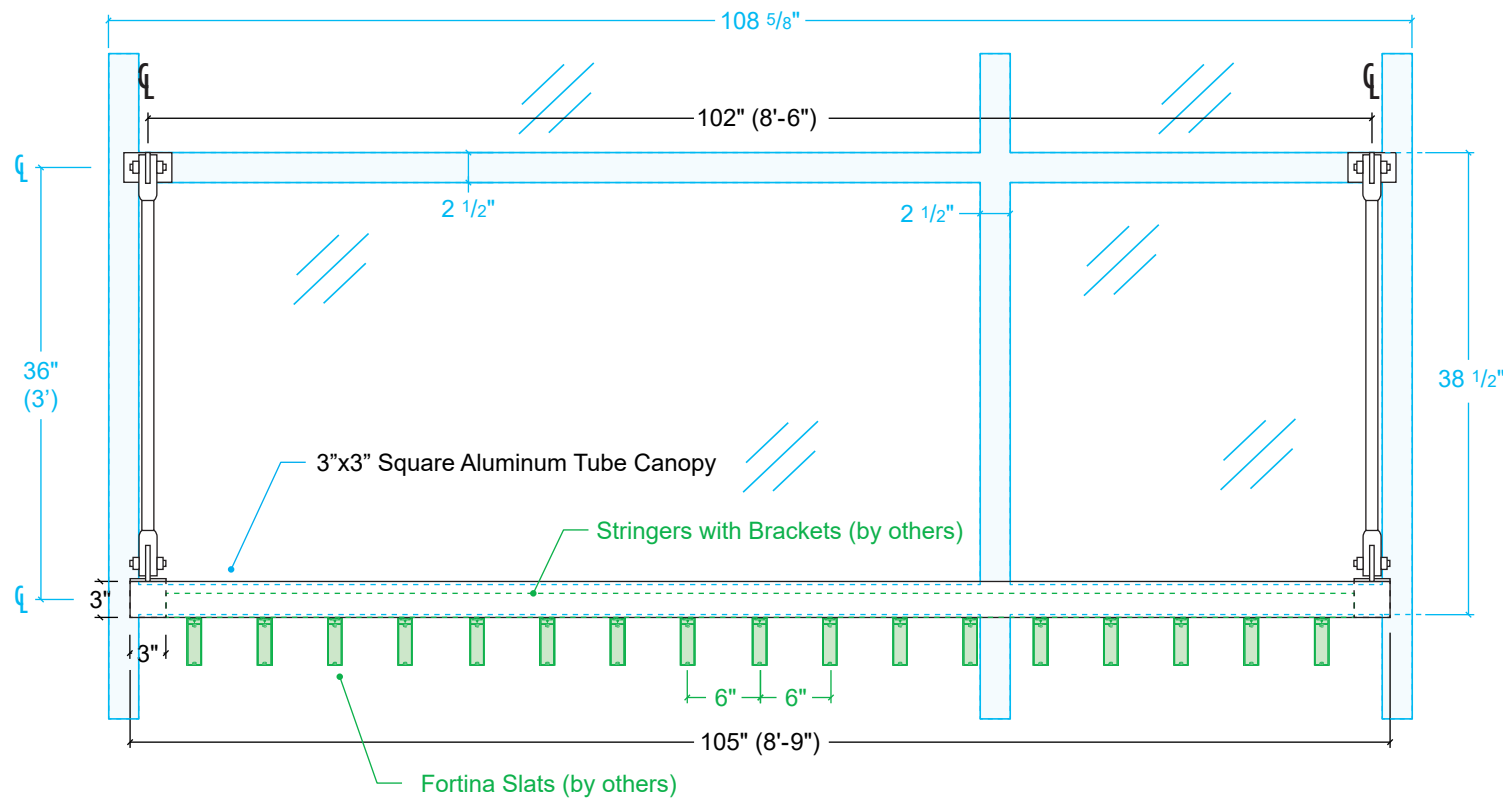
Note: Existing Windows to be Cleaned & Window Coverings to Be Removed (by others)

Job: Life Alive
Location: 415 Main St. Cambridge, MA
Account Manager: Jeff Kwass
File:
Date: 03.09.22 .75
Designer: Steven Mannetta
Revisions: 04.14.22

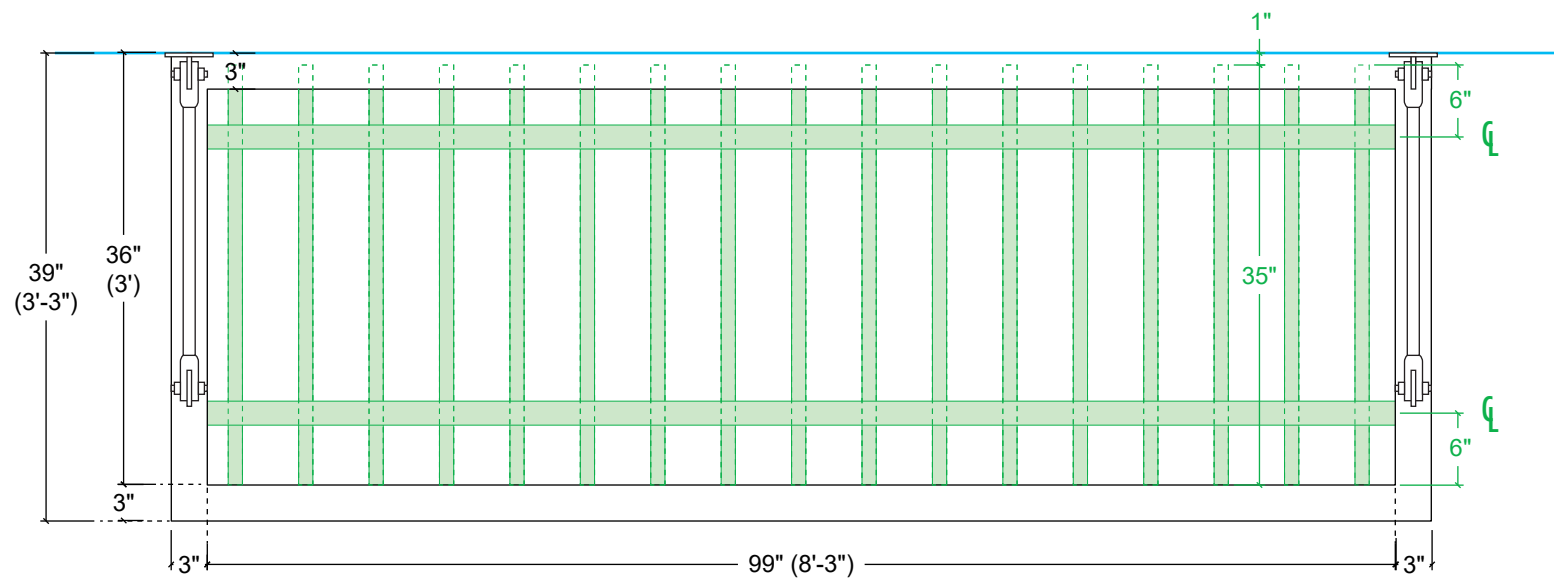
Revisions:
THIS PROPOSAL DRAWING CONTAINS ORIGINAL ELEMENTS
CREATED BY VIEWPOINT SIGN AND AWNING. ALL RIGHTS RESERVED.
UNAUTHORIZED DUPLICATION OR REPRODUCTION IS PROHIBITED.

ViewPoint SIGN AND AWNING 1.508.393.8200
FAX 1.508.393.4244

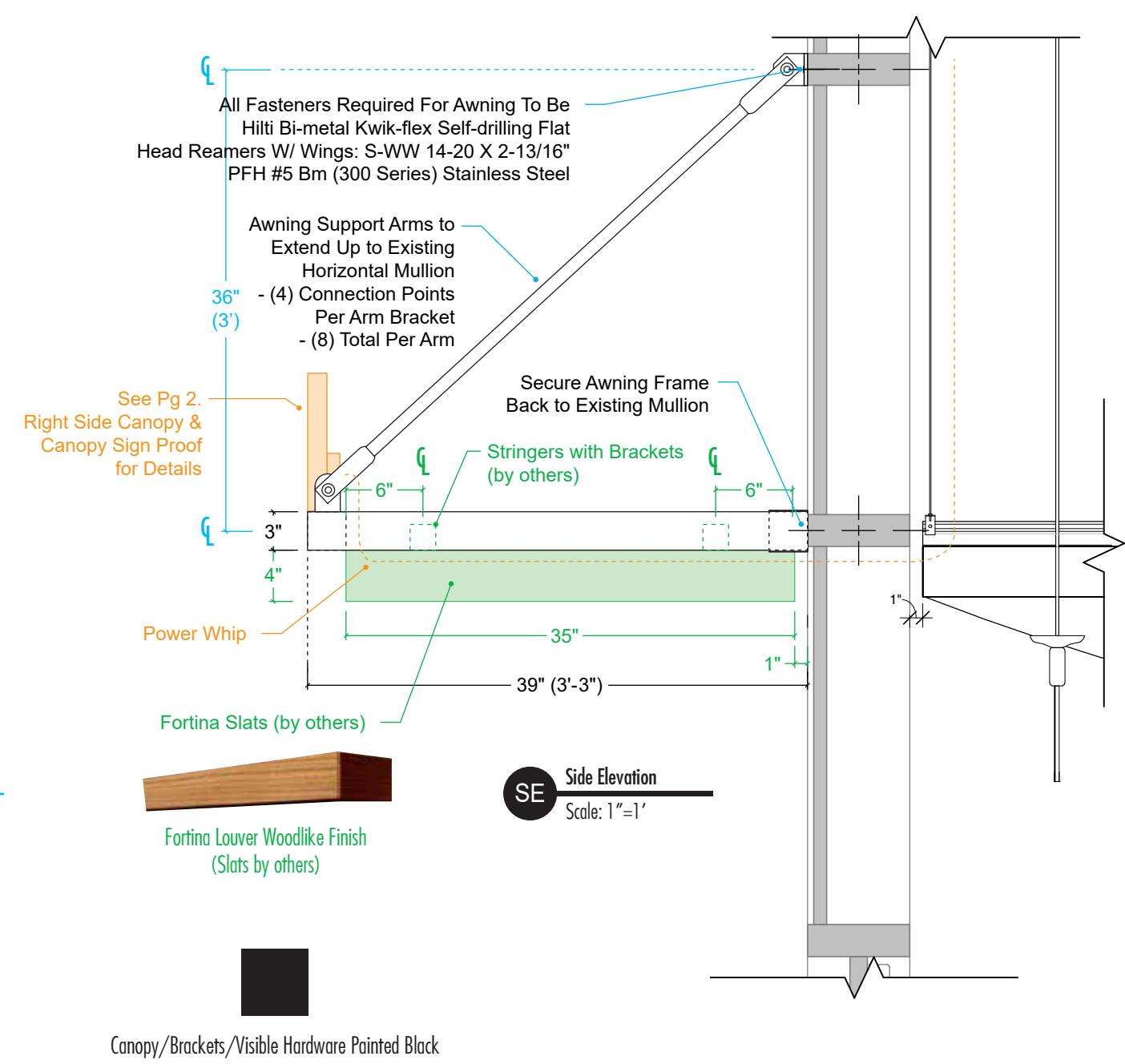
Customer Approval _____ Acct. Manager Approval _____ Production Approval _____

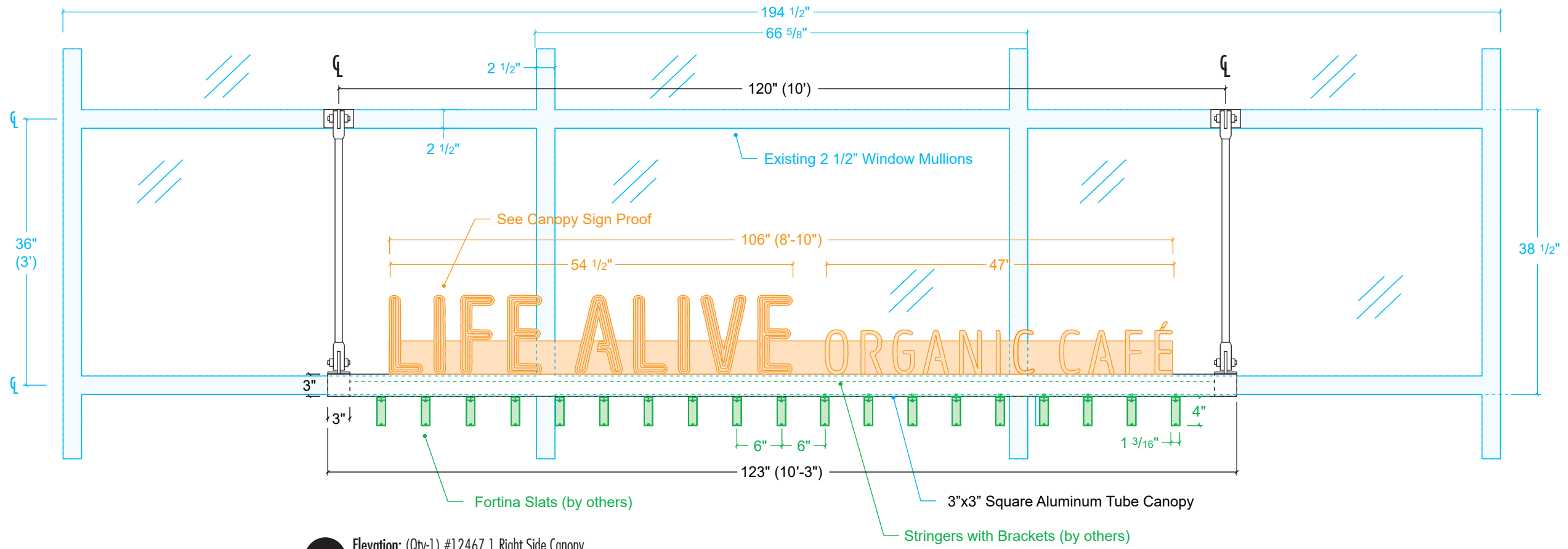


E1 Elevation: (Qty-1) #12467.1 Left Side Canopy
Scale: 3/4"=1'

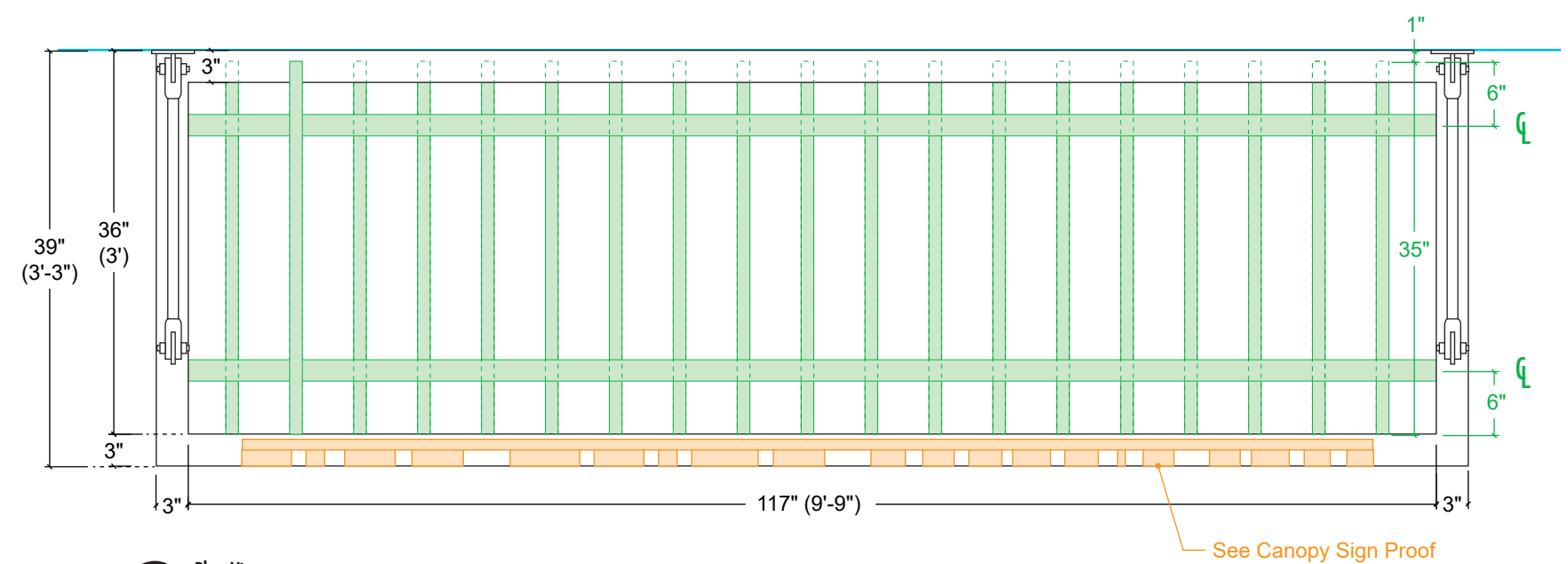


PV Plan View
Scale: 3/4"=1'





E1 Elevation: (Qty-1) #12467.1 Right Side Canopy
Scale: 3/4"=1'



PV Plan View
Scale: 3/4"=1'

Job: Life Alive
Location: 415 Main St. Cambridge, MA
Account Manager: Jeff Kwass
File: LifeAlive_415MainSt-Cambridge_Canopies-Pg2_1b.ai
Date: 11.22.21 R.25 D1.75
Designer: Steven Manetta

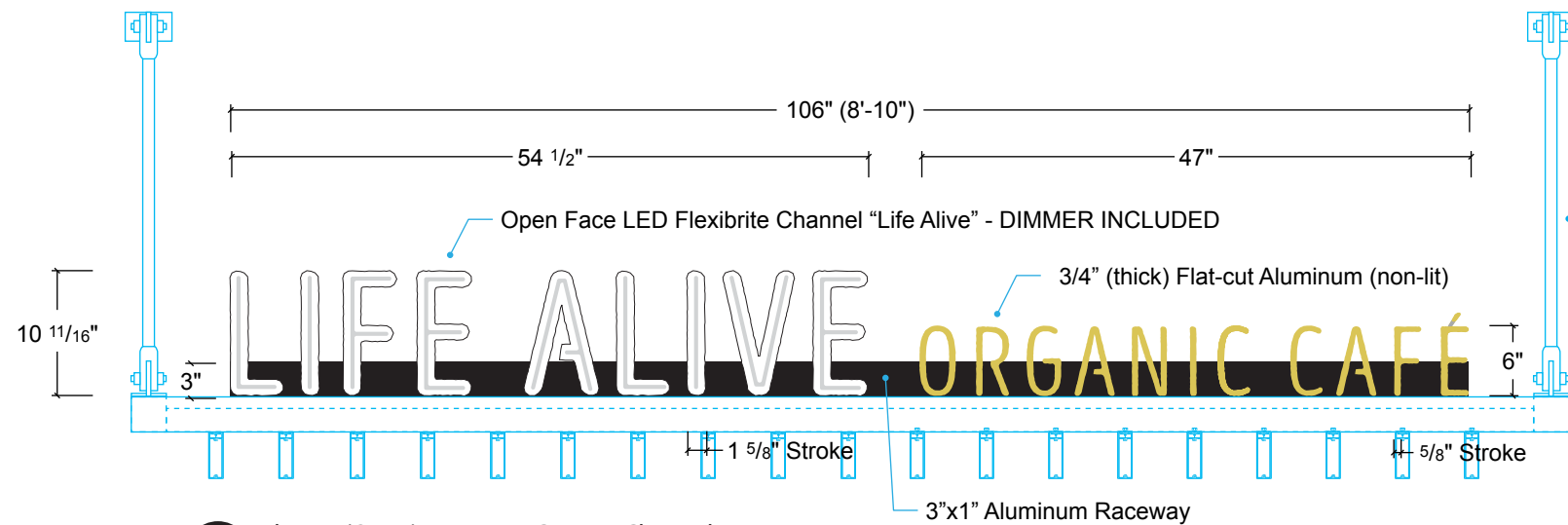
Revisions:
03.07.22 .75
03.09.22 .5

THIS PROPOSAL DRAWING CONTAINS ORIGINAL ELEMENTS CREATED BY VIEWPOINT SIGN AND AWNING. ALL RIGHTS RESERVED. UNAUTHORIZED DUPLICATION OR REPRODUCTION IS PROHIBITED.

ViewPoint SIGN AND AWNING
1.508.393.8200
FAX 1.508.393.4244

Customer Approval
Acct. Manager Approval
Production Approval
TBD/VIF

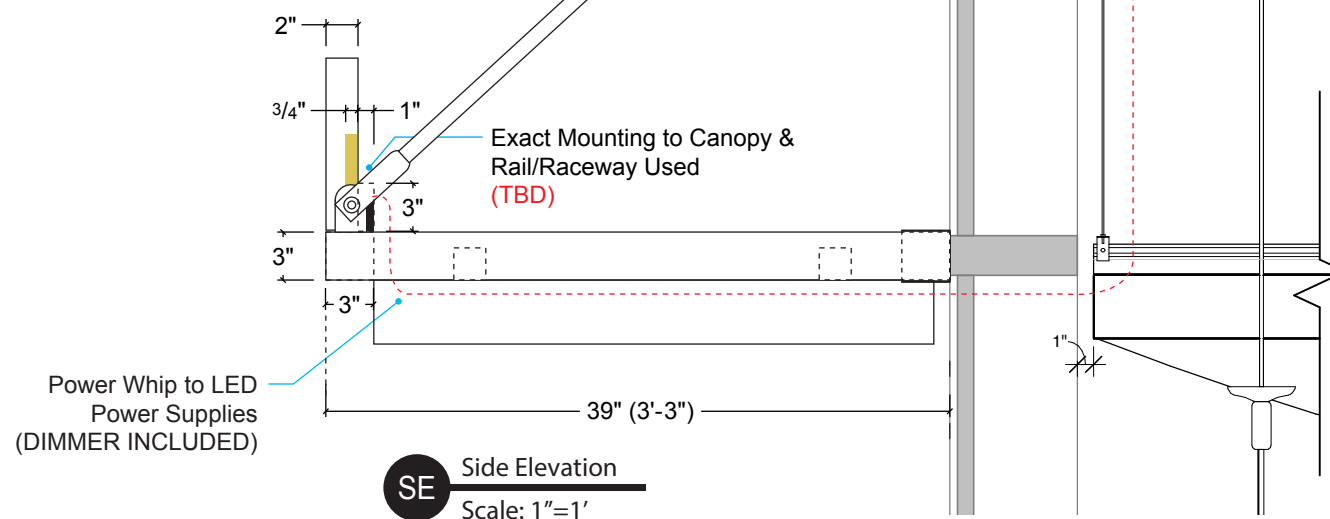
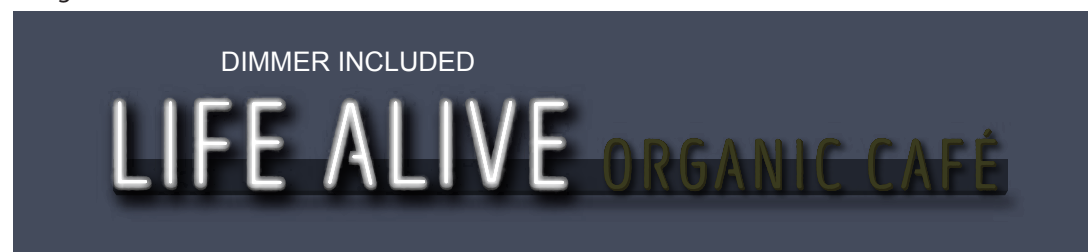
Custom LED Channel Letters Mounted to Top of Canopy



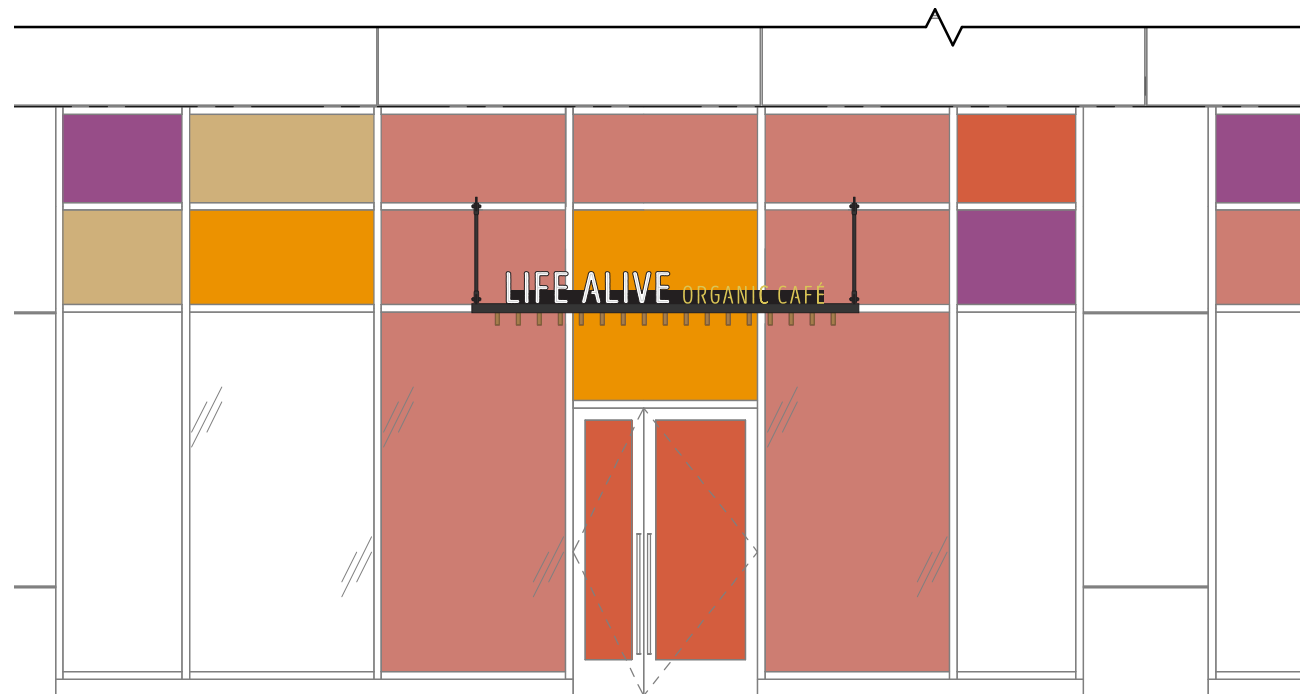
See Canopy Proof Pg2. for Details

E1 Elevation (Qty-1) #12467.1 Custom Channel Letters
Scale: 3/4"=1' Square Footage: 10.6875' x 106" = 7.91 sf.

Nighttime Simulation View



SE Side Elevation
Scale: 1"=1'



L1 Location View
Scale: 3/16"=1'

Description:

(Qty 1) Set of canopy mounted open faced LED striped channel letters and flatcut aluminum.

- "LIFE ALIVE" open face channels;
 - Painted 2" (deep) open faced aluminum channel letters.
 - .04" aluminum returns and .063 aluminum backs.
 - LED striping mounted to face of letter insides - DIMMER INCLUDED
 - Remote LED power supplies located in paige power supply enclosures.
 - Custom aluminum raceway mounted to canopy - mounting (TBD)
- "ORGANIC CAFÉ" Flat-cut Aluminum;
 - Painted 3/4" (thick) flat-cut aluminum letters (non-lit).
 - Stud mounted to custom aluminum raceway.

Logó Typeface:

Supplied by customer and arranged as needed
Increased stroke width as needed for open faced channels.

Colors:

- Life Alive (all sides): - Aluminum Painted White
- Life Alive (LED Stripe): - White
- Organic Café (all sides): - Aluminum Painted to match PMS 458C (golden yellow)
- Raceway/Bracket/HW: - Painted Black to match Canopies

Installation:

By ViewPoint / Power (by others).
This sign is intended to be installed in accordance with the requirements of Article 600 of the National Electrical Code (NEC) and/or other applicable Local Electrical Codes (LEC). This includes proper grounding and bonding of the sign.

Job: Life Alive
Location: 415 Main St. Cambridge, MA
Account Manager: Jeff Kwass
File:

Date: 11.18.21 1.5
Designer: Steven Mannetta

Revisions: 03.09.22 .5
03.16.22 1
03.23.22.25

Revisions: THIS PROPOSAL DRAWING CONTAINS ORIGINAL ELEMENTS
CREATED BY VIEWPOINT SIGN AND AWNING. ALL RIGHTS RESERVED.
UNAUTHORIZED DUPLICATION OR REPRODUCTION IS PROHIBITED.

ViewPoint SIGN AND AWNING 1.508.393.8200
FAX 1.508.393.4244

Customer Approval

Acct. Manager Approval

Production Approval

TBD

CODING NOTES

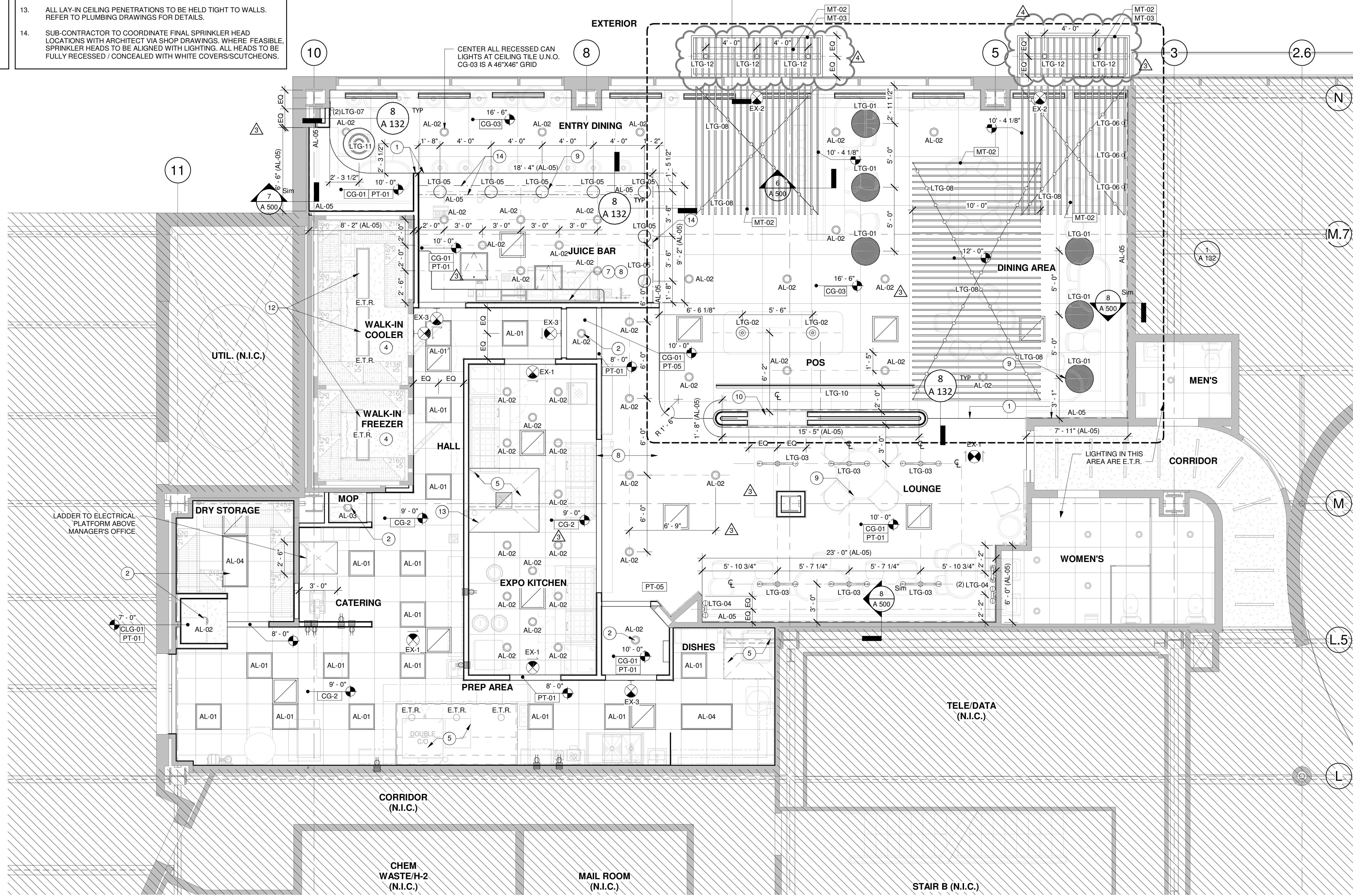
1. ALIGN FINISH FACE OF WALL WITH FINISH FACE OF SOFFIT.
2. CENTER LIGHTING FIXTURE AT CEILING OR ABOVE FIXTURE.
3. ALIGN FINISH FACE OF SOFFITS
4. EXISTING WALK-IN COOLER AND FREEZER.
5. EXHAUST HOOD
6. APPROX LOCATION OF 24"x24" ACCESS PANEL - INTEXFORMS AP24X24. FINAL LOCATIONS TO BE DETERMINED IN FIELD, TO COORDINATE WITH REQUIRED MECHANICAL ACCESS LOCATIONS. ALL MEASURES TO BE TAKEN TO REDUCE VISIBILITY OF PANELS. TO BE PAINTED TO MATCH CEILING.
7. PROVIDE BLOCKING IN CEILING FOR SUSPENDED MENU BOARDS. REFER TO MILLWORK PACKAGE.
8. PROVIDE BLOCKING IN CEILING FOR SUSPENDED LAX SHELVING. REFER TO MILLWORK PACKAGE.
9. PROVIDE BLOCKING IN CEILING FOR DECORATIVE/PENDANT LIGHT FIXTURE. REFER TO LIGHTING/ARTWORK PACKAGE.
10. LED STRIP LIGHT IN OCULUS PERIMETER. SEE A300 FOR DETAILS.
11. DECORATIVE MILLWORK VESTIBULE PANELS. REFER TO MILLWORK PACKAGE.
12. EXISTING OVERHEAD LIGHTS IN WALK-IN COOLER/FREEZER. G.C. TO RELAMP IF REQUIRED.
13. REFER TO STRUCTURAL FOR EXHAUST HOOD UNISTRUT SUPPORT.
14. AL-05 STRIP LIGHT BEHIND JUICE BAR TO BE INTEGRATED INTO MILLWORK SHELVING. COORDINATE PLACEMENT WITH MILLWORK VENDOR/PACKAGE.

GENERAL NOTES

1. ALL INTERIOR FIXTURES AND LAMPS FURNISHED & INSTALLED BY G.C.
2. KITCHEN EXHAUST HOODS PROVIDED BY KITCHEN VENDOR AND INSTALLED BY GC.
3. ANSUL BOX & FIRE SUPPRESSION SYSTEM PROVIDED BY AND INSTALLED BY HS. HOOD INTERLOCK BY GC. ELECTRICAL CONNECTION BY GC. RE.ELEC.
4. MENU BOARD ASSEMBLY PROVIDED BY OTHERS, INSTALLED BY GC.
5. PROVIDE BLOCKING ABOVE MENU BOARD ASSEMBLY FOR INSTALLATION.
6. ALL HEIGHTS ARE TO BOTTOM OF FIXTURE U.N.O.
7. ALL DIMENSION ARE TO THE FACE OF FRAMING, OR CENTERLINE OF FIXTURE U.N.O.
8. SEE ELECTRICAL DRAWINGS FOR SHATTER RESISTANT LAMP LOCATIONS.
9. ALL EMERGENCY FIXTURES, LIGHTS, AND STROBES SHALL BE ALIGNED OR CENTERED ON WALLS.
10. FULL CERAMIC TILE COURSING SHALL TAKE PRECEDENT OVER ANY CEILING/HEADER DIMENSION INDICATED IN THE PLAN, REFER TO A151.
11. ALL CONDUIT AND PIPES TO BE RUN ABOVE CEILINGS. CONSULT WITH ARCHITECT SHOULD ANY CONFLICTS ARISE.
12. BATT INSULATION TO BE INSTALLED ABOVE RESTROOM(S) CEILING(S).
13. ALL LAY-IN CEILING PENETRATIONS TO BE HELD TIGHT TO WALLS. REFER TO PLUMBING DRAWINGS FOR DETAILS.
14. SUB-CONTRACTOR TO COORDINATE FINAL SPRINKLER HEAD LOCATIONS WITH ARCHITECT VIA SHOP DRAWINGS. WHERE FEASIBLE SPRINKLER HEADS TO BE ALIGNED WITH LIGHTING. ALL HEADS TO BE FULLY RECESSED / CONCEALED WITH WHITE COVERS/SCUTCHEONS.

LIGHTING FIXTURE SCHEDULE

TYPE	QTY	MODEL	MANUFACTURER	DESCRIPTION	INSTALL COMMENTS
AL-01	16	WRTL-G-24"-5000LM-AFL-30K	LITHONIA	2x2 LED TROFFER	RECESSED
AL-02	43	RL4069S1EWH-H245ICAT-27K	HALO	RECESSED FIXED DOWNLIGHT	RECESSED
AL-03	2	VF100 SERIES - 8411-16L-8027 (2700K)-WIDE-MW (WHITE)-CL	LF ILLUMINATION LLC	RECESSED FIXED DOWNLIGHT - KITCHEN	RECESSED
AL-04	2	WRTL-G-48"-5000LM-AFL-30K	LITHONIA	2x4 LED TROFFER	RECESSED
AL-05	11	D1-24V-TE-NBLX-27- (VARIABLE LENGTH - SEE PLAN FOR DIMENSIONS)	DIODE LED	BLAZE NEON 24V LED STRIP LIGHT	SURFACE MOUNTED
EX-1	4	RELXTE-1-R-C-W-EM W/BATTERY BACK-UP	BEST	EXIT SIGN - EDGE LIT	RECESSED
EX-2	2	ELXTEU-1-R-C-B-EM W/BATTERY BACK-UP	BEST	EXIT SIGN - EDGE LIT	SUSPENDED
EX-3	4	EXZTEU-1-R-W-EM W/BATTERY BACK-UP	BEST	EXIT SIGN	WALL-MOUNTED
LTG-01	6	Z2 BLONDE SISAL NET PENDANT	GLOBAL LIGHTING	SISAL NET, TEA DYED INFINITE	SUSPENDED
LTG-02	2	AMBER PENDANT	ANTHROPOLOGIE	COLOR: 025	SUSPENDED
LTG-03	6	RGN982551	LIGHTOLOGY	MATTE WHITE SHADE, POLISHED NICKEL BODY FINISH	SUSPENDED
LTG-04	3	HAPPY SCONCE - 15-1144NB	BURKE DECOR	BRASS	WALL-MOUNTED
LTG-05	7	CHROMA BUBBLE PENDANT	ANTHROPOLOGIE	COLOR: 095; GLASS; BRASS	SUSPENDED
LTG-06	3	GROVE FLUSH LIGHT	WORLEYS LIGHTING	WALNUT/POLISHED NICKEL	WALL-MOUNTED
LTG-07	2	CASSEY SCONCE	LULU AND GEORGIA	CANE RATTAN, GLASS, NATURAL	WALL-MOUNTED
LTG-08	75	EXHIBITOR SERIES EXWH-24-WW-G19-C	TOKISTAR LIGHTING	EXTERIOR STRING LIGHTING	SUSPENDED
LTG-10	1	FINO-CLG-GRID-A16-6-2700-HW-120/277-186"-CON-0-10V	AMERLUX	CEILING MOUNTED WALL WASHER	15'-6" L. CENTERED ON OCULUS WALL
LTG-11	1	TBD / PENDANT	TBD	TBD	SUSPENDED
LTG-12	5	WACP229891	WAC LIGHTING	5" LED CAN LIGHT - ETL WET LISTED - FINISH: BLACK	SURFACE MOUNTED



1 REFLECTED CEILING PLAN
SCALE: 1/4" = 1'-0"

CONSULTANT

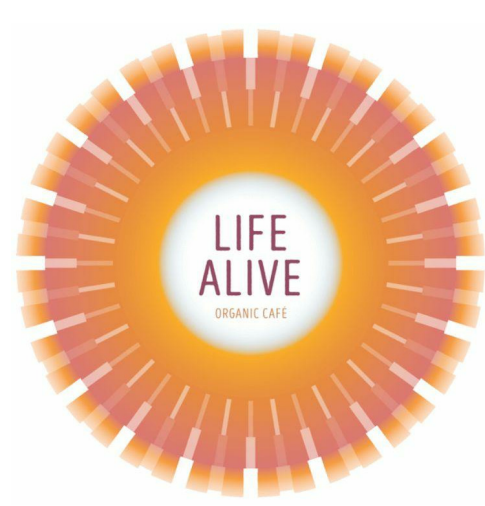
SEAL

ISSUES & REVISIONS

10/01/2021	CD SET
10/20/2021	DEMOLITION PERMIT
10/25/2021	PERMIT SET

REV DATE	ISSUED
1	12/20/21 IFC / REV-1
3	02/18/22 REV-3
4	04/14/22 REV-4

OWNER/CLIENT
LIFE ALIVE



PROJECT
KENDALL SQUARE

415 MAIN STREET,
CAMBRIDGE, MA 02142

DRAWING TITLE
REFLECTED CEILING PLAN

DRAWING INFORMATION
Job Number: 221078
Checked By: KTB
Drawn By: CMD
DRAWING NUMBER

A
130

Copyright © 2017 by BKA Architects, Inc. The architectural plans, drawings, designs, specifications and other arrangements on this sheet are and shall remain the property of BKA Architects, Inc. No part thereof shall be copied, disseminated or otherwise used in connection with any work or project, other than the specified project for which they have been prepared and developed, without the express knowledge and written consent of BKA Architects, Inc. C:\Users\Local21079_LifeAlive_Kendall Square_mhama\nt

REVISION 3 02/18/2022

4/14/2022 2:38:58 PM
 Copyright © 2017 by BKA Architects, Inc. The architectural plans, drawings, designs, specifications and other arrangements on this sheet are and shall remain the property of BKA Architects, Inc. No part thereof shall be copied, disseminated to others, or used in connection with any work or project, other than the specified project for which they have been prepared and developed, without the express knowledge and written consent of BKA Architects, Inc.
 G:_New Locals\21078_LifeAlive_Kendall Square_mtaga.rvt

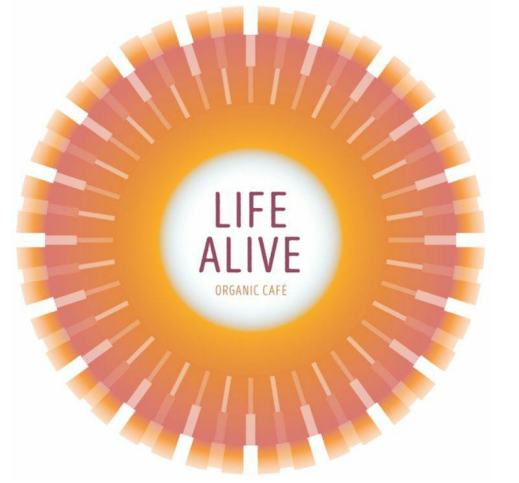
CONSULTANT

SEAL

ISSUES & REVISIONS

REV	DATE	ISSUED
1	10/01/2021	CD SET
2	10/20/2021	DEMOLITION PERMIT
3	10/25/2021	PERMIT SET
1	12/20/21	IFC / REV-1
3	02/18/22	REV-3
4	04/14/22	REV-4

OWNER/CLIENT
LIFE ALIVE



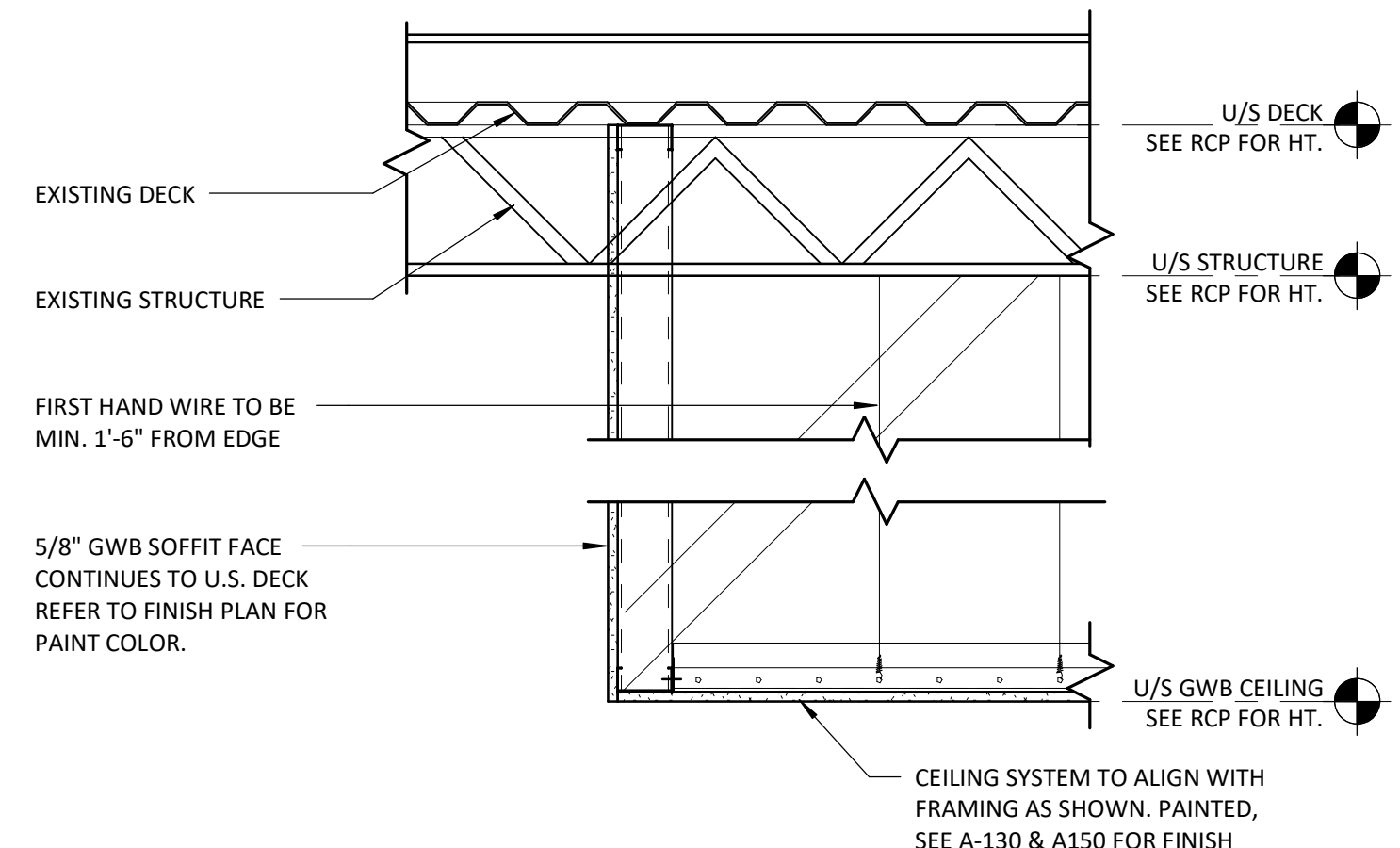
PROJECT
KENDALL SQUARE

415 MAIN STREET,
CAMBRIDGE, MA 02142

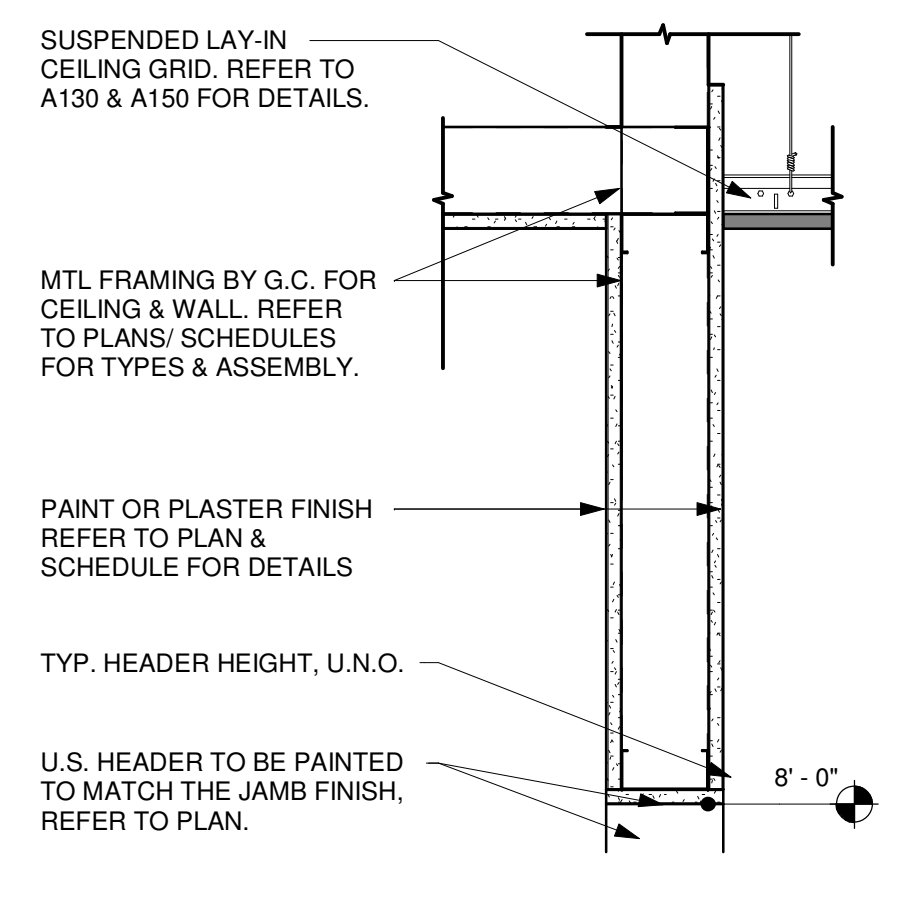
DRAWING TITLE
CEILING DETAILS

DRAWING INFORMATION
 Job Number: 221078
 Checked By: KTB
 Drawn By: CMD
 DRAWING NUMBER

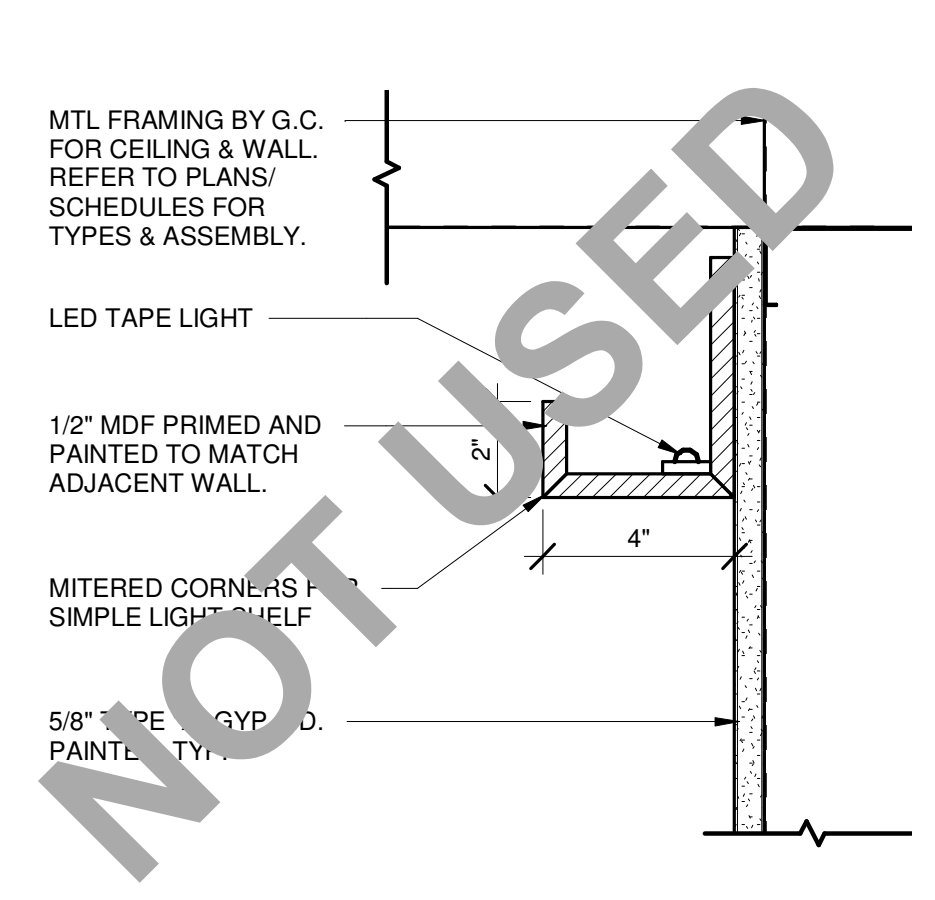
REVISION 3 02/18/2022
A
132



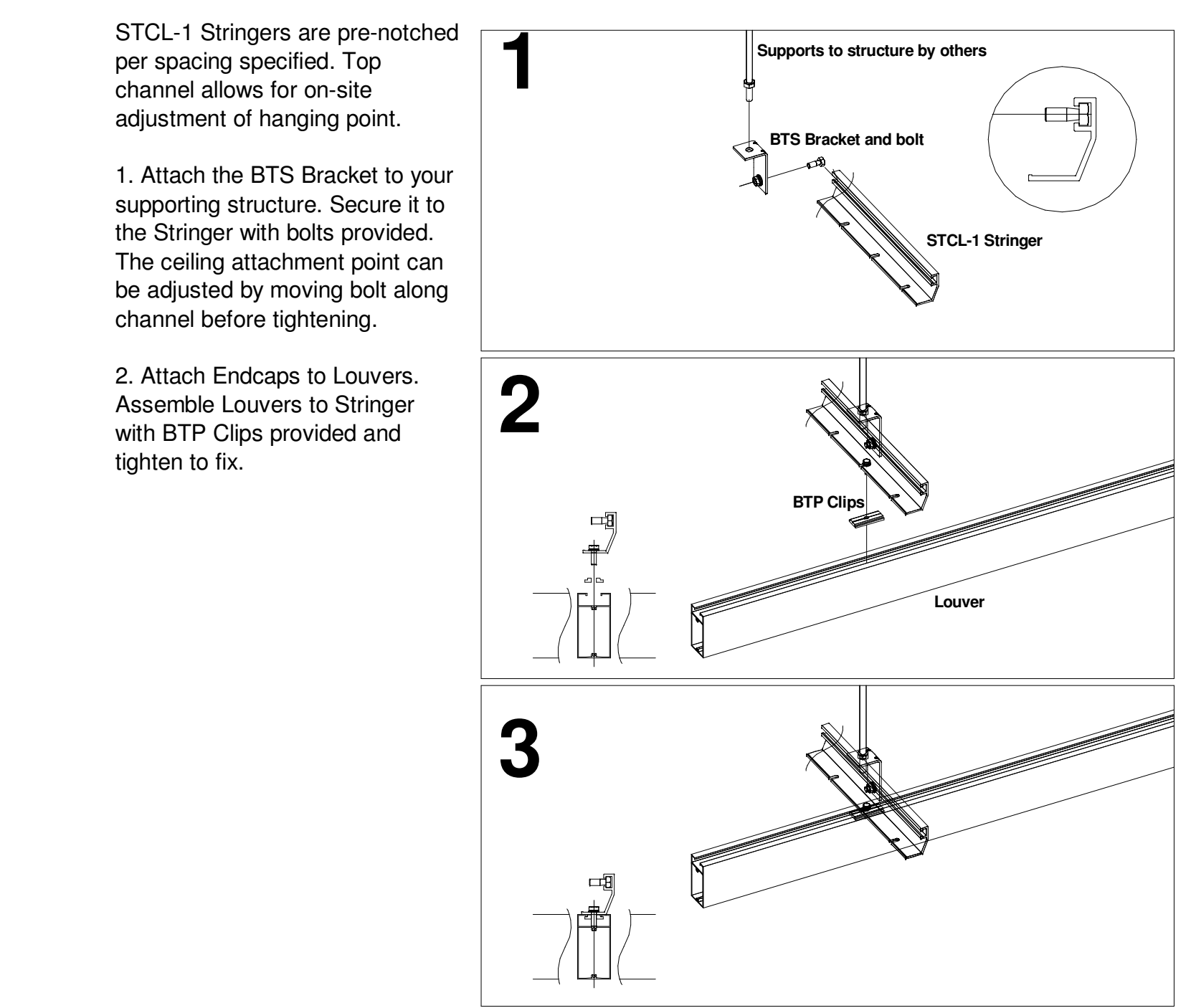
8 SOFFIT DETAIL UP TO DECK
SCALE: 1" = 1'-0"



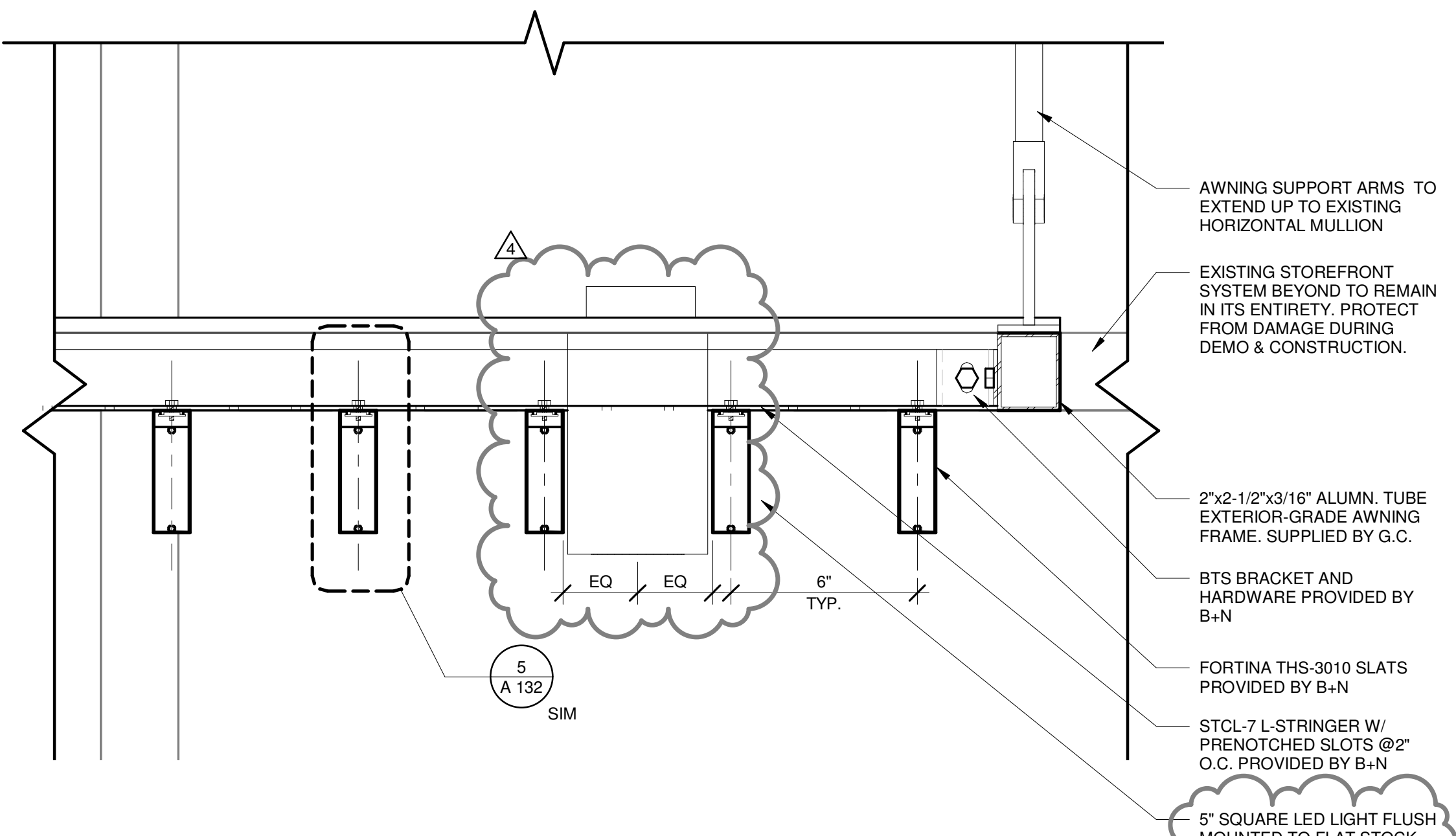
7 TYP. HALLWAY HEADER DETAIL
SCALE: 1 1/2" = 1'-0"



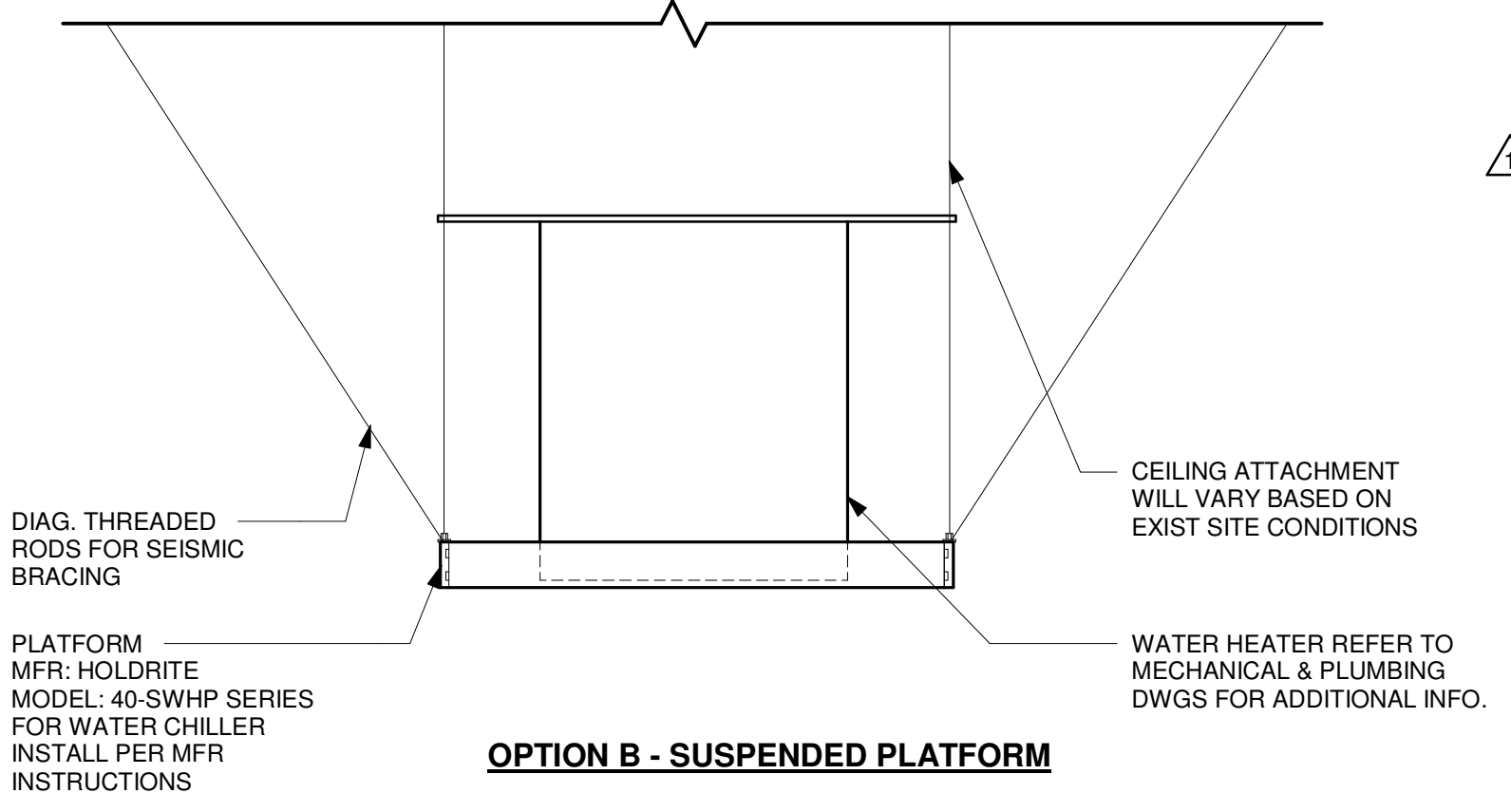
6 TYP. LED COVE LIGHT DETAIL
SCALE: 3" = 1'-0"



5 STRINGER MOUNTED FORTINA LOUVERS
SCALE: 12" = 1'-0"

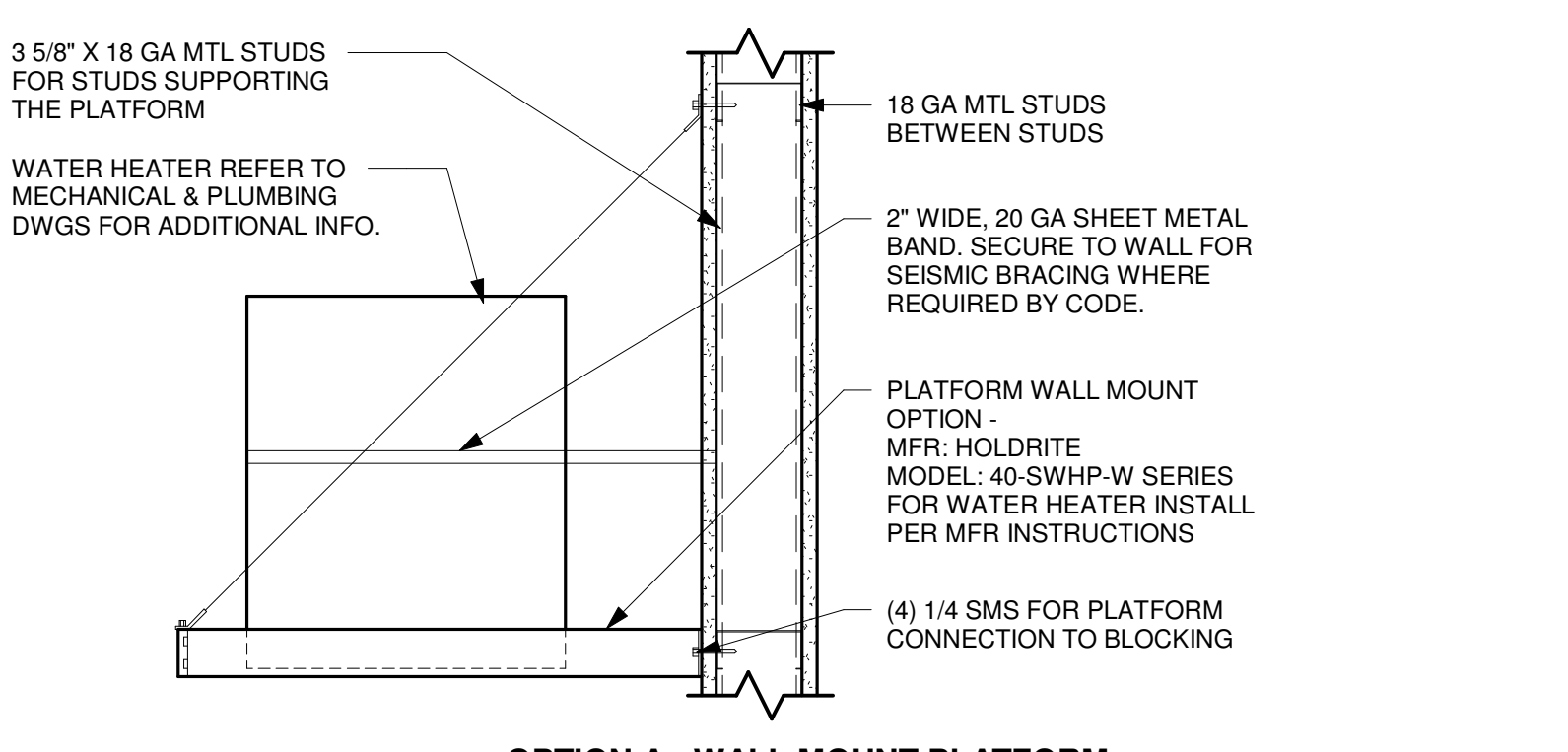


4 SECTION DETAIL - SLAT CEILING EXTERIOR
SCALE: 3" = 1'-0"

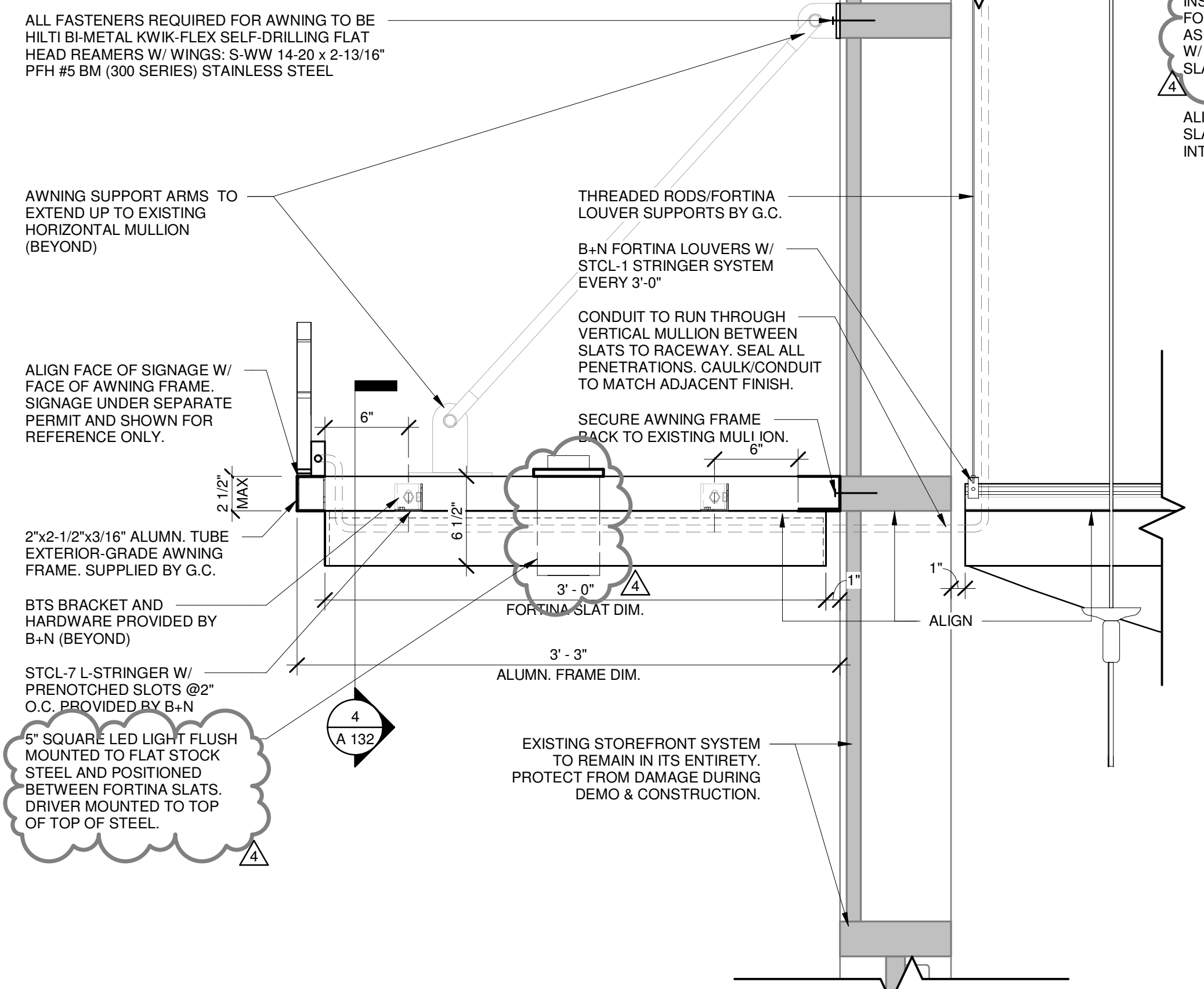


OPTION B - SUSPENDED PLATFORM

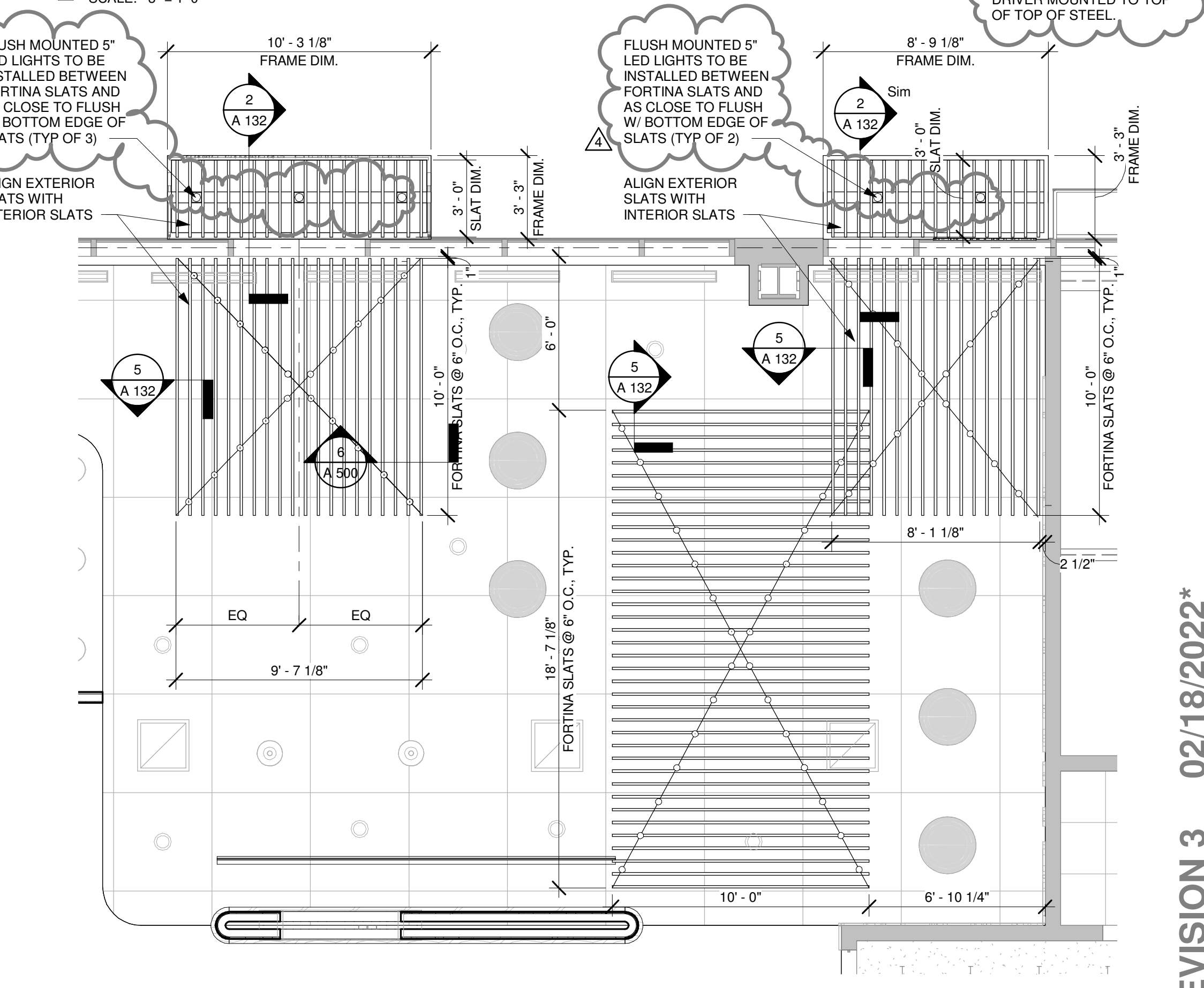
- NOTES:**
- GC TO COORD LOCATION W/ MEP'S.
 - GC TO PROVIDE ACCESS PANEL WHENEVER HEATER IS ABOVE HARD LID CEILING OR IN WALL CAVITY



OPTION A - WALL MOUNT PLATFORM



2 SECTION DETAIL - SLAT CEILING TO AWNING
SCALE: 1 1/2" = 1'-0"



1 METAL SLAT CEILING PLAN
SCALE: 1/4" = 1'-0"

3 WATER HEATER MOUNTING DETAIL
SCALE: 1 1/2" = 1'-0"