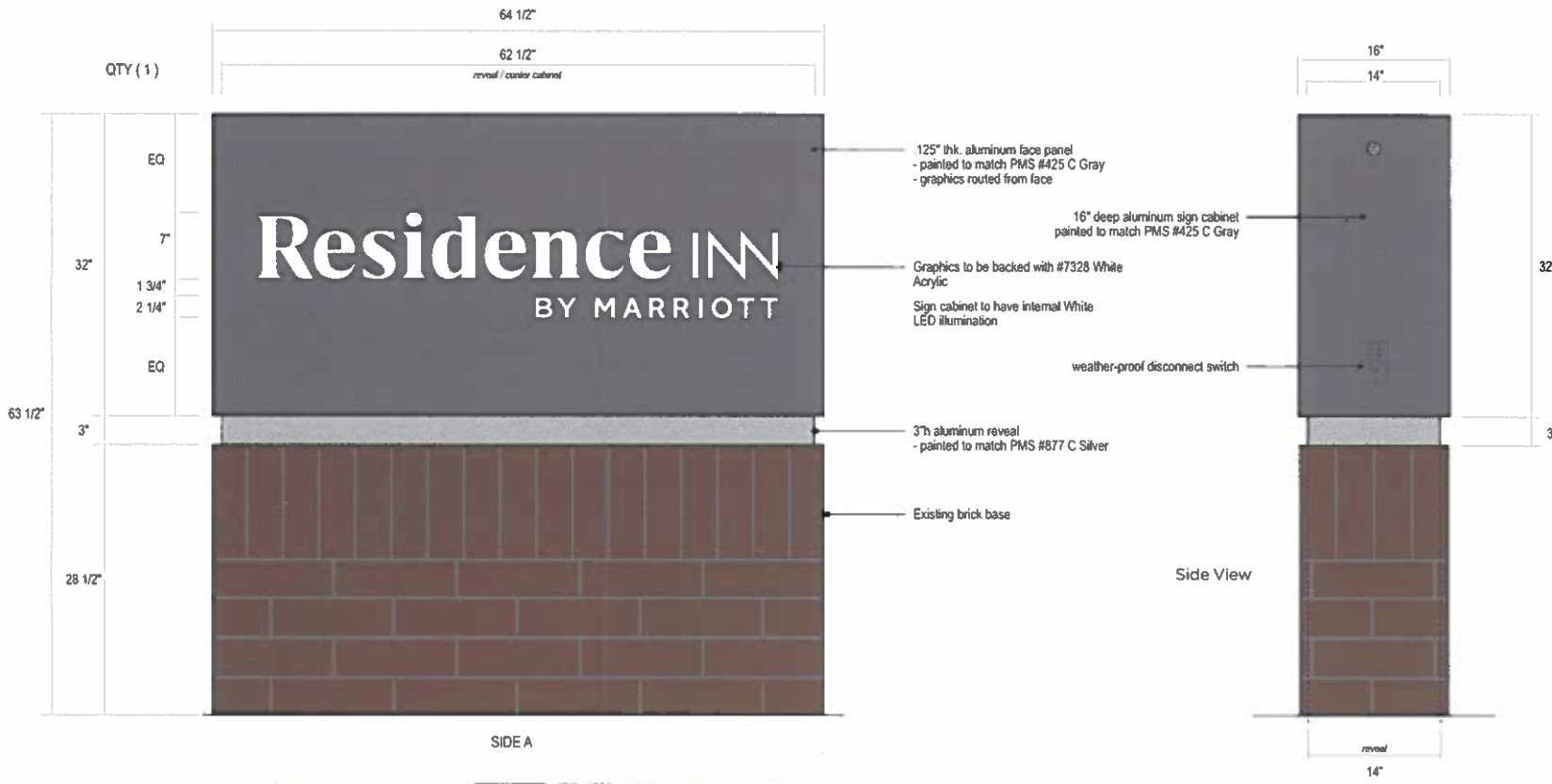


MONUMENT ID SIGNAGE - Single Face Monument



SIDE A

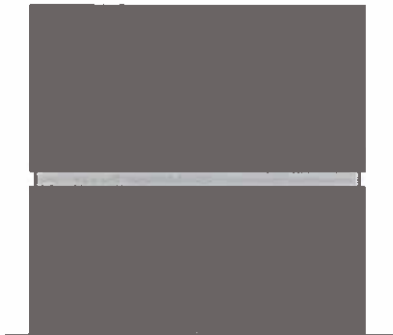
Side View

Monument ID Sign

Scale: 1" = 1'-0"

COLOR KEY:

- to match PMS #425C Gray
- to match PMS #877C Silver
- #7328 White Acrylic



SIDE B

Back Elevation

Scale: not to scale

Residence INN
BY MARRIOTT

CAMBRIDGE, MA

CLIENT APPROVAL

- Approved Approved As Noted
 Revise and Resubmit
 Please Check Appropriate Grids

By: [Signature]
 Date: 5/23/19

GSI USE ONLY

JOB # **0180180**

Designer: Jason Carroll

Sales Representative: David Moore

Drawing Date: 12-17-18 Type: SD

Rev #1: 3-27-19 Rev #3: -

Rev #2: 5-6-19 Rev #4: -

GSS# **000-0-000**

File Name: Monument ID Sign

File Location: Drawings/I thru Q/Marriott/
Residence Inn - Cambridge/Exterior Signage

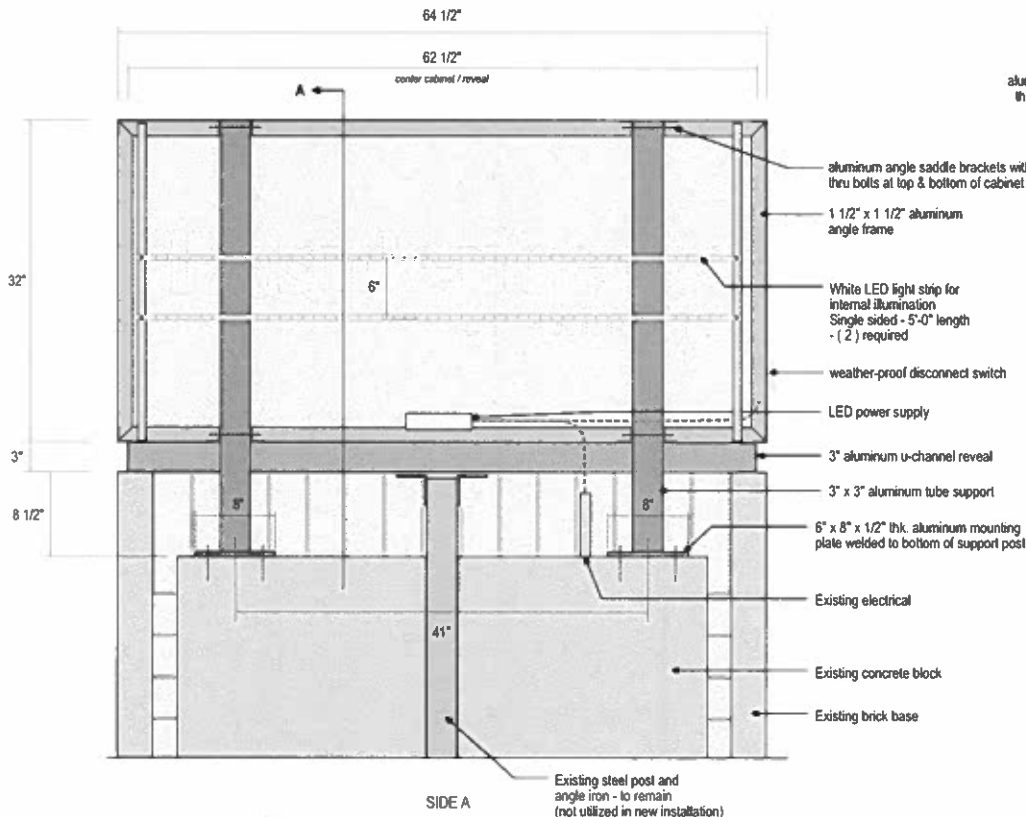
All drawings, designs, digital files, photos, illustrations and imagery contained or represented herein are the sole property of GRAPHIC SYSTEMS INTERNATIONAL, INC. and are not to be copied, distributed or utilized in part or whole without the written permission of Graphic Systems.

PAGE #

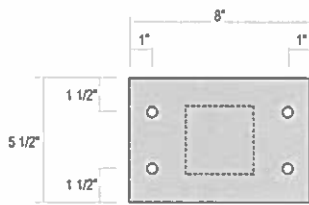


Graphic Systems International, Inc.
 7 Lockheed Court
 Greensboro, North Carolina USA 27409
 800.779.2891 / 336.662.8490 fax
www.gsi-signage.com

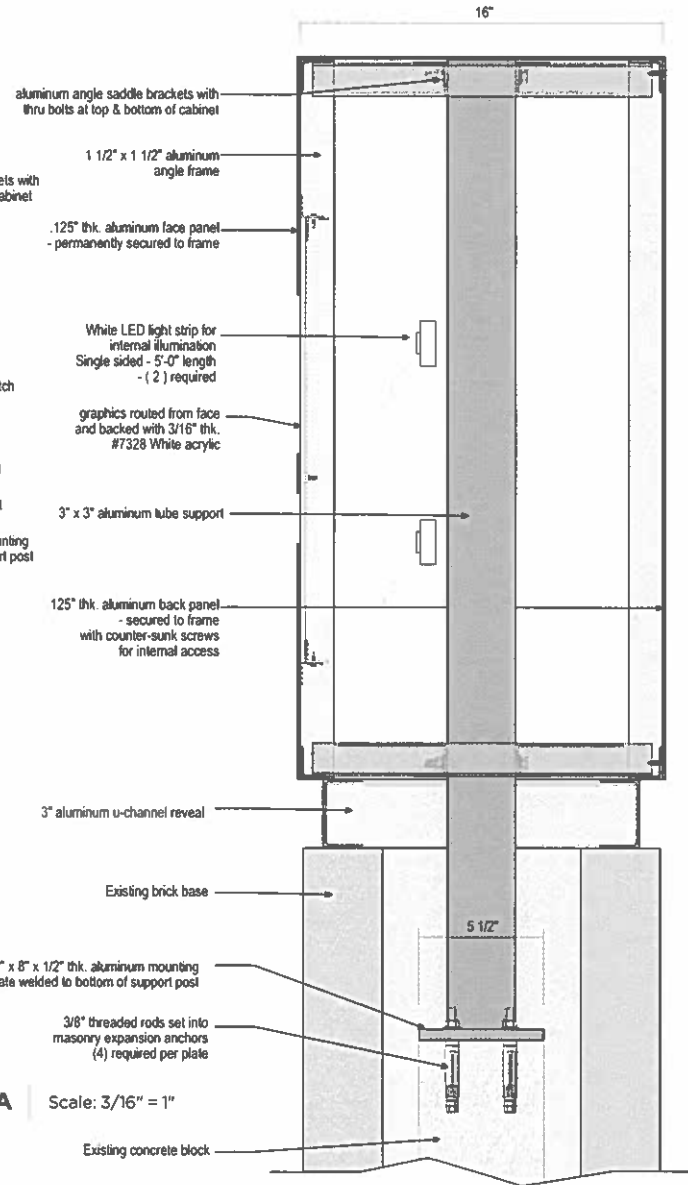
MONUMENT ID SIGNAGE - Single Face Monument



Monument ID Sign | Scale: 1" = 1'-0"



Mounting Plate | Scale: 3/16" = 1"



Section Detail A | Scale: 3/16" = 1"

Residence INN
BY MARRIOTT

CAMBRIDGE, MA

CLIENT APPROVAL

Approved Approved As Noted
 Revise and Resubmit
Please Check Appropriate Circle

By: *[Signature]*
Date: 5/23/19

GSI USE ONLY

JOB # 0180180

Designer: Jason Carroll

Sales Representative: David Moore

Drawing Date: 12-17-18 Type: SD

Rev #1: 3-27-19 Rev #3:

Rev #2: 5-6-19 Rev #4:

GSS # 000-0-000

File Name: Monument ID Sign

File Location: Drawings/1 thru Q/Marriott/
Residence Inn - Cambridge/Exterior Signage

All drawings, designs, digital files, photos, illustrations and imagery contained or represented herein are the sole property of GRAPHIC SYSTEMS INTERNATIONAL, INC. and are not to be copied, distributed or utilized in part or whole without the written permission of Graphic Systems.

PAGE #



Graphic Systems International, Inc.
7 Lockheed Court
Greensboro, North Carolina USA 27409
800.779.2891 / 336.662.8690 fax
www.gsi-signage.com

LOGO WALL PLAQUE

QTY (1)



1 1/2" deep fabricated aluminum sign panel
- painted to match PMS #425 C Gray
- graphics routed from face

1/4" thk. aluminum plate graphics
- precision cut
- painted MAP #42202 Natural White
- installed flush to face

COLOR KEY:

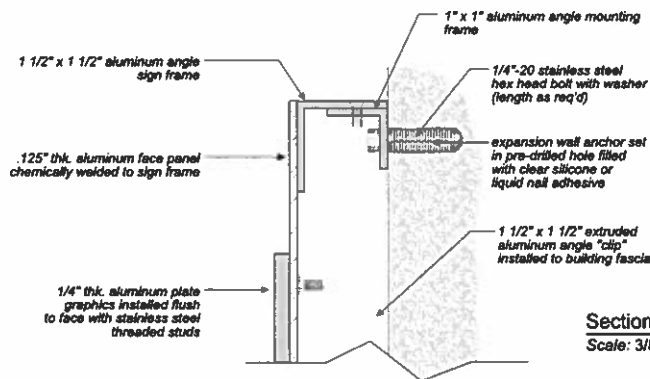
- to match PMS #425C Gray
- MAP #42202 Natural White



Side View

Logo & Address Wall Plaque

Scale: 1/8" = 1"



Section Detail
Scale: 3/8" = 1"

Section Detail

Scale: 1/4" = 1"



Residence INN
BY MARRIOTT

CAMBRIDGE, MA

CLIENT APPROVAL

Approved Approved As Noted
 Revise and Resubmit
Please Check Approver Code

By: *[Signature]*
Date: 5/23/19

GSI USE ONLY

JOB # 0180180

Designer: Jason Carroll

Sales Representative: David Moore

Drawing Date: 12-17-18 Type: SD

Rev #1: 3-27-19 Rev #3: -

Rev #2: 5-22-19 Rev #4: -

GSS# 000-0-000

File Name: Logo & Address Wall Plaque - Revised

File Location: Drawings/ thru Q/Marriott/
Residence Inn - Cambridge/Exterior Signage

All drawings, designs, digital files, photos, illustrations and imagery contained or represented herein are the sole property of GRAPHIC SYSTEMS INTERNATIONAL, INC. and are not to be copied, distributed or utilized in part or whole without the written permission of Graphic Systems.

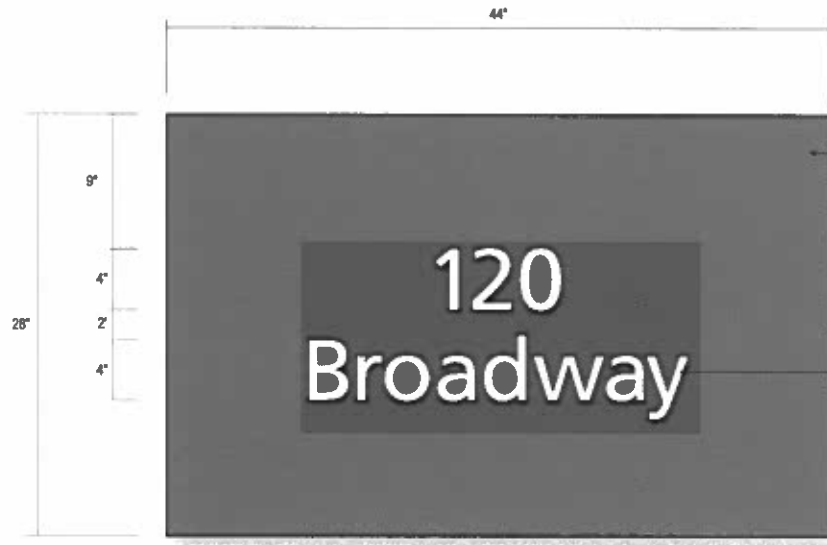
PAGE #



Graphic Systems International, Inc.
7 Lockheed Court
Greensboro, North Carolina USA 27409
800.779.2891 / 336.662.8699 fax
www.gsi-signage.com

ADDRESS WALL PLAQUE

QTY (1)



1 1/2" deep fabricated aluminum sign panel
- painted to match PMS #425 C Gray
- graphics routed from face

1/4" thk. aluminum plate graphics
- precision cut
- painted MAP #42202 Natural White
- installed flush to face

COLOR KEY:

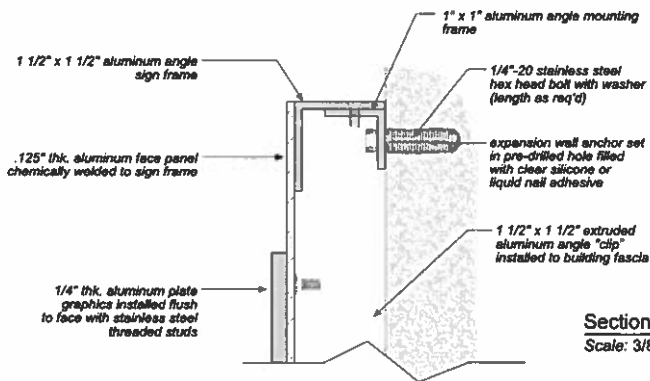
- to match PMS #425C Gray
- MAP #42202 Natural White



Side View

Logo & Address Wall Plaque

Scale: 1/8" = 1"



Section Detail
Scale: 3/8" = 1"

Section Detail

Scale: 1/4" = 1"

Residence INN
BY MARRIOTT

CAMBRIDGE, MA

CLIENT APPROVAL

- Approved Approved As Noted
 Revise and Resubmit
Please Check Appropriate Circle

By: *[Signature]*
 Date: 5/23/19

GSI USE ONLY

JOB # 0180180

Designer: Jason Carroll

Sales Representative: David Moore

Drawing Date: 12-17-18 Type: SD

Rev #1: 3-27-19 Rev #3: -

Rev #2: 5-22-19 Rev #4: -

GSS # 000-0-000

File Name: Logo & Address Wall Plaque - Revised

File Location: Drawings/I thru Q/Marriott/
 Residence Inn - Cambridge/Exterior Signage

All drawings, designs, digital files, photos, illustrations and imagery contained or represented herein are the sole property of GRAPHIC SYSTEMS INTERNATIONAL, INC. and are not to be copied, distributed or utilized in part or whole without the written permission of Graphic Systems.

PAGE #



Graphic Systems International, Inc.
 7 Lockheed Court
 Greensboro, North Carolina USA 27409
 800.779.2891 / 336.662.8690 fax
 www.gsi-signage.com