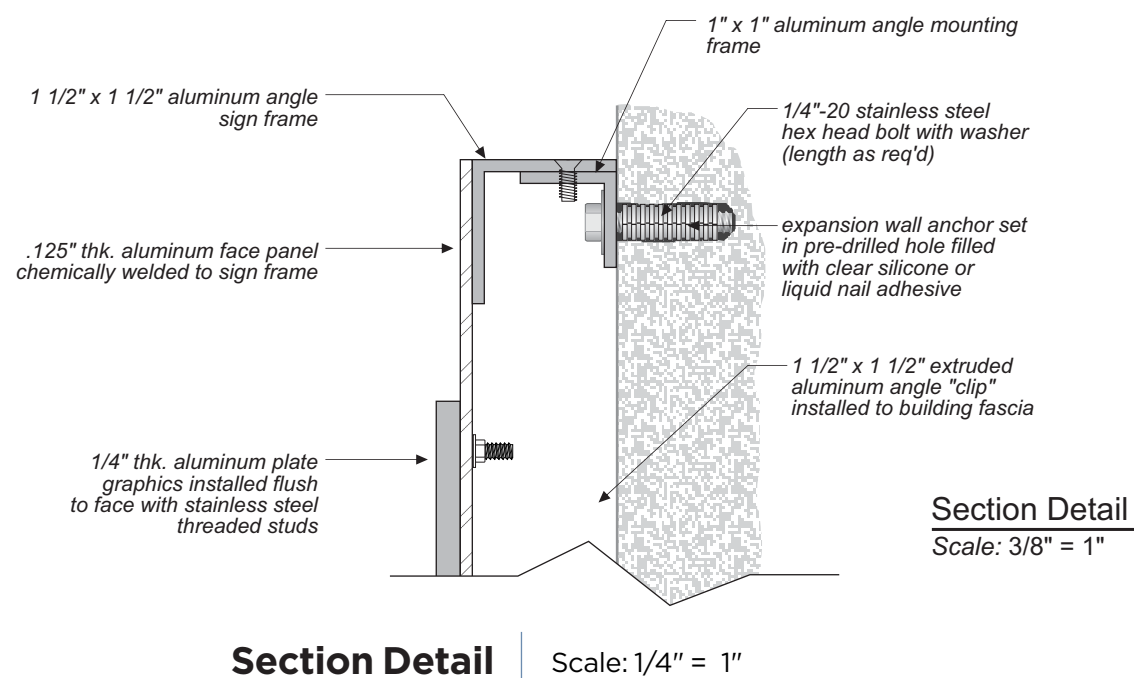


Logo & Address Wall Plaque | Scale: 1/8" = 1'-0"



Residence INN
BY MARRIOTT

CAMBRIDGE, MA

CLIENT APPROVAL

- Approved Approved As Noted
 Revise and Resubmit
Please Check Appropriate Circle

By: _____

Date: _____

GSI USE ONLY

JOB # 0180180

Designer: Jason Carroll

Sales Representative: David Moore

Drawing Date: 12-17-18 Type: SD

Rev #1: 3-27-19 Rev #3: -

Rev #2: - Rev #4: -

GSS# 000-0-000

File Name: Logo & Address Wall Plaque

File Location: Drawings/I thru Q/Marriott/
Residence Inn - Cambridge/Exterior Signage

All drawings, designs, digital files, photos, illustrations and imagery contained or represented herein are the sole property of GRAPHIC SYSTEMS INTERNATIONAL, INC. and are not to be copied, distributed or utilized in part or whole without the written permission of Graphic Systems.

PAGE # _____



Graphic Systems International, Inc.
7 Lockheed Court
Greensboro, North Carolina USA 27409

800.779.2891 / 336.662.8690 fax

www.gsi-signage.com

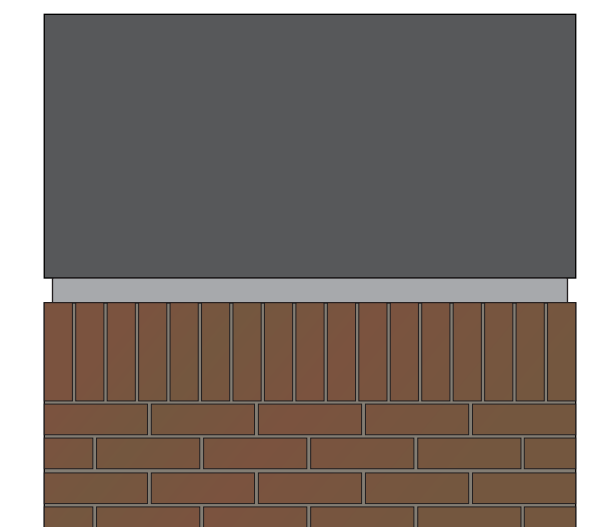
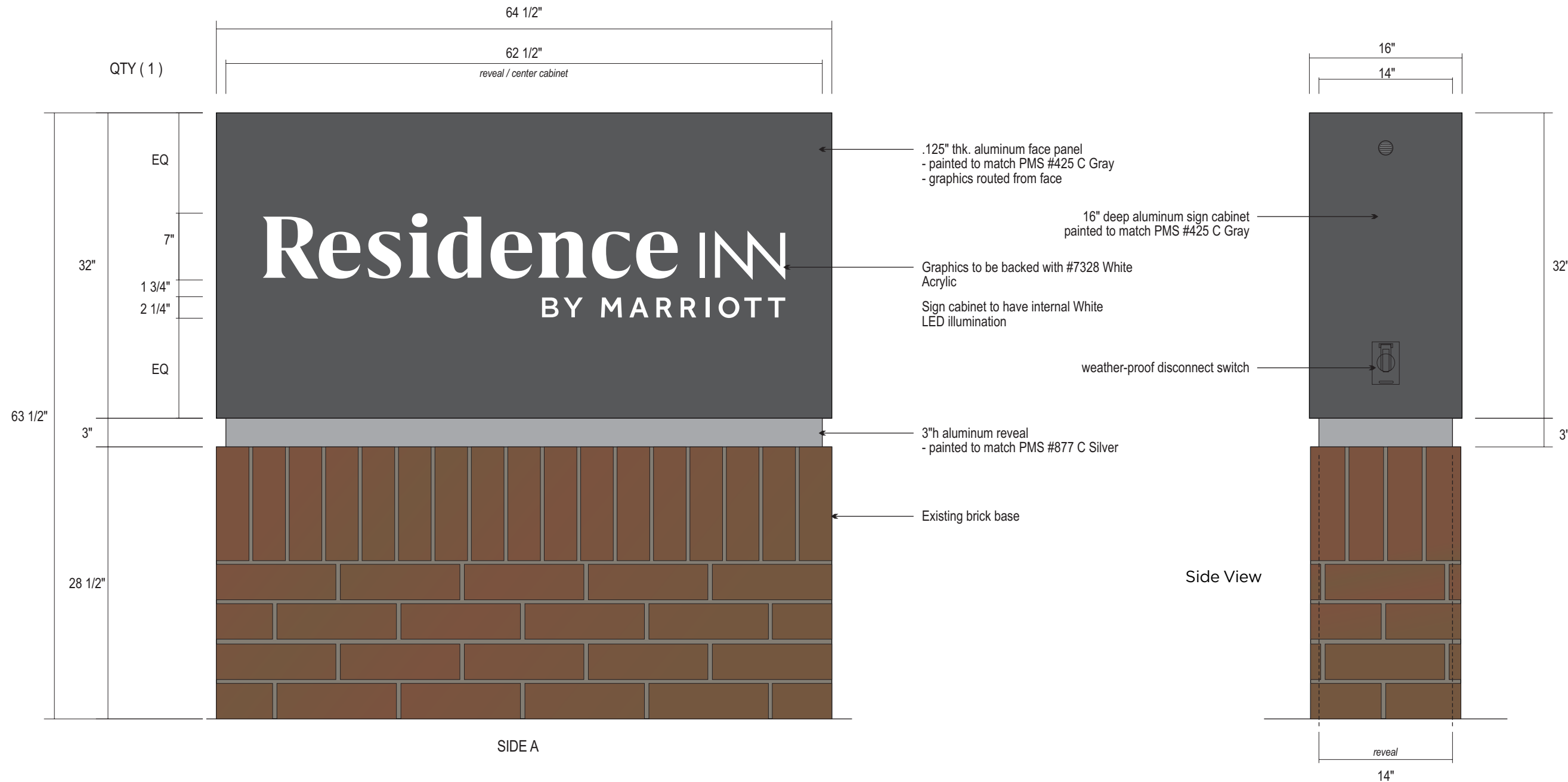


Marriott
Residence
Inn

UNATTENDED
VEHICLES
WILL BE TOWED AWAY
AT OWNER'S EXPENSE

UNATTENDED
VEHICLES
WILL BE TOWED AWAY
AT OWNER'S EXPENSE

MONUMENT ID SIGNAGE - Single Face Monument



SIDE B

Back Elevation
Scale: not to scale

Monument ID Sign

Scale: 1" = 1'-0"

COLOR KEY:

- to match PMS #425C Gray
- to match PMS #877C Silver
- #7328 White Acrylic

Residence INN
BY MARRIOTT

CAMBRIDGE, MA

CLIENT APPROVAL

- Approved Approved As Noted
 Revise and Resubmit
Please Check Appropriate Circle

By: _____

Date: _____

GSI USE ONLY

JOB # 0180180

Designer: Jason Carroll

Sales Representative: David Moore

Drawing Date: 12-17-18 Type: SD

Rev #1: 3-27-19 Rev #3: -

Rev #2: 5-6-19 Rev #4: -

GSS # 000-0-000

File Name: Monument ID Sign

File Location: Drawings/I thru Q/Marriott/
Residence Inn - Cambridge/Exterior Signage

All drawings, designs, digital files, photos, illustrations and imagery contained or represented herein are the sole property of GRAPHIC SYSTEMS INTERNATIONAL, INC. and are not to be copied, distributed or utilized in part or whole without the written permission of Graphic Systems.

PAGE #

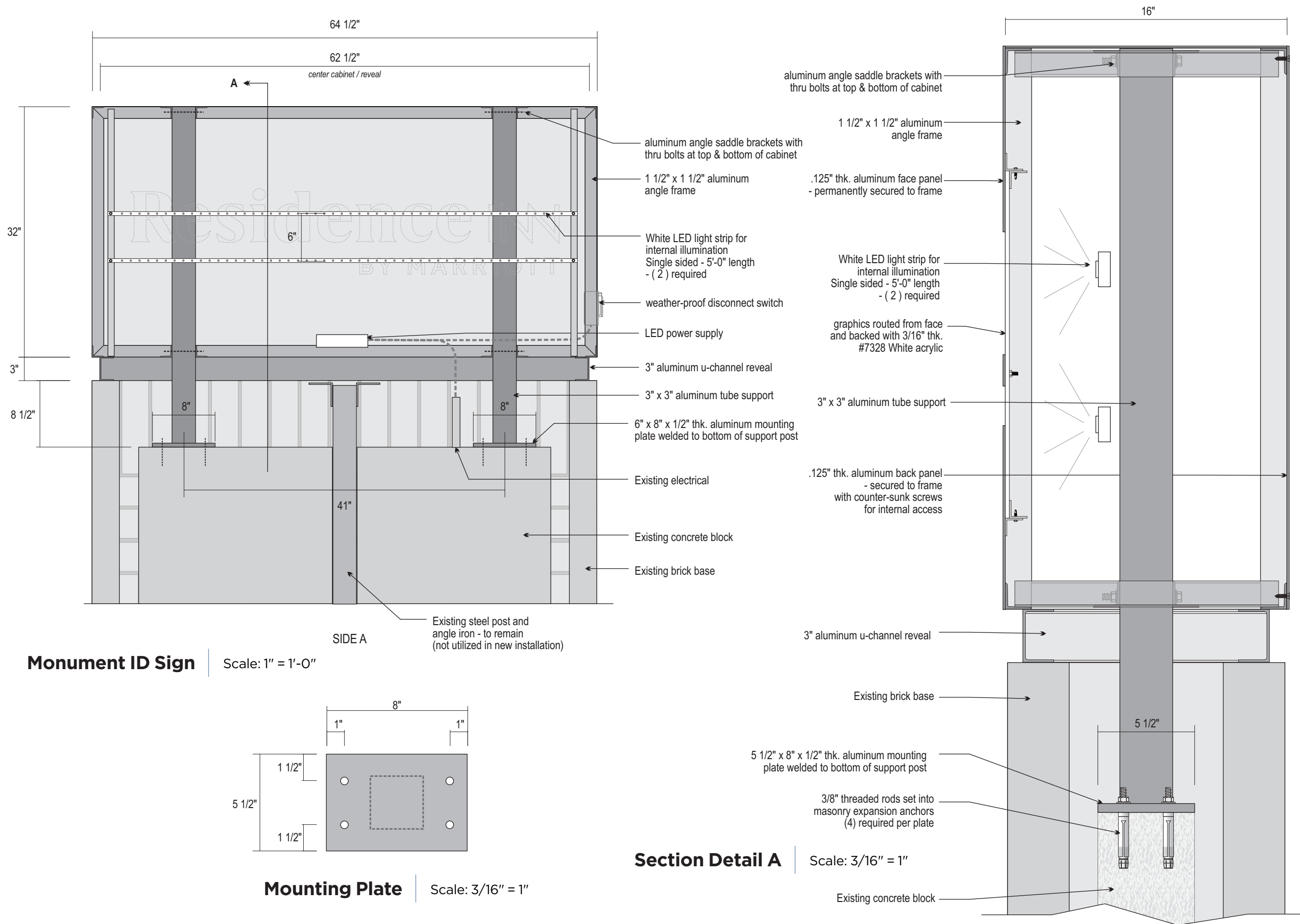


Graphic Systems International, Inc.
7 Lockheed Court
Greensboro, North Carolina USA 27409

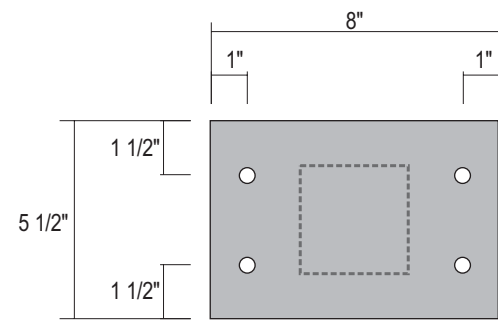
800.779.2891 / 336.662.8690 fax

www.gsi-signage.com

MONUMENT ID SIGNAGE - Single Face Monument



Monument ID Sign | Scale: 1" = 1'-0"



Residence INN
BY MARRIOTT

CAMBRIDGE, MA

CLIENT APPROVAL

Approved Approved As Noted
 Revise and Resubmit
 Please Check Appropriate Circle

By: _____

Date: _____

GSI USE ONLY

JOB # 0180180

Designer: Jason Carroll

Sales Representative: David Moore

Drawing Date: 12-17-18 Type: SD

Rev #1: 3-27-19 Rev #3: -

Rev #2: 5-6-19 Rev #4: -

GSS# 000-0-000

File Name: Monument ID Sign

File Location: Drawings/I thru Q/Marriott/ Residence Inn - Cambridge/Exterior Signage

All drawings, designs, digital files, photos, illustrations and imagery contained or represented herein are the sole property of GRAPHIC SYSTEMS INTERNATIONAL, INC. and are not to be copied, distributed or utilized in part or whole without the written permission of Graphic Systems.

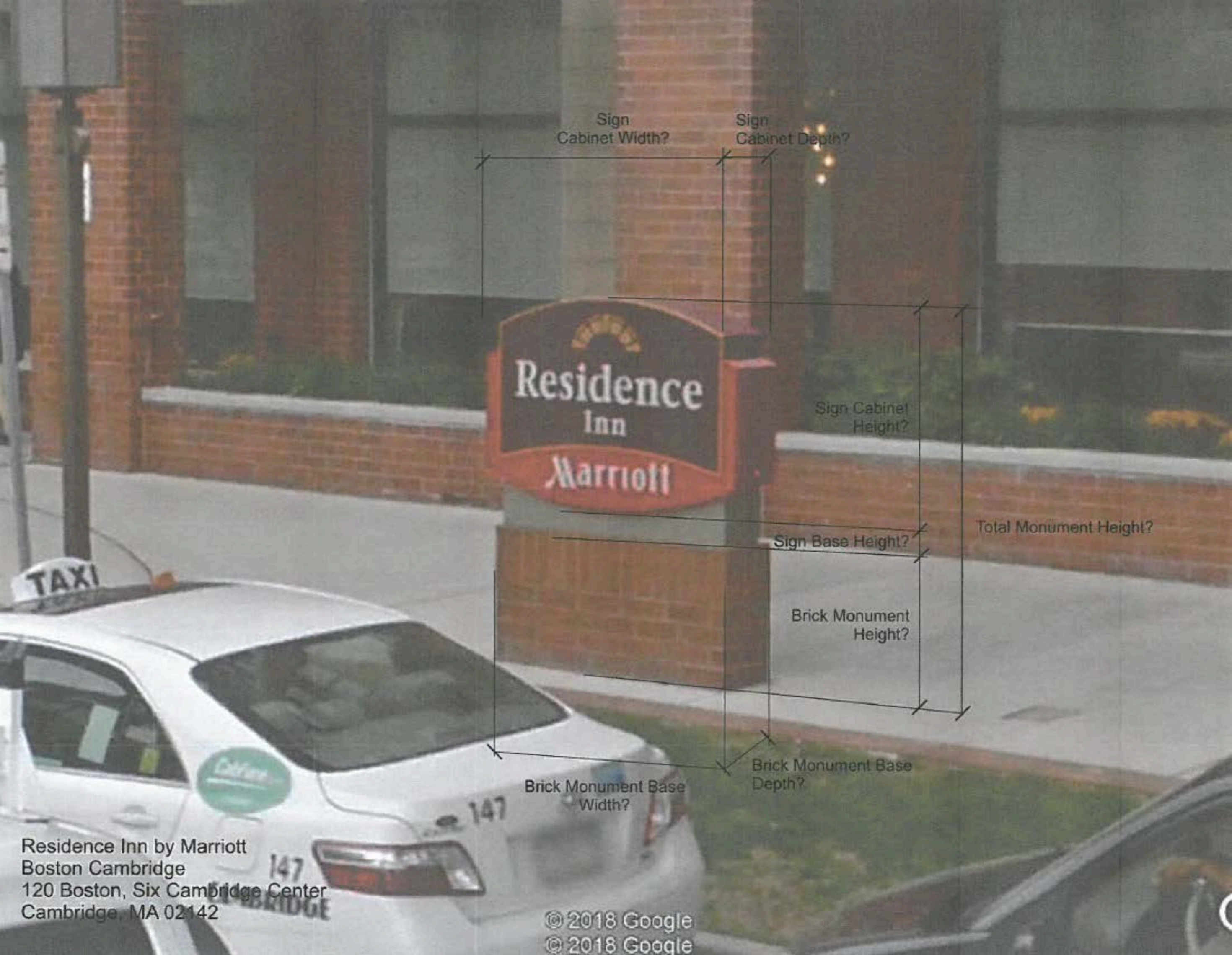
PAGE # _____



Graphic Systems International, Inc.
 7 Lockheed Court
 Greensboro, North Carolina USA 27409

800.779.2891 / 336.662.8690 fax

www.gsi-signage.com



Sign Cabinet Width?

Sign Cabinet Depth?

Residence Inn
Marriott

Sign Cabinet Height?

Total Monument Height?

Sign Base Height?

Brick Monument Height?

Brick Monument Base Width?

Brick Monument Base Depth?

Residence Inn by Marriott
Boston Cambridge
120 Boston, Six Cambridge Center
Cambridge, MA 02142

© 2018 Google
© 2018 Google