

Staff Report to the Board: April 24, 2024

Personnel and Hiring Updates

The CRA is pleased to announce that Tess Hofmann joined the CRA as a Senior Project Manager on Monday, April 22nd. Tess previously worked as an Associate in the Real Estate Group at ArentFox Schiff LLP, where she focused on real estate transactions. Prior to attending law school, Tess worked as a real estate salesperson for Stribling & Associates in New York. At the CRA, Tess will be leading key projects related to the CRA's housing and commercial development activities.

The CRA is finalizing its recruitment for summer planning and development interns. We received a significant volume of applications for the positions and look forward to the selected candidates joining us for a 10 to 12-week period this summer. As part of their work with the CRA, interns will have the opportunity to contribute both to ongoing projects and initiatives as well as undertake special research projects and assignments.

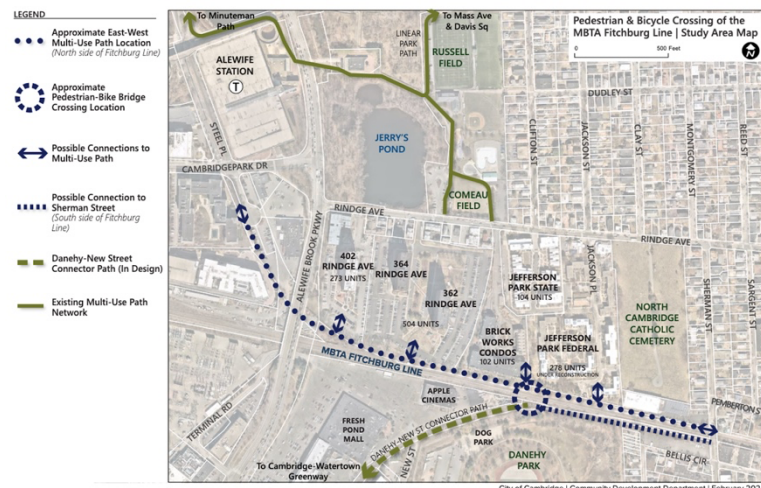
Forward Calendar

- MXD Open Space Programming Report
- Central Plaza Design Review (with Planning Board)
- 2023 Annual Transportation Report (June)
- 290 Binney St. Building Signage Proposal

Program Updates

Rindge Connectivity Project

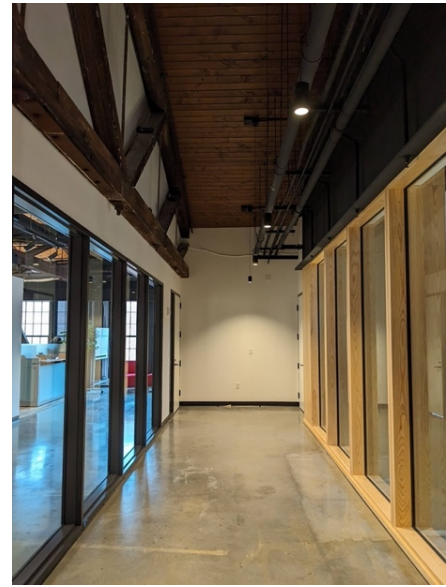
The City of Cambridge won a U.S. Department of Transportation Reconnecting Communities and Neighborhoods grant to complete designs of a pedestrian and bicycle crossing over the Fitchburg Line and adjacent multi-use paths. The CRA provided a letter of support for the City's grant application. In total, the City was awarded \$2,400,000 in federal funding, which will be combined with an existing \$600,000 in ARPA funds for the design.



The City's bridge and path designs will build off of the bridge feasibility study completed in 2023, and CRA staff will continue to work closely with CDD transportation staff to ensure alignment and collaboration on the delivery of multi-use paths north of the Fitchburg Line.

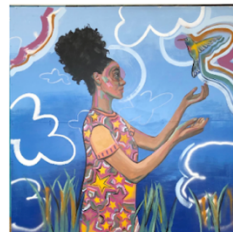
Foundry Construction Update

The CRA completed the subdivision of Suite 3B at the Foundry on schedule on April 1, 2024. GVW served as the General Contractor on the project, Cambridge Seven was the architect, and owner's project management (OPM) services were provided by STA. The tenant of the new Suite 3C, Lemelson-MIT, was able to move-in starting on April 1st in anticipation of beginning their spring programming in the space during the week of April 15th. Lemelson-MIT provides STEM education that aligns with the mission of the Foundry and will enhance the Foundry's STEM education component.



Parcel 6 Public Art

The CRA has partnered with the Community Art Center (CAC) on a new temporary art installation within Parcel 6 to debut this June. CAC hosts a Mural Masters event each year at their Port Arts Festival, bringing together local artists who partner with CAC's Teen Public Art Program on a live mural painting contest. Starting this year, the four murals produced during this event will be showcased at Parcel 6 for 12 months starting in June. The CRA is excited to reactivate the art program within Parcel 6 and showcase the talented work of local artists.



Murals from past Mural Masters events.

Forward Fund Launch

On April 1st, the CRA launched the 2024 Forward Fund for Capital Infrastructure and Feasibility Study grants. The CRA has allocated \$500,000 to fund Forward Fund projects, with organizations able to apply for up to \$100,000 for capital infrastructure grants, and up to \$10,000 for feasibility studies. Feasibility studies will be reviewed on a rolling basis, and capital infrastructure grants will have two cycles of review by the inter-departmental Forward Fund committee. For the first cycle, applications will be due June 14, 2024, and for the second, applications will be due on September 27, 2024. To learn more about the Forward Fund, and the access grant applications, visit: www.cambridgeredevelopment.org/2024-forward-fund-info

Potter Street Connection

In 2020, the CRA approved a letter agreement with MITIMCo establishing that a pedestrian connection to the Volpe site would be an early phase improvement of their development of the Volpe Exchange Parcel. After months of design coordination, the CRA has signed a License Agreement with Turner Construction via the MIT Volpe Operating Company to construct a temporary pedestrian connection between the Sixth Street walkway and Potter Street. This connection, , will facilitate better connections between the Sixth Street walkway and adjacent properties as part of the overall redevelopment of the Volpe site. This temporary condition will be made permanent through a subsequent construction project as part of the larger Volpe project open space and streetscape delivery, which will also include a bike connection to the Kittie Knox Bike Path. Construction on the temporary connection is expected to start in the coming month with an expected completion by the beginning of summer.