

sweetgreen

KENDALL SQUARE
145 BROADWAY
CAMBRIDGE, MA 02142



93 Industry Drive
PO Box 349
Versailles, KY 40383
859.879.1199



sweetgreen

Store
Space

KENDALL SQUARE
145 BROADWAY
CAMBRIDGE, MA 02142

This sign is intended to be installed in accordance with the requirements of Article 600 of the National Electrical Code and/or other applicable local codes. This includes proper grounding and bonding of the sign.

RUGGLES SIGN DOES NOT PROVIDE PRIMARY ELECTRICAL TO SIGN LOCATION!

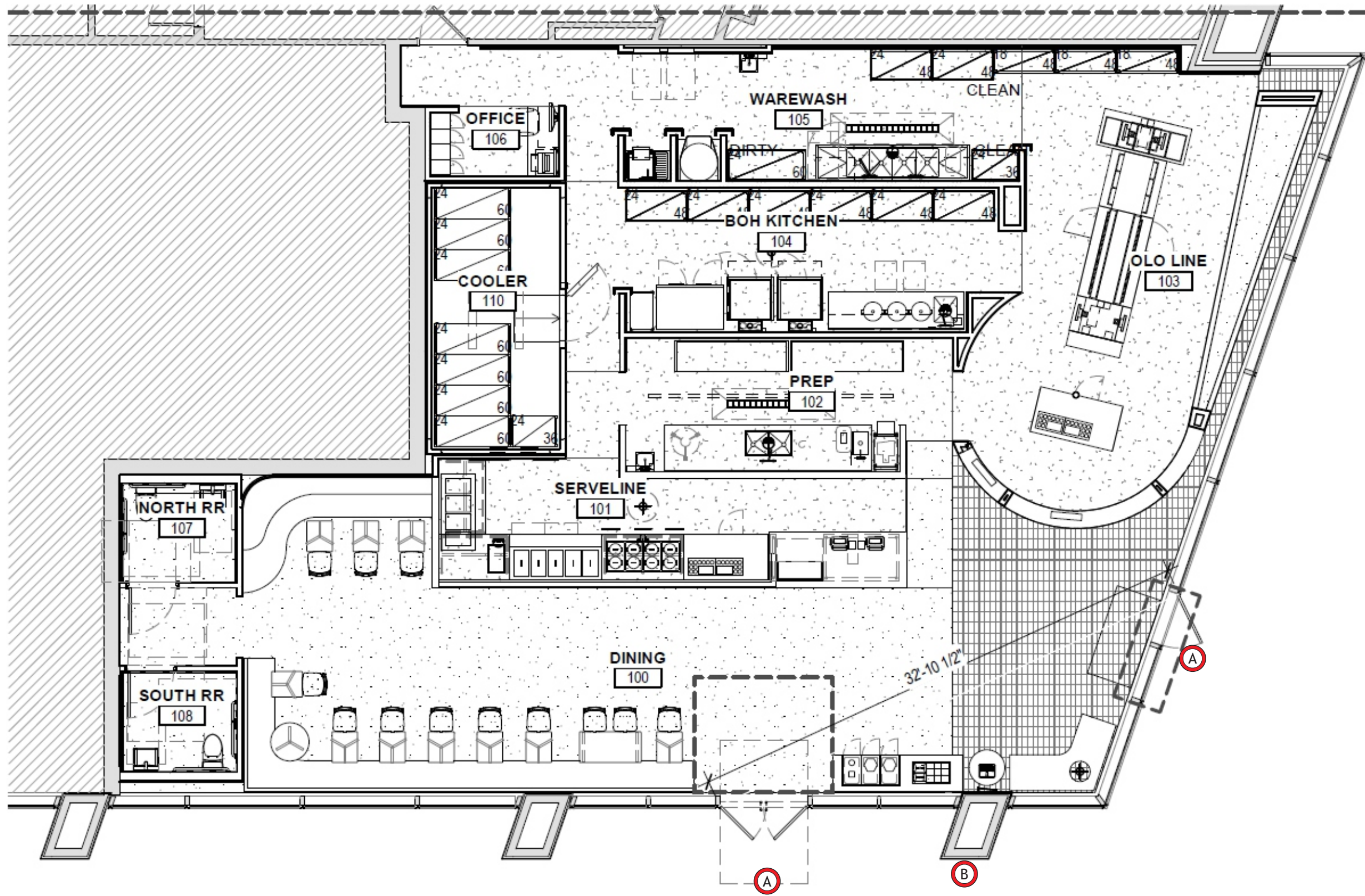


Submittal Date: 01/21/20
Acct Rep: Chad Elliott
Designer: Heather Hisle

REVISIONS

r1: <u>01/27/20</u>	r7: _____
r2: <u>06/15/20RC</u>	r8: _____
r3: <u>07/01/20RC</u>	r9: _____
r4: _____	r10: _____
r5: _____	r11: _____
r6: _____	r12: _____

PLAN - VIEW
Scale: N.T.S.



A SG9FL RPT
Qty - 2

B SG BLD38 illum cust
Qty - 1



93 Industry Drive
PO Box 349
Versailles, KY 40383
859.879.1199



sweetgreen

Store
Space

KENDALL SQUARE
145 BROADWAY
CAMBRIDGE, MA 02142

This sign is intended to be installed in accordance with the requirements of Article 600 of the National Electrical Code and/or other applicable local codes. This includes proper grounding and bonding of the sign.

RUGGLES SIGN DOES NOT PROVIDE PRIMARY ELECTRICAL TO SIGN LOCATION!



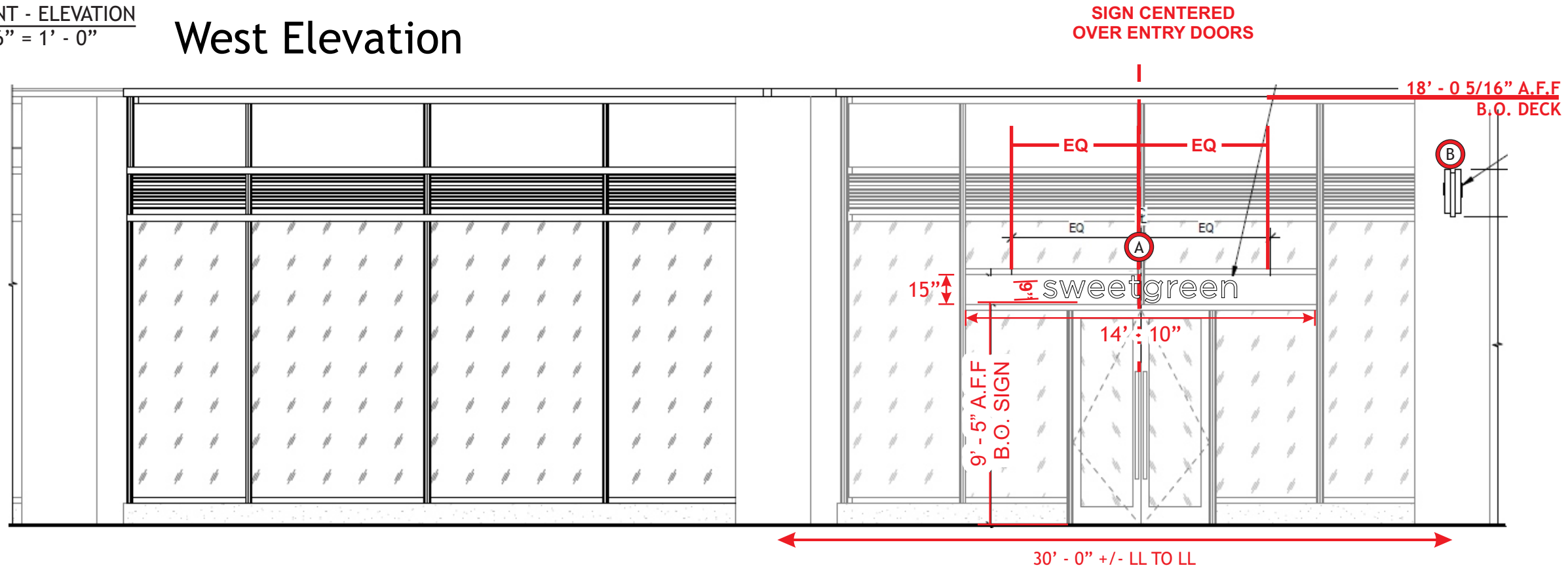
Submittal Date: 01/21/20
Acct Rep: Chad Elliott
Designer: Heather Hisle

REVISIONS

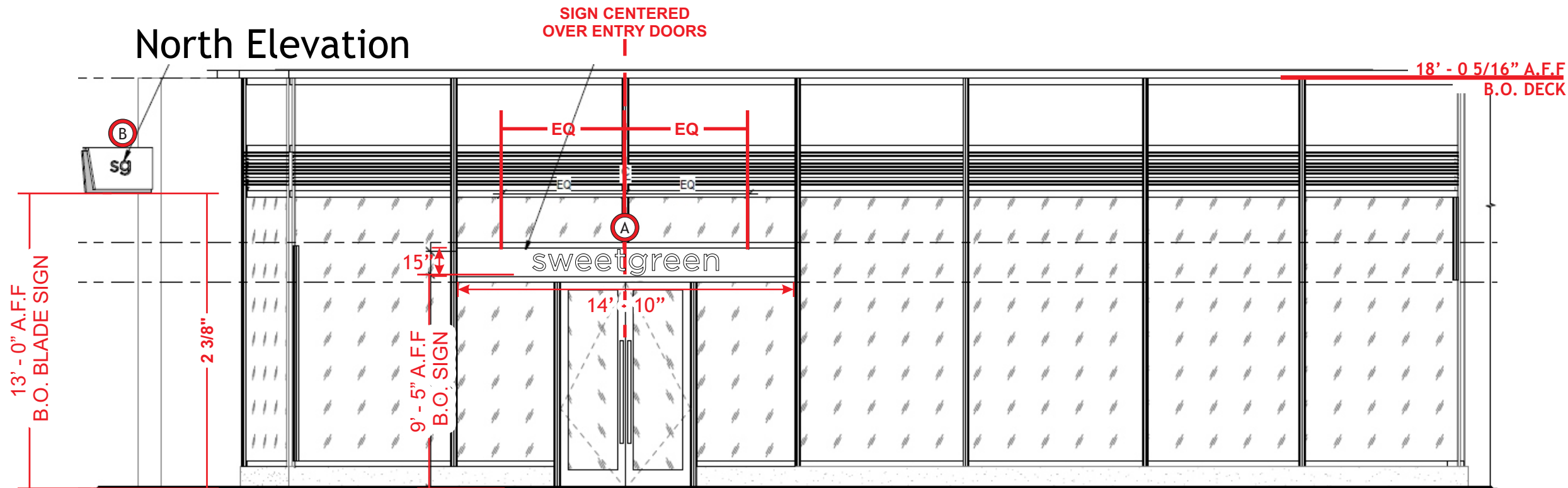
r1: 01/27/20	r7: _____
r2: 06/15/20RC	r8: _____
r3: 07/01/20RC	r9: _____
r4: _____	r10: _____
r5: _____	r11: _____
r6: _____	r12: _____

STOREFRONT - ELEVATION
Scale: 3/16" = 1' - 0"

West Elevation



North Elevation



93 Industry Drive
PO Box 349
Versailles, KY 40383
859.879.1199



sweetgreen

Store
Space

KENDALL SQUARE
145 BROADWAY
CAMBRIDGE, MA 02142

This sign is intended to be installed in accordance with the requirements of Article 600 of the National Electrical Code and/or other applicable local codes. This includes proper grounding and bonding of the sign.

RUGGLES SIGN DOES NOT PROVIDE PRIMARY ELECTRICAL TO SIGN LOCATION!



Submittal Date: 01/21/20
Acct Rep: Chad Elliott
Designer: Heather Hisle

REVISIONS

r1: 01/27/20	r7: _____
r2: 06/15/20RC	r8: _____
r3: 07/01/20RC	r9: _____
r4: _____	r10: _____
r5: _____	r11: _____
r6: _____	r12: _____

A SG9FL RPT
Qty - 2

B SG BLD38 illum cust
Qty - 1

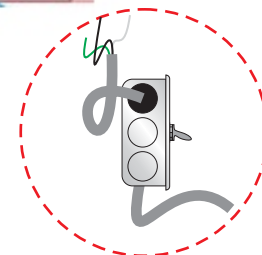
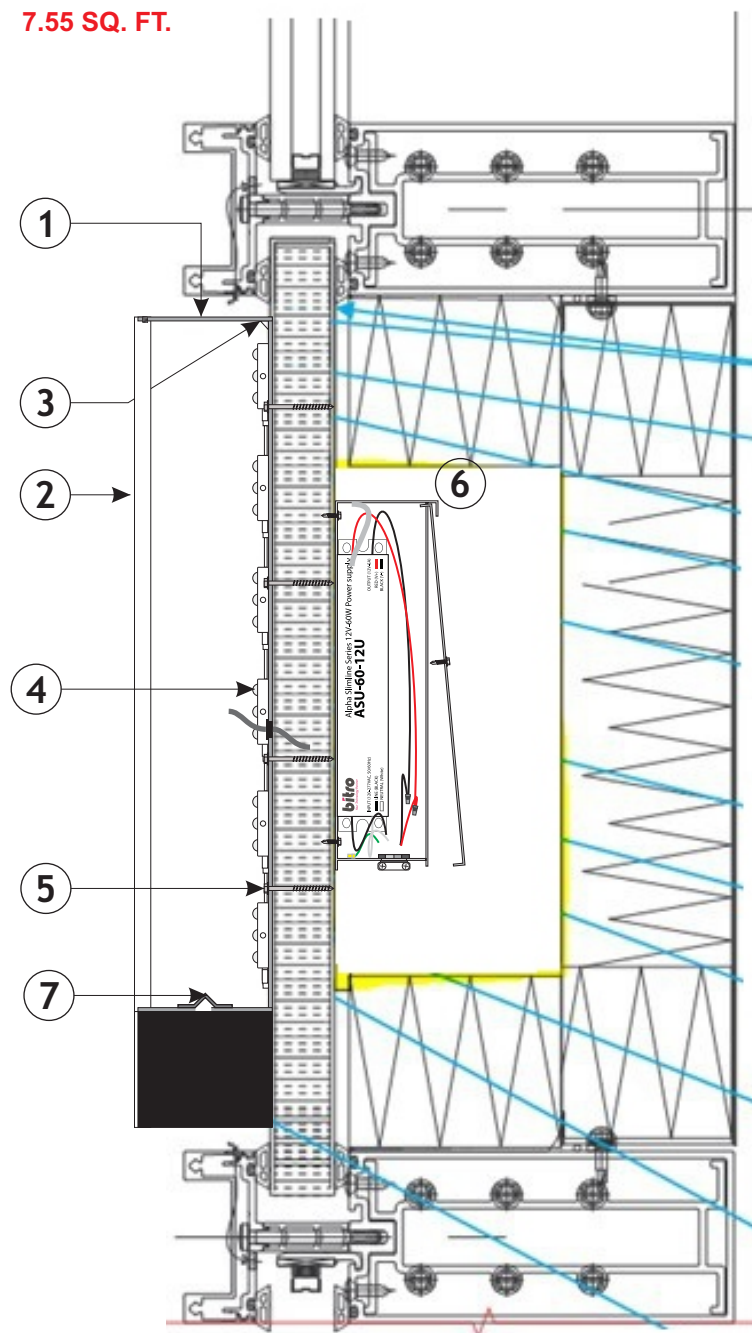
A FACE-LIT CHANNEL LETTERS - ELEVATION
Scale: 3/4' = 1' - 0"



SIGN - DETAILS

- 1 2 1/2" DEEP ALUMINUM RETURNS WITH ALUMINUM BACKS, PAINTED TO MATCH MAP N923SP SATIN BLACK. INTERIOR SURFACES PAINTED HIGH GLOSS WHITE
- 2 3/8" THICK LIGHT DIFFUSING ACRYLIC LETTER FACES WITH SET SCREWS TO HOLD IN RETURN
- 3 LETTERS CAULKED AROUND ENTIRE LETTER PERIMETER TO PREVENT LIGHT LEAKS
- 4 BITRO LITE 5000K WHITE LED UNITS TO ILLUMINATE LETTERS.
- 5 LETTERS MOUNT WITH REQUIRED FASTENERS LAG BOLT FASTENERS TO METAL STOREFRONT.
- 6 BITRO ASU-60-12U LED DRIVER (120-277 VOLT) CONTAINED IN PAIGE 980054C SNAP 2 ENCLOSURE LOCATED REMOTELY
- 7 DRAIN HOLE AT TH BOTTOM OF LETTERS

FACE LIT CHANNEL LETTERS - SECTION
Scale: N.T.S.



DEDICATED PRIMARY SIGN
CIRCUIT AND DISCONNECT
PROVIDED BY ELECTRICIAN



93 Industry Drive
PO Box 349
Versailles, KY 40383
859.879.1199



sweetgreen

Store
Space

KENDALL SQUARE
145 BROADWAY
CAMBRIDGE, MA 02142

This sign is intended to be installed in accordance with the requirements of Article 600 of the National Electrical Code and/or other applicable local codes. This includes proper grounding and bonding of the sign.

RUGGLES SIGN DOES NOT PROVIDE PRIMARY ELECTRICAL TO SIGN LOCATION!

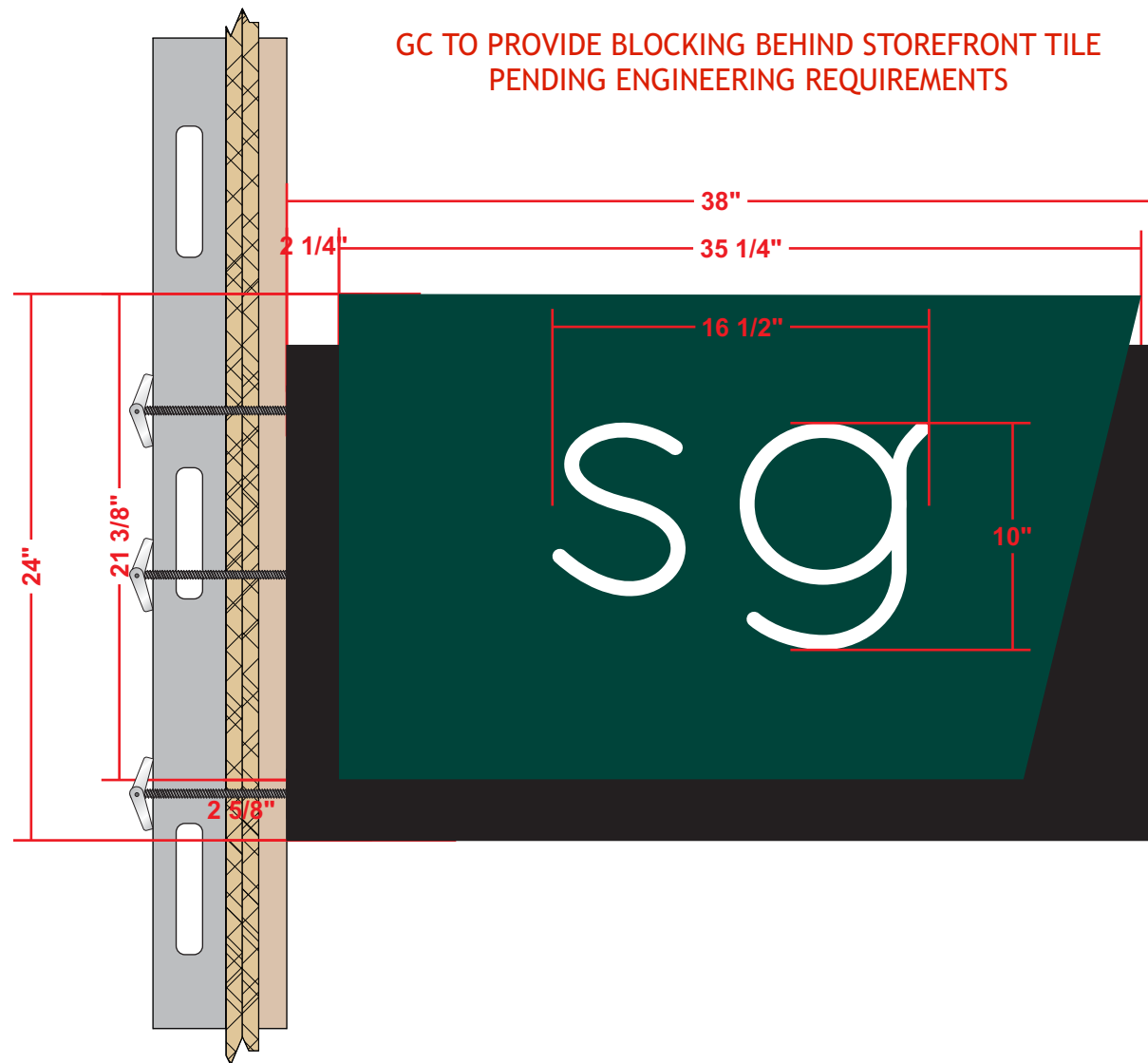


Submittal Date: 01/21/20
Acct Rep: Chad Elliott
Designer: Heather Hisle

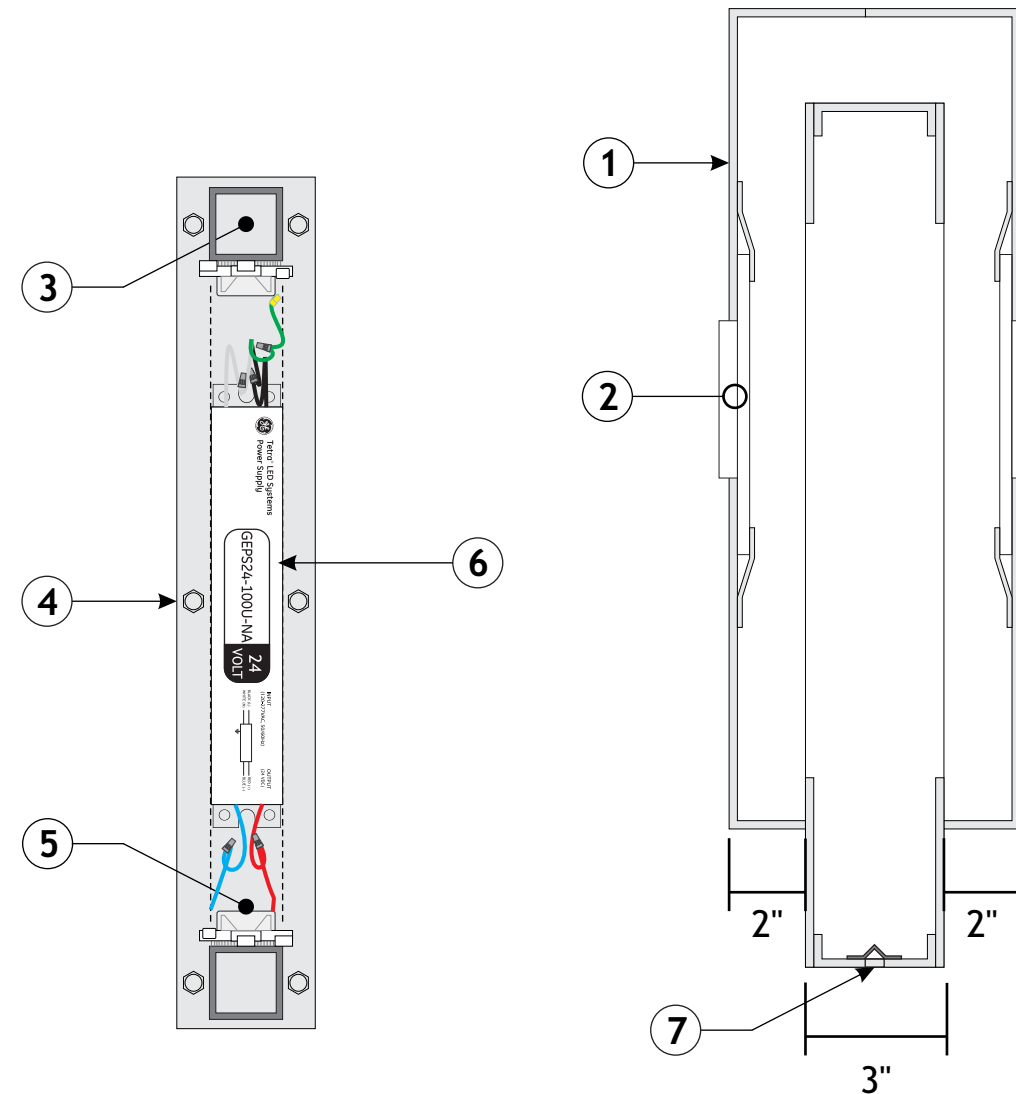
REVISIONS

r1: 01/27/20	r7: _____
r2: 06/15/20RC	r8: _____
r3: 07/01/20RC	r9: _____
r4: _____	r10: _____
r5: _____	r11: _____
r6: _____	r12: _____

B BLADE SIGN - ELEVATION
Scale: 1 1/2" = 1' - 0"



SIGN - SECTION



SIGN - DETAILS

- ① 7" DEEP OVERALL ALUMINUM FABRICATED BLADE SIGN, PAINTED TO MATCH PMS #3308C GREEN AND MAP N923SP SATIN BLACK. INTERIOR SURFACES PAINTED HIGH GLOSS WHITE
- ② 3/4" THICK, ROUTED LIGHT DIFFUSING ACRYLIC PUSH THRU LETTERS WITH SANDED EDGES, BACKED WITH 1/8" WHITE POLYCARBONATE BACKER
- ③ 1 1/2" FABRICATED ALUMINUM TUBE FRAME, FRAME IS WELDED TO A 1/4" THICK ALUMINUM MOUNTING PLATE
- ④ MOUNTING PLATE / FRAME ASSEMBLY IS BOLTED DIRECTLY TO WALL WITH TOGGLES, FABRICATED "BOX" WILL SLIDE OVER FRAME
- ⑤ SIGN ILLUMINATES WITH GE TETRA EDGESTRIP HO 5000K WHITE LED UNITS APPLIED ALONG TOP AND BOTTOM OF INTERNAL ALUMINUM FRAME
- ⑥ BITRO ASU-60-12U LED DRIVER (120-277 VOLT) CONTAINED IN PAIGE 980054C SNAP 2 ENCLOSURE LOCATED REMOTELY
- ⑦ DRAIN HOLE AT THE BOTTOM OF LETTERS



93 Industry Drive
PO Box 349
Versailles, KY 40383
859.879.1199



sweetgreen

Store
Space

KENDALL SQUARE
145 BROADWAY
CAMBRIDGE, MA 02142

This sign is intended to be installed in accordance with the requirements of Article 600 of the National Electrical Code and/or other applicable local codes. This includes proper grounding and bonding of the sign.

RUGGLES SIGN DOES NOT PROVIDE PRIMARY ELECTRICAL TO SIGN LOCATION!



Submittal Date: 01/21/20
Acct Rep: Chad Elliott
Designer: Heather Hisle

REVISIONS

r1: <u>01/27/20</u>	r7: _____
r2: <u>06/15/20RC</u>	r8: _____
r3: <u>07/01/20RC</u>	r9: _____
r4: _____	r10: _____
r5: _____	r11: _____
r6: _____	r12: _____

SG BLD38 illum cust