



Central Square Nora Theater

<https://www.centralsquaretheater.org/about/the-nora-theatre-company/>

Main Stage

Maximum Capacity 180. Seating capacity is 135-170 (varies depending on current configuration).

Dimensions: 65 ft x 42 ft (full room) - stage space dependent on seating setup (2,732 sf)

Grid height: 19 ft floor to grid.

Lighting instruments and audio equipment are also available to rent.

A green room with two dressing rooms (with private restrooms) are adjacent to the space. Each dressing room comfortably accommodates 4 people.



Rental Fee

\$1,500 (4-hour minimum)

\$250 each additional hour

Weekly rate: \$3,500

Studio

Maximum Capacity 49

Dimensions: 35ft x 25ft (full space including seating areas) (1,950 sf)

Ceiling height: 19ft to grid space, 9ft in seating area.

The space is located on the second floor and is served by a patron elevator in front and a material lift from shop.

Lighting grid with 6 channels of control via a two-scene preset console.

Lighting instruments and audio equipment are also available to rent.

The green room and dressing rooms are located down a hallway.

Rental Fee (includes same items as Main Stage)

\$650 (4 Hour Minimum)

\$100 each additional hour

Weekly rate: \$1,400

Rental includes stage, lighting, use of green room an dressing rooms, lobby set up, and overhead costs

Multicultural Arts Center

<http://www.multiculturalartscenter.org/>

Theater:

38 x 53 feet (2,014 sf plus upper balconies); 14' to balcony, 35' to ceiling, seats 120-175

Rental rates \$1,600 for non-profits to \$4,400 for private/corporate events; weekday rental \$250/hour, minimum 6 hours



Lower Gallery: 28 x 22 feet (616 sf)

Upper Gallery: 17.5 x 39.5 feet (691 sf); 50 guests



Dante Aligheiri

<http://www.dantemass.org>

Maximum Capacity: Reception: 200 seated guests

Square Footage: 5,000 sq. ft.



Also smaller more intimate spaces for up to 50 guests

Arsenal Center for the Arts

<http://arsenalarts.org/>

Mosesian Black Box <http://arsenalarts.org/rentals/>

Black Box Dimensions: 34'7" X 36' – square (1,242 sf)

Black Box Floor: ¼" masonite over a sprung floor

Control Booth: Theatrical lighting and sound equipment package available

Audience Capacity: Up to 100 seats available depending on desired seating arrangement. Seating capacities differ for non-theatrical events.

Amenities: Theatrical lighting and sound equipment available. (additional rental fees may apply)



Rehearsal Hall

The Rehearsal Hall is a versatile rectangular space, featuring high ceilings and plenty of natural light. It is an ideal space for rehearsals, larger art classes, receptions, conferences and training sessions.

Dimensions: 25'x 38' – rectangle (950 sf)

Capacity: 50-75 comfortably (13 -19 sf/p)

Flooring: Rosco, MDF Sprung Dance floor



Mezzanine Classroom

Dimensions: 32' x 16' - rectangle (512 sf)

Capacity: 20-35 comfortably



Teaching Gallery

31 x 19' (589 sf); 30-35 people



Arts at the Armory, Somerville, MA

<http://artsatthearmory.org/>

Performance Hall

7,000 sf, maximum of 395 seated or standing



Café

Capacity of 52



B-5 Classroom

Ideal for workshops, arts & crafts, rehearsals, music class; 20 people or less



Green Street Studios, 185 Green Street

<http://www.greenstreetstudios.org/>

Black Box Studio Theater

Size: 39'-6" x 58'-7" or 2314 sf

Rehearsals: \$14/hour

Classes: \$36/hour

Private Lessons: \$25/hour



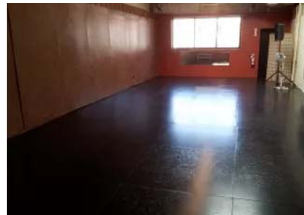
Studio 2

Size: 40'-1" x 34'-9" or 1364 sq ft



Somatic Studio

Size: 18'-6" x 43'-9" or 819 sq ft



Dance Complex, 536 Massachusetts Avenue, Cambridge

<http://www.dancecomplex.org/>

THEATRE (Julie Ince Thompson Theatre): STAGE- Depth: 25ft., Width: 35ft., Wood floor with Marley (can be installed/removed for performances for a fee), Riser Seats: approximately 90 (+10 extra with mats on the floor), Theatre Audience Capacity: 110 persons. Piano available.



All with full stereo system, most with Piano available. Barres, mirrors, and restrooms with lockers and showers are available;

- **Studio #1:** 1320 sq. ft., Floor space: 41' x 32' STUDIO/THEATRE (Julie Ince Thompson Theatre). Wood Floor with Marley, NO SHOES (slippers OK).
- **Studio #2:** 1312 sq. ft., Floor space: 48' x 27.5' Wood floor, shoes (Ballroom, Jazz, Ballet, Hip-Hop shoes only).
- **Studio #3:** 1881 sq. ft., Floor space: 49.5' x 30' Marley floor, shoes (Ballroom, Jazz, Ballet, Hip-Hop shoes only).
- **Studio #4:** 558 sq. ft., Floor space 31' x 18' Wood floor, shoes (all, Tap and Flamenco are okay).
- **Studio #5:** 640 sq. ft., Floor space: 32' x 20' Wood floor, shoes (all, Tap and Flamenco are okay).
- **Studio #6:** 1739 sq. ft., Floor space: 47' x 37' Tap Marley floor, shoes (all, Tap and Flamenco are okay).
- **Studio #7:** 1,823 sq. ft., Floor space: 19' x 53', Marley floor, shoes (all, Tap and Flamenco are okay), baby grand piano, 2 restrooms, kitchen, h/c accessible.