



STOSS

POINT PARK CONCEPTS

APRIL 12, 2016















Broad Channel Weir

Broad Square:
A sun-lit public open space for gatherings, performance, food truck festivals, farmers' markets, and pedestrians

Berm edge with seating and planting elements to provide buffering from traffic and minimize headlights from southbound traffic Third Street

Swing seats / seating elements

Potential area for infiltration

Woonerf / shared pedestrian and vehicular way to provide more connectivity to adjacent retail and MIT East Campus



KEY ENTRY POINTS



IMPORTANT CONNECTIONS



SUGGESTED PARK PROGRAMS



SUSTAINABLE FEATURES



CHARACTER



THREE POINTS PARK

- **Roadway** – The Framework Plan calls for the realignment of Binney Street from First Street to Edaine W. Land Boulevard. This change will create a “T” intersection at Binney Street and Land Boulevard and create an intermediate “stopping stone” parcel to assist in linking First Park with Three Points Park.
- **Woonerf** – In an effort to create a strong relationship between the proposed Alexandria project and Three Points Park, First Street between Binney Street and Land Boulevard should be rebuilt as a woonerf or narrowed to one lane of traffic moving south.
- **Crosswalks** – A new crosswalk should be installed on the southern end of the intersection of Binney Street and Land Boulevard.

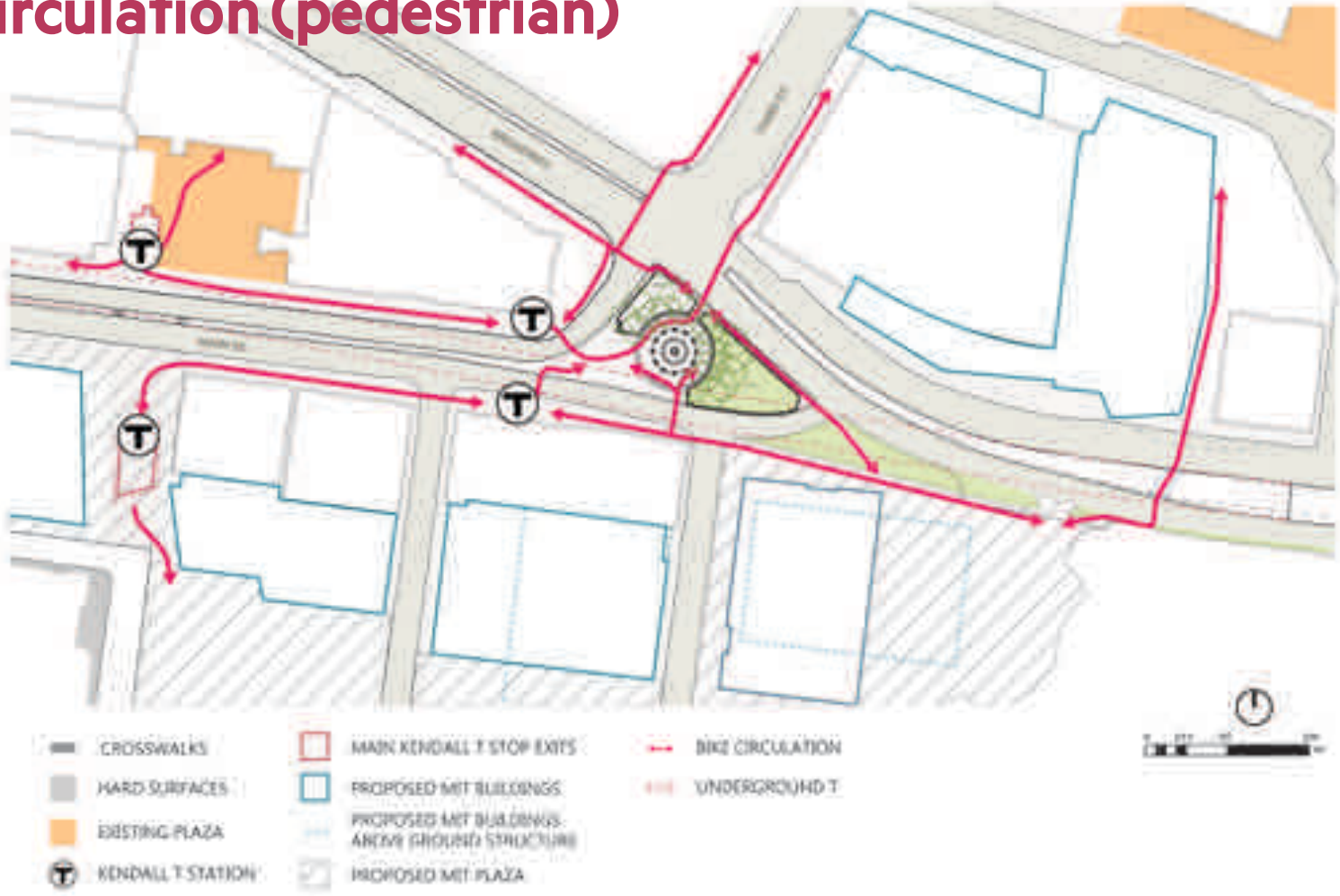
POINT PLAZA

- **Roadway** – The site design anticipates the completion of the current construction, including the Third Street connector.
- **Woonerf** – To enlarge the sense of public space and slow vehicular traffic around this small island-like parcel, the design team strongly recommends that Main Street between Point Park and MIT be pedestrianized. This woonerf will encourage free pedestrian movement and better activate the park and the proposed commercial edge along the south side of Main Street.
- **Crosswalks** – An additional pedestrian crosswalk is recommended at the eastern end of Point Plaza. This may be accomplished by the hawk signal currently planned by City Transportation department.

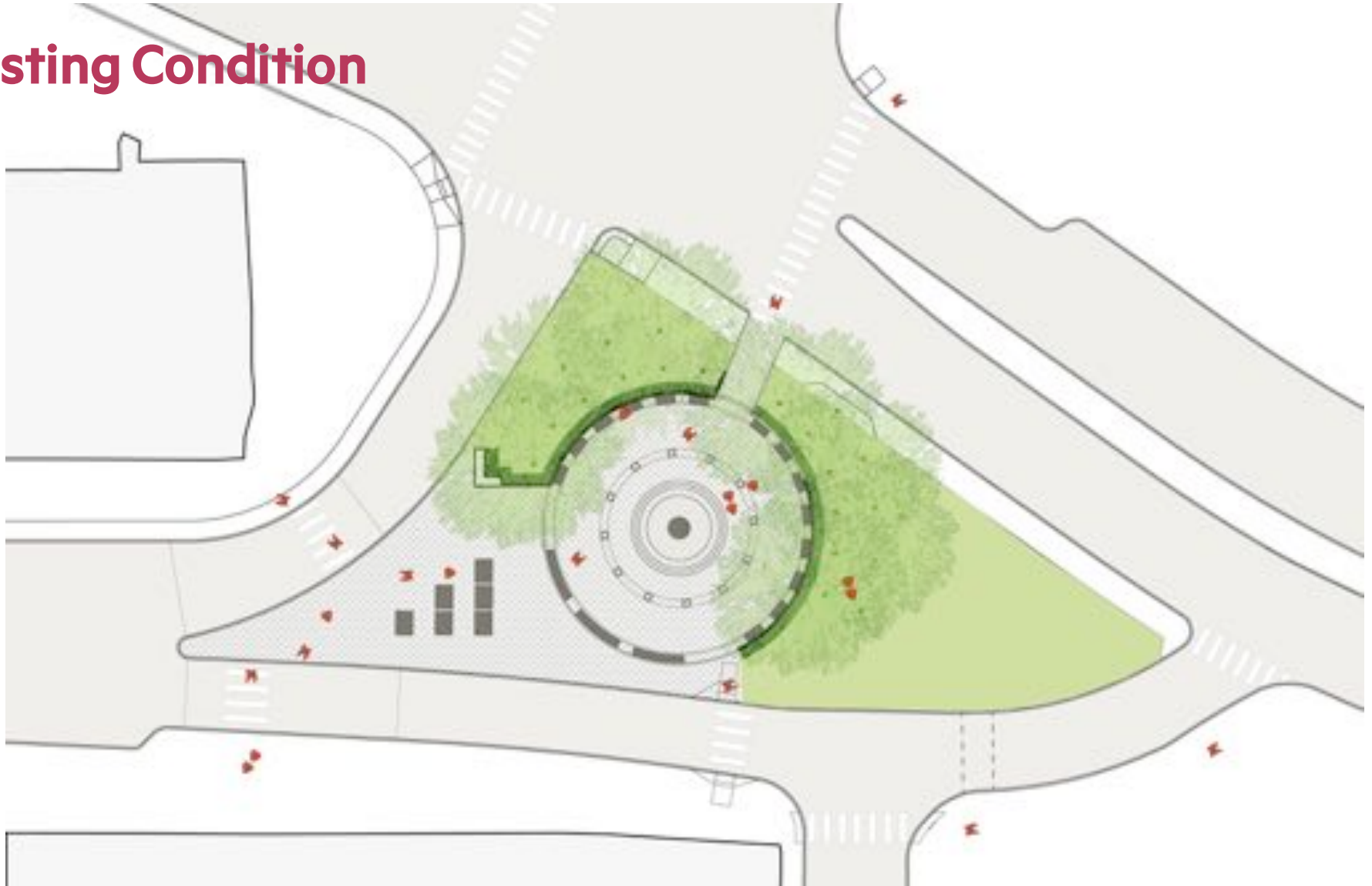


WOONERF AT POINT PLAZA

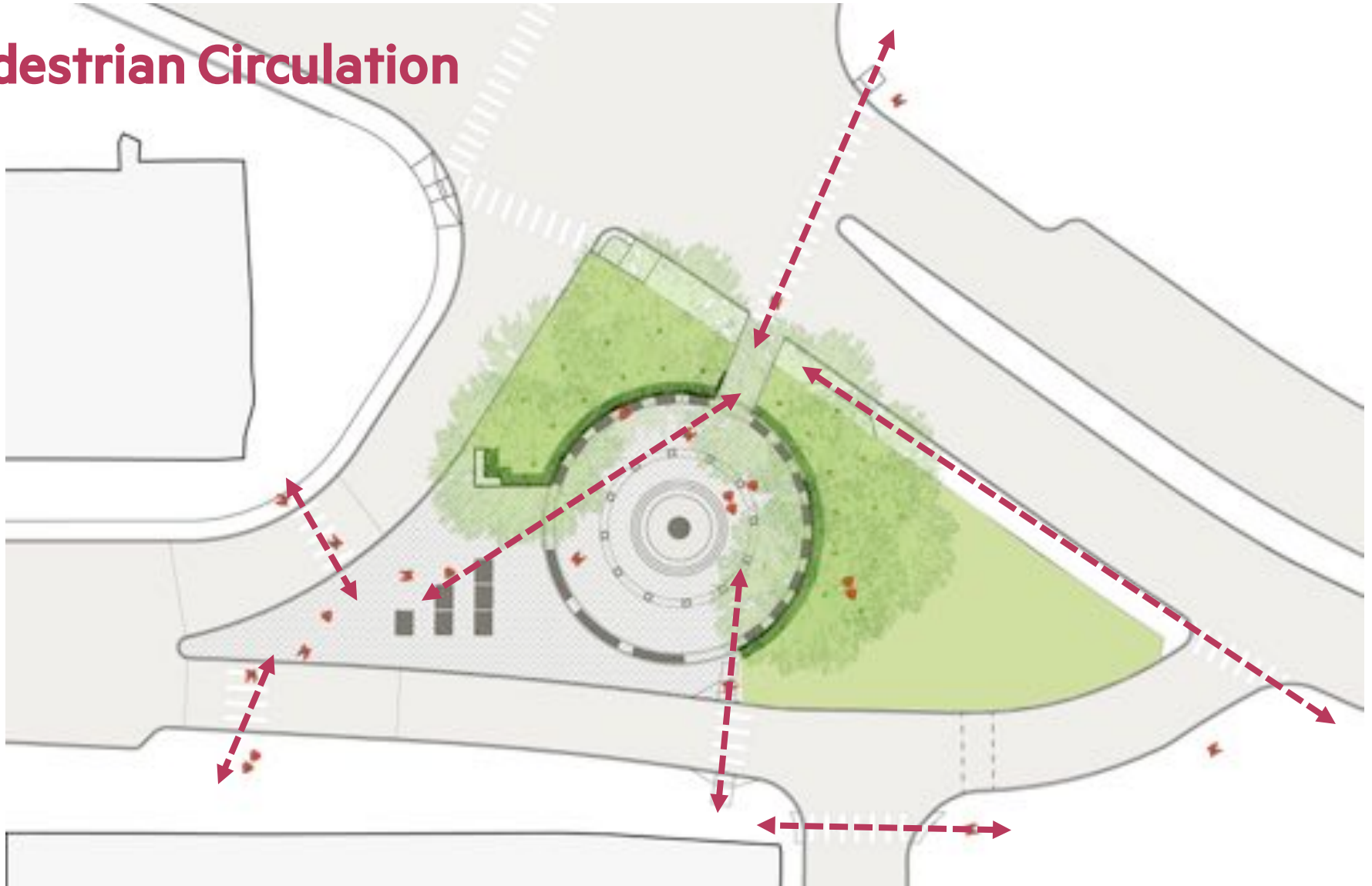
Area Circulation (pedestrian)



Existing Condition



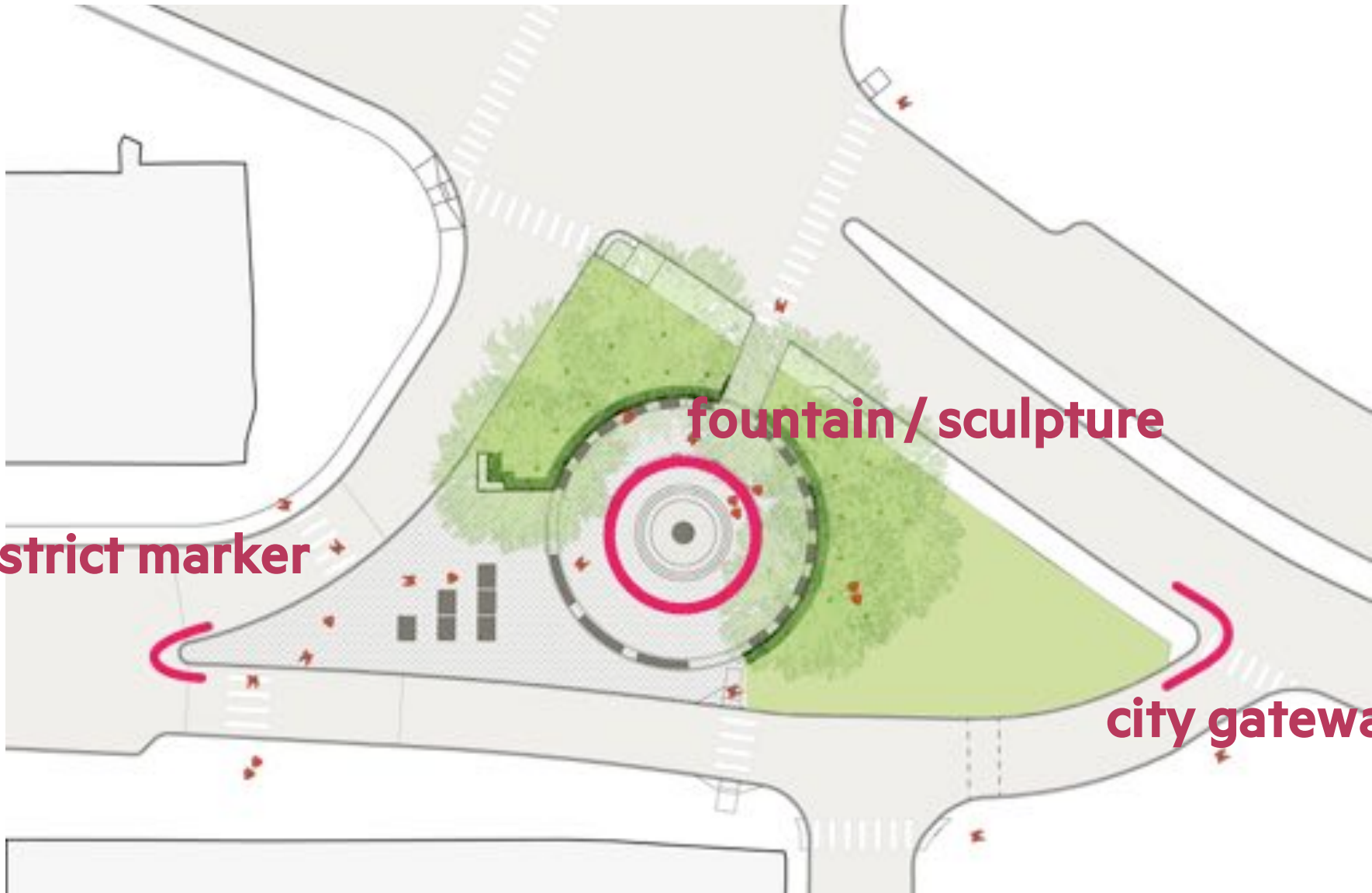
Pedestrian Circulation



fountain / sculpture

district marker

city gateway





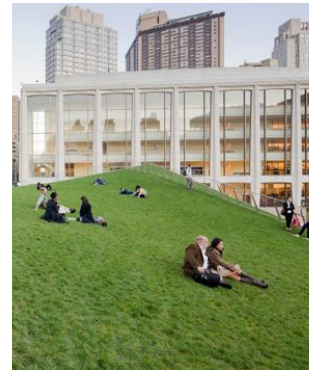
plaza



fountain



garden

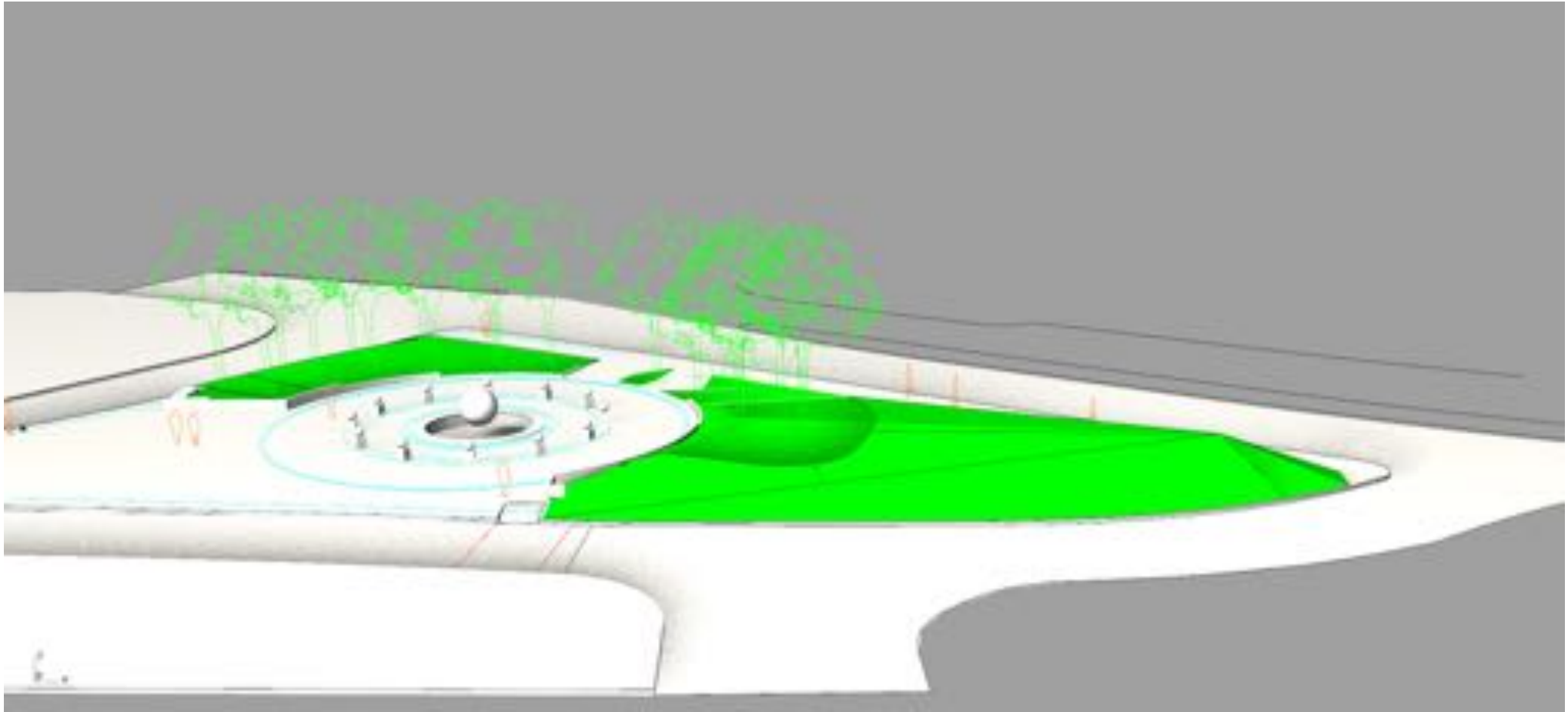


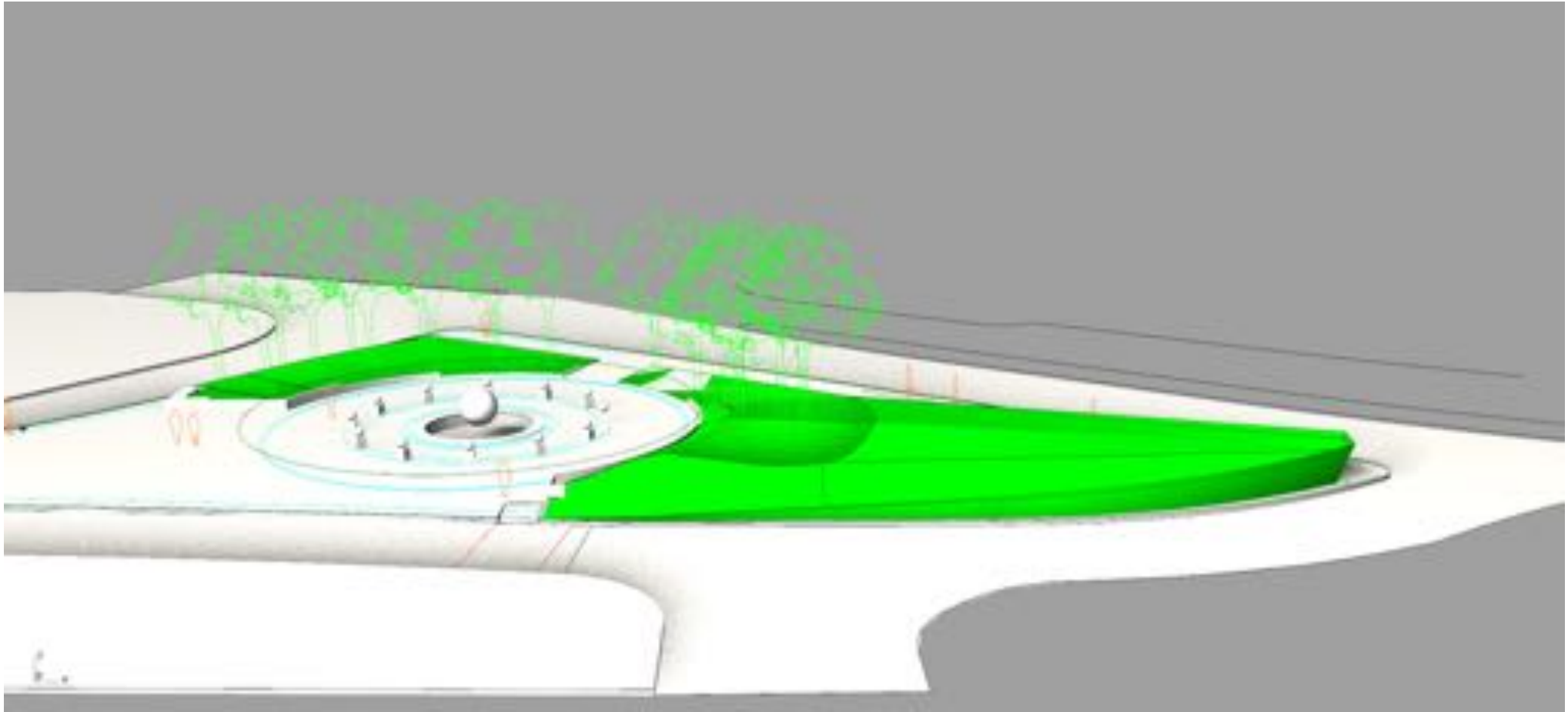
lawn



TILTED LAWN

Diller Scofidio + Renfro - Hyatt Pavilion







Brufo – General Maister Memorial Park



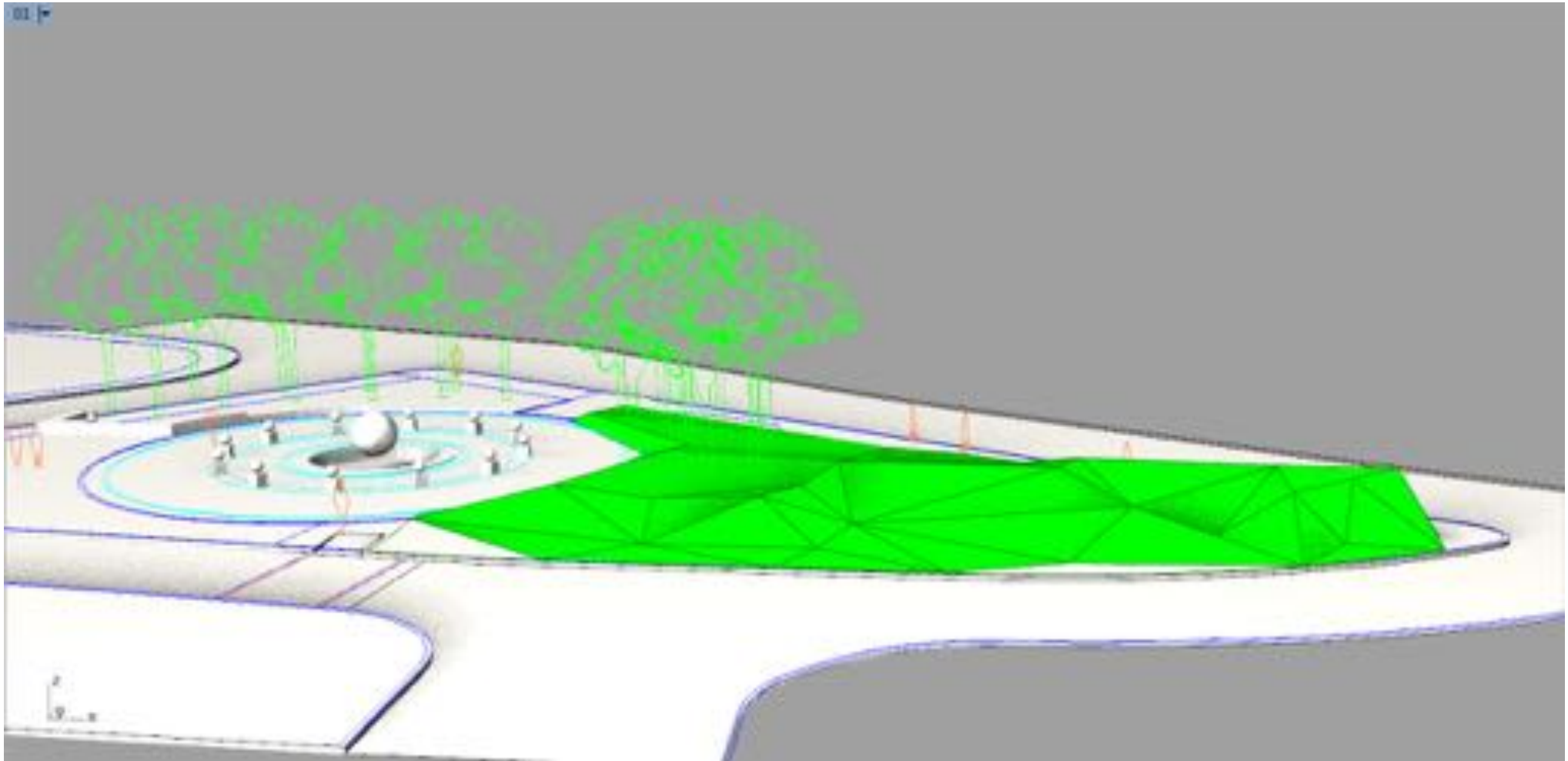
Fort "Werk aan 't Spoel" – RAAAF, Atelier de Lyon



Ciclostile Architettura – Ecole del Rusco



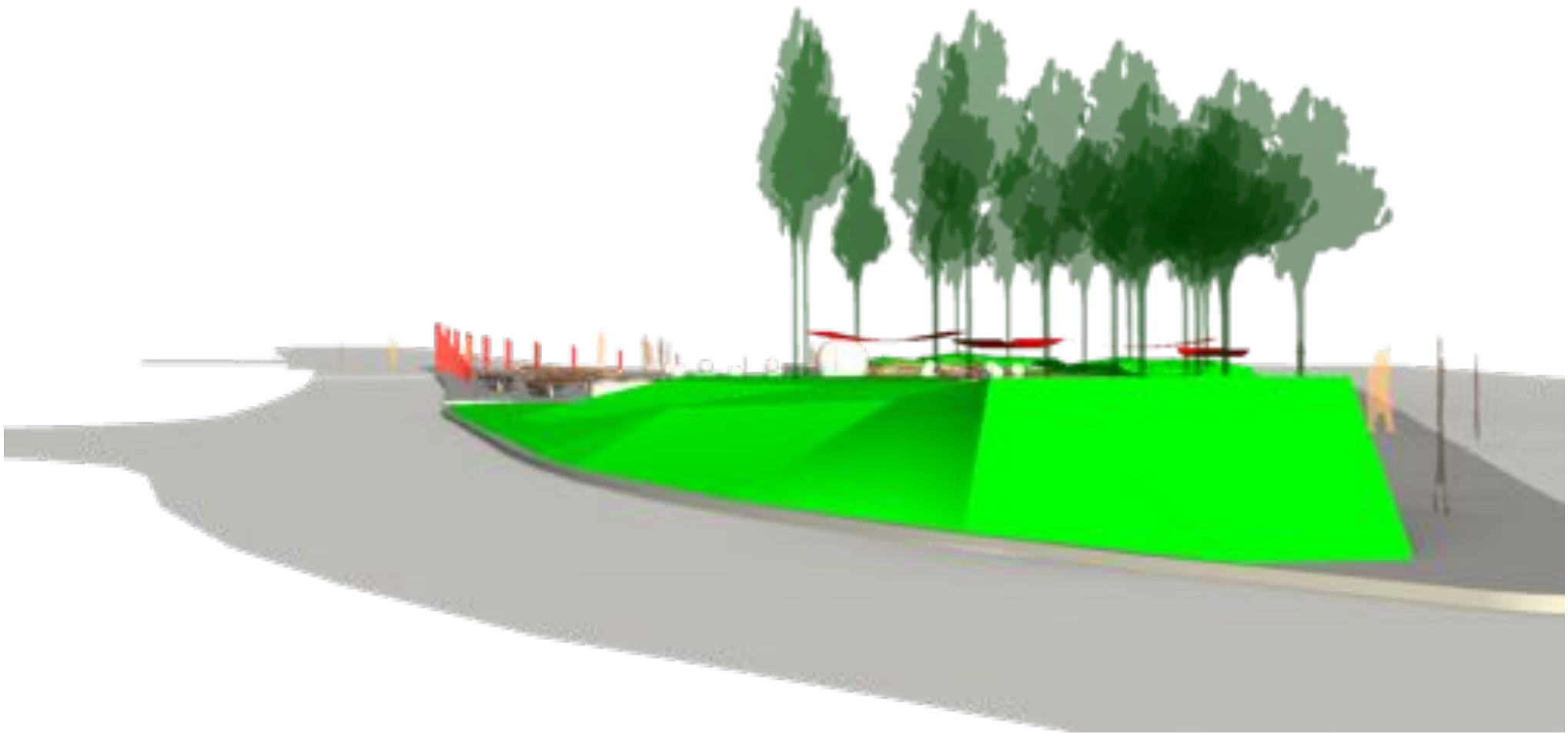
Herzog and de Meuron – Laban Dance Center





SHIFTING PLANES











West 8 - Hammock Grove



GARDEN



Kathryn Gustafson / Piet Oudolf - Lurie Garden

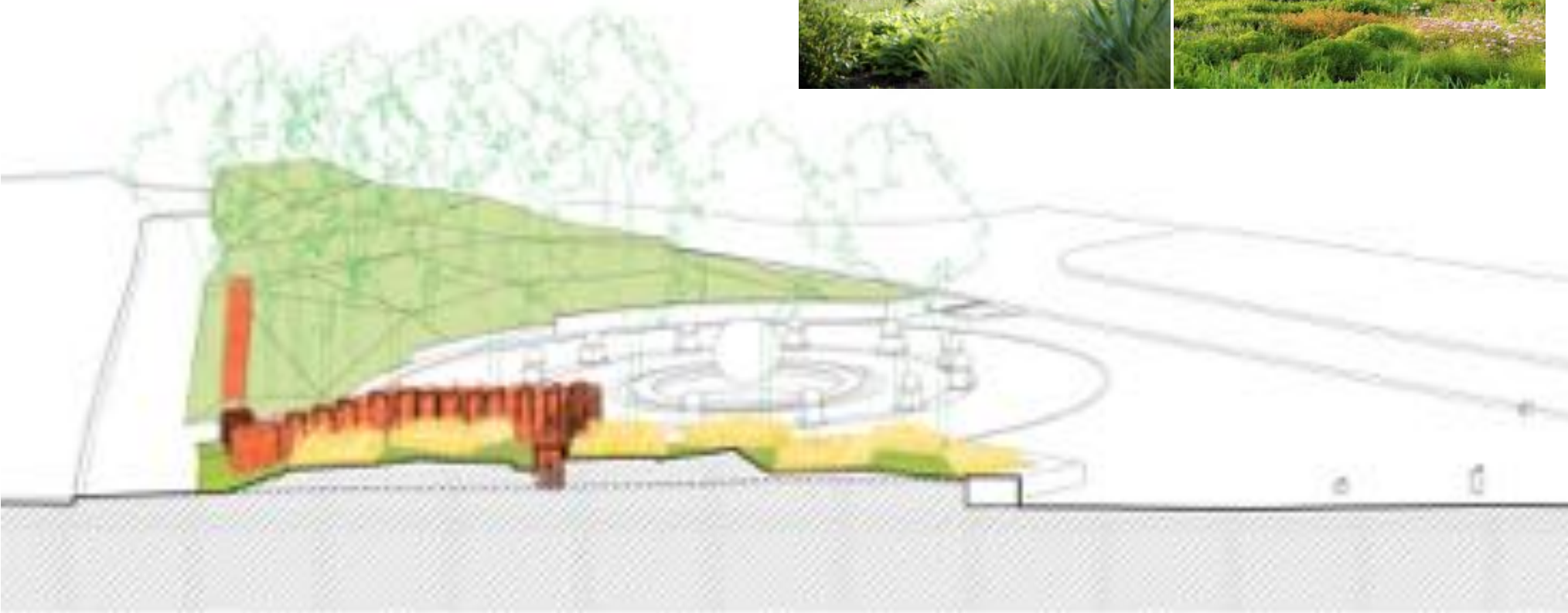


Wintergreen/bunchberry



Red + Yellow Osier Dogwood





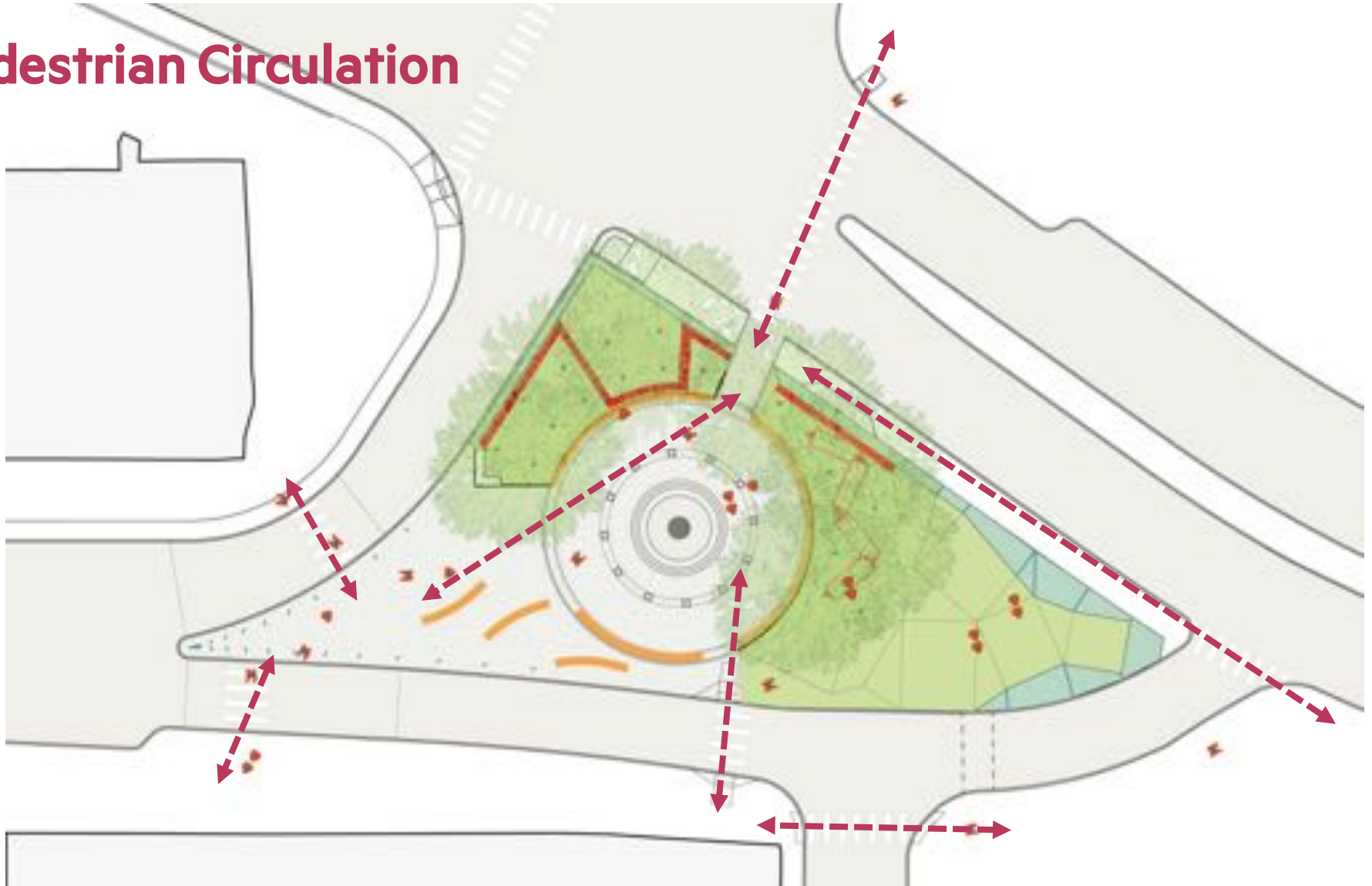


PLAZA

Stoss - The Plaza at Harvard



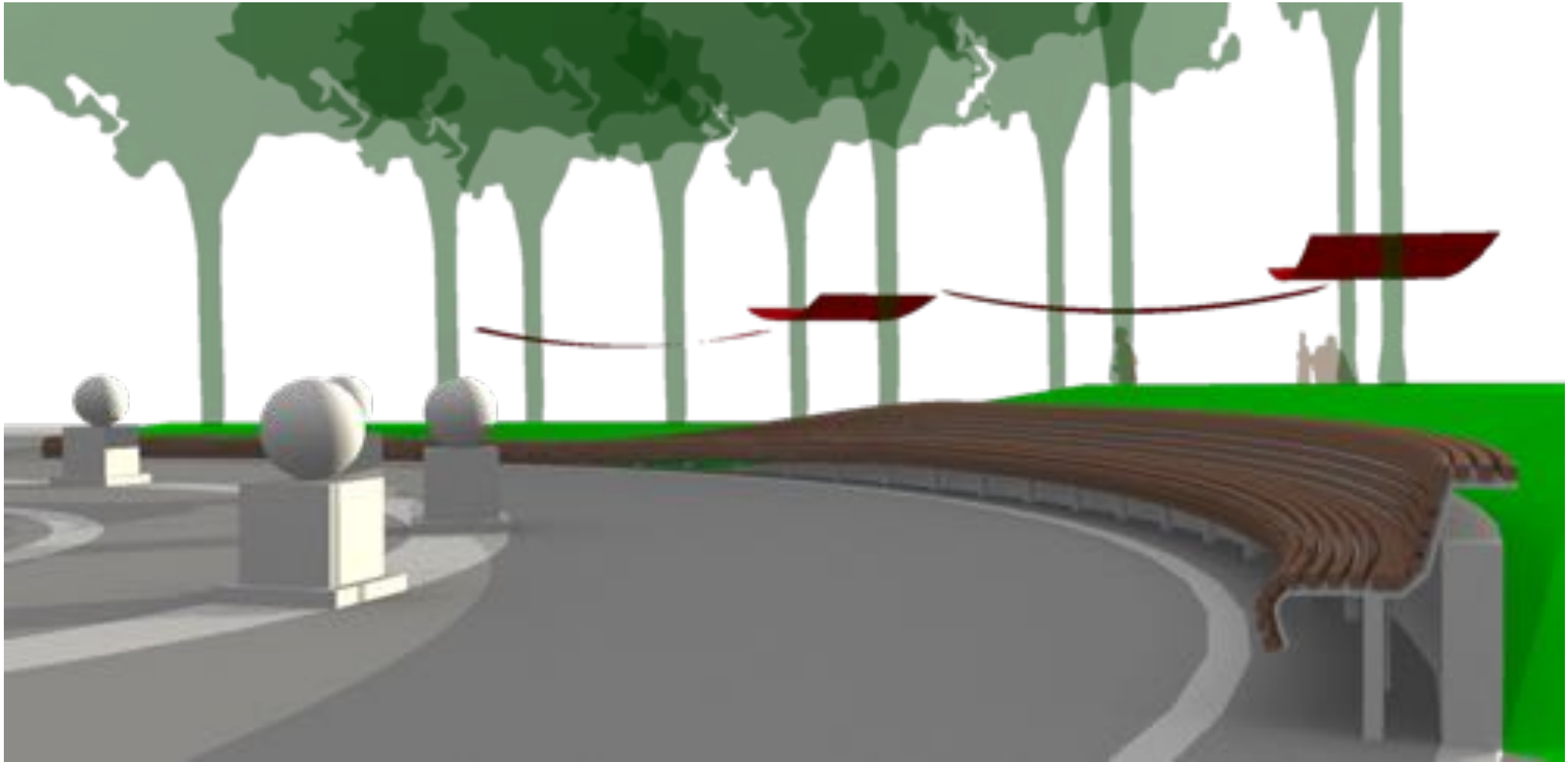
Pedestrian Circulation

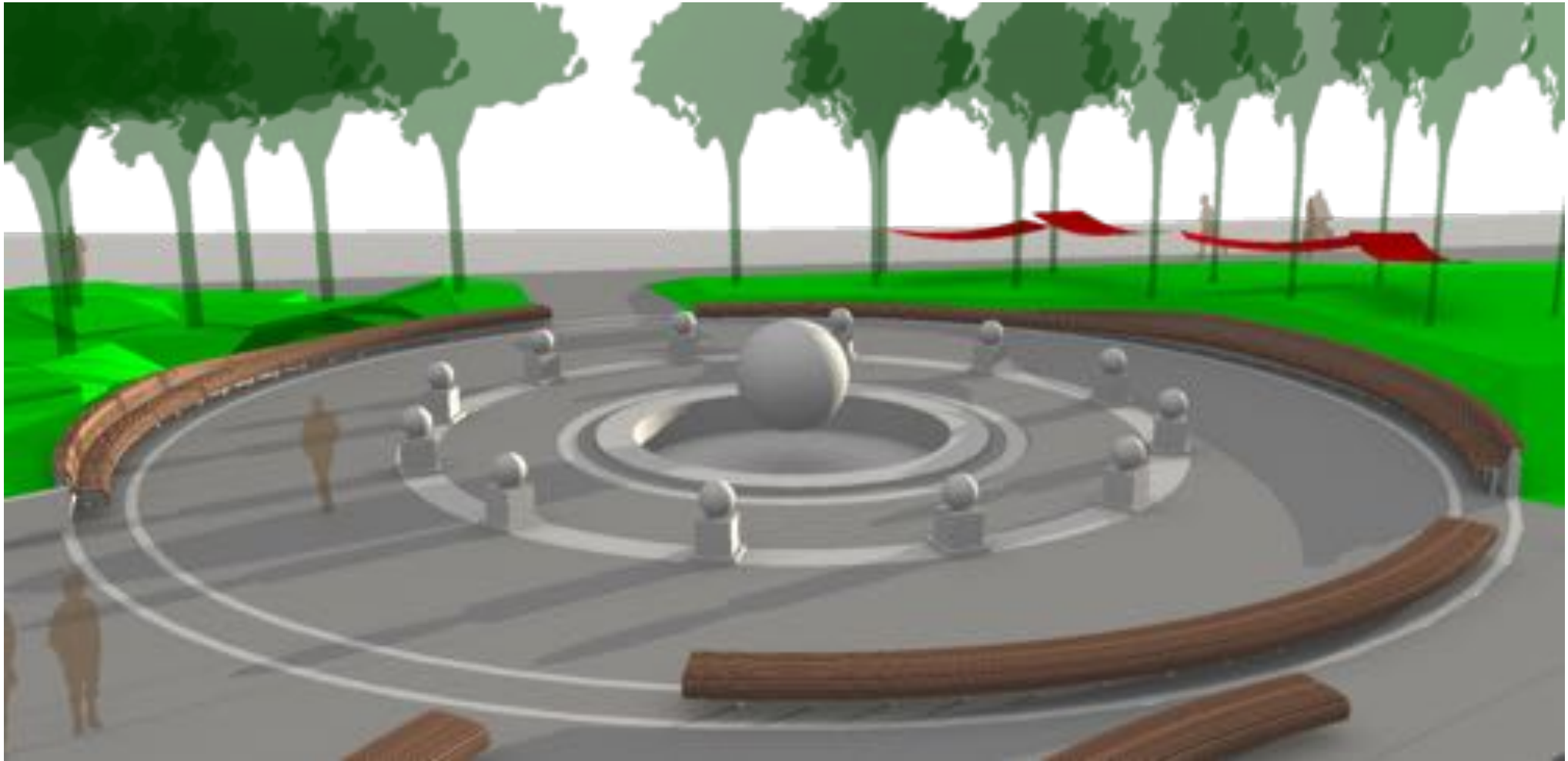




Permanent Seating







Movable Seating



Landscape Forms: Parc Center Chair



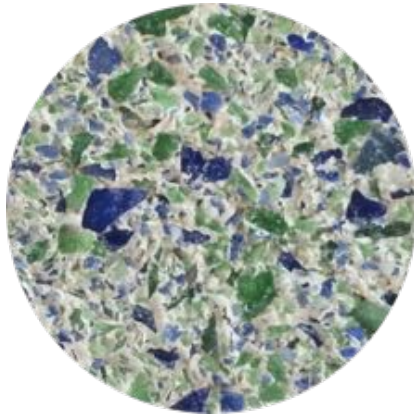
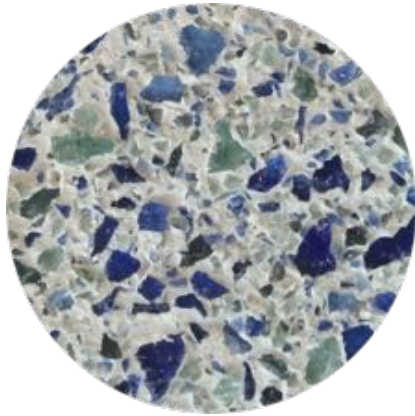
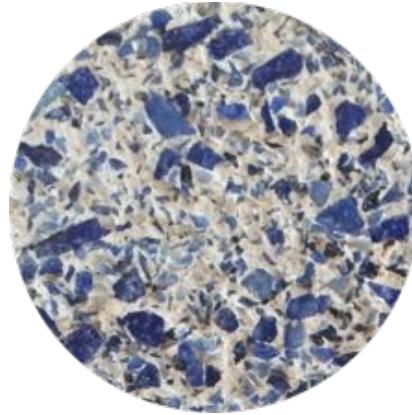
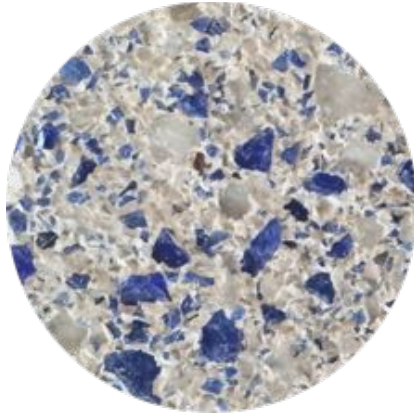






Daan Roosegaarde - 'Starry Night' Bike Path

Paving: Wasau Recycled Glass Pavers



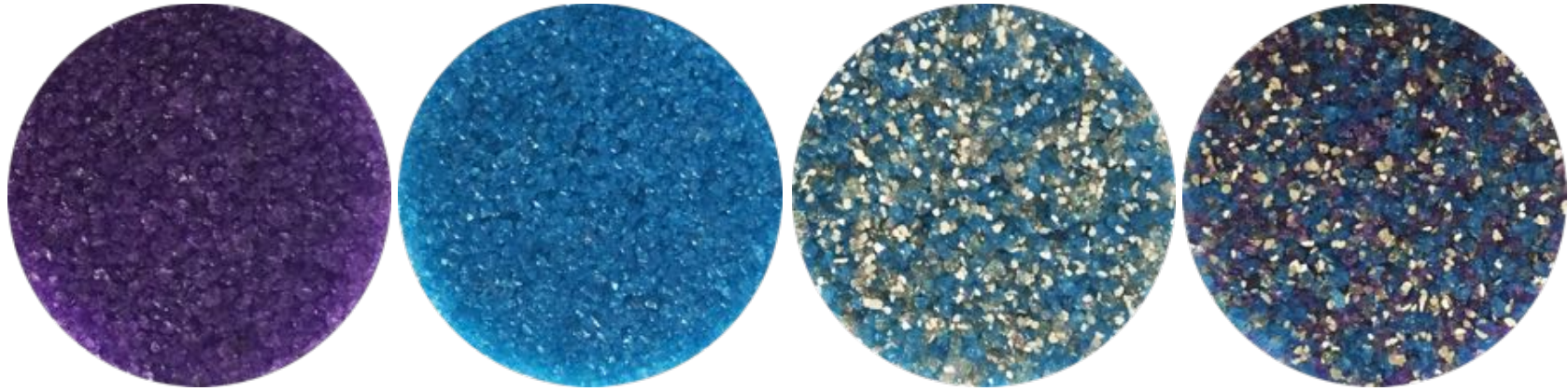
White: \$10.95 – \$13.35 per sq ft

Blue: \$19.95 - \$22.95 per sq ft

Blue/Green: \$14.95 – \$18.20 per sq ft

% color and aggregate can be customized

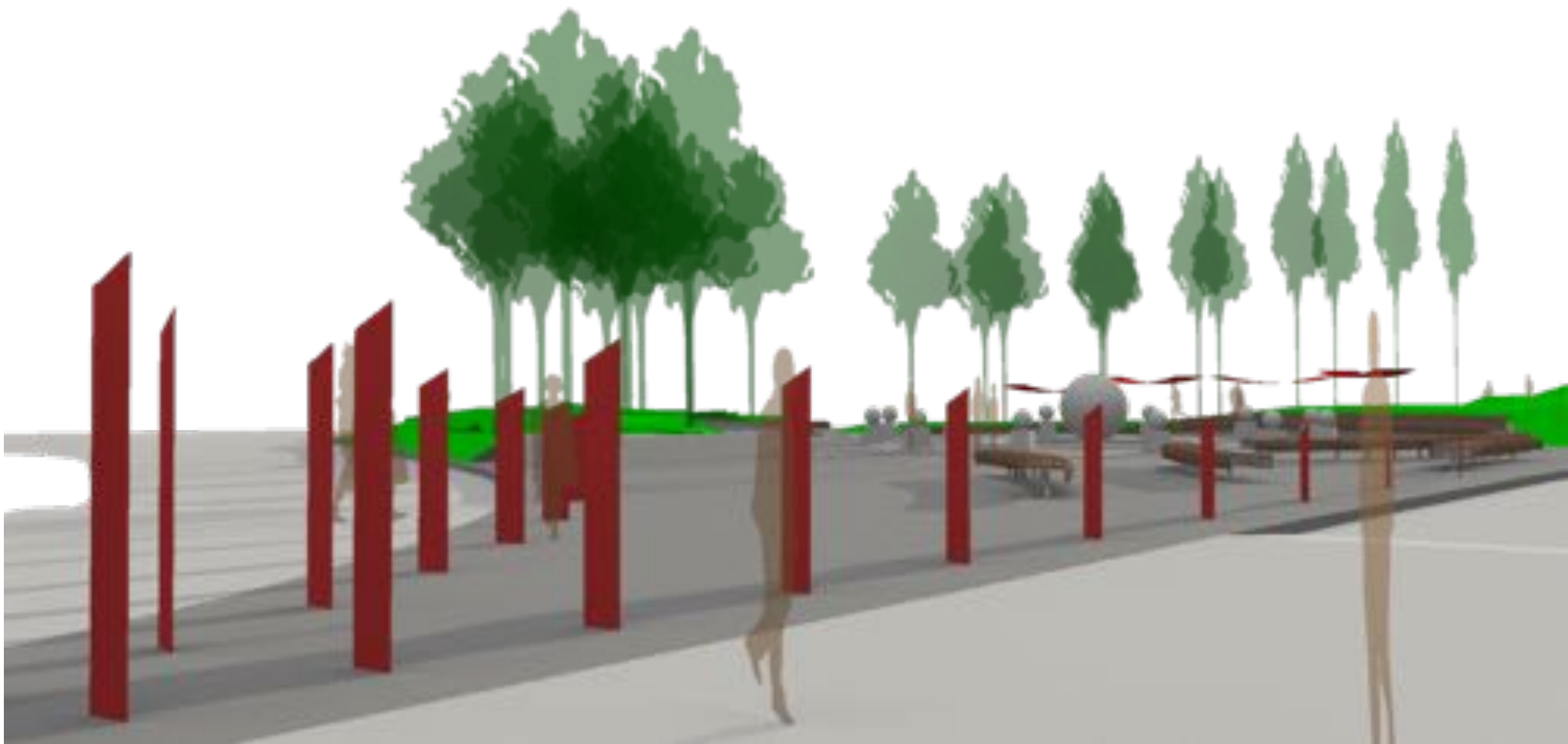
Paving. Sureset Resin-bound Glass

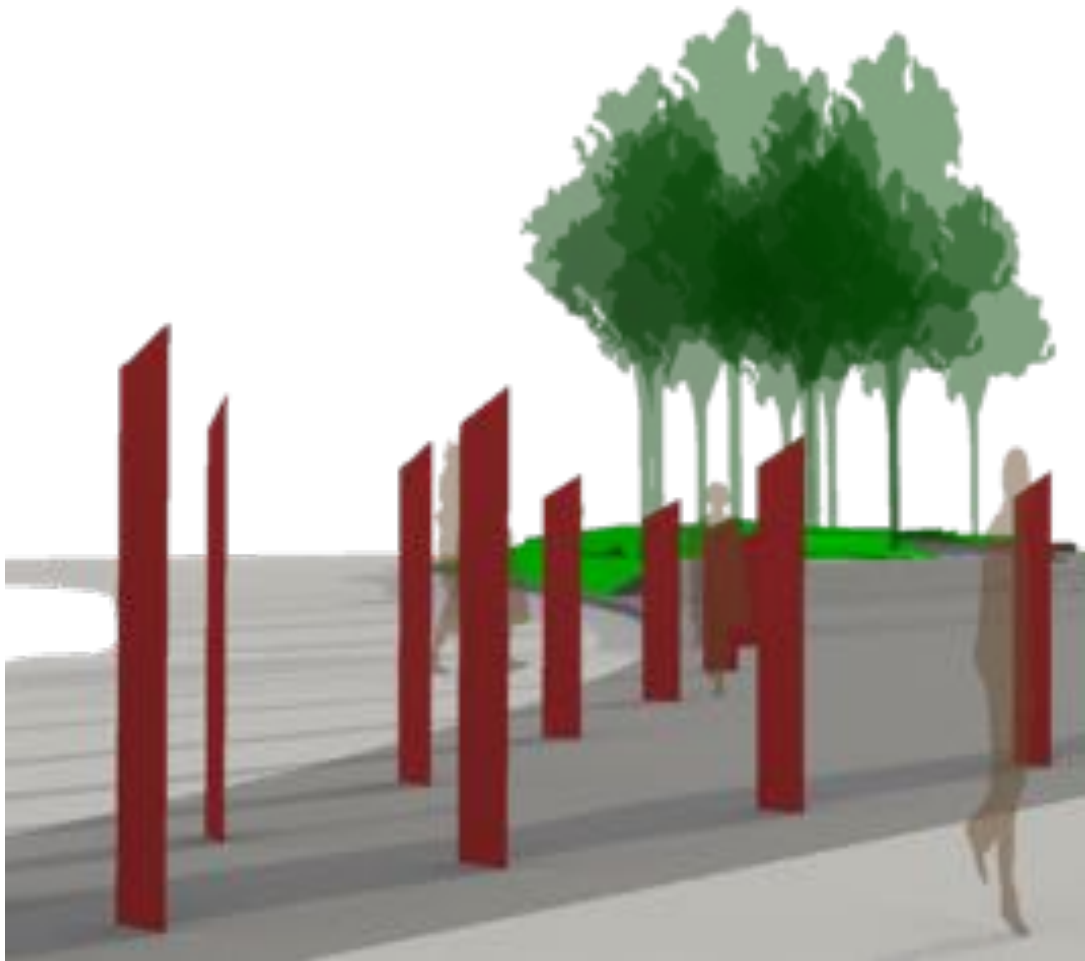


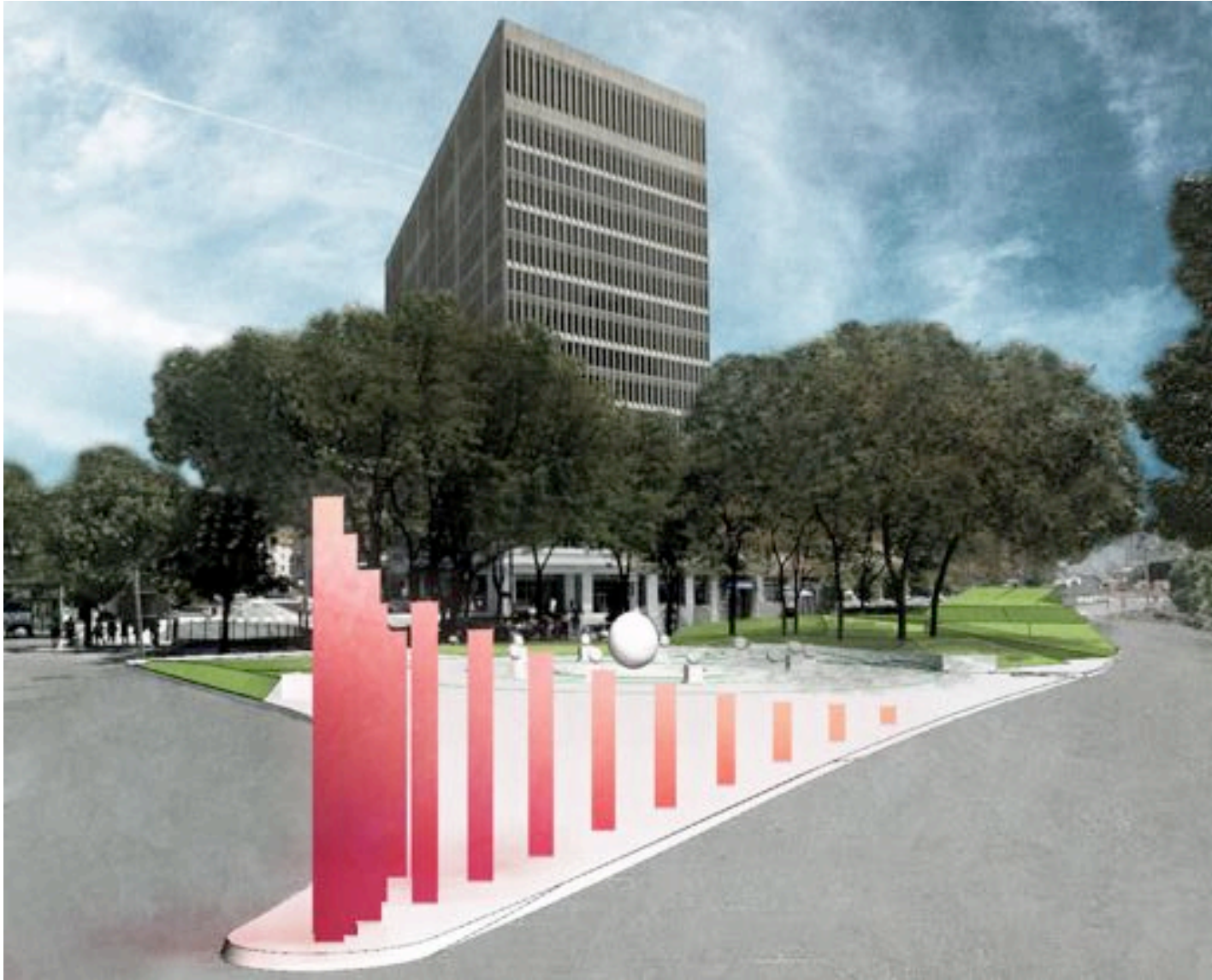
Paving. Filter Pave



\$12 – \$15 per sq ft
Colors somewhat customizable













INTERACTIVITY

Höweler + Yoon - Aviary



1 GOOGLE CENTER CAMBRIDGE



2 J&J INNOVATION CENTER



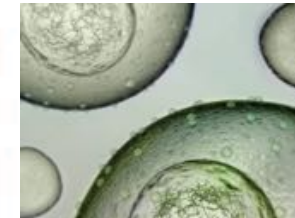
3 MOMENTA PHARMACEUTICALS INC.



4 LE LABORATOIRE



5 BIOGEN



6 AMGEN



6 MASSACHUSETTS INSTITUTE OF TECHNOLOGY



7 CAMBRIDGE INNOVATION CENTER

- KENDALL T STATION
- OPEN SPACE SITES
- ROGERS ST PARK
- MIT

- ENERGY
- TTDATA
- BIOPHARMA
- RAILROAD







SOMBER



HAPPY



HISTING INTENSITY



LIGHT INTENSITY



Invidia - Mimmi



Höweler + Yoon – White Noise White Light



Höweler + Yoon – White Noise White Light



NUMEN
"NET BLOW UP YOKOHAMA"



PAUL STREITZ
"ART AND LIGHT"



STUDIO KNOL
"TRANSIT MANTRA"



KROON HALL YALE UNIVERSITY
RAINWATER GARDENS



JEN LEWIN
"THE POOL"



SMART CITY DUBAI
SILICON OASIS



MBTA RED LINE



DILLER SCOFIDIO + RENFRO
HYPAR PAVILION





URBAN RHYTHM

Subway stations--the constant interface between the surface and subsurface, a maelstrom of arrivals and departures, operators' coded signals, schedules and chatter, announcements and emotions, and a continuous flow of users--become a prime site at which to tap into the beat of the city--it's VIBE.

mon

tues

wed

thurs

fri

sat

sun



rush hour

weekday downtime

rush hour



weekday downtime

weekend
late night

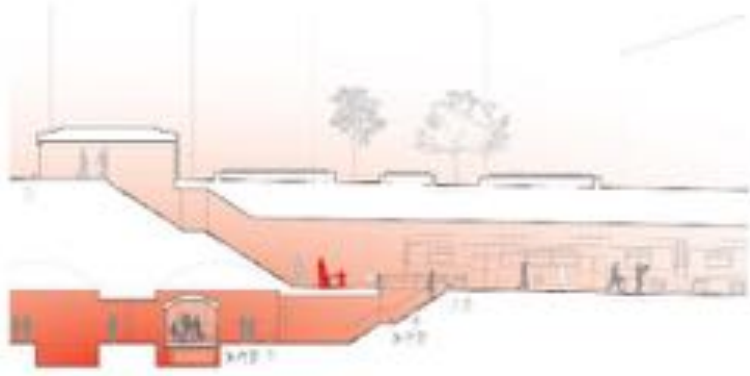
weekend
downtime

weekly cycles

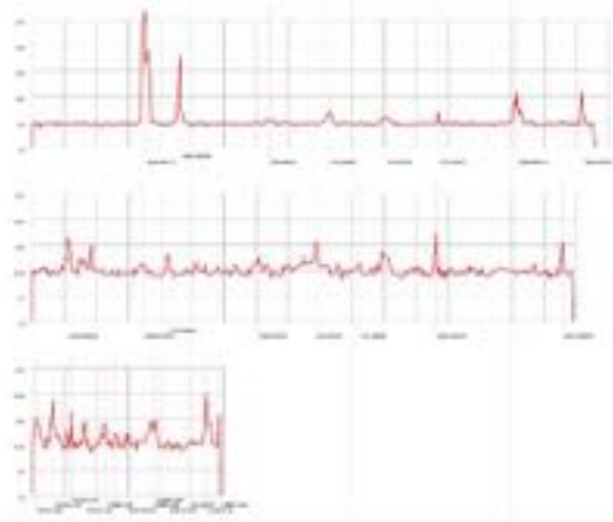
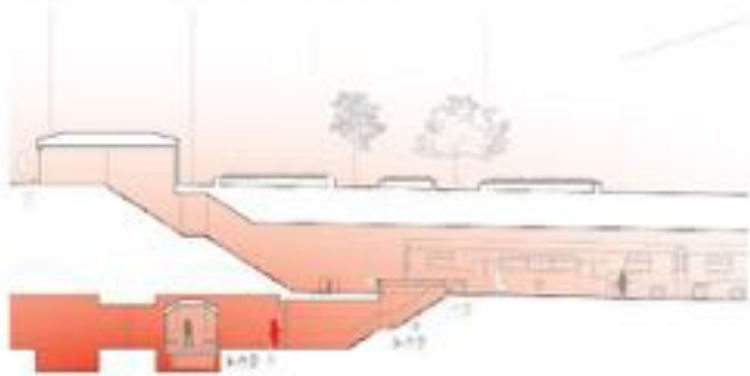
RED LINE
OUTBOUND



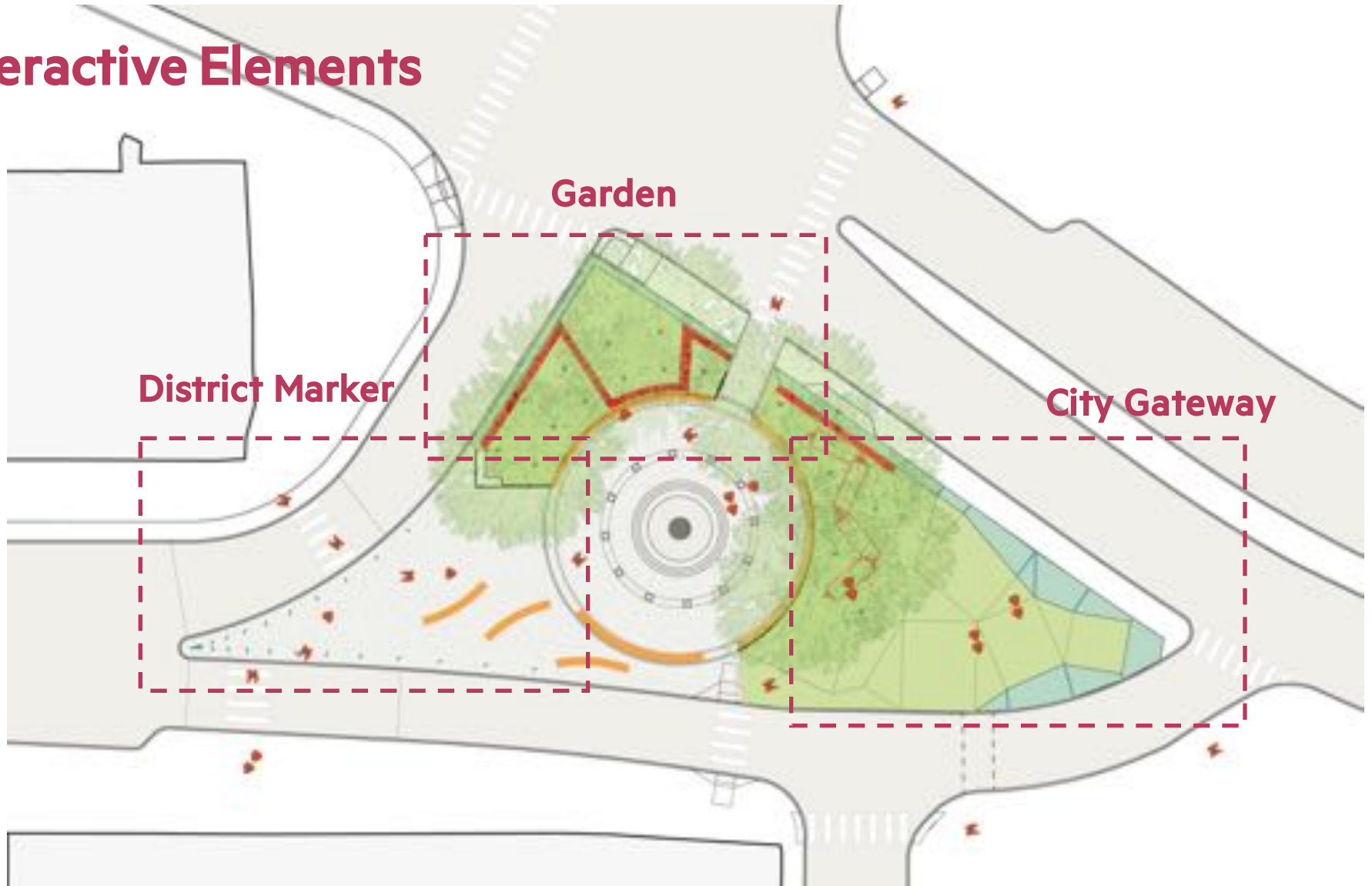
WEEKDAY RUSH

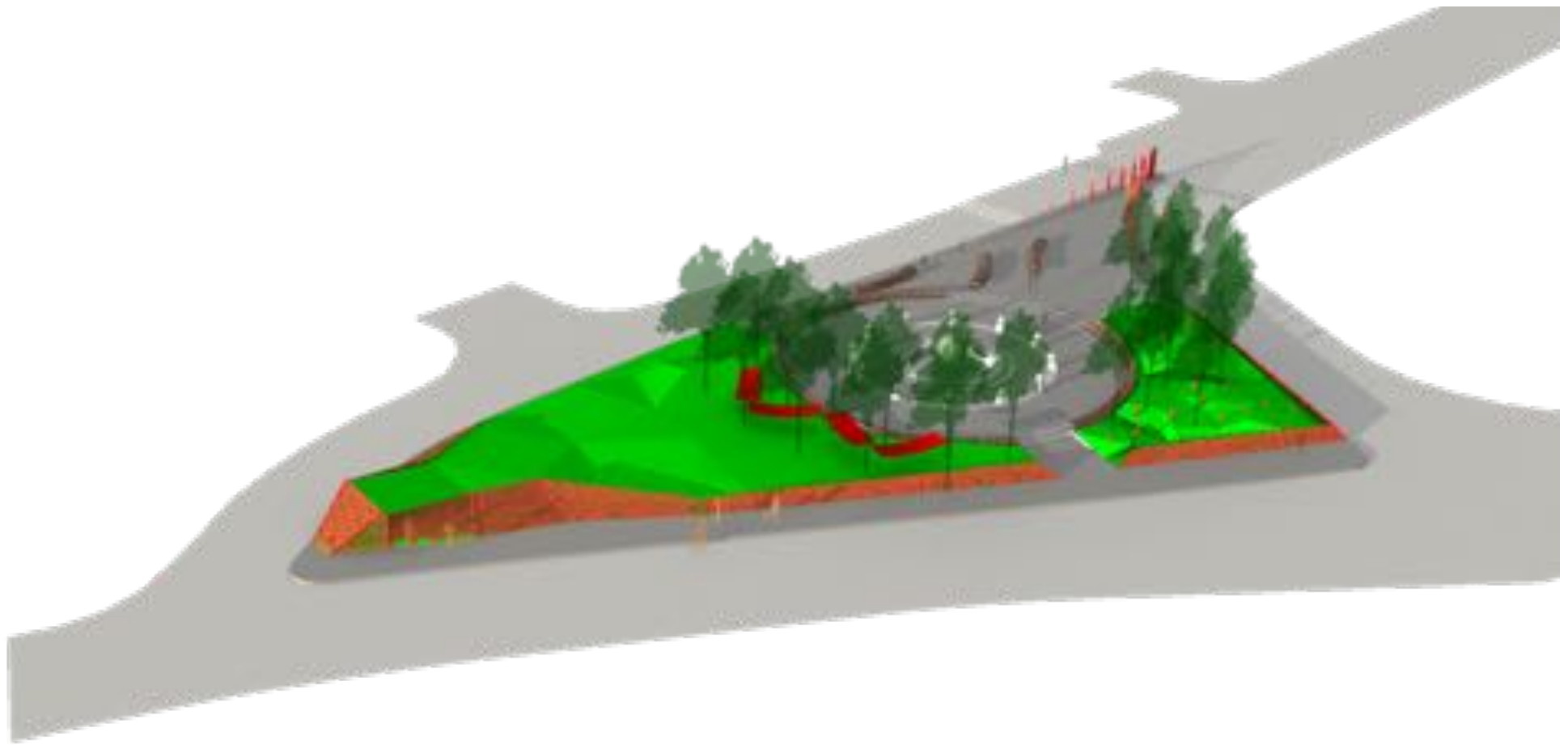


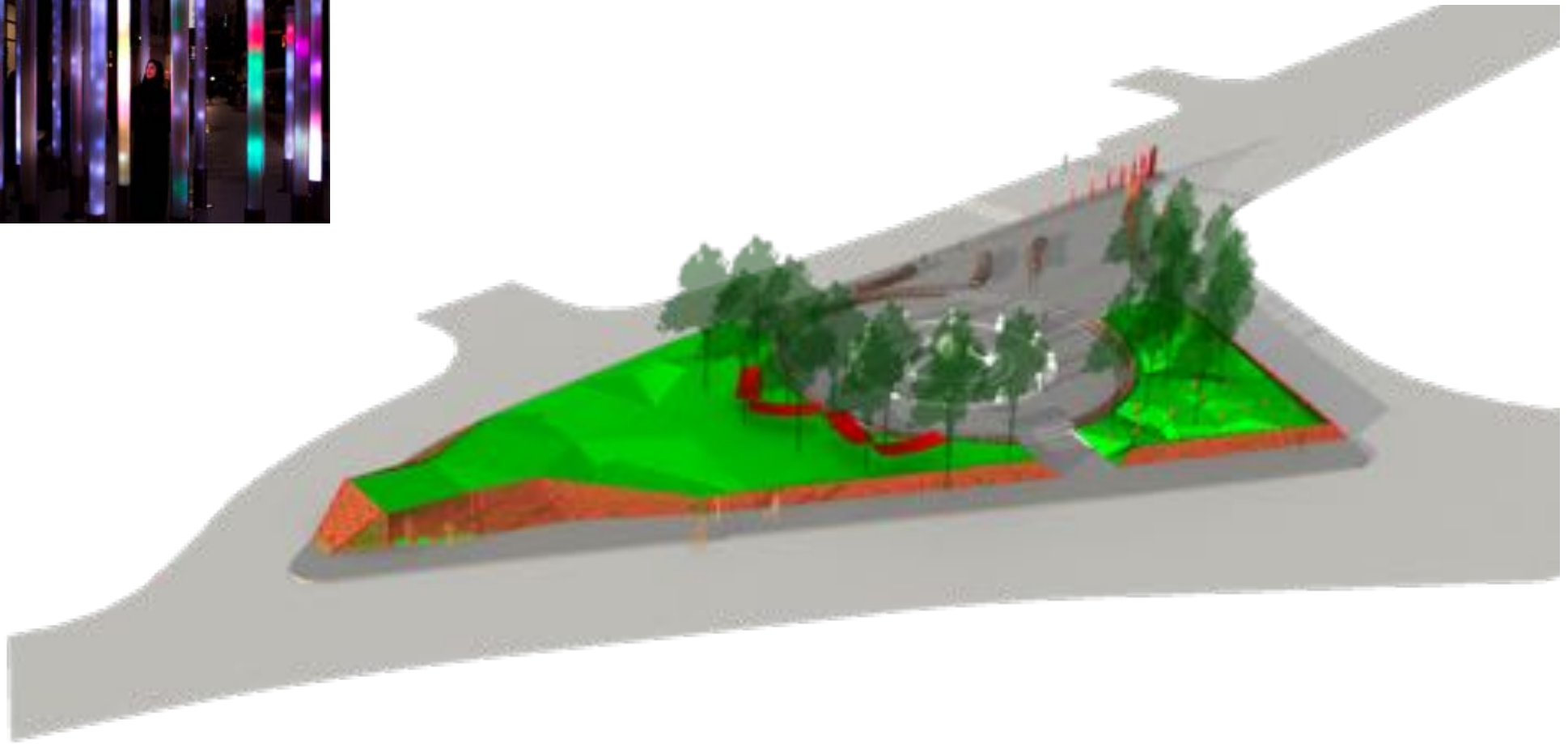
WEEKDAY OFF-PEAK



Interactive Elements

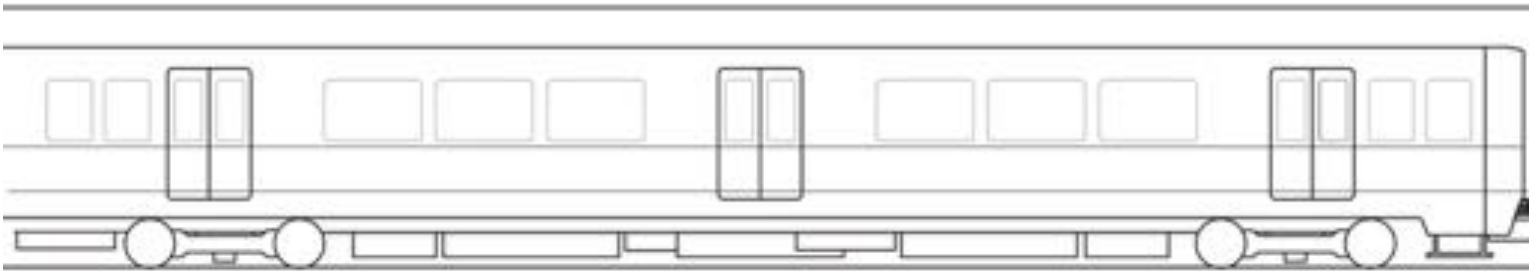






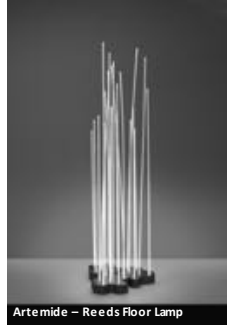




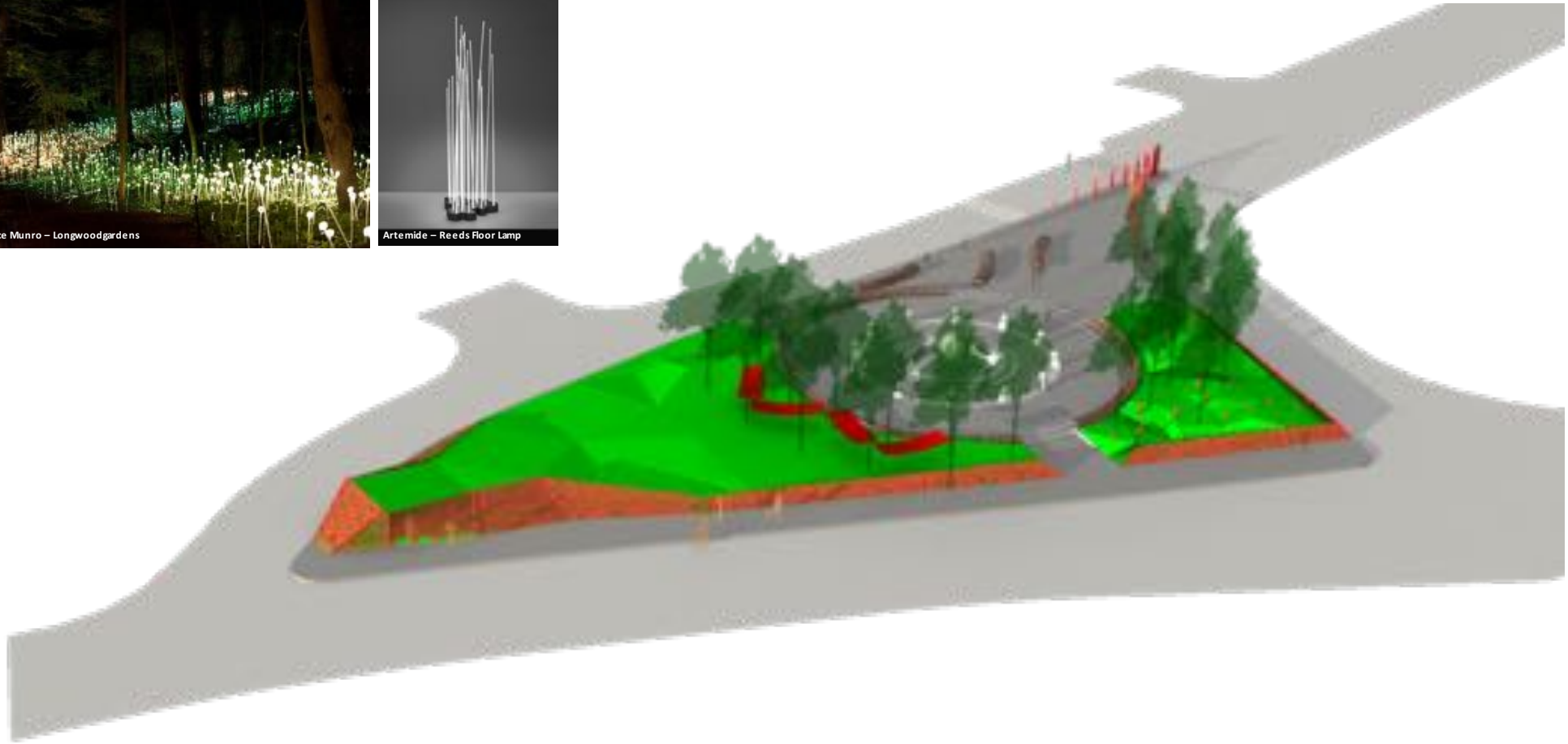


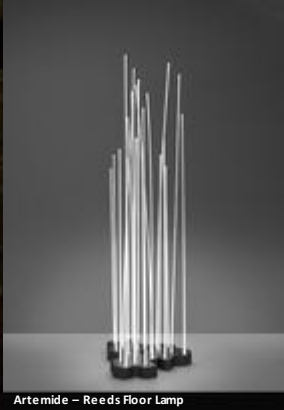


Bruce Munro - Longwoodgardens



Artemide - Reeds Floor Lamp

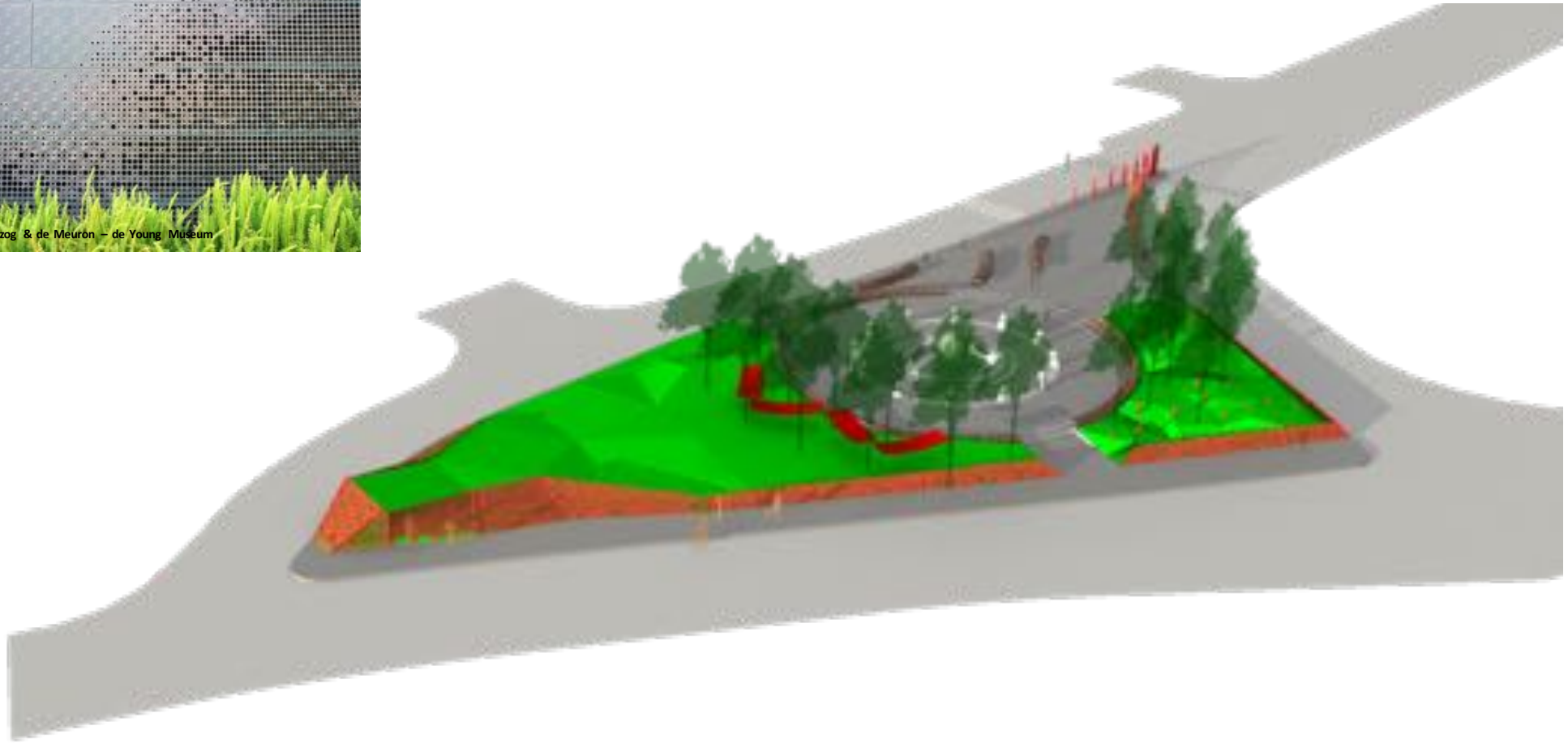
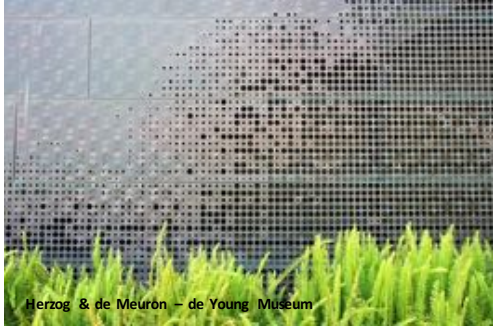




Artemide – Reeds Floor Lamp



Bruce Munro – Longwood gardens





Coen + Partners – Westminster Presbyterian Church



Coen + Partners – Westminster Presbyterian Church



Nieto Sobejano – San Telmo Museum



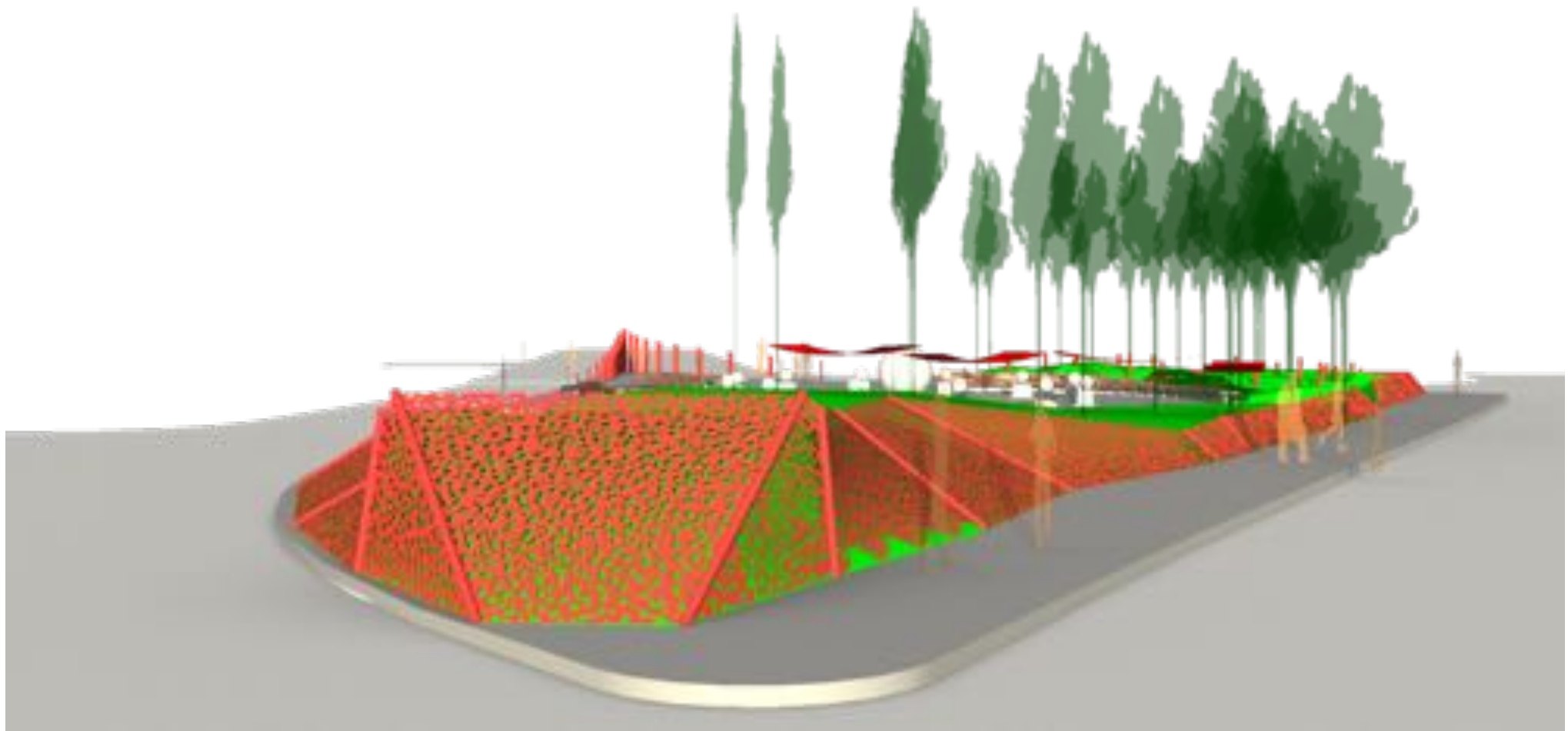
Herzog & de Meuron – de Young Museum

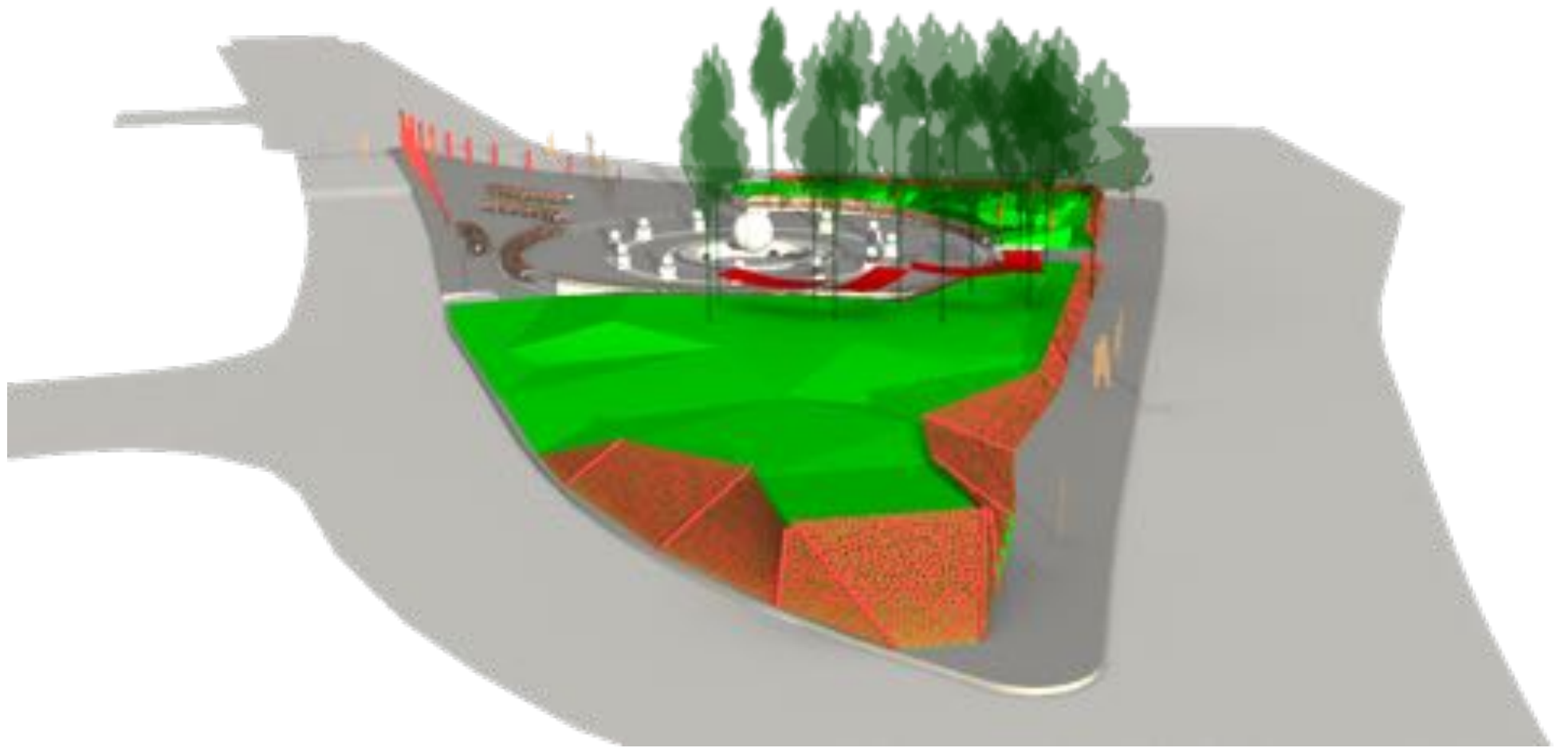


MLZD – Stadtmuseum Rapperswil-Jona



Nieto Sobejano – San Telmo Museum





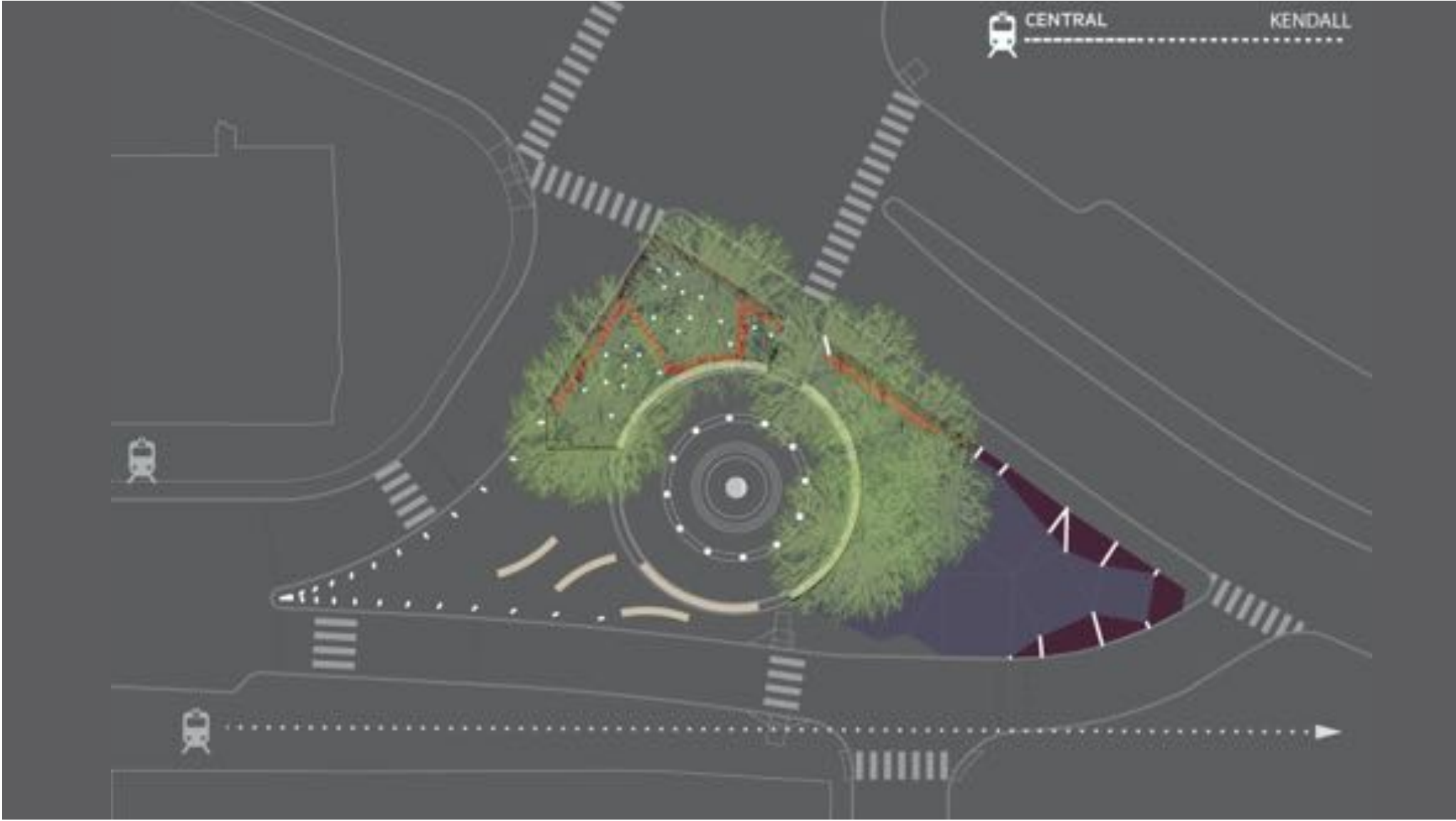








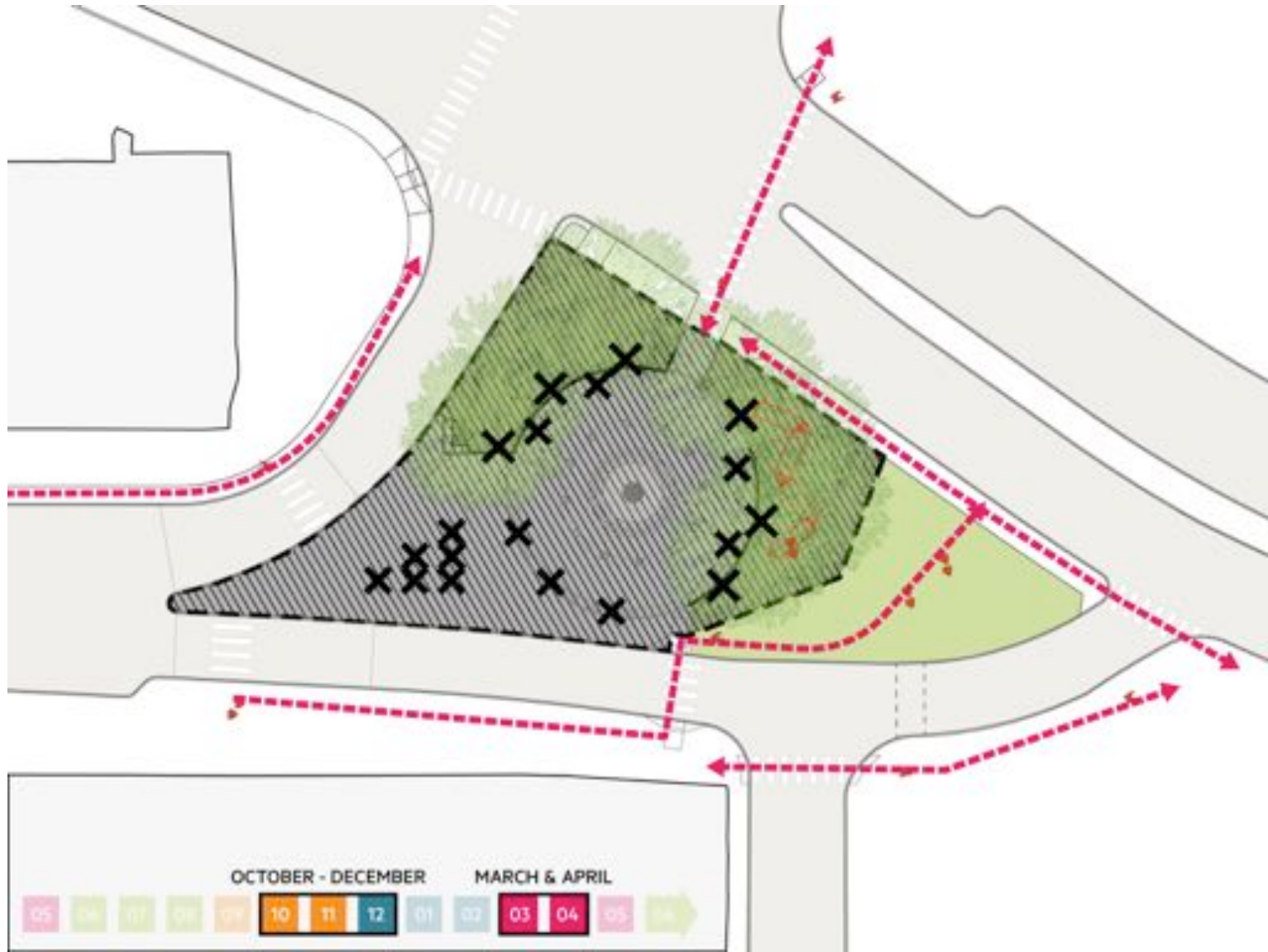








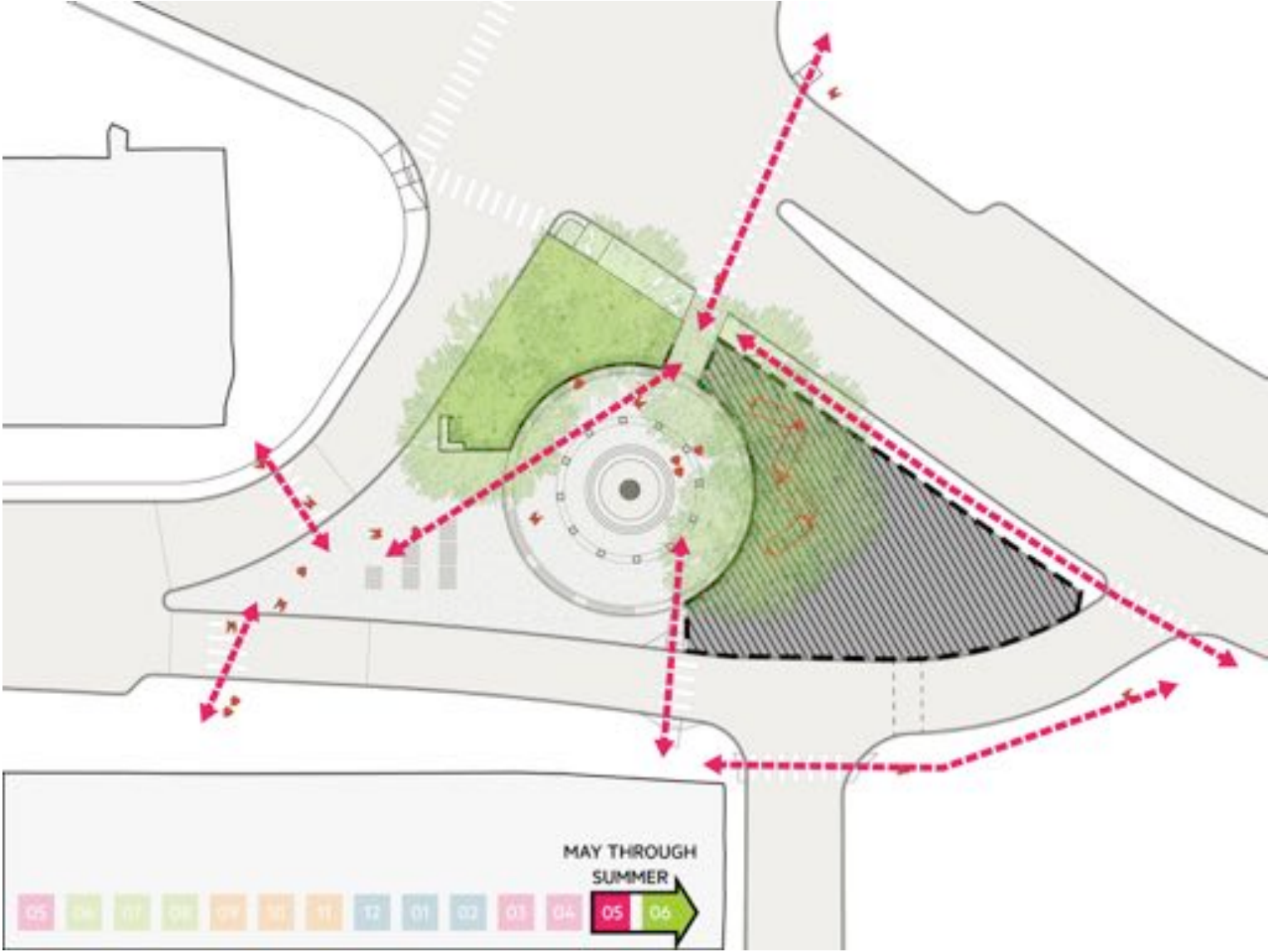


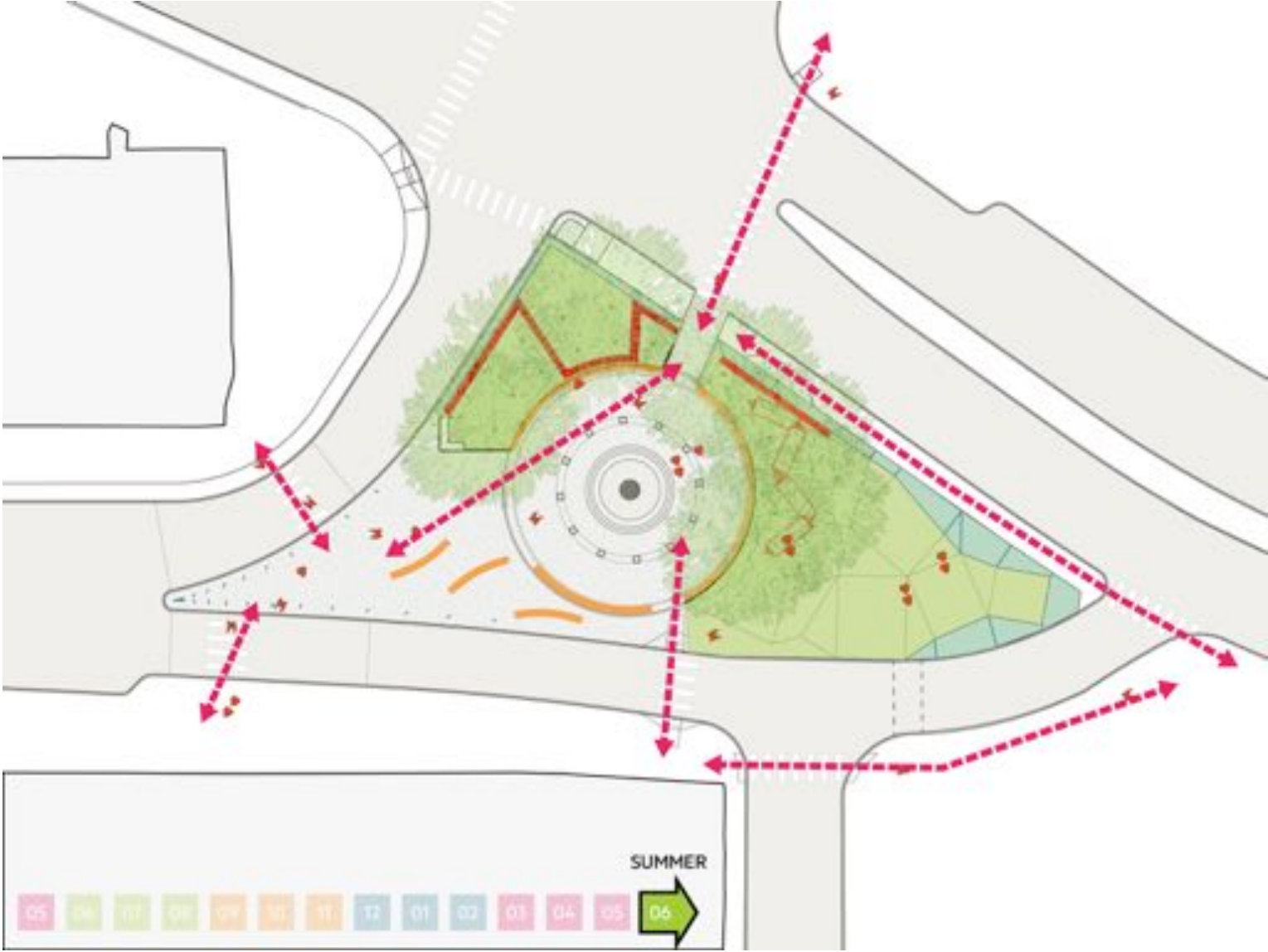


OCTOBER - DECEMBER

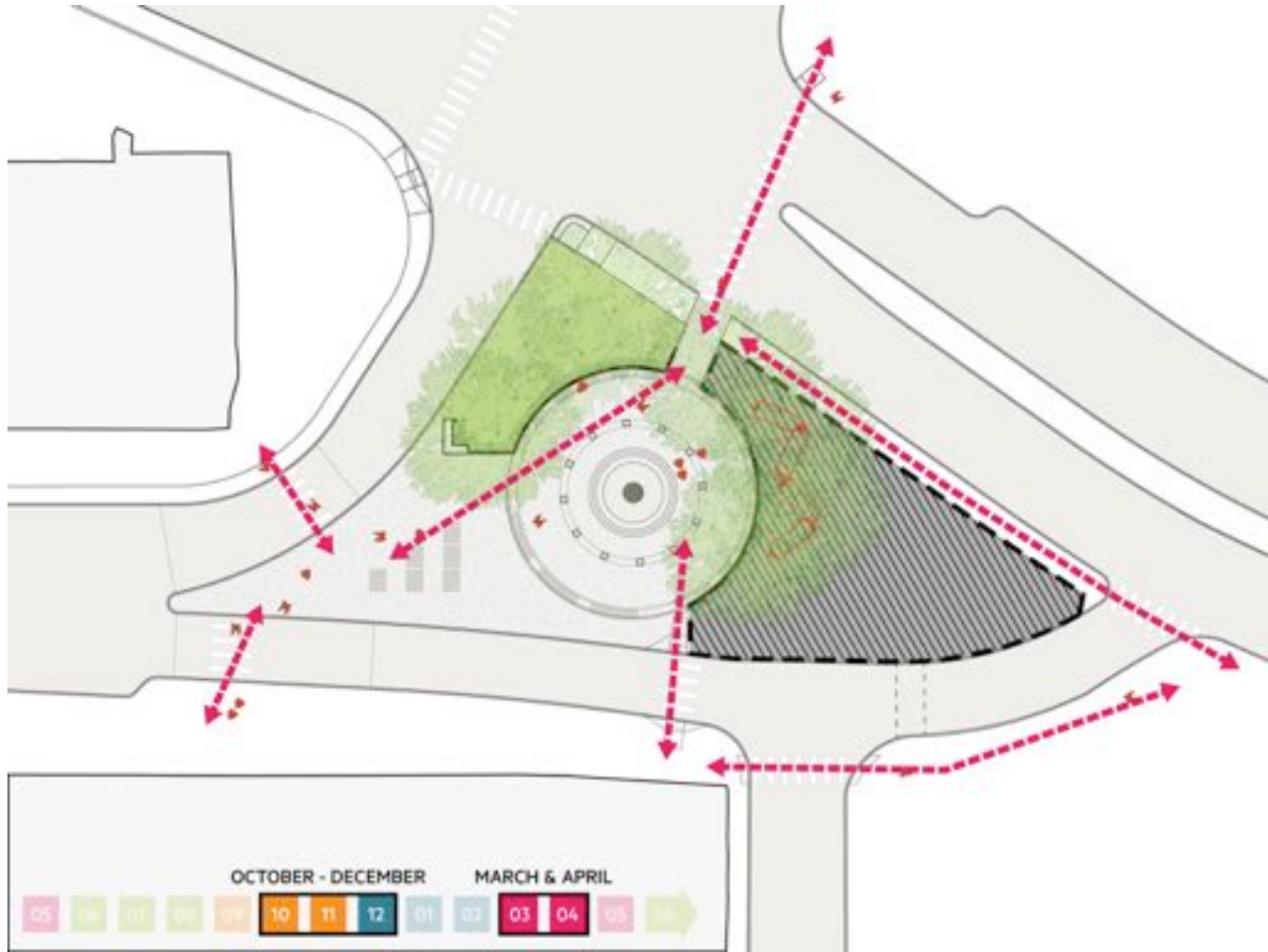
MARCH & APRIL



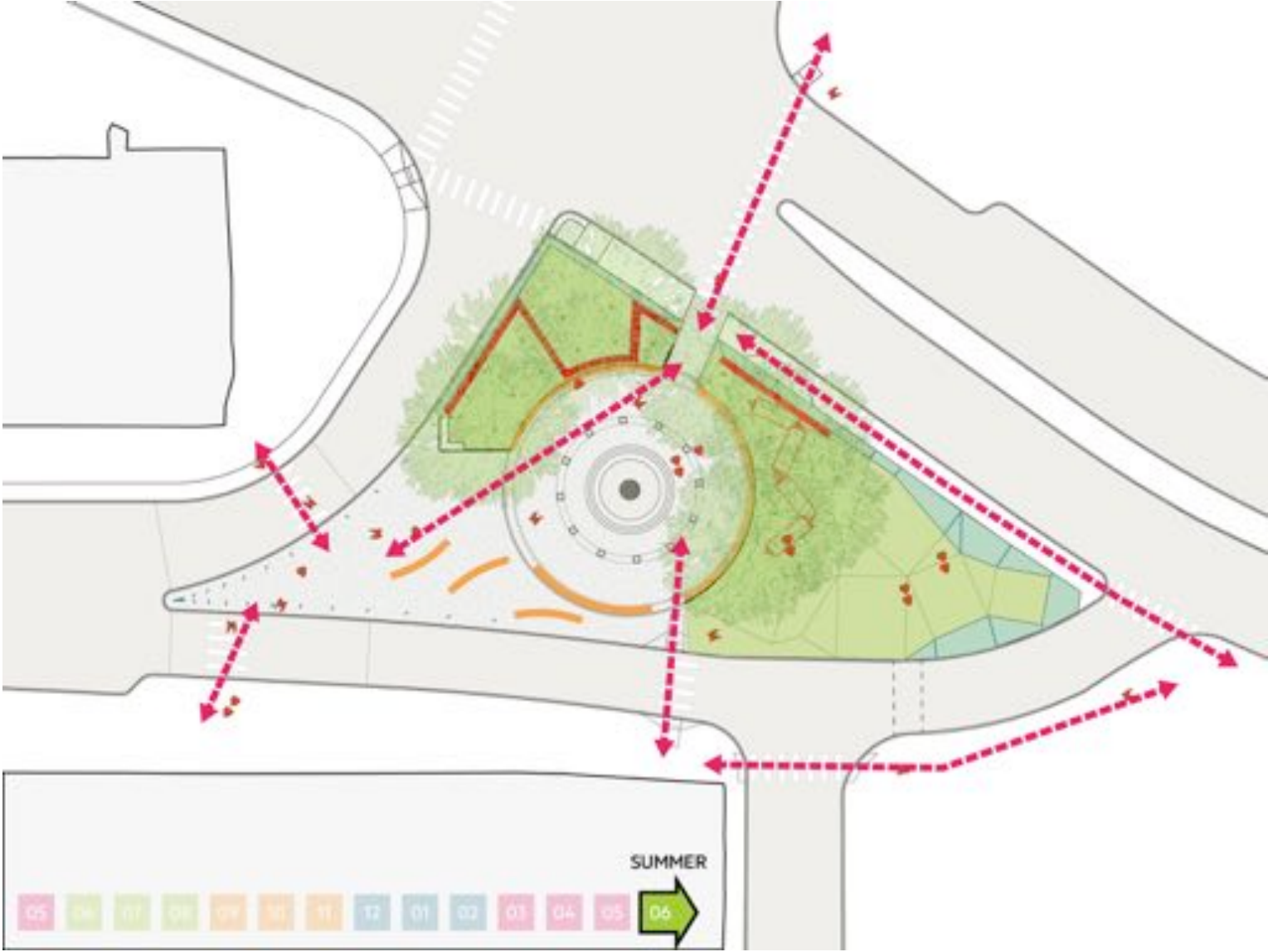


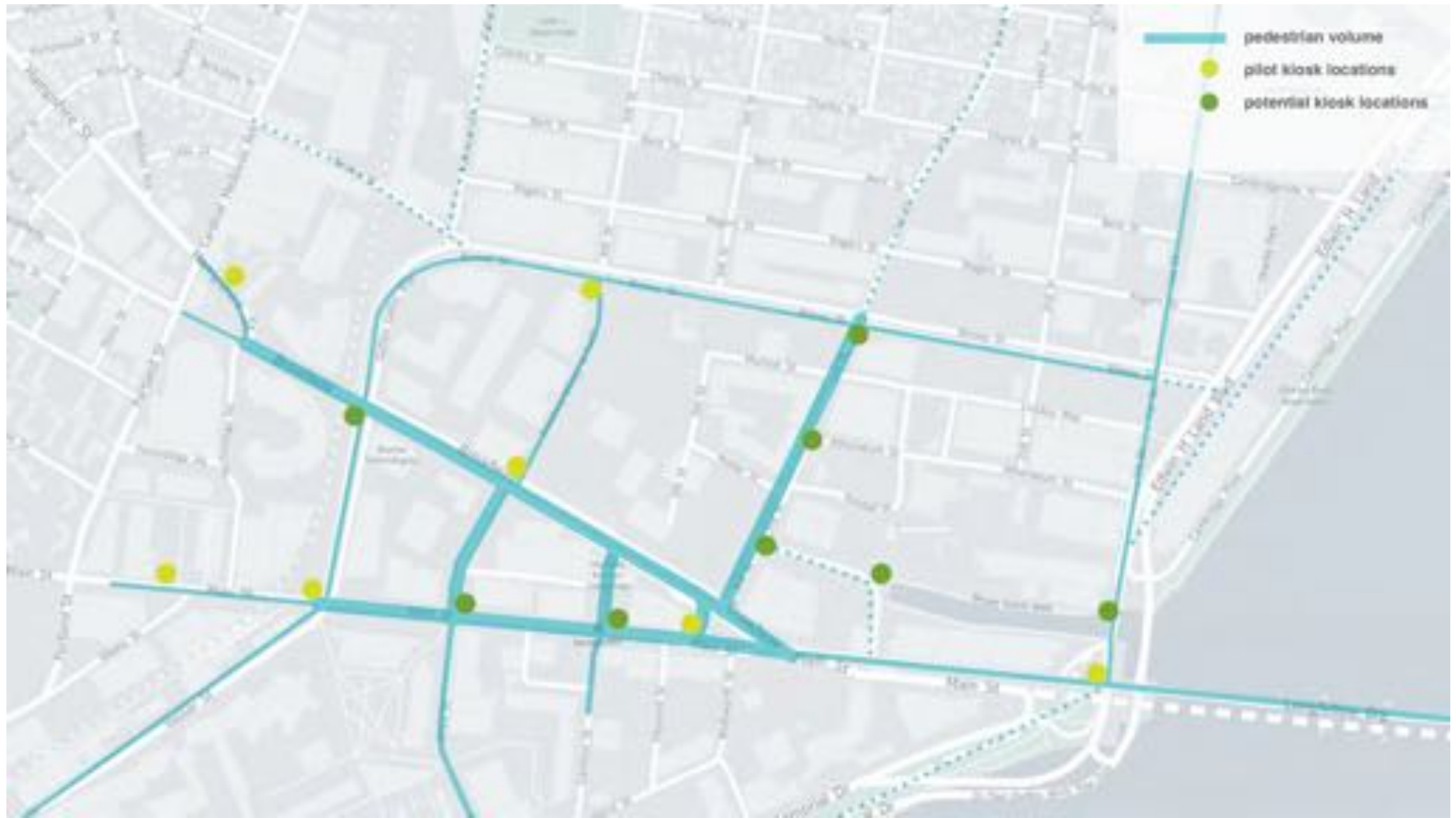




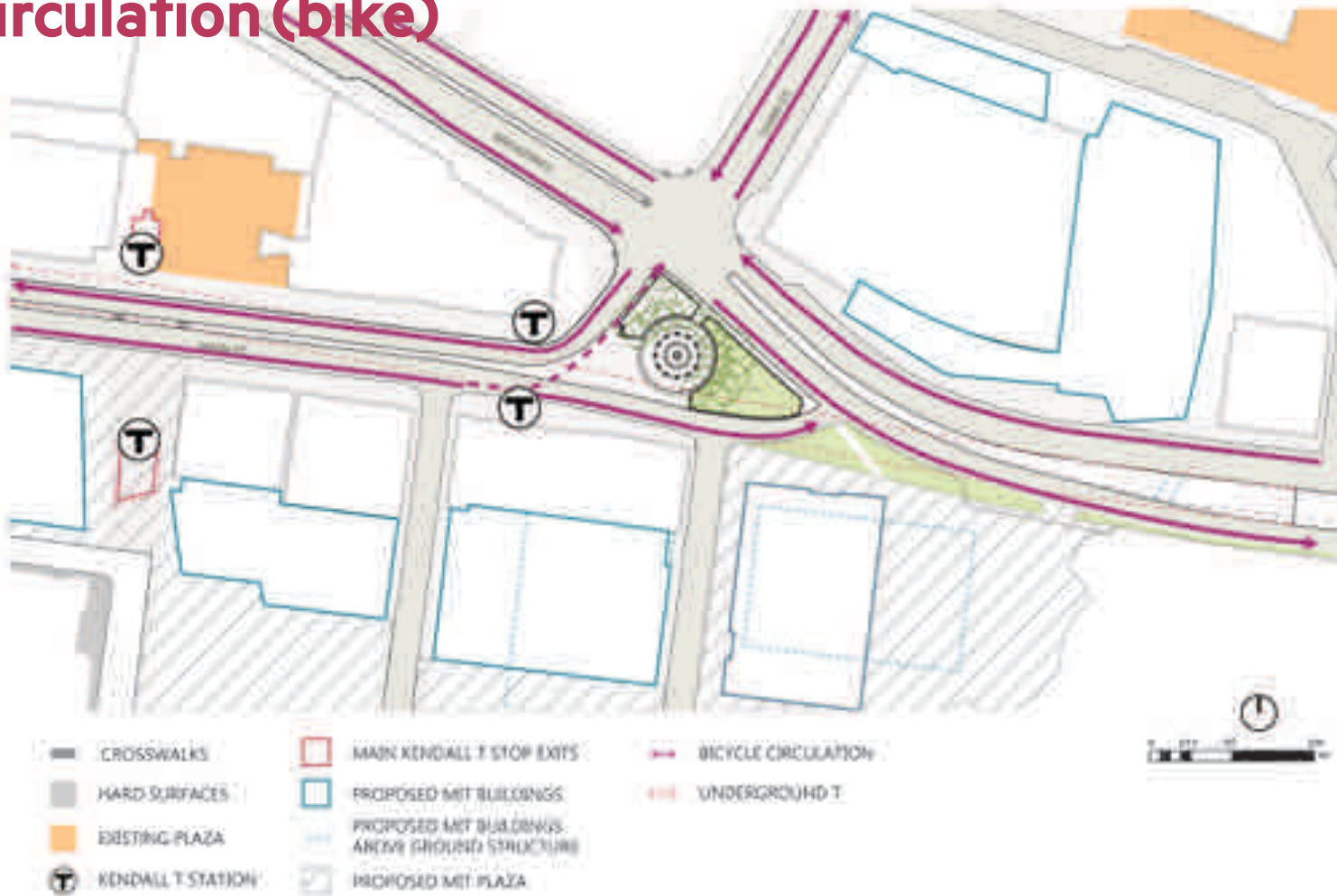


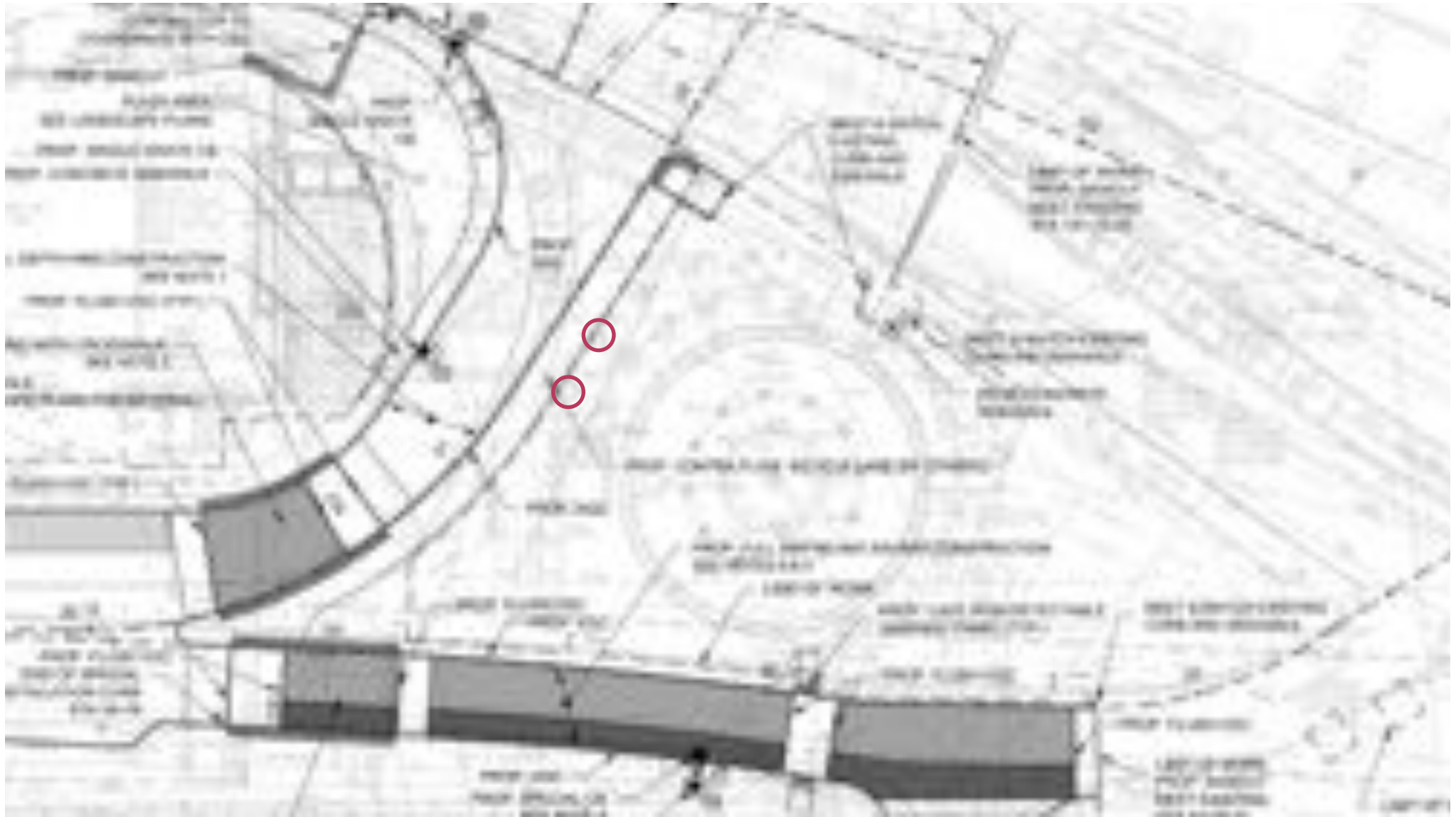






Area Circulation (bike)









An aerial photograph of a circular park plaza. In the center is a large, ornate fountain with a tiered structure and a central globe-like element. The plaza is paved and surrounded by a low wall with several benches. A person is walking on the plaza. The background shows some trees and a dark area, possibly a body of water or a shadowed area.

STOSS

POINT PARK CONCEPTS

APRIL 12, 2016