

An architectural rendering of a modern, multi-story building with a glass facade, likely the MBTA Headhouse. The image is overlaid with a semi-transparent red filter. The building features a prominent cantilevered upper section. In the foreground, there is a street scene with a bus, a car, a person with a bicycle, and several pedestrians. A 'T' transit sign is visible on a pole. To the right, another tall building is partially visible, and a large tree stands in the foreground. The overall scene is a detailed architectural visualization of an urban transit hub.

MBTA HEADHOUSE REVIEW

EXISTING CONDITIONS PHOTOS



SOUTHEAST CORNER OF 325 MAIN STREET BUILDING



SOUTHWEST CORNER OF 325 MAIN STREET BUILDING

EXISTING CONDITIONS PHOTO



OVERALL VIEW FROM MAIN STREET

EXISTING CONDITIONS PHOTOS



INTERIOR VIEW LOOKING SOUTH



EXTERIOR VIEW LOOKING AT MAIN STREET ENTRANCE

EXISTING CONDITIONS PHOTOS



INTERIOR VIEW DEPICTING ESCALATOR AND STAIR ACCESS

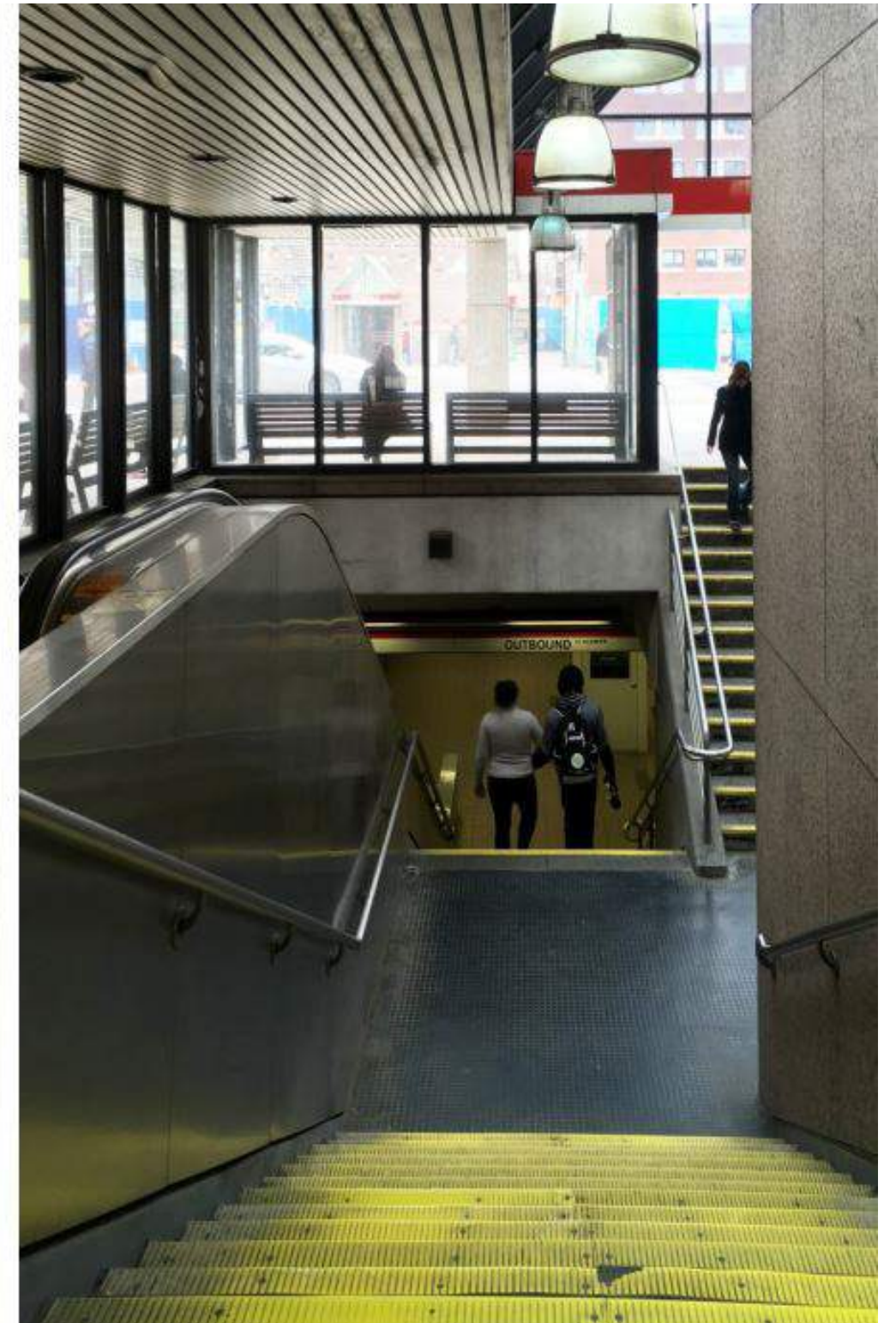


EXTERIOR VIEW DEPICTING EAST FACADE AND BENCHES

EXISTING CONDITIONS PHOTOS



INTERIOR VIEW FROM TRACK LEVEL



INTERIOR VIEW DEPICTING STAIR ACCESS TO TRACKS

DESIGN RENDERINGS - DAY AND NIGHT



DAY VIEW



NIGHT VIEW

DESIGN RENDERING - DAY



DESIGN RENDERING - NIGHT



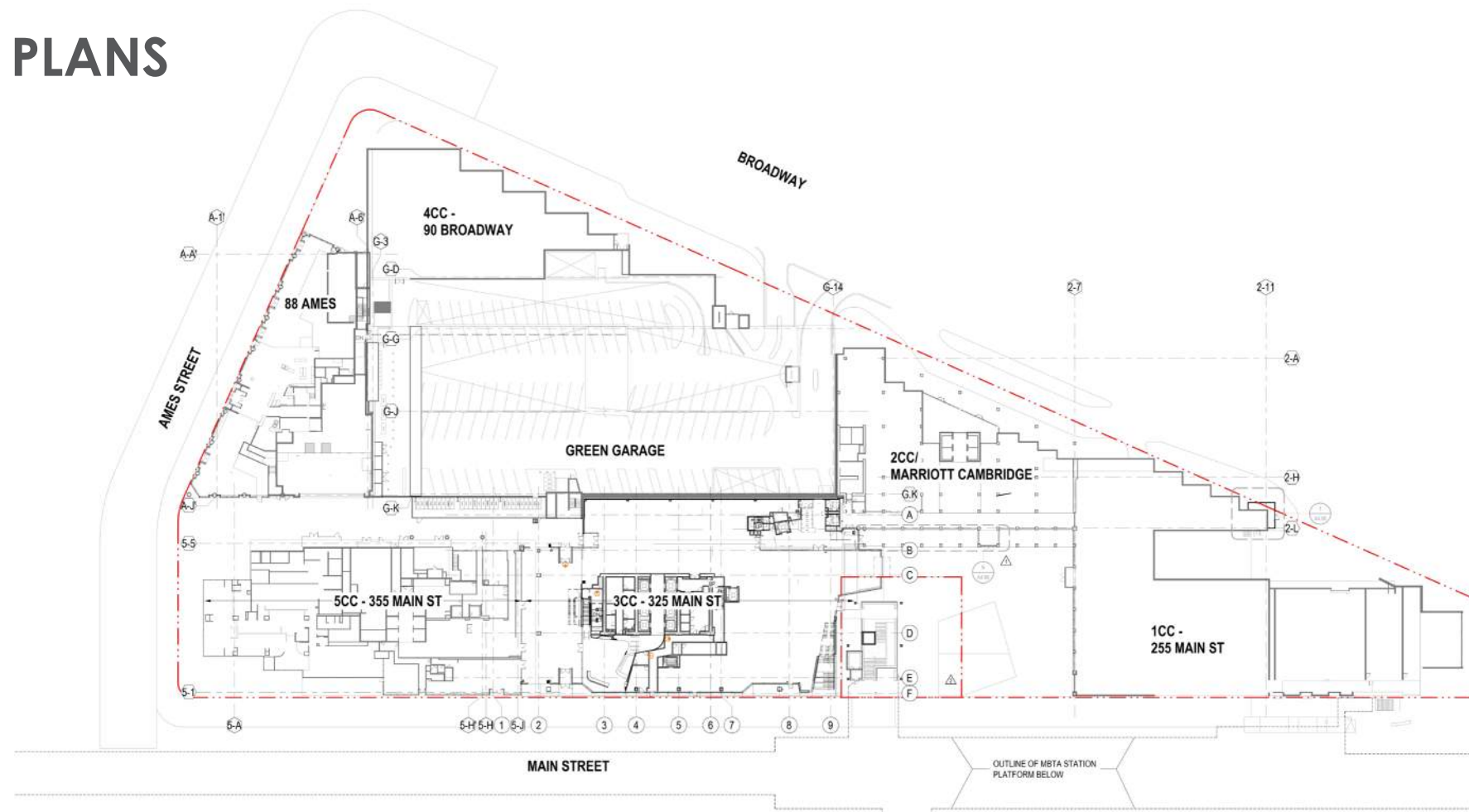
DESIGN RENDERING



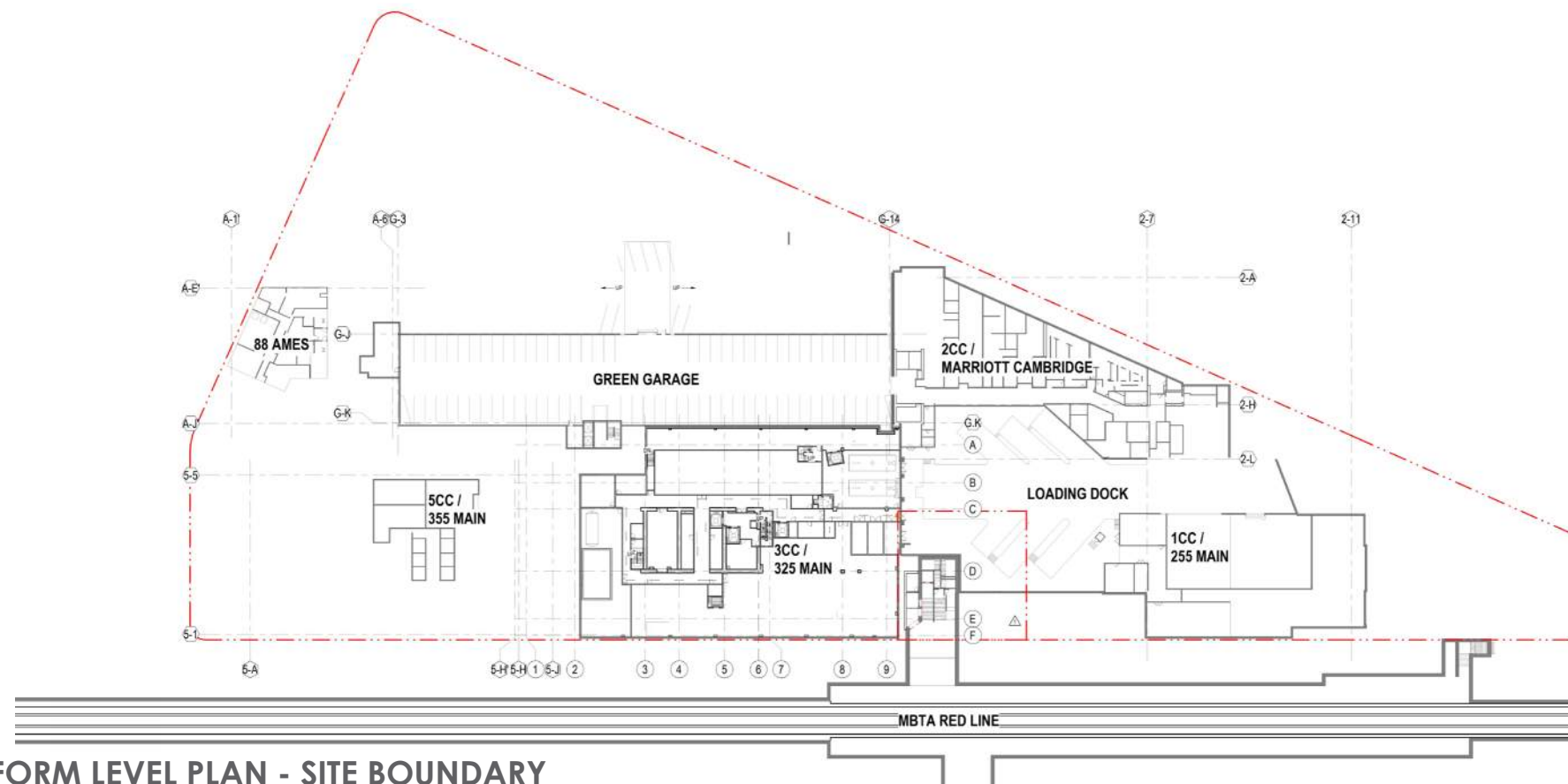
ARCHITECTURAL SITE PLAN



ARCHITECTURAL SITE PLANS

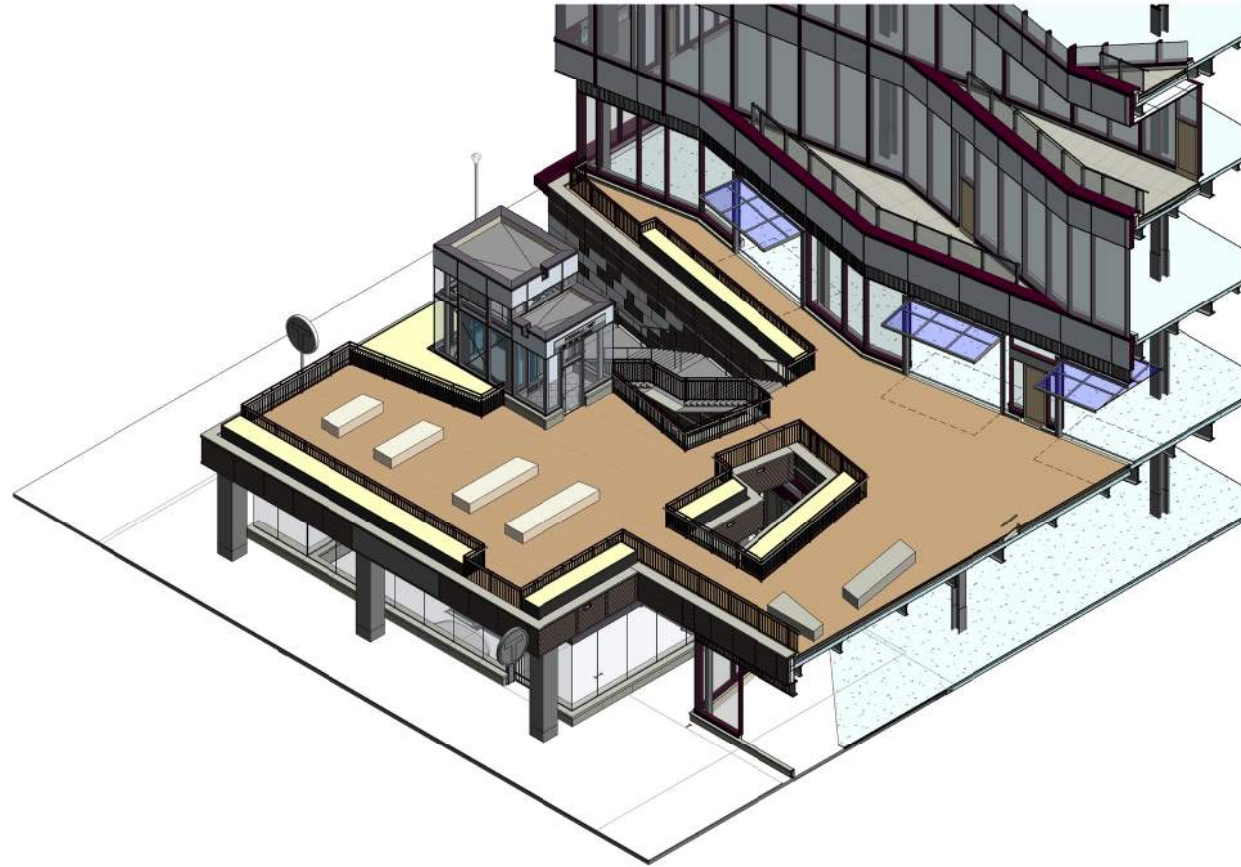


PROPOSED GROUND LEVEL PLAN - SITE BOUNDARY

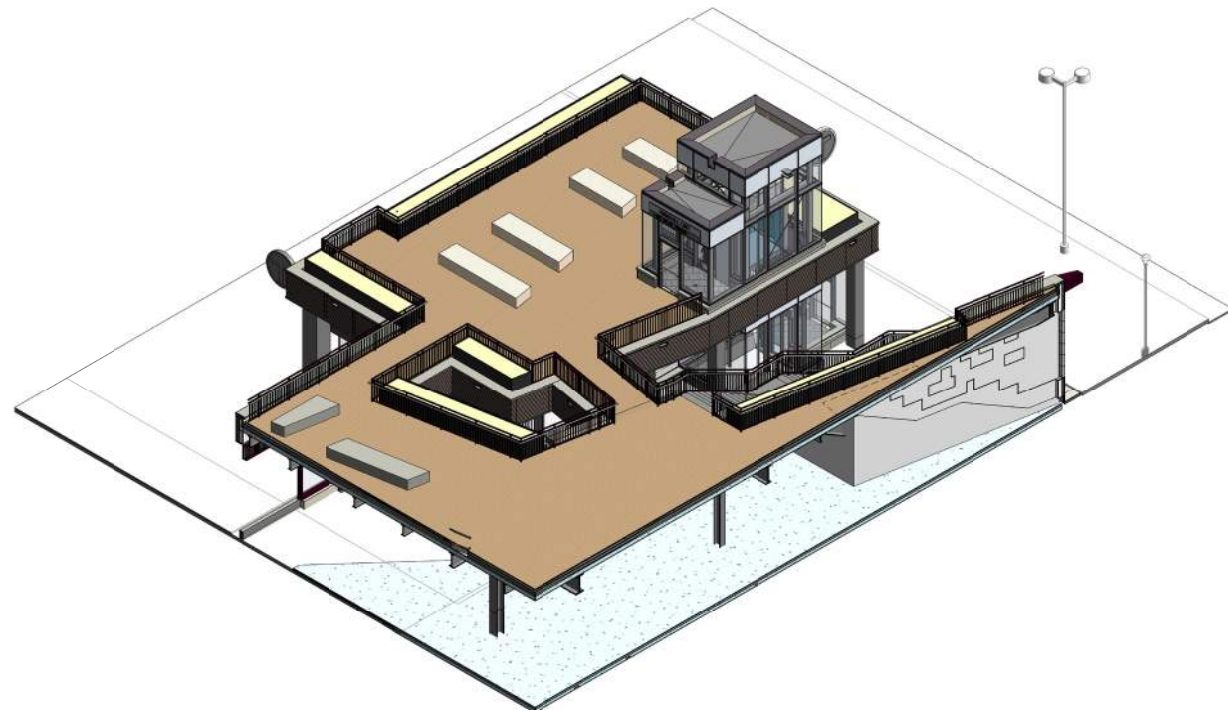


PROPOSED PLATFORM LEVEL PLAN - SITE BOUNDARY

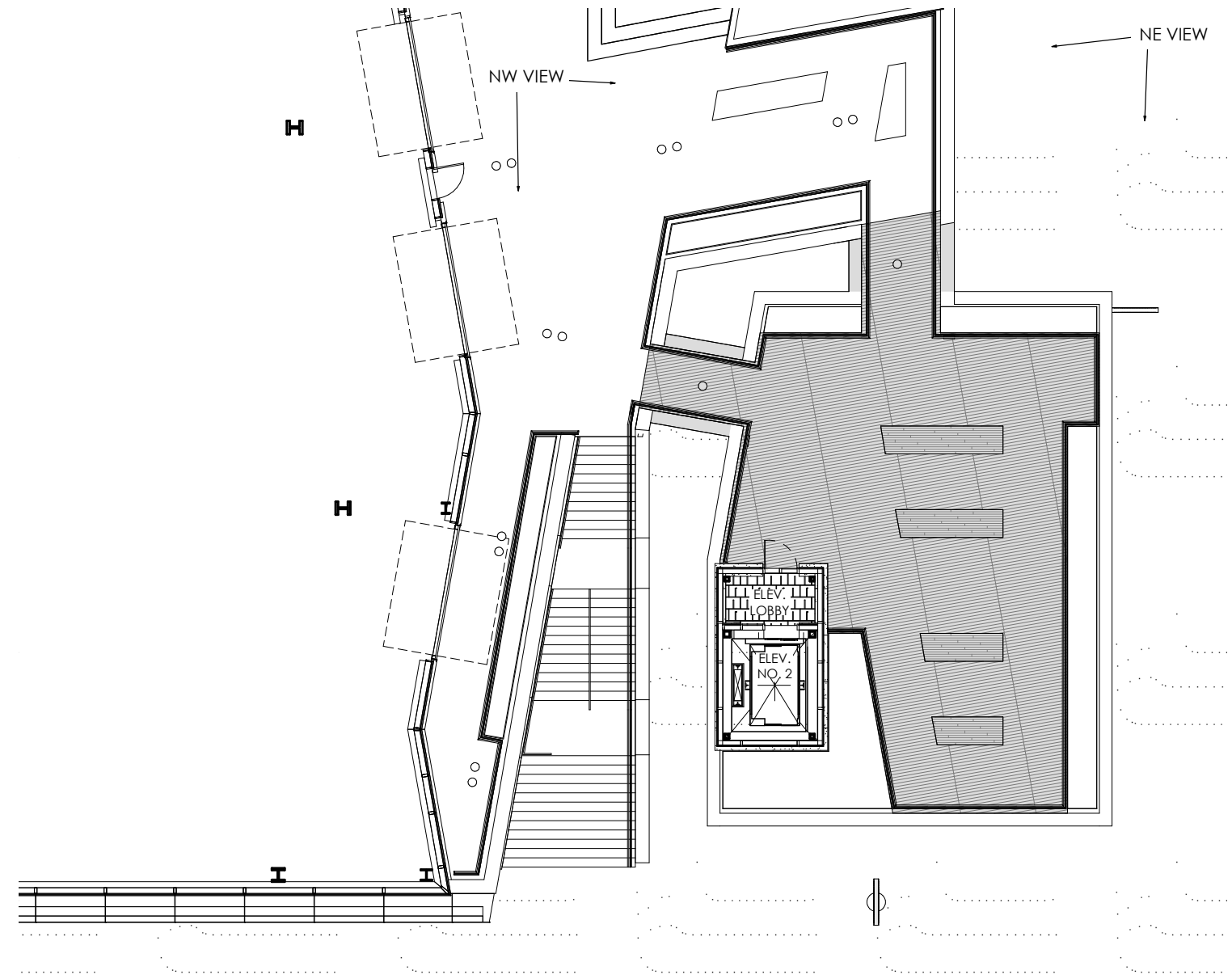
TERRACE BRIDGES



NORTHEAST VIEW OF TERRACE BRIDGES



NORTHWEST VIEW OF TERRACE BRIDGES



LEVEL 2 FLOOR PLAN

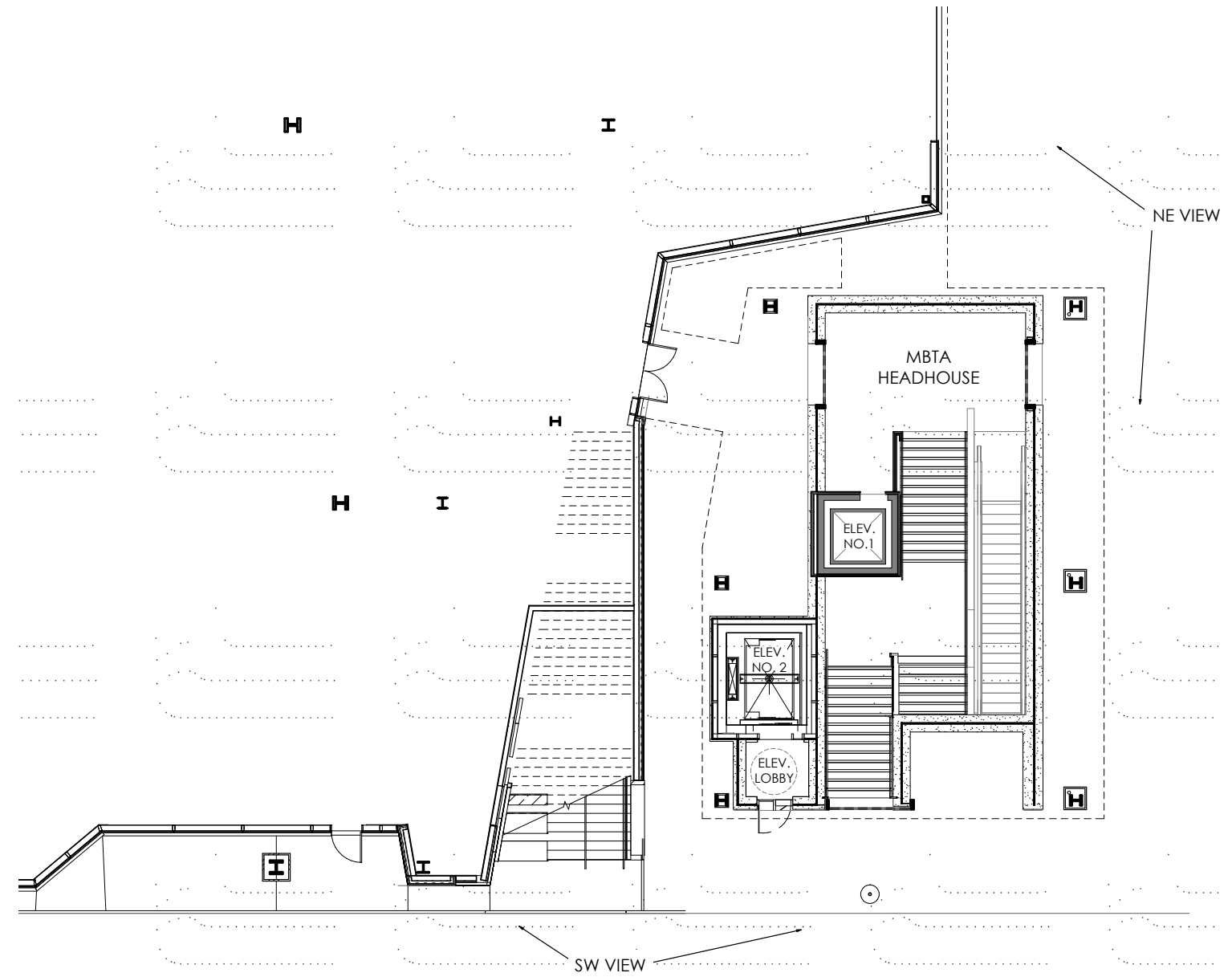
TERRACE BRIDGES



SOUTHWEST VIEW OF WEST TERRACE BRIDGE

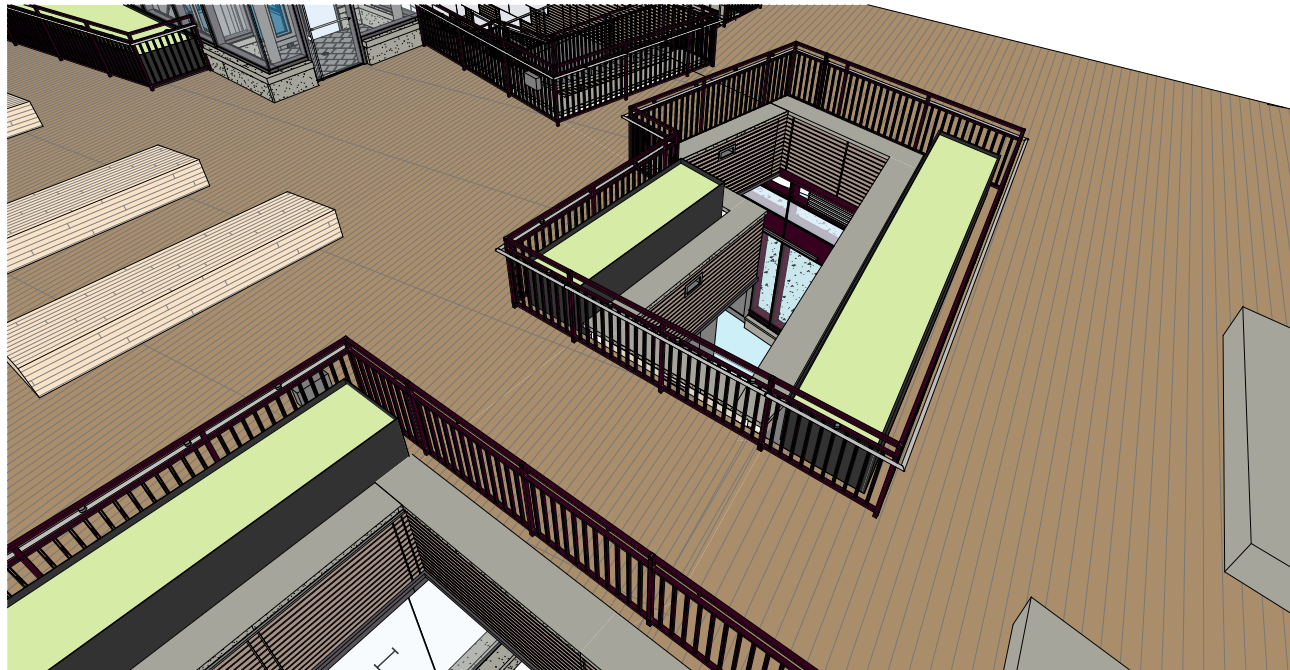


NORTHEAST VIEW OF NORTH TERRACE BRIDGE

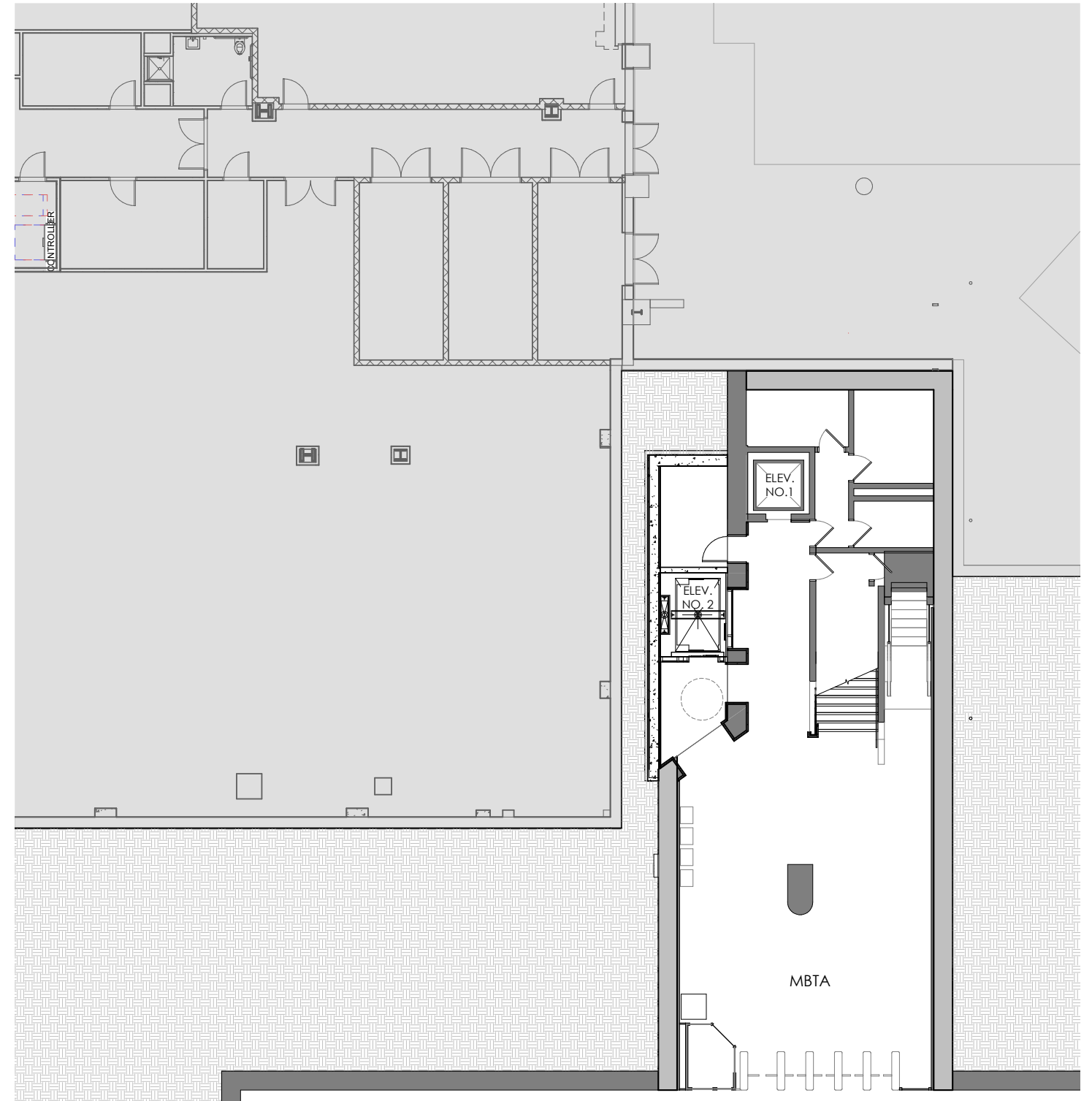


GROUND LEVEL FLOOR PLAN

TERRACE BRIDGES



3D VIEW OF TERRACE BRIDGES



PLATFORM LEVEL FLOOR PLAN