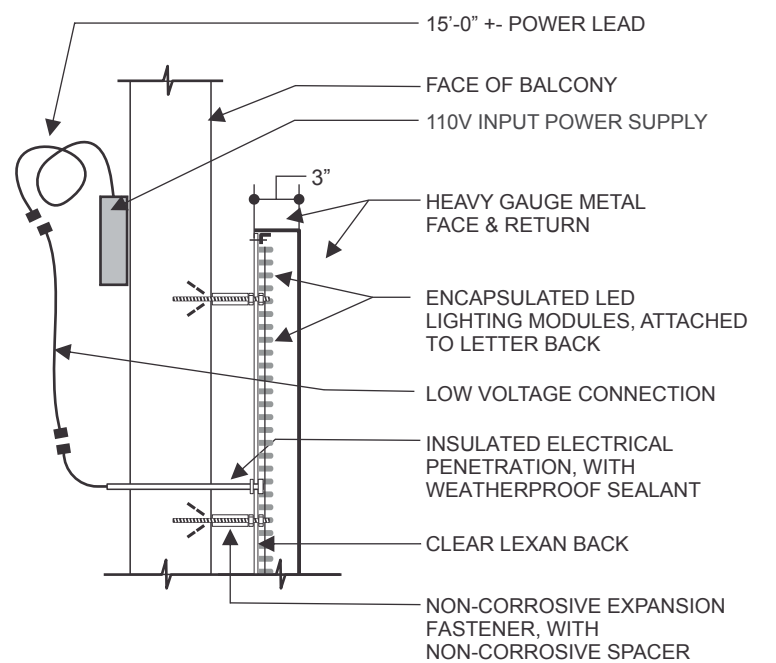


1 ELEVATION DETAIL AT SIGN LOCATION
3/4" = 1'-0"



2 NIGHT TIME PHOTO COMP
NTS



3 SCHEMATIC SECTION
NTS



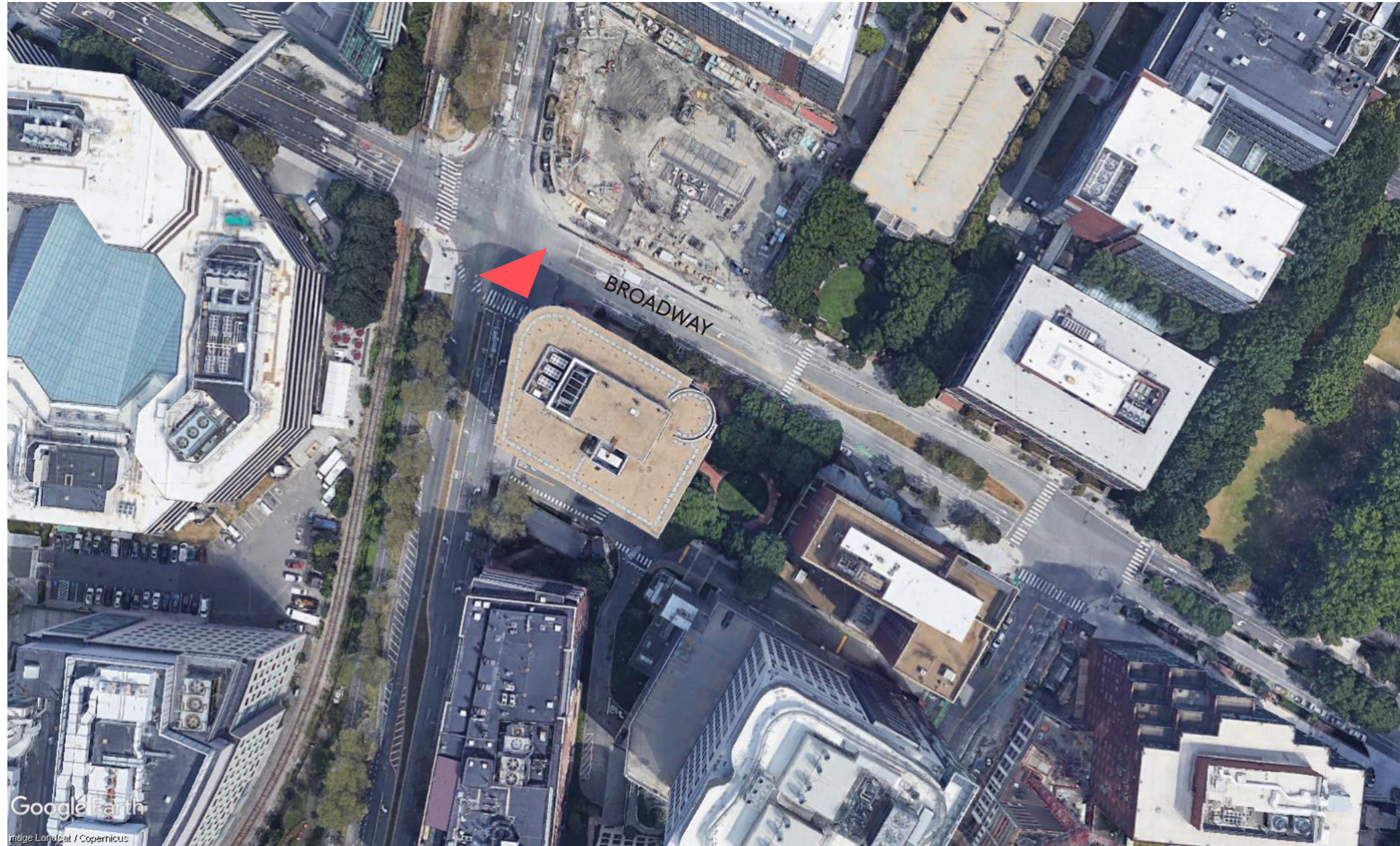
4 CONTEXT PHOTO COMP
NTS

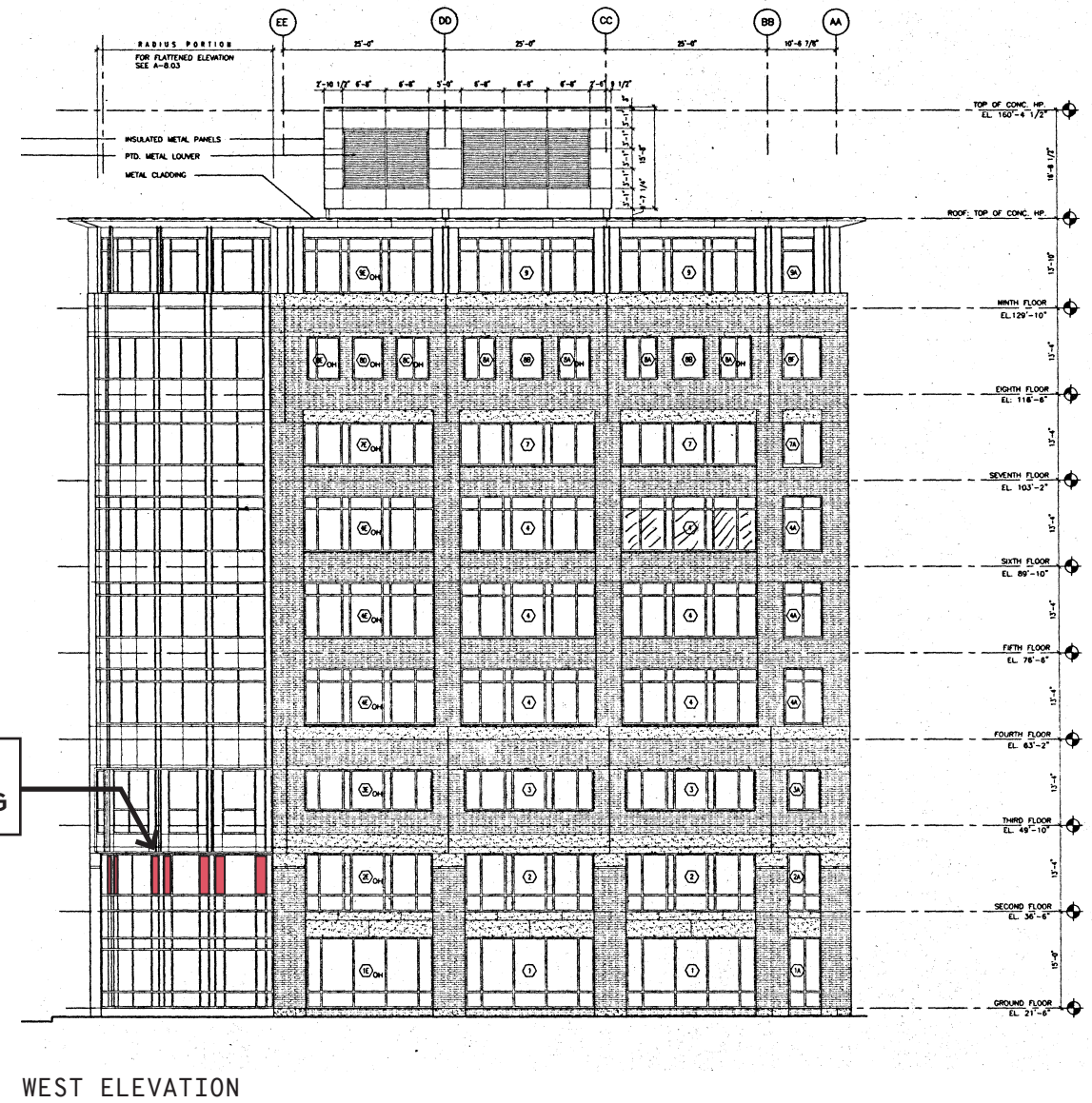
HALO-LIT BUILDING SIGNAGE

REVERSE CHANNEL FABRICATED LETTERS WITH HEAVY GAUGE METAL FACES AND RETURNS, 3" DEEP, PAINTED SATIN FINISH PMS COLORS AS NOTED. CHANNELS TO BE HALO-LIT IN WHITE WITH LED LIGHTING COMPONENTS ATTACHED TO CLEAR LEXAN BACKS AND POWERED BY REMOTE LOW VOLTAGE POWER SUPPLIES.

SIGNAGE TO BE ON EXISTING FACE OF BUILDING WITH NON-CORROSIVE FASTENERS AND SPACERS.

- PMS 660 C
- PMS 7619 C
- PMS 123 C
- PMS 7724 C







EXISTING



PROPOSED