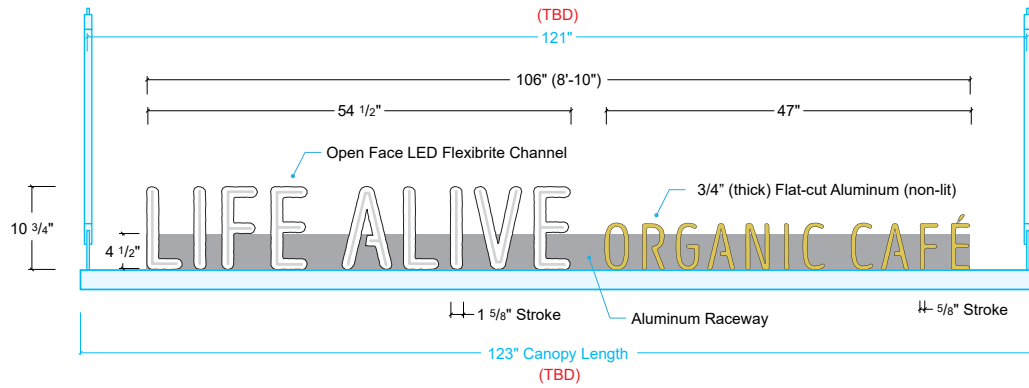
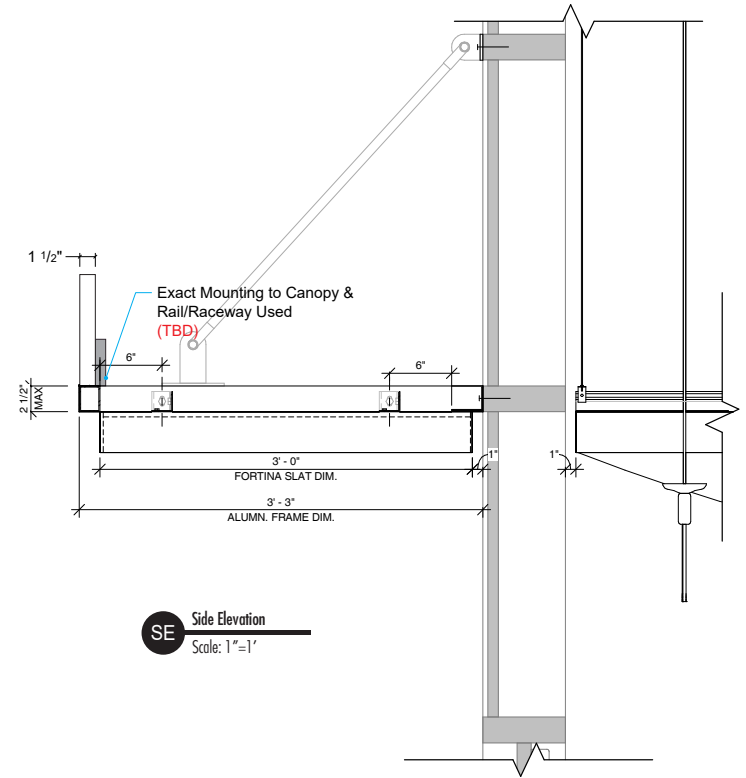


Custom LED Channel Letters Mounted to Top of Canopy

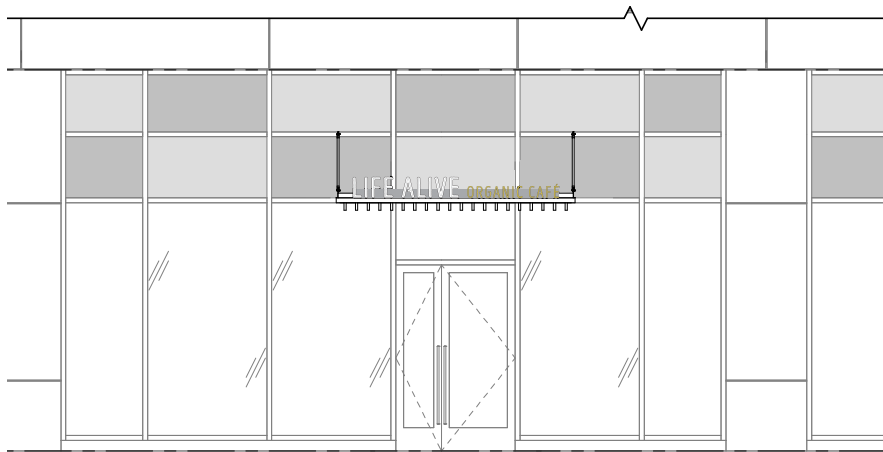


E1 Elevation: (Qty-1) #12467.1 Custom Channel Letters
 Scale: 3/4"=1' Square Footage: 10.6875' x 106" = 7.91 sf.

- Painted to match PMS 458C
- Canopy Color (TBD)



SE Side Elevation
 Scale: 1"=1'



L1 Location View
 Scale: 3/16"=1'



Job: Life Alive
 Location: 415 Main St. Cambridge, MA
 Account Manager: Jeff Kwass
 File: LifeAlive_415MainSt-Cambridge_CanopySign_1.a.i
 Date: 11.18.21 1.5
 Designer: Steven Monnetta

Revisions: Revisions:

THIS PROPOSAL DRAWING CONTAINS ORIGINAL ELEMENTS
 CREATED BY VIEWPOINT SIGN AND AWNING. ALL RIGHTS RESERVED.
 UNAUTHORIZED DUPLICATION OR REPRODUCTION IS PROHIBITED.

ViewPoint SIGN AND AWNING
 1.508.393.8200
 FAX 1.508.393.4244

Customer Approval

Acct. Manager Approval

Production Approval

Concept

Copyright © 2017 by BKA Architects, Inc. The architectural plans, drawings, designs, specifications and other arrangements on this sheet are and shall remain the property of BKA Architects, Inc. No part thereof shall be copied, disseminated to others, or used in connection with any work or project, other than the specified project for which they have been prepared and developed, without the express knowledge and written consent of BKA Architects, Inc.

CODED NOTES

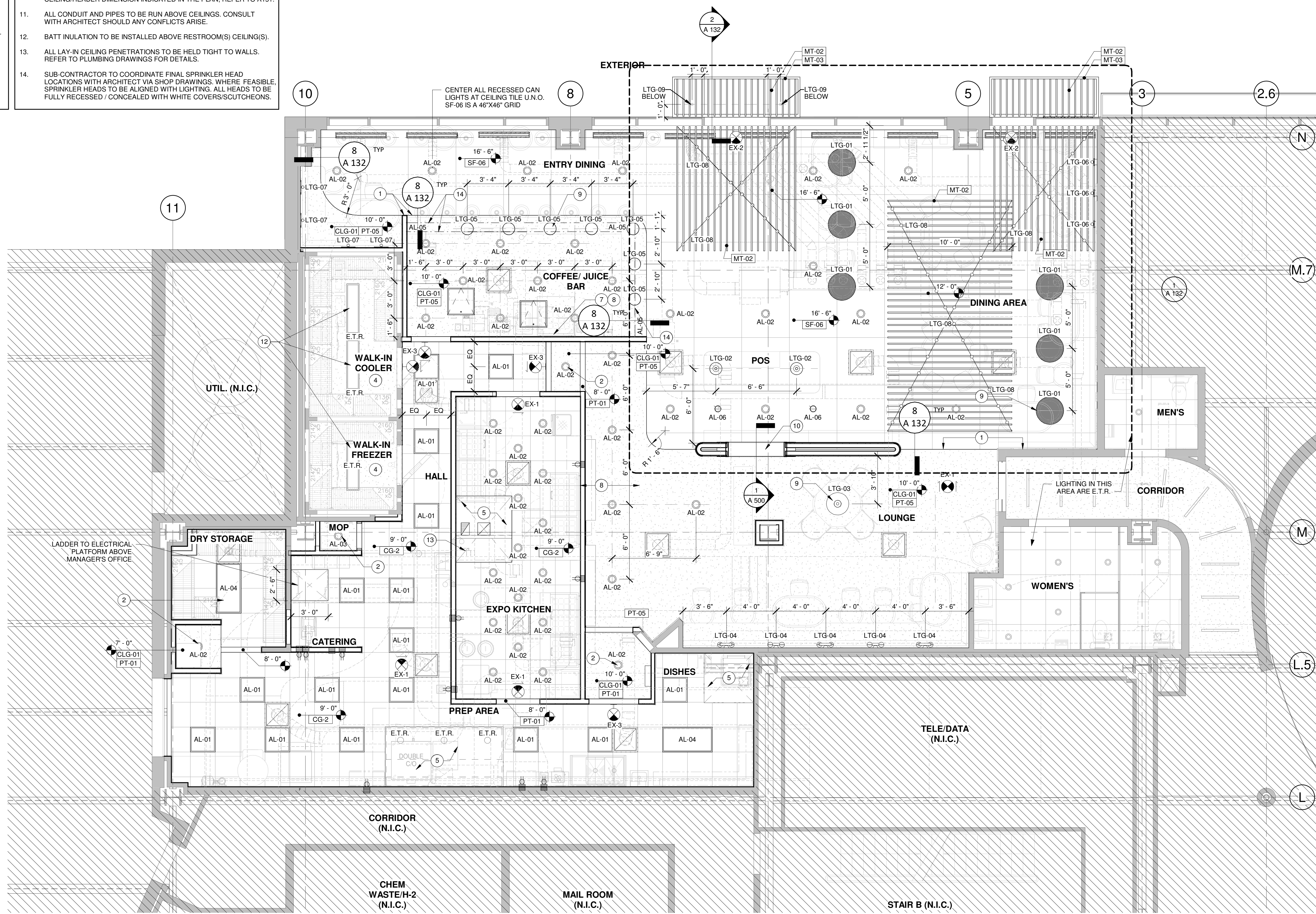
1. ALIGN FINISH FACE OF WALL WITH FINISH FACE OF SOFFIT.
2. CENTER LIGHTING FIXTURE AT CEILING OR ABOVE FIXTURE.
3. ALIGN FINISH FACE OF SOFFITS
4. EXISTING WALK-IN COOLER AND FREEZER.
5. EXHAUST HOOD
6. APPROX LOCATION OF 24"x24" ACCESS PANEL - INTEXFORMS AP24X24. FINAL LOCATIONS TO BE DETERMINED IN FIELD, TO COORDINATE WITH REQUIRED MECHANICAL ACCESS LOCATIONS. ALL MEASURES TO BE TAKEN TO REDUCE VISIBILITY OF PANELS. TO BE PAINTED TO MATCH CEILING.
7. PROVIDE BLOCKING IN CEILING FOR SUSPENDED MENU BOARDS. REFER TO MILLWORK PACKAGE.
8. PROVIDE BLOCKING IN CEILING FOR SUSPENDED LAX SHELVING. REFER TO MILLWORK PACKAGE.
9. PROVIDE BLOCKING IN CEILING FOR DECORATIVE/PENDANT LIGHT FIXTURE. REFER TO LIGHTING/ARTWORK PACKAGE.
10. LED STRIP LIGHT IN OCULUS PERIMETER. SEE A300 FOR DETAILS.
11. DECORATIVE MILLWORK VESTIBULE PANELS. REFER TO MILLWORK PACKAGE.
12. EXISTING OVERHEAD LIGHTS IN WALK-IN COOLER/FREEZER. G.C. TO RELAMP IF REQUIRED.
13. REFER TO STRUCTURAL FOR EXHAUST HOOD UNISTRUT SUPPORT.
14. AL-05 STRIP LIGHT BEHIND COFFEE/JUICE BAR TO BE INTEGRATED INTO MILLWORK SHELVING. COORDINATE PLACEMENT WITH MILLWORK VENDOR/PACKAGE.

GENERAL NOTES

1. ALL INTERIOR FIXTURES AND LAMPS FURNISHED & INSTALLED BY G.C.
2. KITCHEN EXHAUST HOODS PROVIDED BY KITCHEN VENDOR AND INSTALLED BY GC.
3. ANSUL BOX & FIRE SUPPRESSION SYSTEM PROVIDED BY AND INSTALLED BY HS. HOOD INTERLOCK BY GC. ELECTRICAL CONNECTION BY GC. RE.ELEC.
4. MENU BOARD ASSEMBLY PROVIDED BY OTHERS, INSTALLED BY GC.
5. PROVIDE BLOCKING ABOVE MENU BOARD ASSEMBLY FOR INSTALLATION.
6. ALL HEIGHTS ARE TO BOTTOM OF FIXTURE U.N.O.
7. ALL DIMENSION ARE TO THE FACE OF FRAMING, OR CENTERLINE OF FIXTURE U.N.O.
8. SEE ELECTRICAL DRAWINGS FOR SHATTER RESISTANT LAMP LOCATIONS.
9. ALL EMERGENCY FIXTURES, LIGHTS, AND STROBES SHALL BE ALIGNED OR CENTERED ON WALLS.
10. FULL CERAMIC TILE COURSING SHALL TAKE PRECEDENT OVER ANY CEILING/HEADER DIMENSION INDICATED IN THE PLAN, REFER TO A151.
11. ALL CONDUIT AND PIPES TO BE RUN ABOVE CEILINGS. CONSULT WITH ARCHITECT SHOULD ANY CONFLICTS ARISE.
12. BATT INSULATION TO BE INSTALLED ABOVE RESTROOM(S) CEILING(S).
13. ALL LAY-IN CEILING PENETRATIONS TO BE HELD TIGHT TO WALLS. REFER TO PLUMBING DRAWINGS FOR DETAILS.
14. SUB-CONTRACTOR TO COORDINATE FINAL SPRINKLER HEAD LOCATIONS WITH ARCHITECT VIA SHOP DRAWINGS. WHERE FEASIBLE SPRINKLER HEADS TO BE ALIGNED WITH LIGHTING. ALL HEADS TO BE FULLY RECESSED / CONCEALED WITH WHITE COVERS/SCUTCHEONS.

LIGHTING FIXTURE SCHEDULE

TYPE	QTY	MODEL	MANUFACTURER	DESCRIPTION	INSTALL COMMENTS
AL-01	16	WRTL-G-24"-5000LM-AFL-30K	LITHONIA	2x2 LED TROFFER	RECESSED
AL-02	47	RL4069S1EWH-H245ICAT-27K	HALO	RECESSED FIXED DOWNLIGHT	RECESSED
AL-03	2	VF100 SERIES - 8411-16L-8027 (2700K)-WIDE-MW (WHITE)-CL	LF ILLUMINATION LLC	RECESSED FIXED DOWNLIGHT - KITCHEN	RECESSED
AL-04	2	WRTL-G-48"-5000LM-AFL-30K	LITHONIA	2x4 LED TROFFER	RECESSED
AL-05	3	DI-24V-TE-NBLX-27- (VARIABLE LENGTH)	DIODE LED	BLAZE NEON 24V LED STRIP LIGHT	SURFACE MOUNTED
AL-06	2	8121B-15V-9220-M-MW	LF ILLUMINATION LLC	BULLSEYE 4" ROUND GIMBAL, ADJUSTABLE DOWNLIGHT	RECESSED
EX-1	4	RELXTE-1-R-C-W-EM W/BATTERY BACK-UP	BEST	EXIT SIGN - EDGE LIT	RECESSED
EX-2	2	ELXTEU-1-R-C-B-EM W/BATTERY BACK-UP	BEST	EXIT SIGN - EDGE LIT	SUSPENDED
EX-3	4	EXZTEU-1-R-W-EM W/BATTERY BACK-UP	BEST	EXIT SIGN	WALL-MOUNTED
LTG-01	6	Z2 BLONDE SISAL NET PENDANT	GLOBAL LIGHTING	SISAL NET, TEA DYED INFINITE	SUSPENDED
LTG-02	2	AMBER PENDANT	ANTHROPOLOGIE	COLOR: 025	SUSPENDED
LTG-03	1	BAMBOO WEAVING CEILING LAMP SHADES	ARTUREST	WOOD, ALUMINUM, NATURAL, BLACK	SUSPENDED
LTG-04	5	HAPPO SCONCE - 15-1144NB	BURKE DECOR	BRASS	WALL-MOUNTED
LTG-05	7	CHROMA BUBBLE PENDANT	ANTHROPOLOGIE	COLOR: 095; GLASS; BRASS	SUSPENDED
LTG-06	3	GROVE FLUSH LIGHT	WORLEYS LIGHTING	WALNUT/POLISHED NICKEL	WALL-MOUNTED
LTG-07	4	CASSEY SCONCE	LULU AND GEORGIA	CANE RATTAN, GLASS, NATURAL	WALL-MOUNTED
LTG-08	75	EXHIBITOR SERIES EXWH-24-WW-G19-C	TOKISTAR LIGHTING	EXTERIOR STRING LIGHTING	SUSPENDED
LTG-09	2	SL37PL4BRS	FOCUS INDUSTRIES	OUTDOOR LED PAVER INSERT LIGHT	RECESSED IN BRICK PAVERS



1 REFLECTED CEILING PLAN
SCALE: 1/4" = 1'-0"

ARCHITECT
BKA ARCHITECTS
Boston + Brockton
142 Crescent Street
Brockton, MA 02302
508.583.5703
bkaarchitects.com

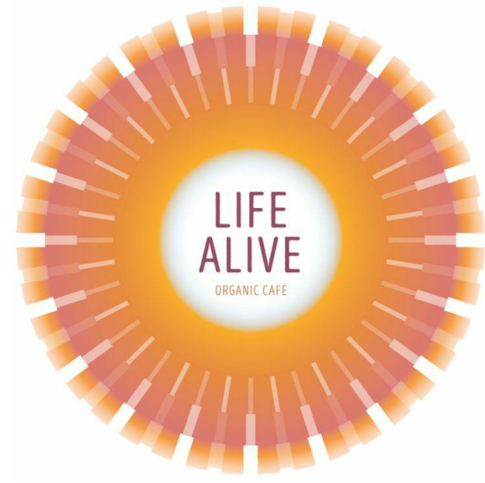
CONSULTANT

SEAL

ISSUES & REVISIONS

10/01/2021 - CD SET	
10/20/2021 - DEMOLITION PERMIT	
10/25/2021 - PERMIT SET	
REV DATE	ISSUED
1	

OWNER/CLIENT
LIFE ALIVE



PROJECT
KENDALL SQUARE

415 MAIN STREET,
CAMBRIDGE, MA 02142

DRAWING TITLE
REFLECTED CEILING
PLAN

DRAWING INFORMATION
Job Number: 221078
Checked By: KTB
Drawn By: CMD
DRAWING NUMBER

PERMIT SET 10/25/2021

A
130

Copyright © 2017 by BKA Architects, Inc. The architectural plans, drawings, designs, specifications and other arrangements on this sheet are and shall remain the property of BKA Architects, Inc. No part thereof shall be copied, disseminated to others, or used in connection with any work or project, other than the specified project for which they have been prepared and developed, without the express knowledge and written consent of BKA Architects, Inc.

CONSULTANT

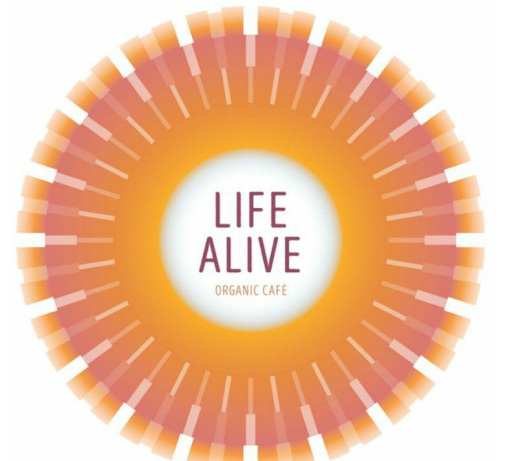
SEAL

ISSUES & REVISIONS

REV	DATE	ISSUED
1		

10/01/2021 - CD SET
 10/20/2021 - DEMOLITION PERMIT
 10/25/2021 - PERMIT SET

OWNER/CLIENT
LIFE ALIVE



PROJECT
KENDALL SQUARE

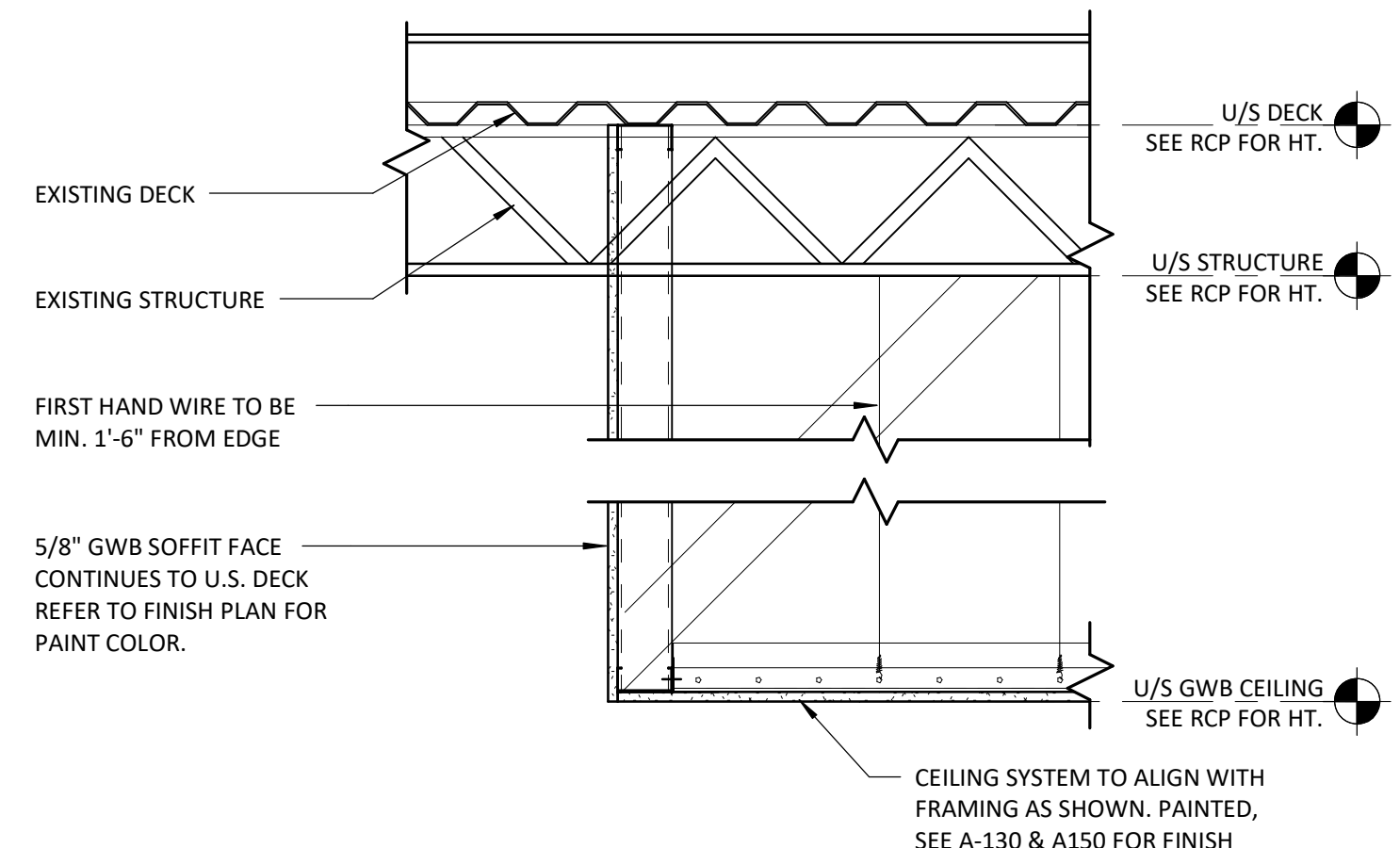
415 MAIN STREET,
 CAMBRIDGE, MA 02142

DRAWING TITLE
CEILING DETAILS

DRAWING INFORMATION
 Job Number: 221078
 Checked By: KTB
 Drawn By: CMD
 DRAWING NUMBER

PERMIT SET 10/25/2021

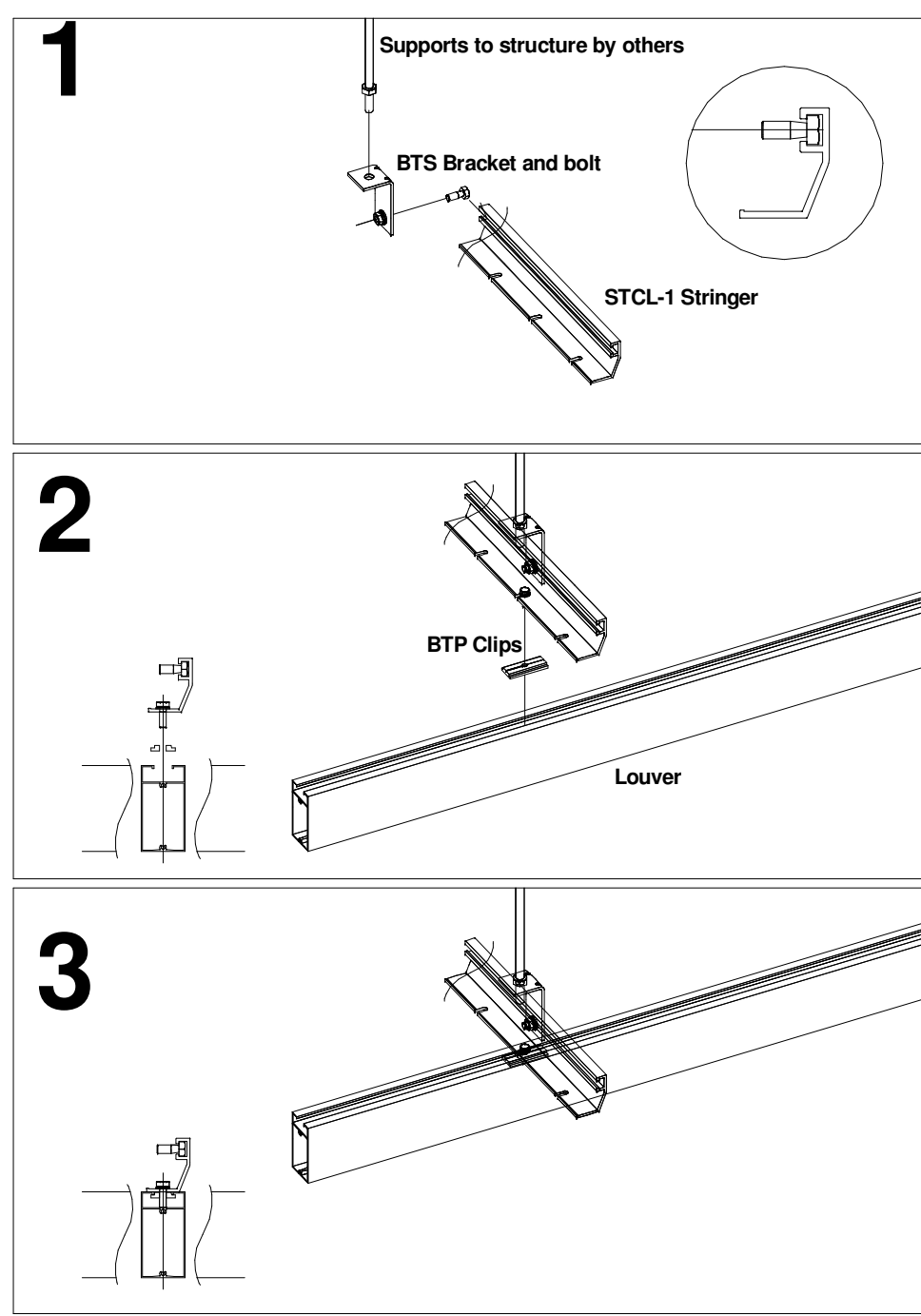
A
132



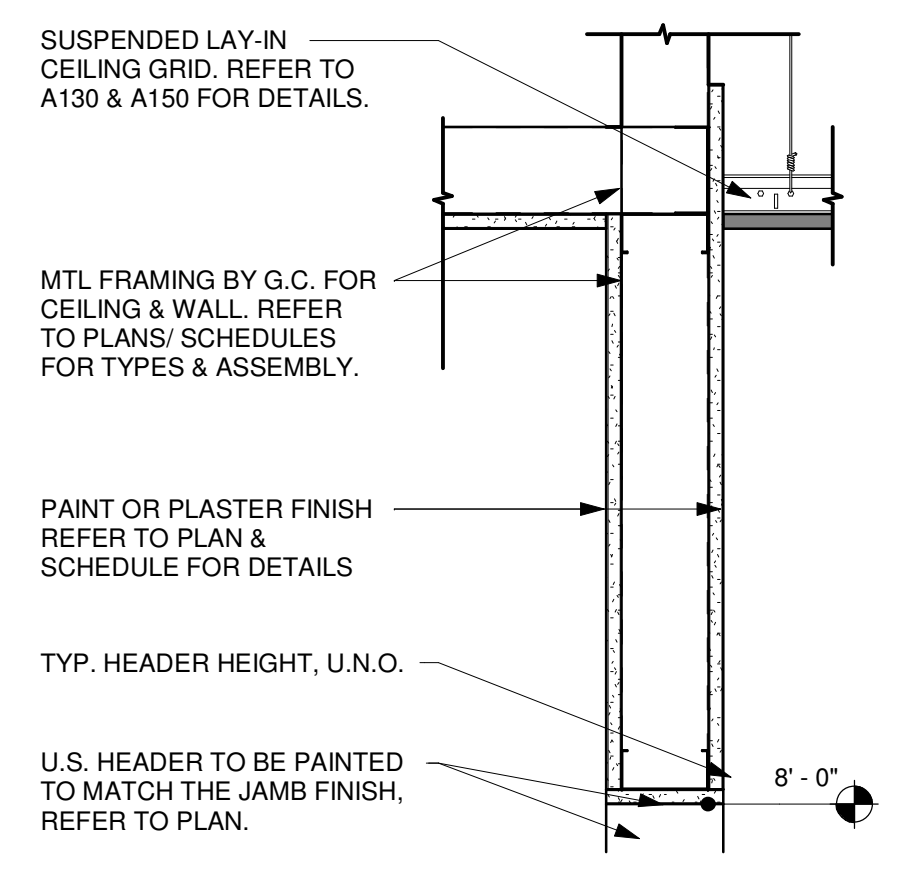
8 SOFFIT DETAIL UP TO DECK
 SCALE: 1" = 1'-0"

STCL-1 Stringers are pre-notched per spacing specified. Top channel allows for on-site adjustment of hanging point.

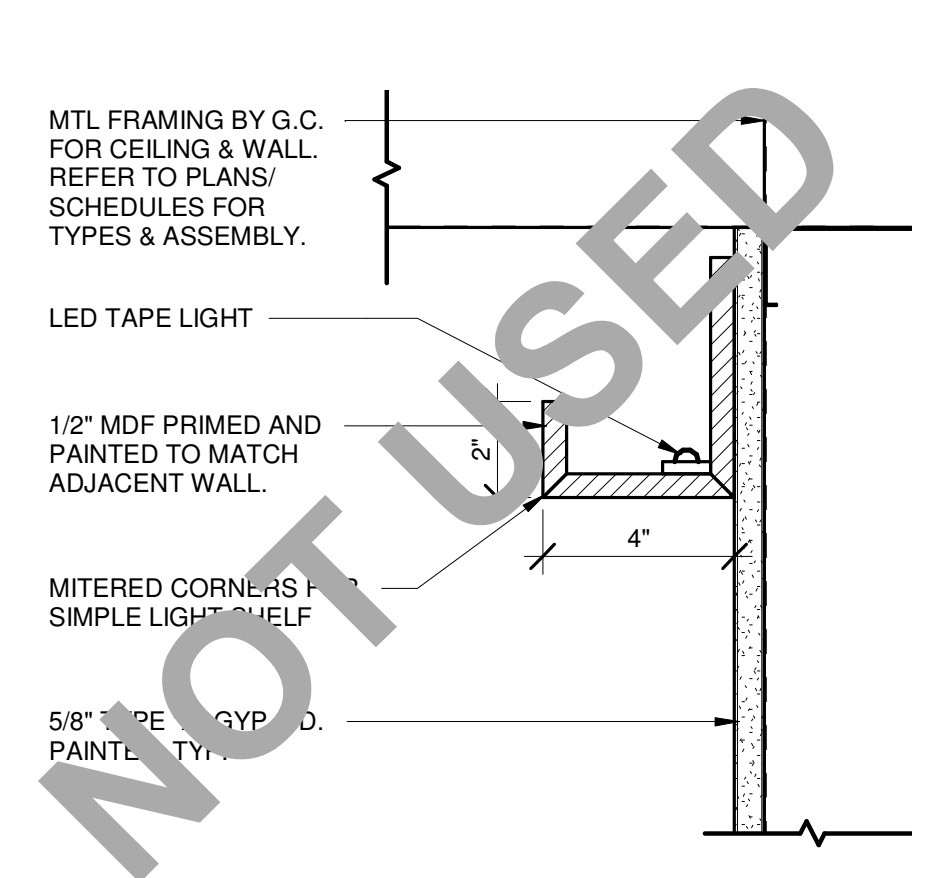
1. Attach the BTS Bracket to your supporting structure. Secure it to the Stringer with bolts provided. The ceiling attachment point can be adjusted by moving bolt along channel before tightening.
2. Attach Endcaps to Louvers. Assemble Louvers to Stringer with BTP Clips provided and tighten to fix.



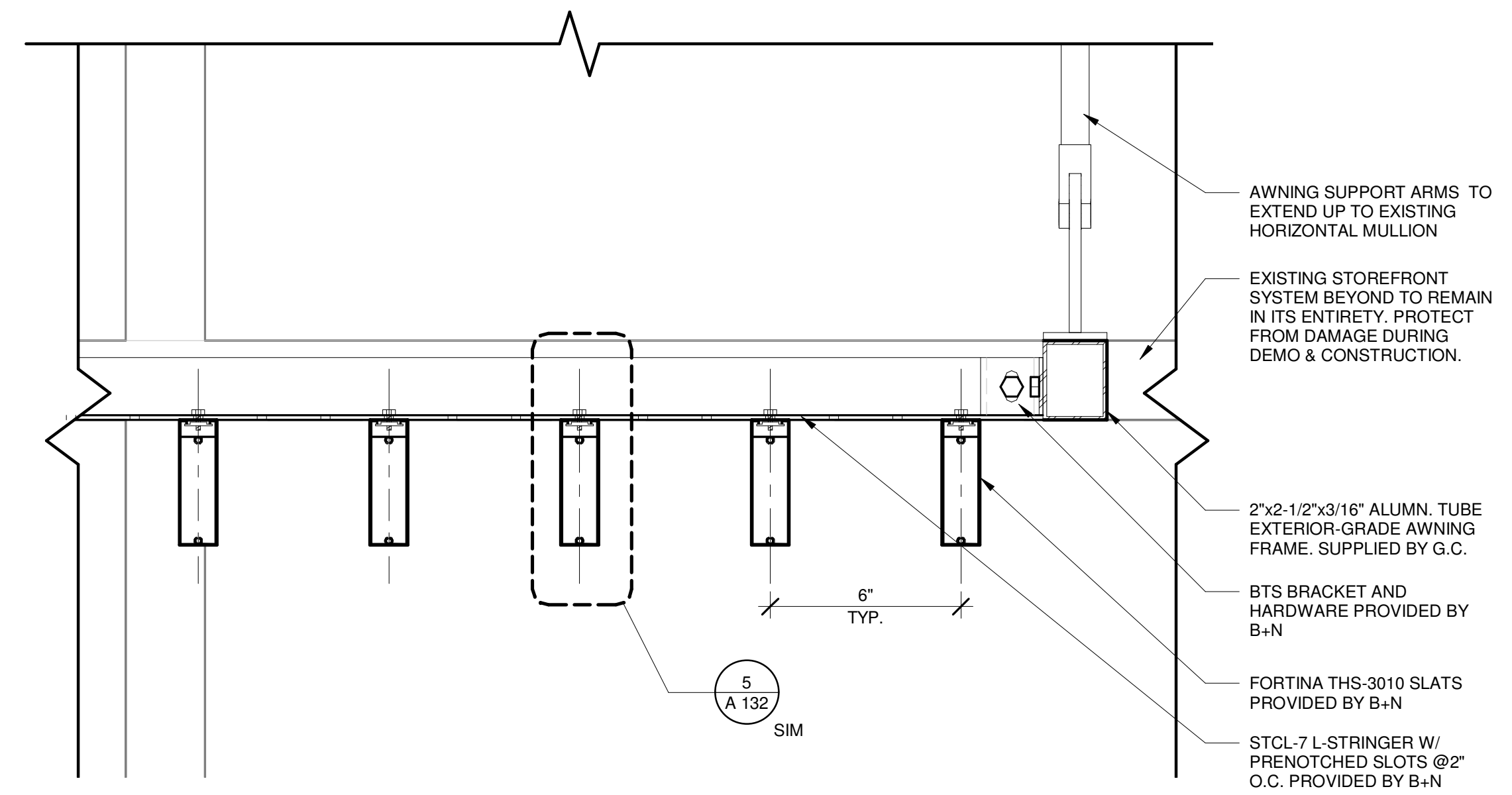
5 STRINGER MOUNTED FORTINA LOUVERS
 SCALE: 12" = 1'-0"



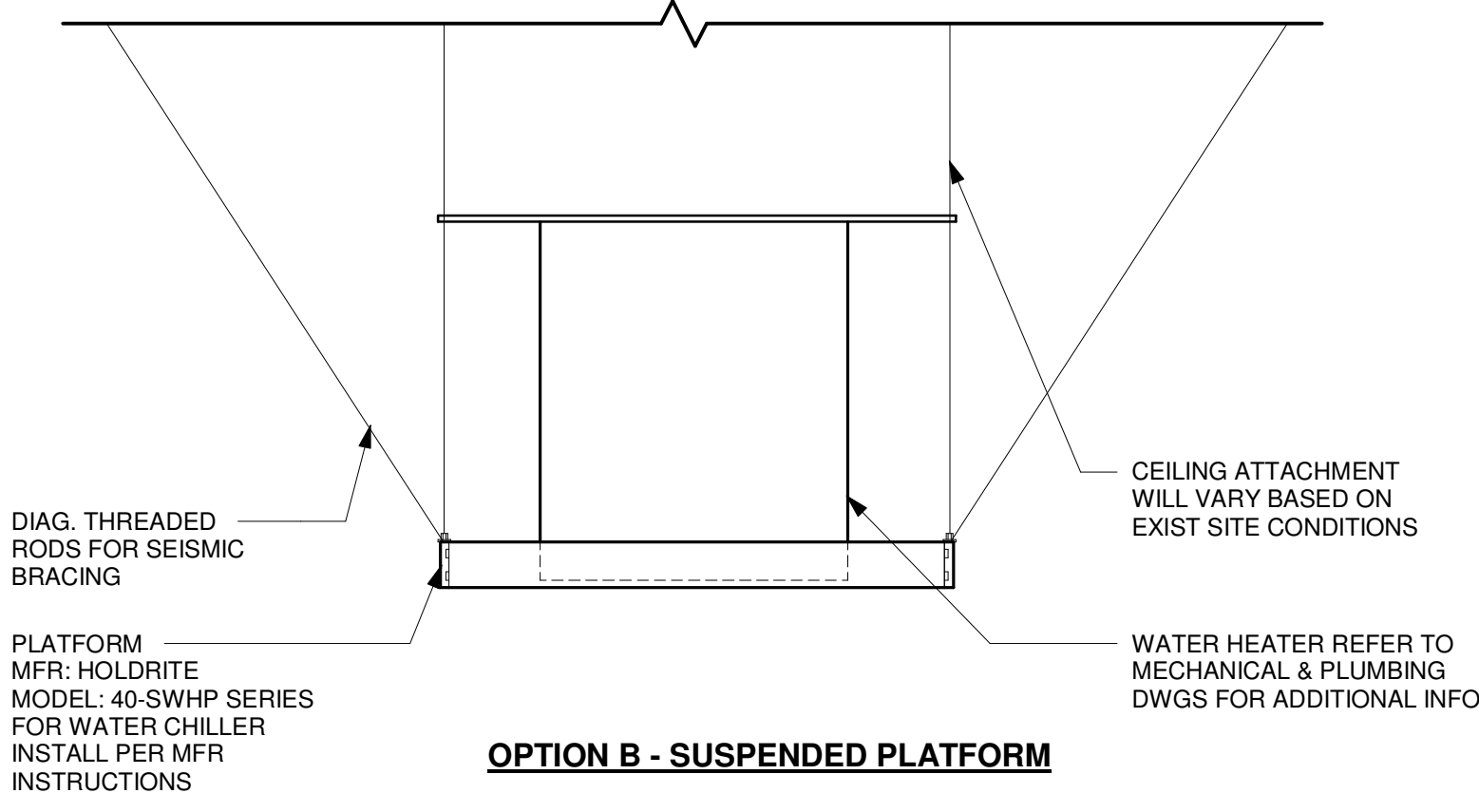
7 TYP. HALLWAY HEADER DETAIL
 SCALE: 1 1/2" = 1'-0"



6 TYP. LED COVE LIGHT DETAIL
 SCALE: 3" = 1'-0"



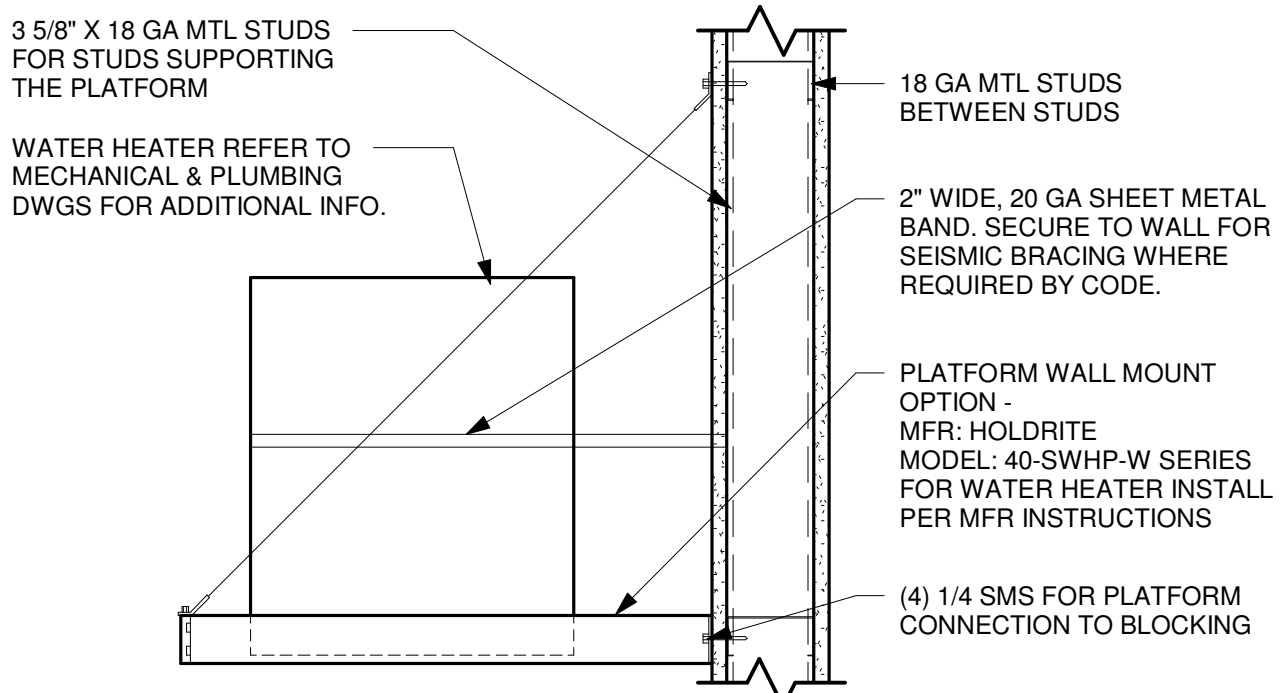
4 SECTION DETAIL - SLAT CEILING EXTERIOR
 SCALE: 3" = 1'-0"



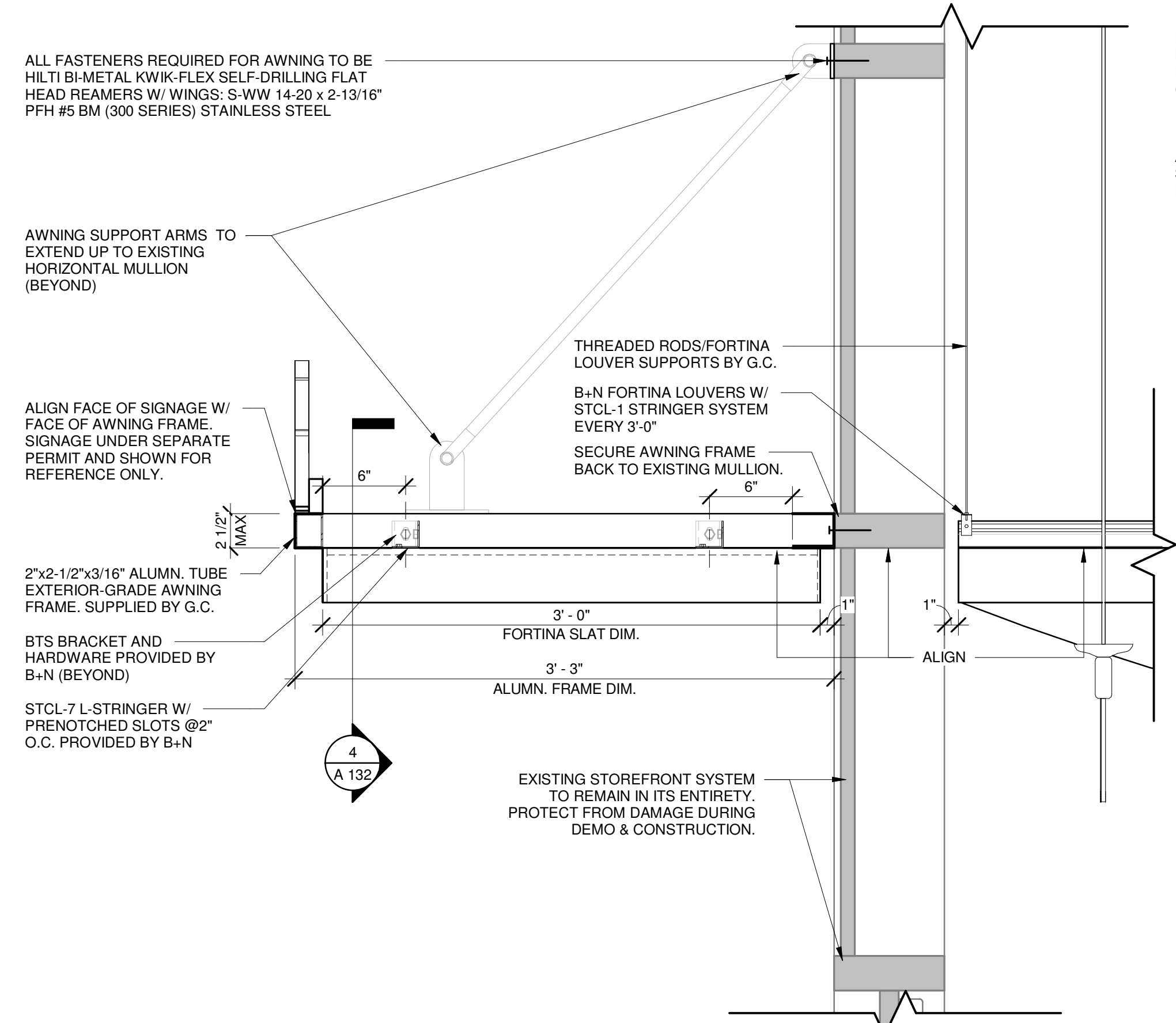
OPTION B - SUSPENDED PLATFORM

NOTES:

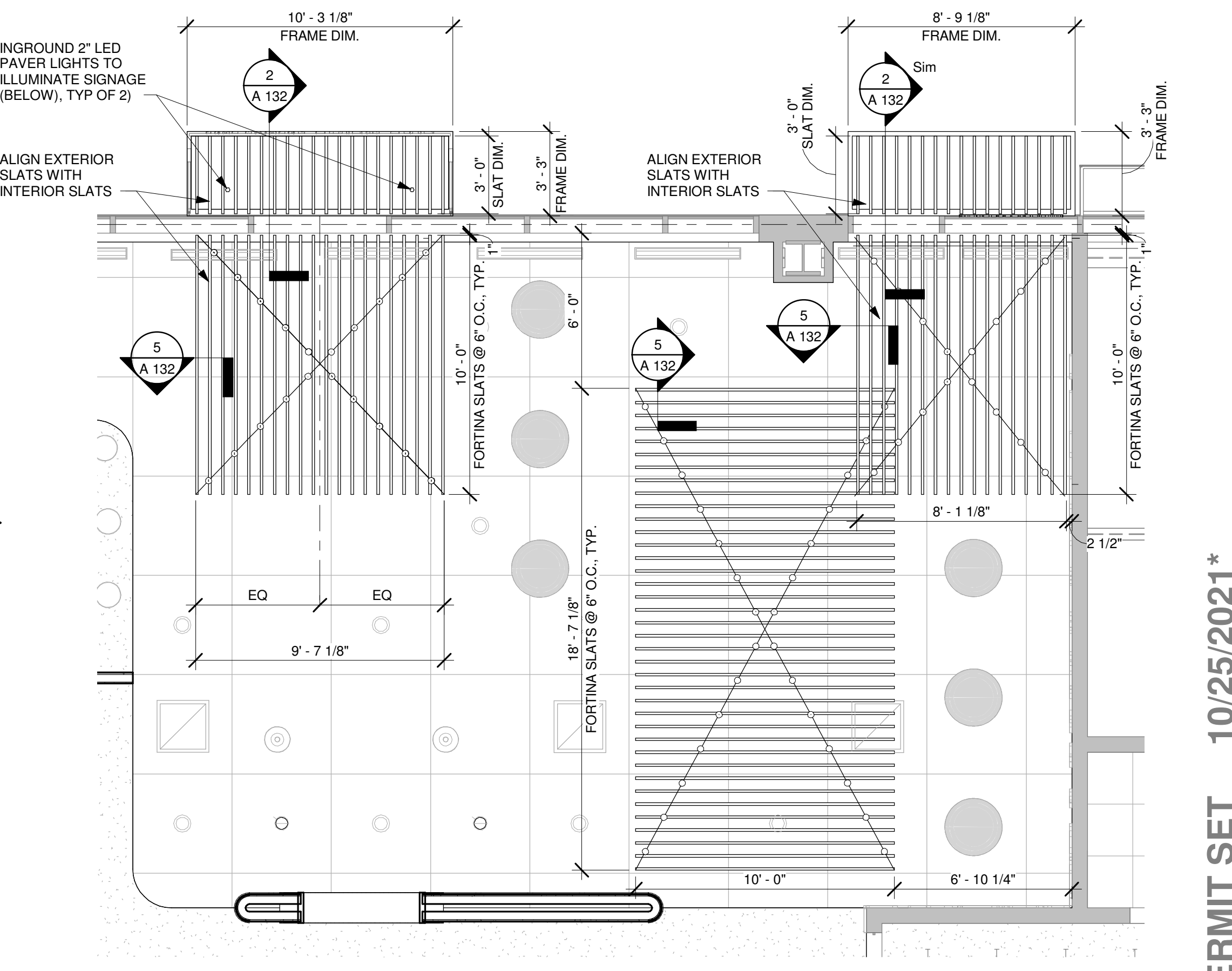
1. GC TO COORD LOCATION W/ MEP'S.
2. GC TO PROVIDE ACCESS PANEL WHENEVER HEATER IS ABOVE HARD LID CEILING OR IN WALL CAVEITY



OPTION A - WALL MOUNT PLATFORM



2 SECTION DETAIL - SLAT CEILING TO AWNING
 SCALE: 1 1/2" = 1'-0"



1 METAL SLAT CEILING PLAN
 SCALE: 1/4" = 1'-0"

3 WATER HEATER MOUNTING DETAIL
 SCALE: 1 1/2" = 1'-0"

Copyright © 2017 by BKA Architects, Inc. The architectural plans, drawings, designs, specifications and other arrangements on this sheet are and shall remain the property of BKA Architects, Inc. No part thereof shall be copied, disseminated to others, or used in connection with any work or project, other than the specified project for which they have been prepared and developed, without the express knowledge and written consent of BKA Architects, Inc.

CODED NOTES

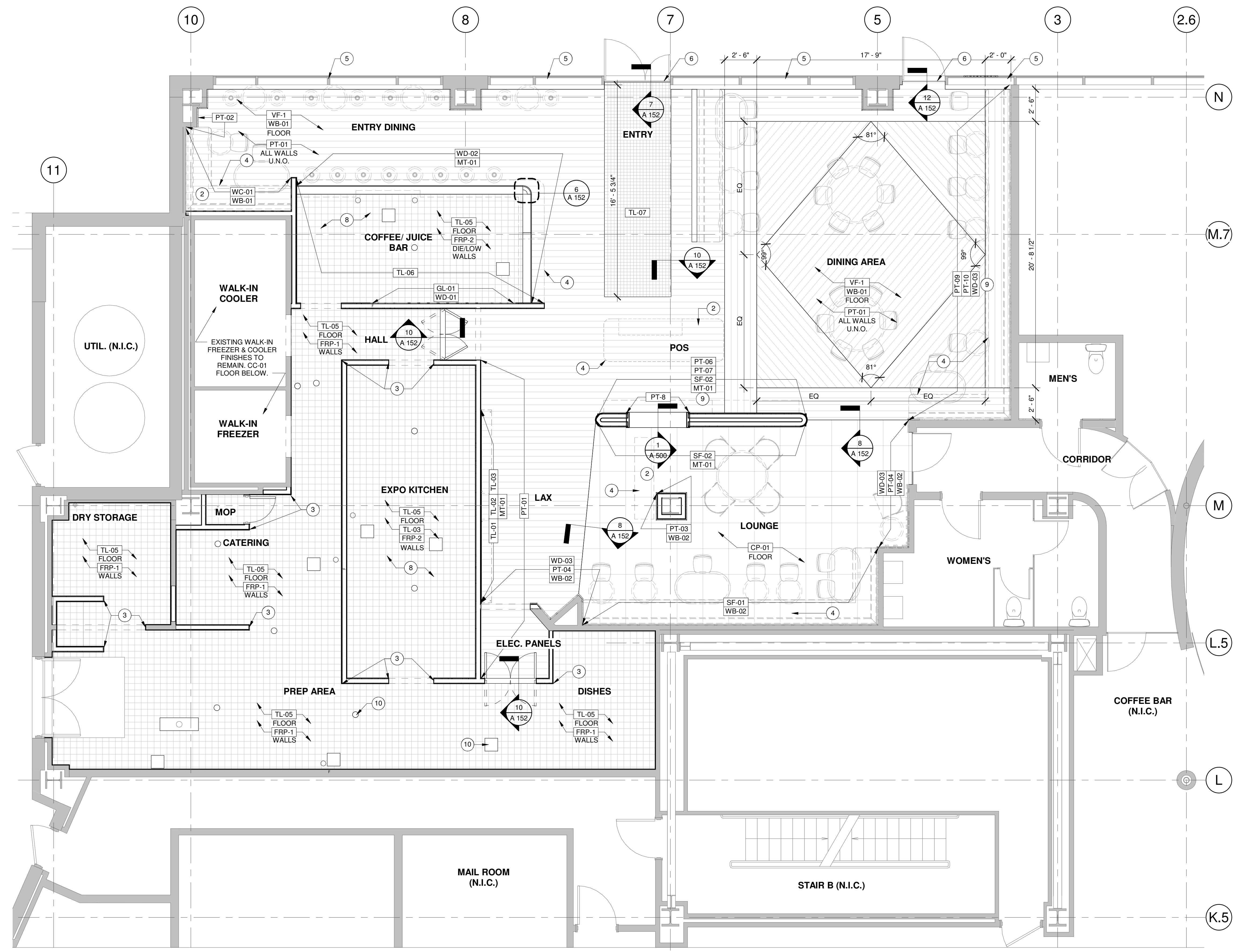
- 1 GLAZING TO RECEIVE WINDOW FILM TO OBSCURE BACK OF WALL FROM VIEW. REFER TO FINISH PACKAGE.
- 2 REFER TO FINISH PACKAGE & INTERIOR ELEVATIONS FOR APPLIED FINISHES & HEIGHTS.
- 3 WALL PROTECTION CAP OR CORNER GUARD PROVIDED BY NSD. WALL/DOOR JAMB CAN REMAIN UNFINISHED.
- 4 OUTLINE OF MILLWORK AND/OR KITCHEN SURFACES. FOR FINISHES REFER TO FINISH & MILLWORK PACKAGES.
- 5 EXISTING GLAZING TO REMAIN. REFER TO INTERIOR ELEVATIONS FOR WINDOW TREATMENTS.
- 6 GC TO PROVIDE CAULKING @ INTERIOR AND EXTERIOR EDGES OF TRESHOLD.
- 7 ALL FINISHES E.T.R. IF ANY NEW CONSTRUCTION OR DAMAGES TO LANDLORD FINISHES, PATCH & REPAIR TO LIKE-NEW CONDITION AND PAINT T.M.E.
- 8 BLACK FRP TO BE USED BELOW COUNTER HEIGHT ONLY, WHERE TO BE CONCEALED BY EQUIPMENT, ALONG DIE-WALLS AT THE COFFEE/JUICE BAR AND EXPO KITCHEN.
- 9 CUSTOM WAINSCOT DETAIL. REFER TO INTERIOR ELEVATIONS AND FINISH DETAILS FOR HEIGHTS, PATTERNS & INSTALLATION.
- 10 FLOOR DRAIN IN FINISH FLOOR. COORDINATE W/ SLAB WORK PLAN FOR LOCATIONS AND DEPRESSIONS IN CONCRETE.

GENERAL NOTES

1. GC IS RESPONSIBLE FOR SEQUENCING OF PREWIRING WITH COMPLETION OF INTERIOR FINISHES (GYP. BD. FINISHES).
2. REFER TO FINISH PACKAGE FOR COMPLETE LIST OF MATERIAL MANUFACTURERS AND VENDOR CONTACT INFO FOR ALL FINISHES.

FINISH LEGEND

CARPET	
CP-01	CARPET TILE / MANNINGTON COMMERCIAL / BOUCLE / SAPPHIRE 34293 / 24"x24"
CEILING	
CG-1	INTERIOR DRY LOCATIONS: 5/8" TYPE 'X' GYP. BOARD INTERIOR WET LOCATIONS: 5/8" TYPE 'X' MOISTURE RESISTANT GYP. BD
CG-2	ACOUSTICAL CEILING PANEL - ARMSTRONG - 24 x 24 GRID, WHITE
CG-3	TECTUM CEILING PANEL/ NATURAL / SQUARE_46 IN X 46 IN (ALSO CG-3)
CONCRETE	
CC-01	COLOR CONCRETE STAIN CLASS 2 FLOOR/ COLOR TBD
GLASS	
GL-01	CLEAR MIRROR - REFER TO FINISH PACKAGE
GROUT	
GR-01	#548 SURF GREEN / POLYBEND NON- SANDED FINISH (EXPO KITCHEN)
GR-02	#643 WARM GREY (OCULUS WALL)
GR-03	#59 SADDLE BROWN (QUARRY TILE)
GR-04	COLOR MATCHED TO BM 2086-40 DEEP CARNATION, LATICRETE PERMACOLOR SELECT (ENTRY FLOOR MOSAIC)
PAINT	
PT-01	BENJAMIN MOORE - NAVAJO WHITE PAINT OC- 95 / EGG SHELL (WALL BASE) FINISH
PT-02	BENJAMIN MOORE - 203 FIELDS OF GOLD - CLASSIC COLLECTION - EGG SHELL FINISH
PT-03	BENJAMIN MOORE - 714 HIDDEN FALLS - BENJAMIN MOORE CLASSICS - SATIN FINISH
PT-04	BENJAMIN MOORE - 1680 HUDSON BAY - CLASSIC COLLECTION - EGG SHELL FINISH
PT-05	BENJAMIN MOORE - TIMOTHY STRAW 2149-40 COLOR PREVIEW - EGG SHELL FINISH
PT-06	BENJAMIN MOORE - 2089-30 PINK MIX - COLOR PREVIEW - EGG SHELL FINISH
PT-07	BENJAMIN MOORE - RED - COLOR CODE TBD
PT-08	BENJAMIN MOORE - DARK RED - COLOR CODE TBD
PT-09	BENJAMIN MOORE - SOFT SALMON BW 096
PT-10	BENJAMIN MOORE - INTENSE PEACH BM 081 - EGG SHELL FINISH
SPECIAL FINISHES	
SF-01	MARMORINO / VERMONT SLATE 1673 PLASTER / SMOOTH FINISH - TOWEL POLISH
SF-02	CORK MOSAIC TILE - COLOR MATCH TO SW 2076-10 CRUSHED VELVET/ PREFINISHED FIRE TREATED (W/ GR-02)
TILE	
TL-01	STONESOURCE / COBBLE GREEN PATTERN TILE 8X8 / GLAZED FINISH (GR-01)
TL-02	STONESOURCE / HALF COBBLE GREEN PATTERN TILE / GLAZED FINISH (GR-01)
TL-03	STONESOURCE / BASE WHITE TILE / GLAZED FINISH (GR-01)
TL-04	NEMOTILE / ROSEMARY CRAQUELE / HIGH-GLOSS / 2.5"x10" (GR-01)
TL-05	DALTILE / QUARRY TILE 6X6 / ARID GREY / 0Q42 / MATTE TEXTURED FINISH (GR-03)
TL-06	WOOD TILE / INDOTEAK / EMMA / NATURAL / AMY FRANK CUSTOM PAINTED
TL-07	CERAMICA VOGUE / COBALTO / MATTE / VARIOUS SIZES / ENTRY FLOOR (GR-04)
METAL	
MT-01	METAL BASE - CLEAR COAT
MT-02	SUSPENDED TRELLIS - B+N; FORTINA; PROFILE 30 THS-3010; VENT WALNUT N; TA-758
MT-03	EXTERIOR TRELLIS - CUSTOM ALUMINUM FRAME BY SIGNAGE VENDOR (MT-02 SLATS)
VINYL FLOOR	
VF-01	VINYL FLOORING, MATS INC / WINEO PURLINE WOOD PLANKS / CANYON OAK HONEY
WALL, MISC.	
CO-1	CORNER GUARD - 1-1/2" x 1-1/2" 18GA. STAINLESS STEEL; FULL HEIGHT; OUTSIDE CORNER FRP TRANSITION
CO-2	CORNER GUARD - END CAP - 18 GA. STAINLESS STEEL CHANNEL; FULL HEIGHT
CO-3	CORNER GUARD - OUTSIDE CORNER AT TILE - 1/4" x 1/4" SCHLUTER QUAD/CO80E; STAINLESS STEEL 304; FULL HEIGHT
FRP-1	FIBER REINFORCED WALL PANELS - MARLITE - P100 WHITE, TEXTURED
FRP-2	FIBER REINFORCED WALL PANELS - MARLITE - P807 BLACK, TEXTURED
WC-01	WALLCOVERING / ARTE INT. / MUSTARD, MONOVO - HARMONY 28522A - NATURAL
WALL BASE	
WB-01	VINYL WALL BASE / MANNINGTON COMM. / BURKEBASE TYPE TP / DARK BRONZE 860
WB-02	VINYL WALL BASE / MANNINGTON COMM. / BURKEBASE TYPE TP / BLUEBONNET 323
WOOD	
WD-01	G.C. TO SOURCE, RIFT SAWN WHITE OAK, NATURAL STAIN
WD-02	SURFACING SOLUTIONS, POPLAR TAMBOUR, PAINTED: PT-02 (30"W)
WD-03	G.C. TO SOURCE, CHAIR RAIL, POPLAR, VARIOUS SIZES/COLORS, PT-03 & PT-10



11 FINISH PLAN - FINISH FLOOR
SCALE: 1/4" = 1'-0"

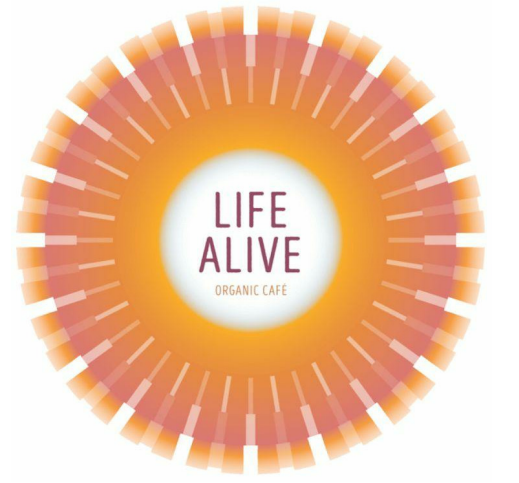
CONSULTANT

SEAL

ISSUES & REVISIONS

10/01/2021	- CD SET	
10/20/2021	- DEMOLITION PERMIT	
10/25/2021	- PERMIT SET	
REV	DATE	ISSUED
1		

OWNER/CLIENT
LIFE ALIVE



PROJECT
KENDALL SQUARE

415 MAIN STREET,
CAMBRIDGE, MA 02142

DRAWING TITLE
FINISH PLAN

DRAWING INFORMATION
Job Number: 221078
Checked By: KTB
Drawn By: CMD
DRAWING NUMBER

A
150

PERMIT SET 10/25/2021

Copyright © 2017 by BKA Architects, Inc. The architectural plans, designs, specifications and other arrangements on this sheet are and shall remain the property of BKA Associates, Inc. No part thereof shall be copied, disclosed to others, or used in connection with any work or project, other than the specified project for which they have been prepared and developed, without the express knowledge and written consent of BKA Architects, Inc.



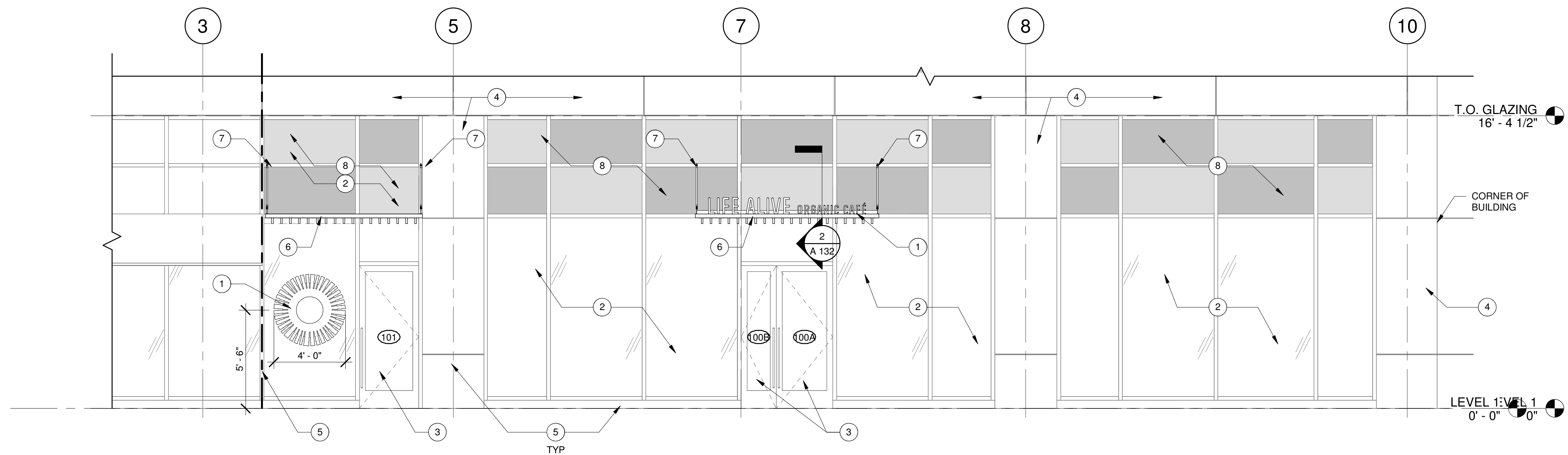
4 PROPOSED EXTERIOR 3D VIEW
SCALE:



3 PROPOSED EXTERIOR 3D VIEW
SCALE:



2 PROPOSED EXTERIOR 3D VIEW
SCALE:



1 EXTERIOR ELEVATION - PLANTER
SCALE: 1/4" = 1'-0"

GENERAL NOTES

1. ALL SIGNAGE SHALL BE UNDER SEPARATE REVIEW AND PERMIT.

CODED NOTES

- 1 NEW SIGN F&I BY SIGNAGE VENDOR. ALL SIGNAGE SHOWN FOR REFERENCE ONLY AND TO BE SUBMITTED FOR SEPARATE PERMIT BY SIGNAGE VENDOR.
- 2 EXISTING STOREFRONT SYSTEM TO REMAIN IN ITS ENTIRETY U.N.O.
- 3 EXISTING STOREFRONT DOOR TO REMAIN. CUSTOM DOOR HARDWARE TO BE PROVIDED BY VENDOR AND INSTALLED BY GC.
- 4 EXISTING EXTERIOR FINISHES TO REMAIN IN THEIR ENTIRETY.
- 5 TENANT LEASE LINE.
- 6 REPLACE EXISTING AWNING WITH ENTIRE NEW ALUMINUM FRAME SYSTEM AND STYLE. REFER TO A132 FOR DETAILS.
- 7 NEW AWNING SUPPORT ARM & BRACKET SECURED TO EXISTING MULLIONS. REFER TO STRUCTURAL FOR DETAILS.
- 8 NEW SEMI-TRANSPARENT VINYL GRAPHICS. SHOWN FOR REFERENCE ONLY AND TO BE SUBMITTED FOR SEPARATE PERMIT BY SIGNAGE VENDOR.

ARCHITECT

BKA ARCHITECTS

Boston + Brockton
142 Crescent Street
Brockton, MA 02302
508.583.5703
bkaarchitects.com

CONSULTANT

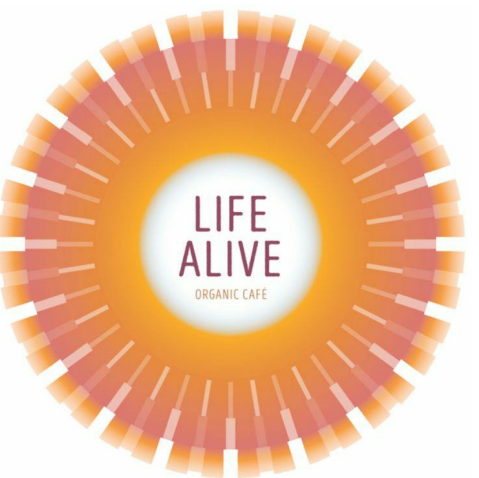
SEAL

ISSUES & REVISIONS

10/01/2021 - CD SET
10/20/2021 - DEMOLITION PERMIT
10/25/2021 - PERMIT SET

REV	DATE	ISSUED
1		

OWNER/CLIENT
LIFE ALIVE



PROJECT
KENDALL SQUARE

415 MAIN STREET,
CAMBRIDGE, MA 02142

DRAWING TITLE
EXTERIOR
ELEVATION &
PERSPECTIVES

DRAWING INFORMATION
Job Number: 221078
Checked By: KTB
Drawn By: CMD
DRAWING NUMBER

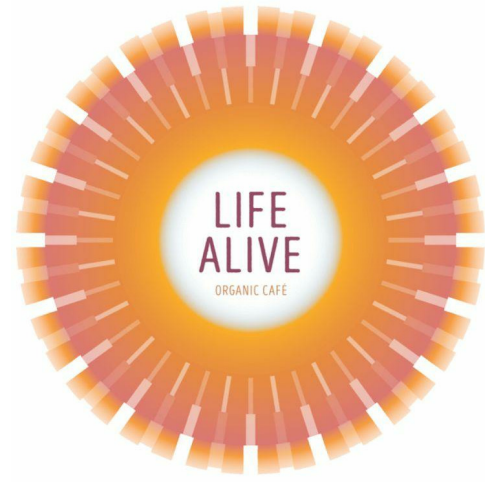
A
200

PERMIT SET 10/25/2021

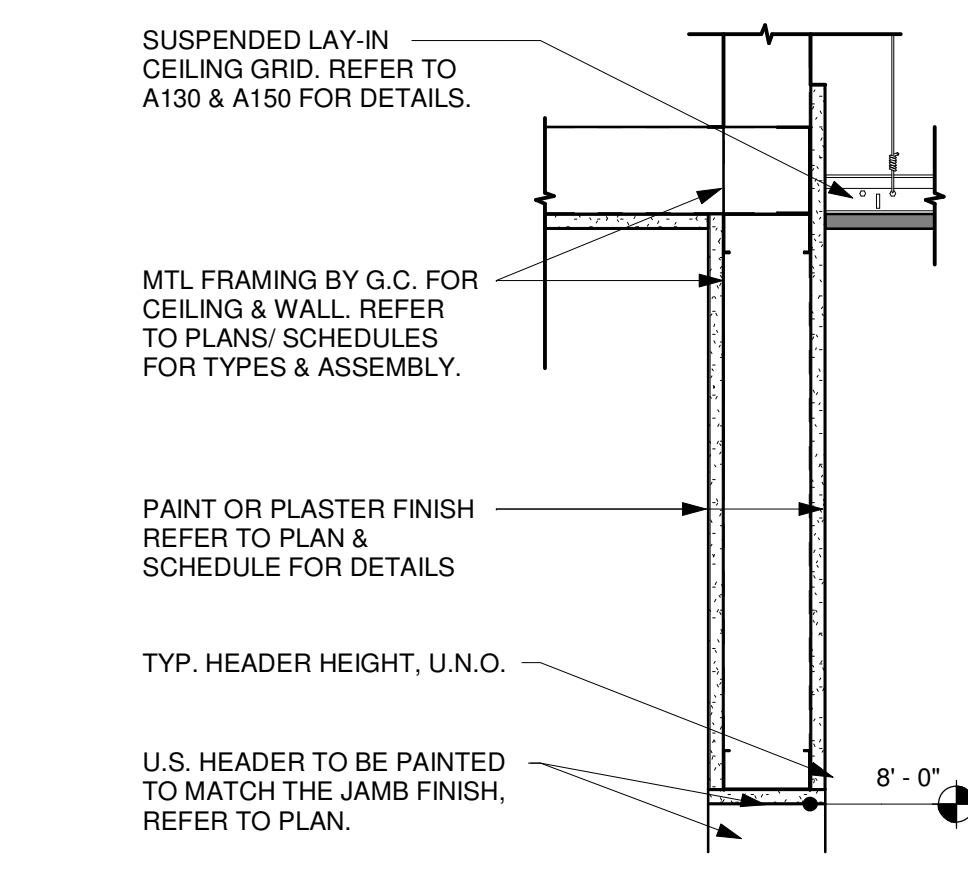
Copyright © 2017 by BKA Architects, Inc. The architectural plans, drawings, designs, specifications and other arrangements on this sheet are and shall remain the property of BKA Architects, Inc. No part thereof shall be copied, disseminated to others, or used in connection with any work or project, other than the specified project for which they have been prepared and developed, without the express knowledge and written consent of BKA Architects, Inc. 1/11/2022 11:18:13 PM C:\Users\Local21\OneDrive\Desktop\Life Alive_Kendall Square_042921\WCD-02.rvt

ISSUES & REVISIONS

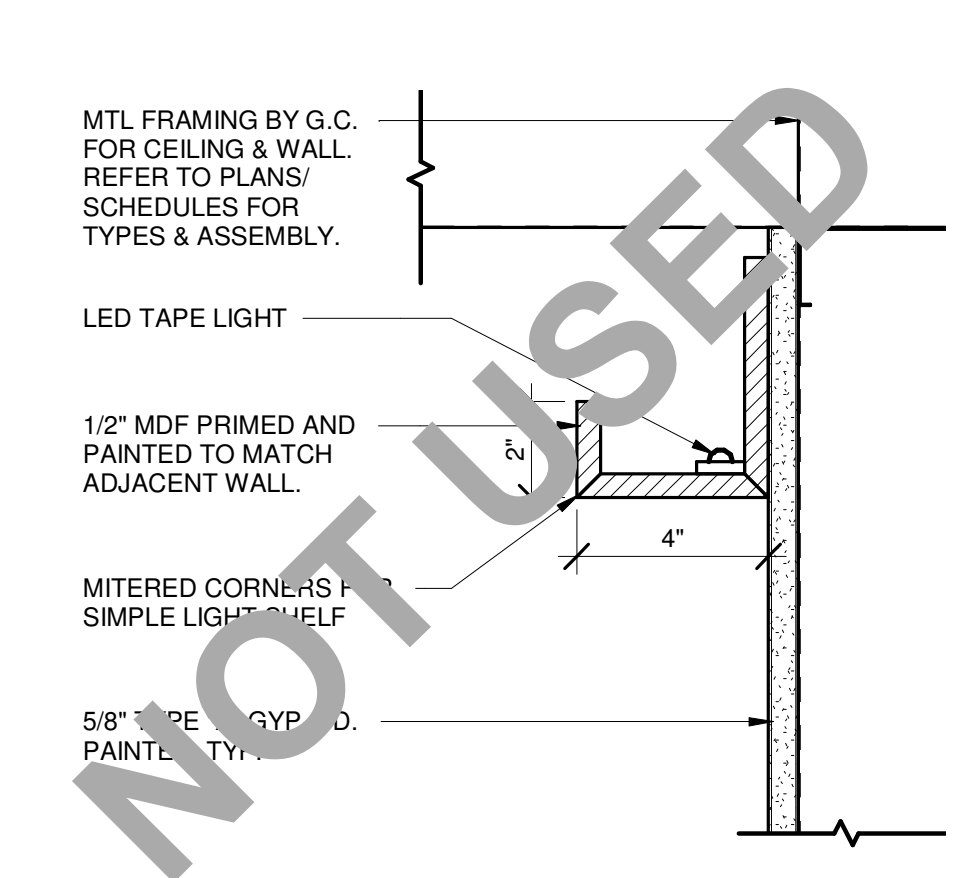
REV DATE	ISSUED
10/01/2021	CD SET
10/20/2021	DEMOLITION PERMIT
10/25/2021	PERMIT SET
1	12/20/21 IFC / REV-1
2	01/12/21 REV-2



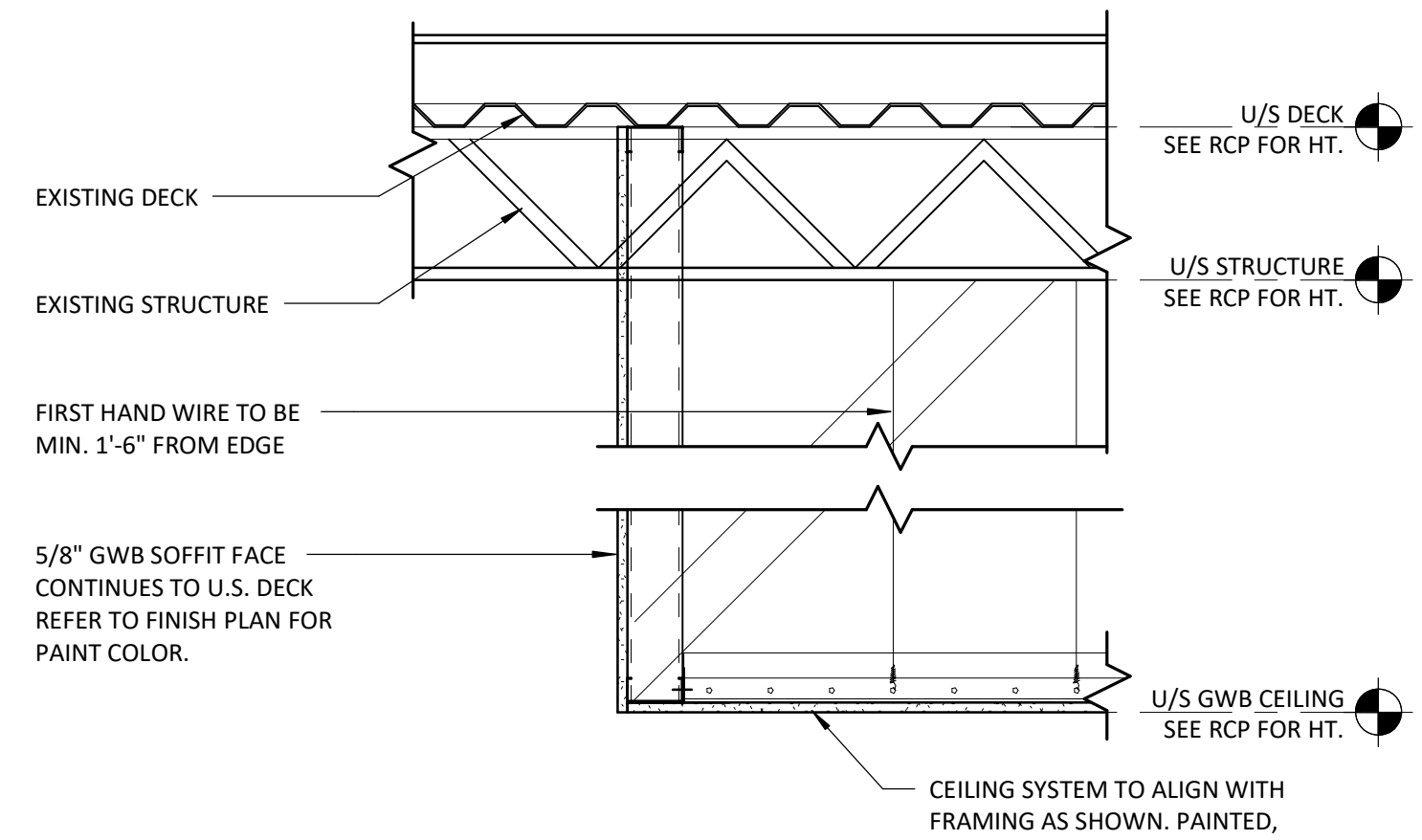
REVISION 2 01/12/2021



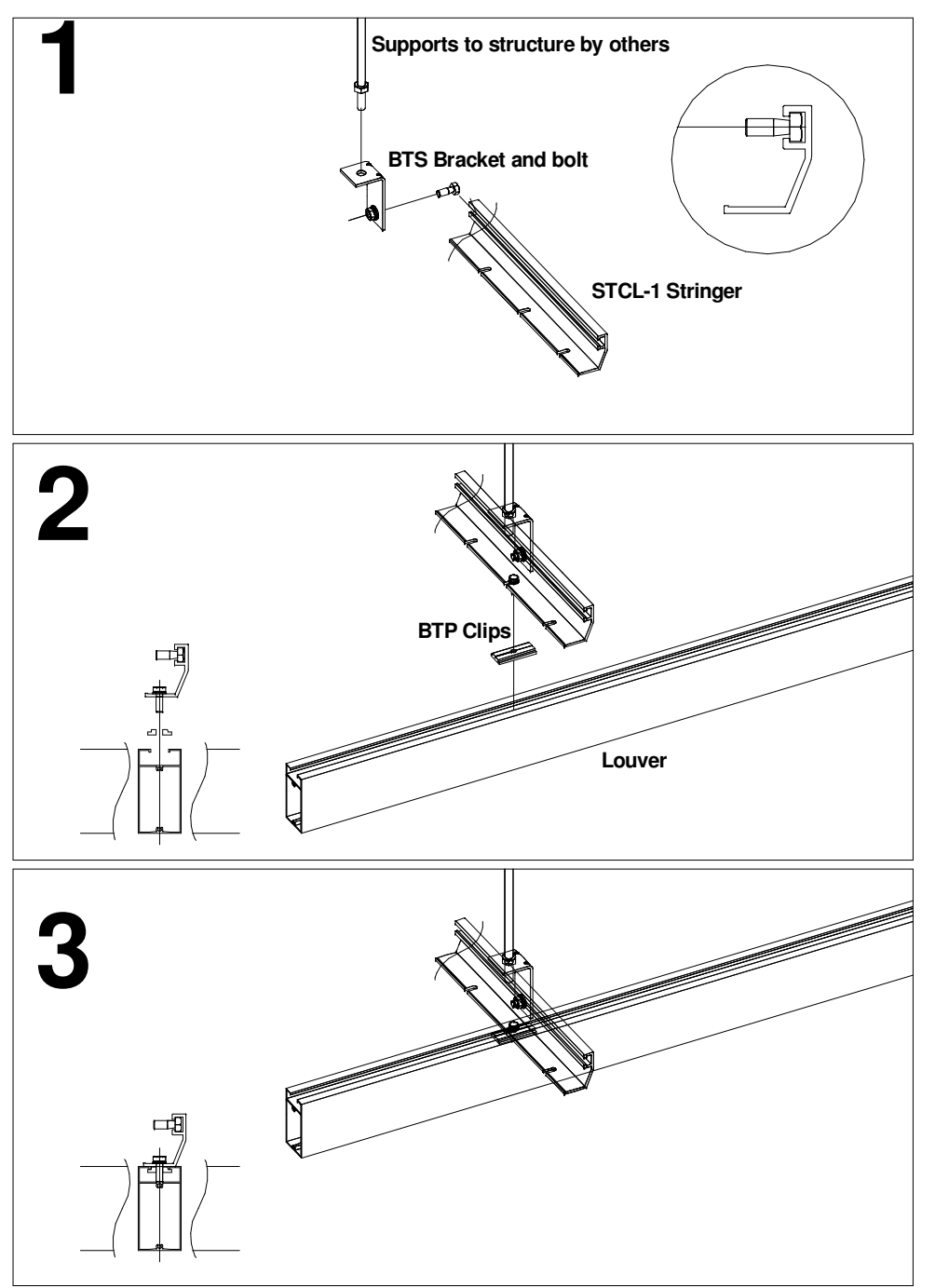
7 TYP. HALLWAY HEADER DETAIL
 SCALE: 1 1/2" = 1'-0"



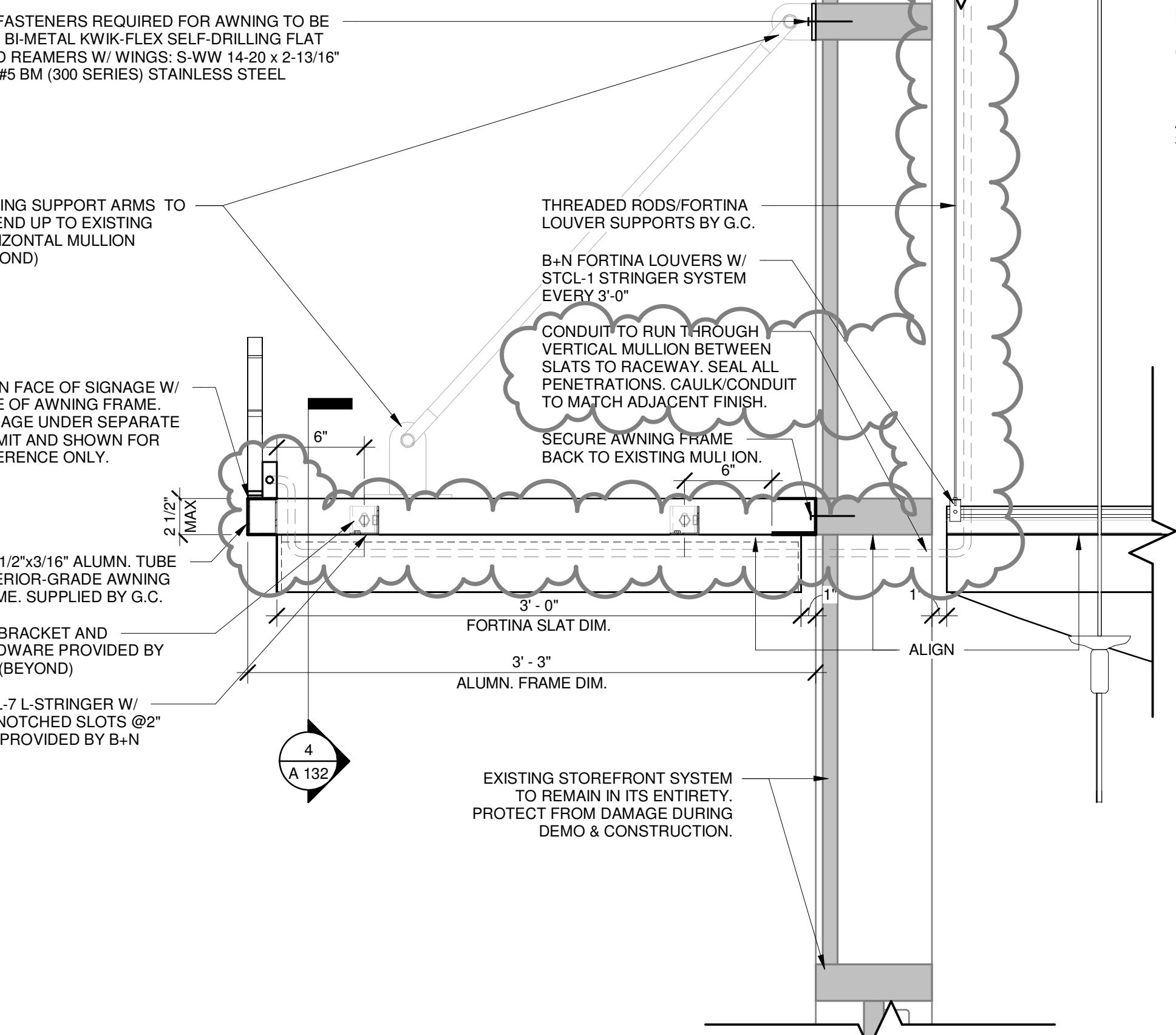
6 TYP. LED COVE LIGHT DETAIL
 SCALE: 3" = 1'-0"



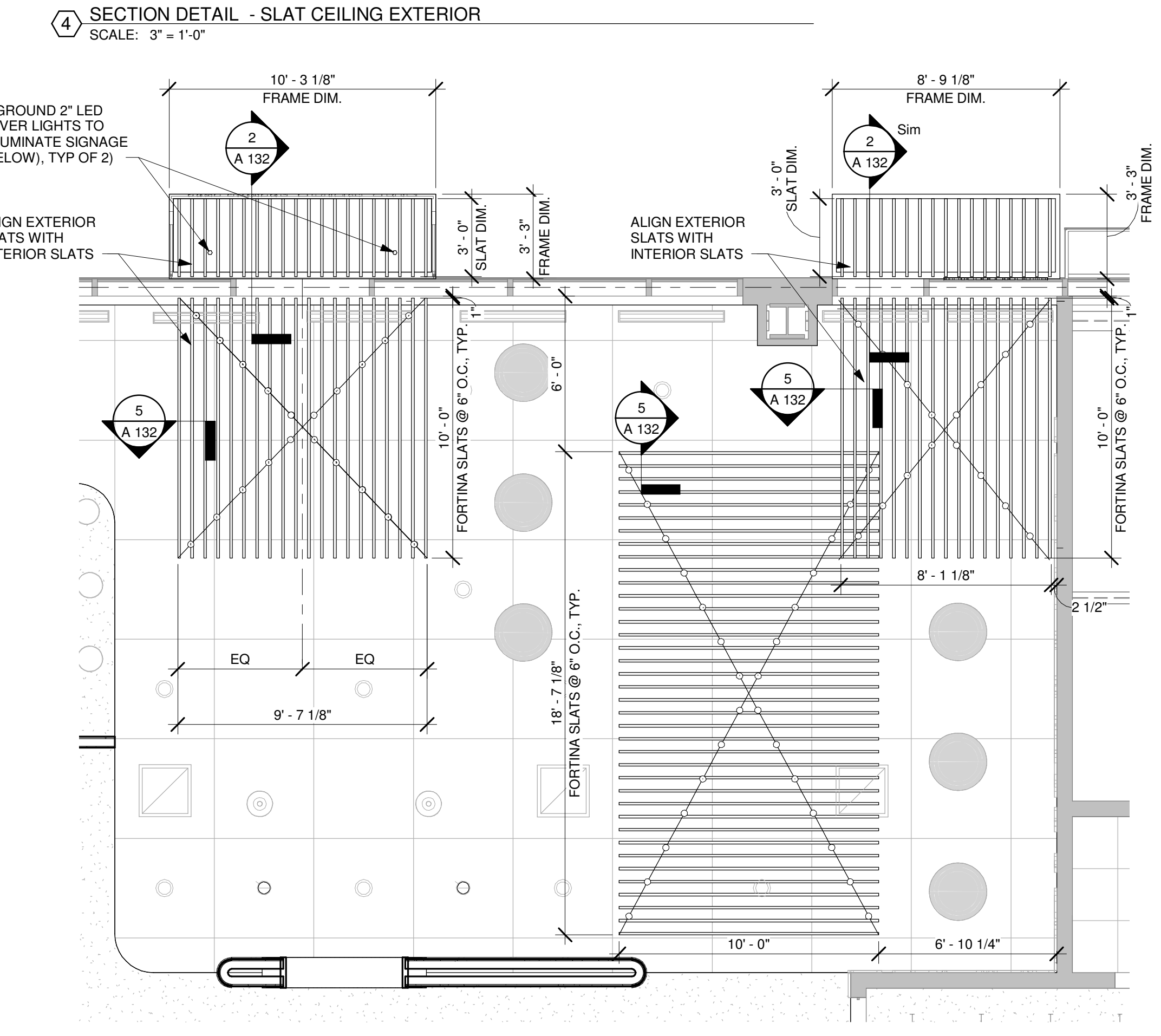
8 SOFFIT DETAIL UP TO DECK
 SCALE: 1" = 1'-0"



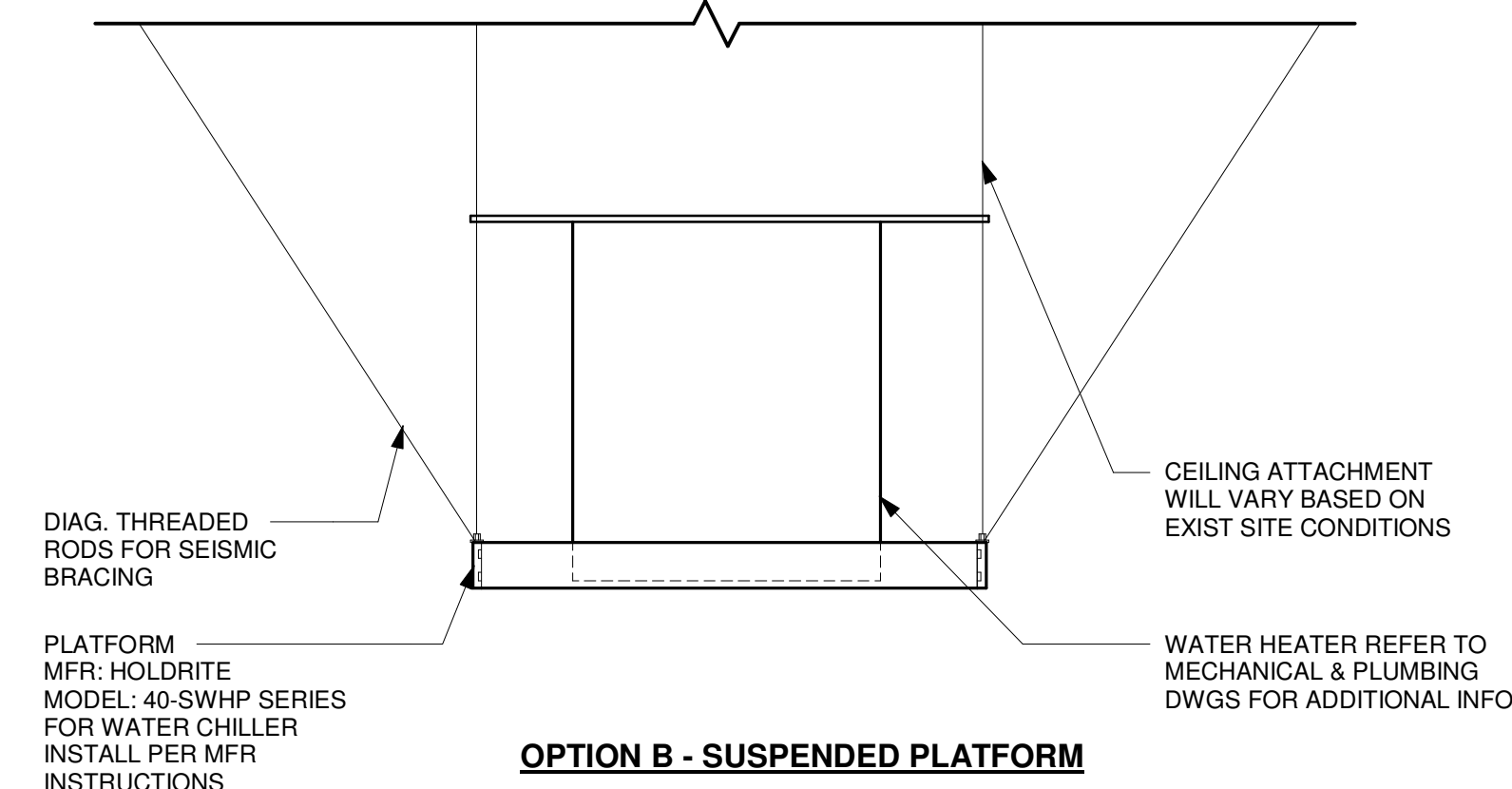
5 STRINGER MOUNTED FORTINA LOUVERS
 SCALE: 12" = 1'-0"



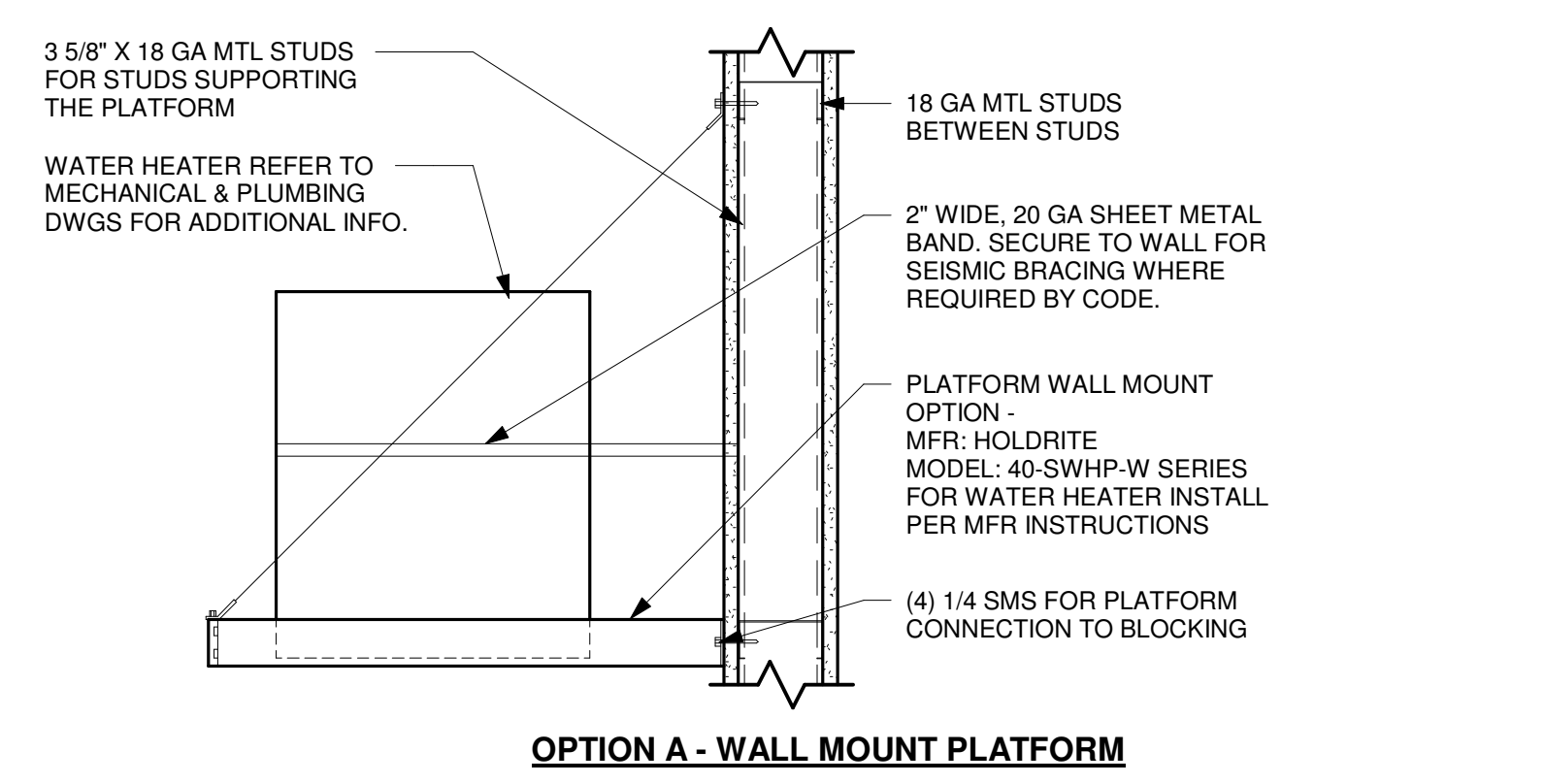
2 SECTION DETAIL - SLAT CEILING TO AWNING
 SCALE: 1 1/2" = 1'-0"



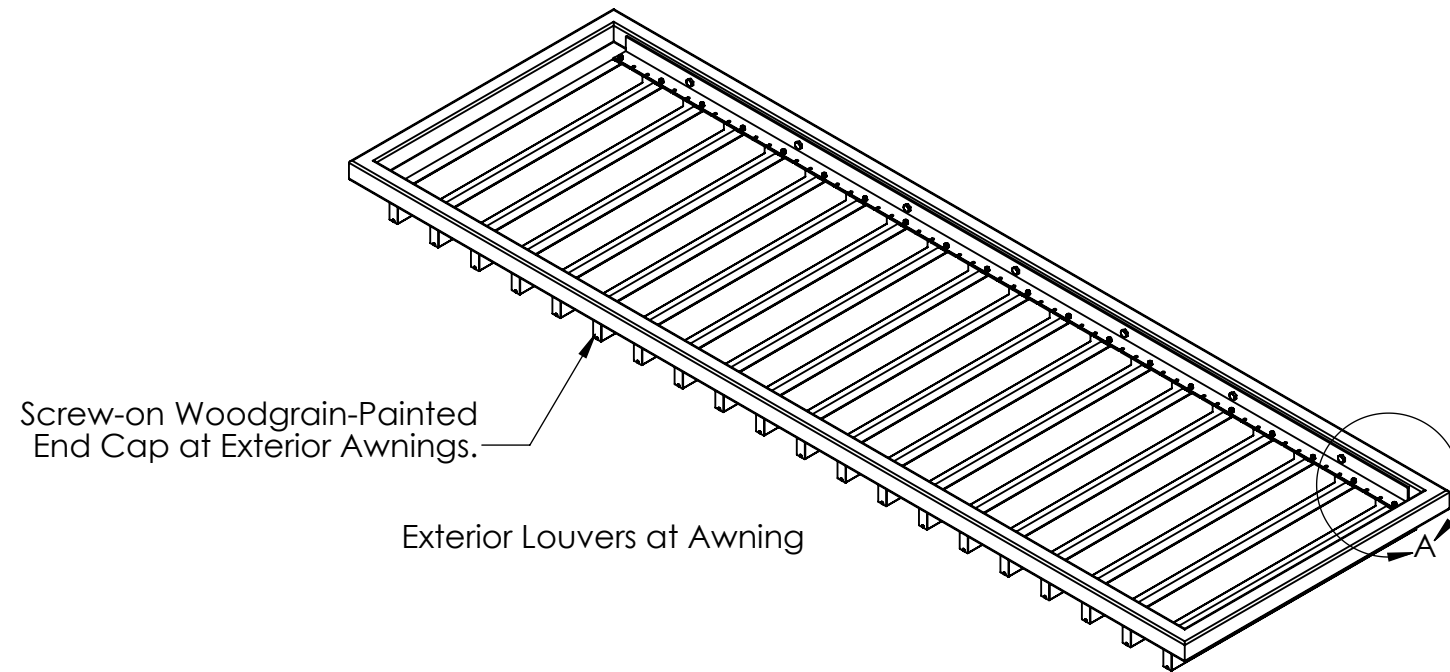
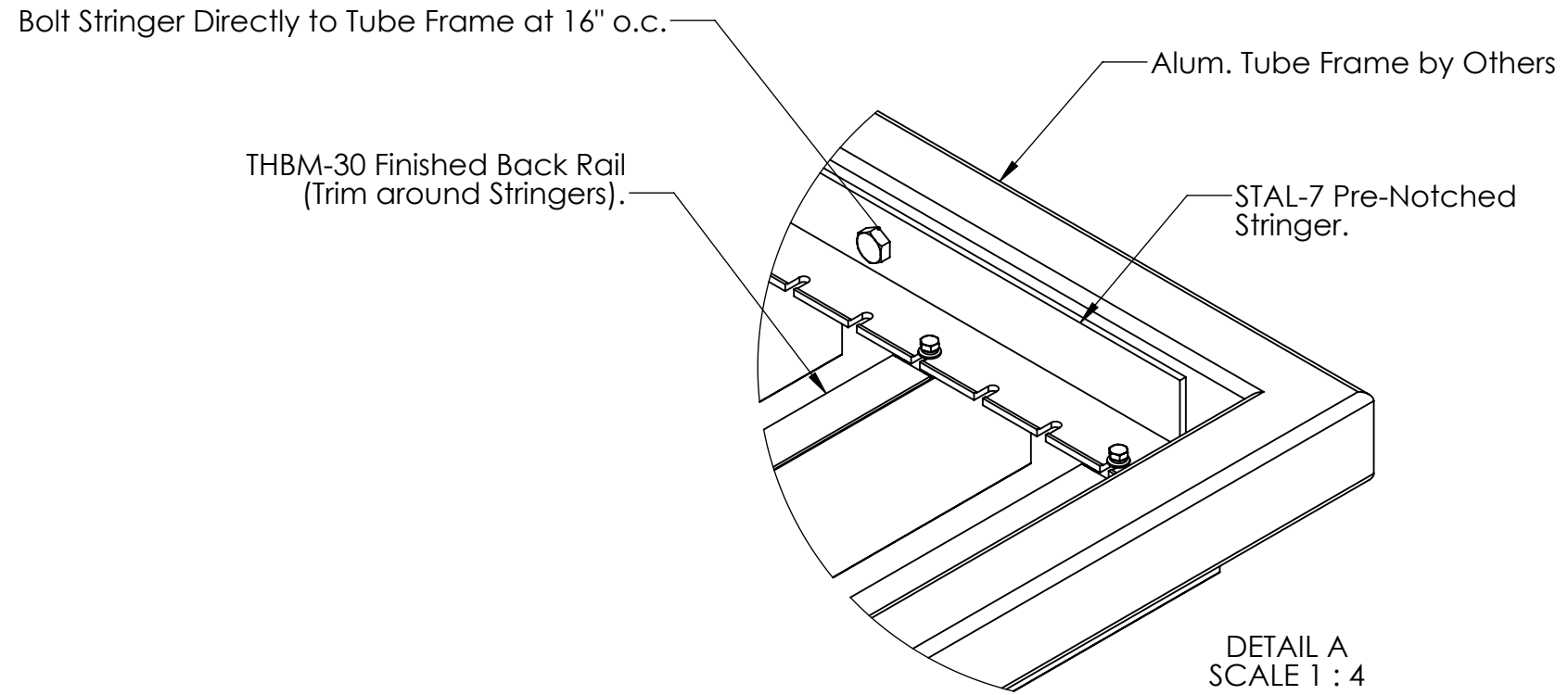
1 METAL SLAT CEILING PLAN
 SCALE: 1/4" = 1'-0"



- NOTES:
- GC TO COORD LOCATION W/ MEP'S.
 - GC TO PROVIDE ACCESS PANEL WHENEVER HEATER IS ABOVE HARD LID CEILING OR IN WALL CAVITY



3 WATER HEATER MOUNTING DETAIL
 SCALE: 1 1/2" = 1'-0"



DESC: Fortina Ceiling Installation

CLIENT: BKA Architects

PROJECT: Life Alive, Kendall Square

RELEASE DATE: 11/3/21

DRAWN BY:

APPROVED BY:

MATERIAL: Aluminum

FINISH: TA-758

UNIT OF MEASURE: Inches

LAST REVISION:
Friday, November 5, 2021 11:14:02 AM PPressesky

REVISION DATA:

NOTES:
Dimensions are for reference only;
Drawing is for design intent and not
intended for manufacturing.



PROPRIETARY AND CONFIDENTIAL

Drawings are for conceptual use only. Not approved for construction. Final fabrication determined by contractor.

THE INFORMATION CONTAINED IN THIS DRAWING IS THE SOLE PROPERTY OF B+N INDUSTRIES. ANY REPRODUCTION IN PART OR AS A WHOLE WITHOUT THE WRITTEN PERMISSION OF B+N INDUSTRIES IS PROHIBITED.

ITEM #: N/A

DESC: Fortina Ceiling Installation

CLIENT:

PROJECT:

RELEASE DATE:

DRAWN BY:

APPROVED BY:

MATERIAL: Aluminum

FINISH: TA-758

UNIT OF MEASURE: Inches

LAST REVISION:
Friday, November 5, 2021 11:14:02 AM PPressesky

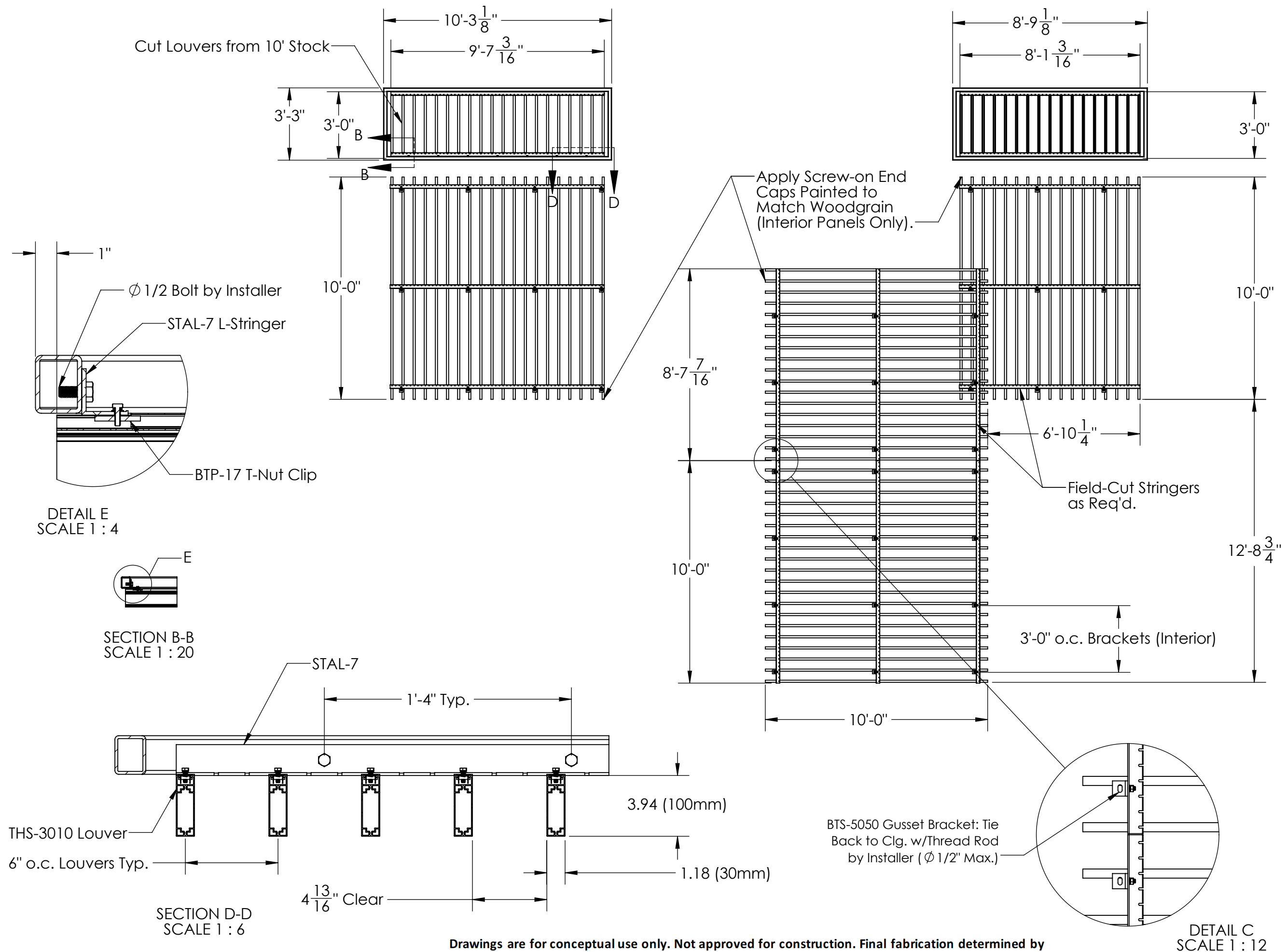
REVISION DATA:

NOTES:
Dimensions are for reference only.
Drawing is for design intent and not
intended for manufacturing.



PROPRIETARY AND CONFIDENTIAL

THE INFORMATION CONTAINED IN THIS DRAWING
IS THE SOLE PROPERTY OF B&N INDUSTRIES. ANY
REPRODUCTION IN PART OR AS A WHOLE WITHOUT
THE WRITTEN PERMISSION OF B&N INDUSTRIES IS PROHIBITED.



Drawings are for conceptual use only. Not approved for construction. Final fabrication determined by contractor.



CIRCULAR PAVER LIGHTS SL-37-P



TYPE



SPECIFICATIONS

CONSTRUCTION:

Body: Brass

Cap: Brass

LENS: High impact clear tempered step glass with white lens underneath for diffusion

LAMP SUPPLIED: 1.5w, 50,000 hour, G4 Bi Pin LED (100 lumens, 3000k)

SOCKET: High temperature ceramic bi-pin, 250°C silicone lead wires

WIRING: Black 5 foot 18/2 zip cord from base of fixture (12v only)

CONNECTION: FA-05 Quick Connector (not supplied) from fixture to main cable (12/2, 10/2 or 8/2 only)

FINISH: Unfinished brass. Optional finishes available

VEHICULAR PRESSURE RATING: 8800 lbs



Golf Ball Shown for Scale

ORDERING INFORMATION

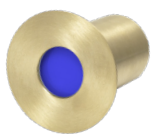
CATALOG NO.	DESCRIPTION	LAMP	SHIP WEIGHT
SL-37-P-BRS	Circular Brass Paver Light	1.5w Bi Pin LED	2.0 lbs.

ACCESSORIES

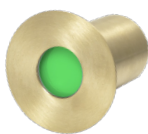
- FA-09-SL-37P-BLUE Blue Gel
- FA-09-SL-37P-GREEN Green Gel
- FA-09-SL-37P-RED Red Gel
- FA-09-SL-37P-AMBER Amber Gel



go green
led solutions



Blue



Green



Red



Amber

IP65

CE



JOB INFORMATION

Type: _____ Date: _____

Job Name: _____

Cat. No.: _____

Lamp(s): _____

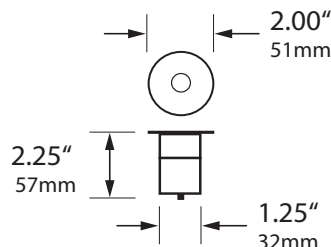
Specifier: _____

Contractor: _____

Notes: _____

FOCUS INDUSTRIES INC.
25301 COMMERCENTRE DRIVE
LAKE FOREST, CA 92630

www.focusindustries.com
sales@focusindustries.com
(949) 830-1350 • FAX (949) 830-3390



Black Texture (Standard)	Antique Verde	Bronze Texture	Camel	White Texture	Hunter Texture	Rust	Weathered Iron	Weathered Brown	Stucco	Rubbed Verde	Chrome Powder	Acid Rust	Acid Verde	Black Acid Treatment
-BLT	-ATV	-BRT	-CAM	-WTX	-HTX	-RST	-WIR	-WBR	-STU	-RBV	-CPR	-BAR/CAR	-BAV/CAV	-BAT





